

Arboretum Business Park I

31,200 SF Available

8115 Century Blvd
Chanhassen, MN 55318



Contact Us

**JP
MALONEY**

+1 612 791 1171

jp.maloney@cbre.com

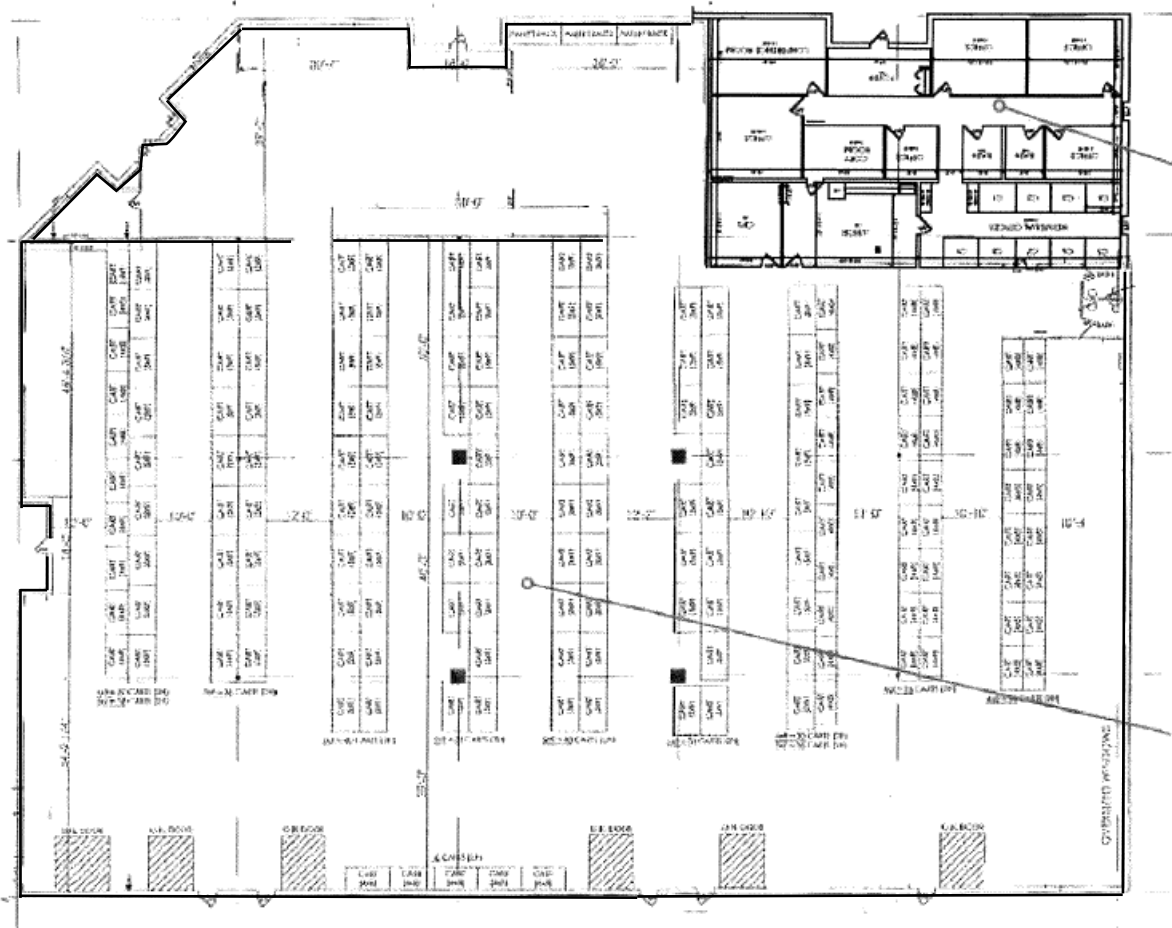
**MATT
OELSCHLAGER**

+1 612 532 4747

matt.oelschlager@cbre.com

Arboretum Business Park I

8115 Century Blvd | Chanhassen, MN 55318



Property Description

This sublease presents a rare opportunity to lease a highly functional facility in the desirable Chanhassen submarket. The availability is equipped with 31,200 SF, dock & drive-in loading, and modern clear height. The sublessor will consider aggressive offers – this is a fabulous opportunity for users looking to save on costs relative to current office-warehouse pricing.

Date Available **2025 CAM/Tax**

+ 30-day notice + \$3.26 PSF

Net Rate **Sublease Term**

+ \$6.00 PSF + Expiring
8/31/2027

Property Highlights

Available SF

+ 31,200 SF Total
+ 28,631 SF Warehouse
+ 2,569 SF Office

Loading

+ 5 dock doors (10'x8')
w/levelers
+ 1 drive-in door (14'x12')

Clear Height

+ 24'

Lighting

+ LED

Power

+ 500 amps 277v
3-phase

Sprinkler

+ ESFR sprinkler system

Column Spacing

+ 40'x40'

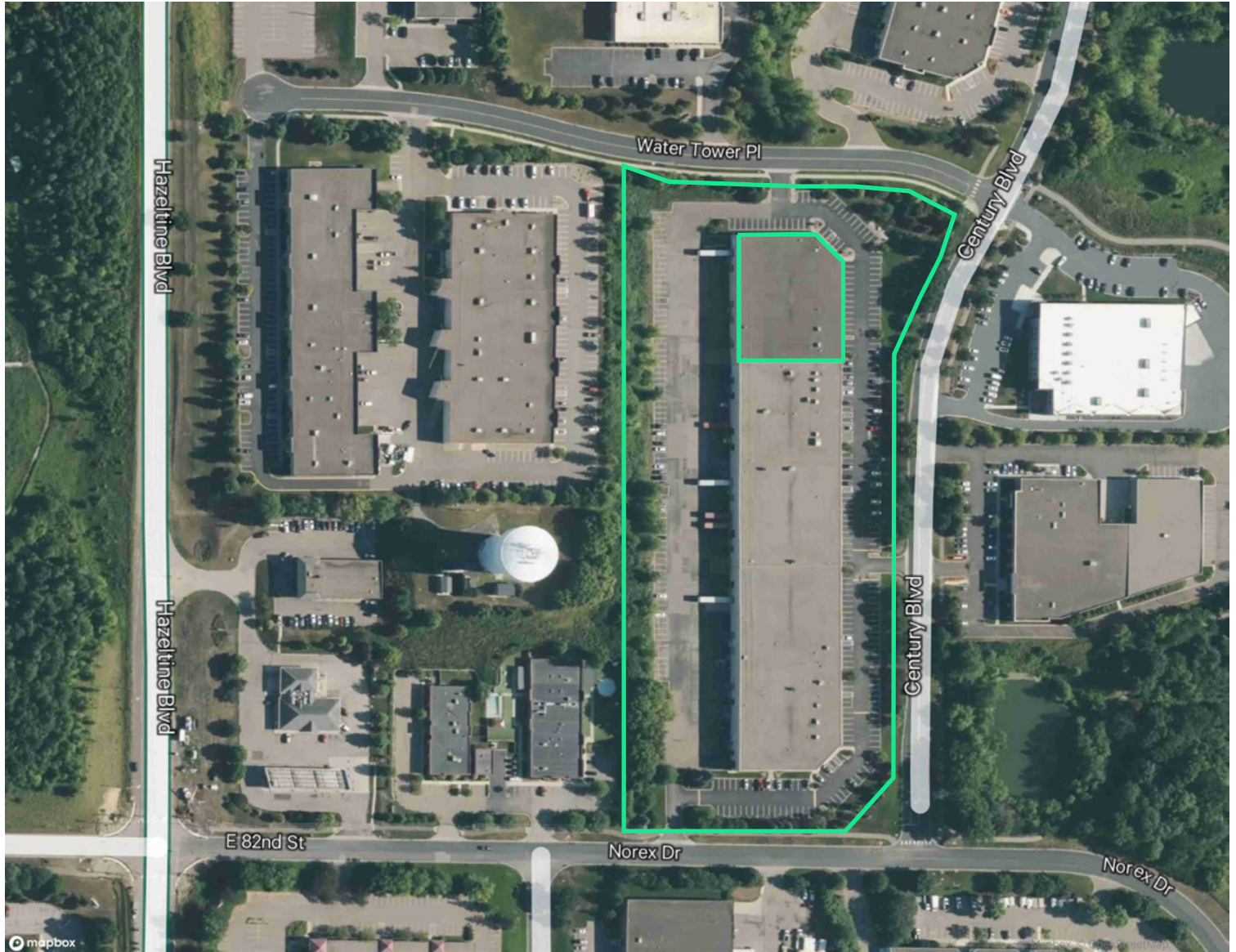
For Sublease



Arboretum Business Park I

8115 Century Blvd | Chanhassen, MN 55318

For Sublease



Contact Us

**JP
MALONEY**

+1 612 791 1171

jp.maloney@cbre.com

**MATT
OELSCHLAGER**

+1 612 532 4747

matt.oelschlager@cbre.com

© 2025 CBRE, Inc. All rights reserved. This information has been obtained from sources believed reliable, but has not been verified for accuracy or completeness. You should conduct a careful, independent investigation of the property and verify all information. Any reliance on this information is solely at your own risk. CBRE and the CBRE logo are service marks of CBRE, Inc. All other marks displayed on this document are the property of their respective owners, and the use of such logos does not imply any affiliation with or endorsement of CBRE. Photos herein are the property of their respective owners. Use of these images without the express written consent of the owner is prohibited.

CBRE