

# retail FOR LEASE

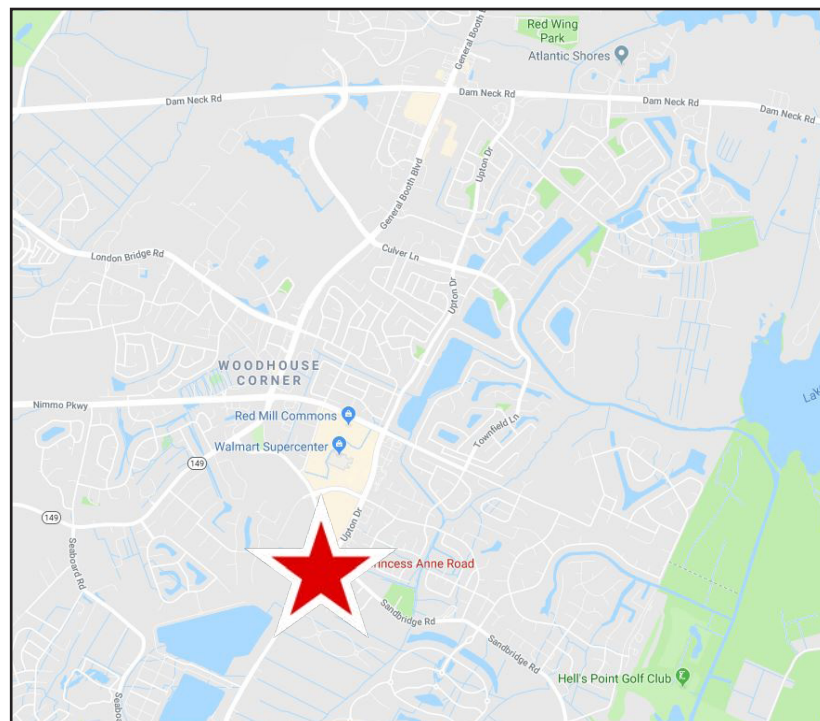


## SANDBRIDGE PLACE | 2090 Princess Anne Road, Virginia Beach, Virginia

### PROPERTY FEATURES:

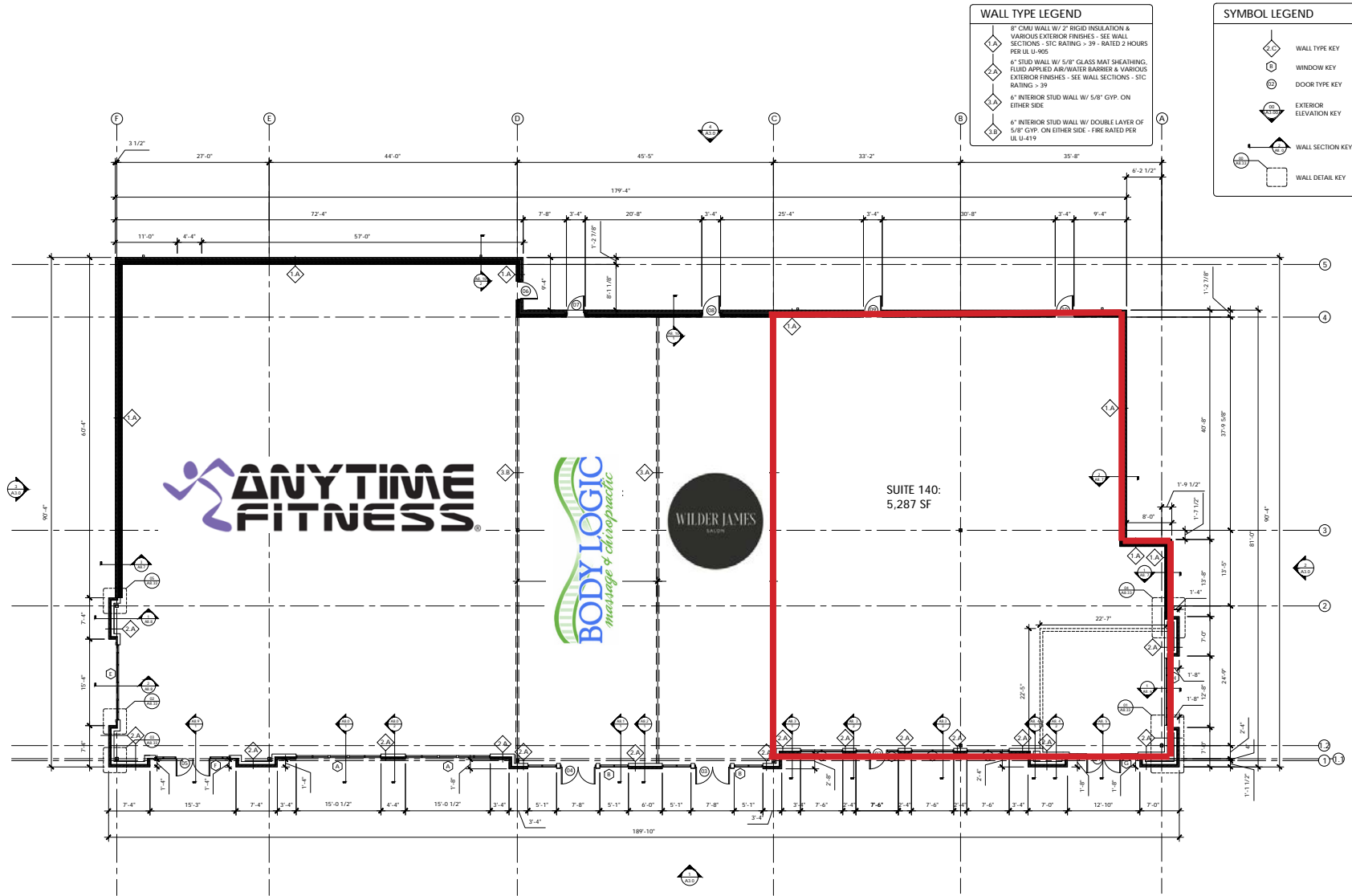
- **JUST LISTED! ±5,287 SF ENDCAP** available at Sandbridge Place in the growing Red Mill trade area!
- **Join Anytime Fitness, Body Logic Massage & Chiropractic and Wilder James Salon** in this recently developed ±15,325 sf retail center with monument signage.
- **Located between the Food Lion anchored shopping center** at the corner of Princess Anne & Sandbridge Road and the CHKD pediatrics office; across from Sandbridge Commons, the Harris Teeter anchored center.
- **Strong demographics!**

DEMOGRAPHICS	1 MILE	3 MILES	5 MILES
Est. Population	7,748	42,382	72,236
Avg HH Income	\$143,721	\$127,087	\$122,904
Households	2,579	14,620	24,579



Jay Burnell  
o: 757.222.0111  
m: 757.617.3511  
jay@parkerburnell.com

Kristen Huber  
o: 757.222.0111  
m: 757.714.2341  
kristen@parkerburnell.com

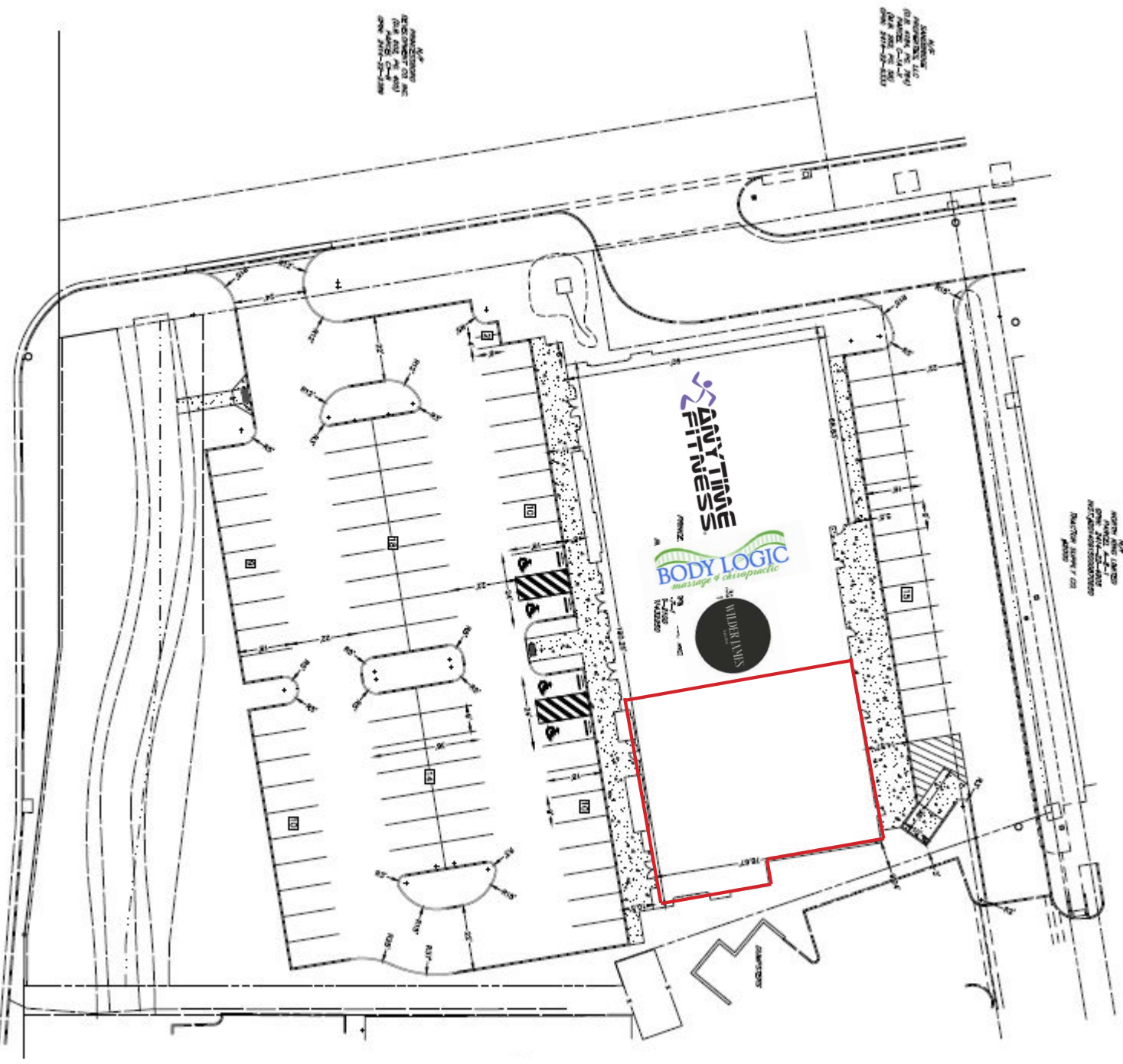


1 FLOOR PLAN  
Scale: 1/8" = 1'-0"

Jay Burnell  
o: 757.222.0111  
m: 757.617.3511  
jay@parkerburnell.com



Kristen Huber  
o: 757.222.0111  
m: 757.714.2341  
kristen@parkerburnell.com



PRINCESS ANNE ROAD (VARIABLE WIDTH R/W)  
(MB 282, PG 5B)

TOTAL  
FOOTPRINT AREA

Jay Burnell  
o: 757.222.0111  
m: 757.617.3511  
jay@parkerburnell.com



real estate group

Kristen Huber  
o: 757.222.0111  
m: 757.714.2341  
kristen@parkerburnell.com





Jay Burnell  
o: 757.222.0111  
m: 757.617.3511  
jay@parkerburnell.com



Kristen Huber  
o: 757.222.0111  
m: 757.714.2341  
kristen@parkerburnell.com





Jay Burnell  
 o: 757.222.0111  
 m: 757.617.3511  
 jay@parkerburnell.com



Kristen Huber  
 o: 757.222.0111  
 m: 757.714.2341  
 kristen@parkerburnell.com