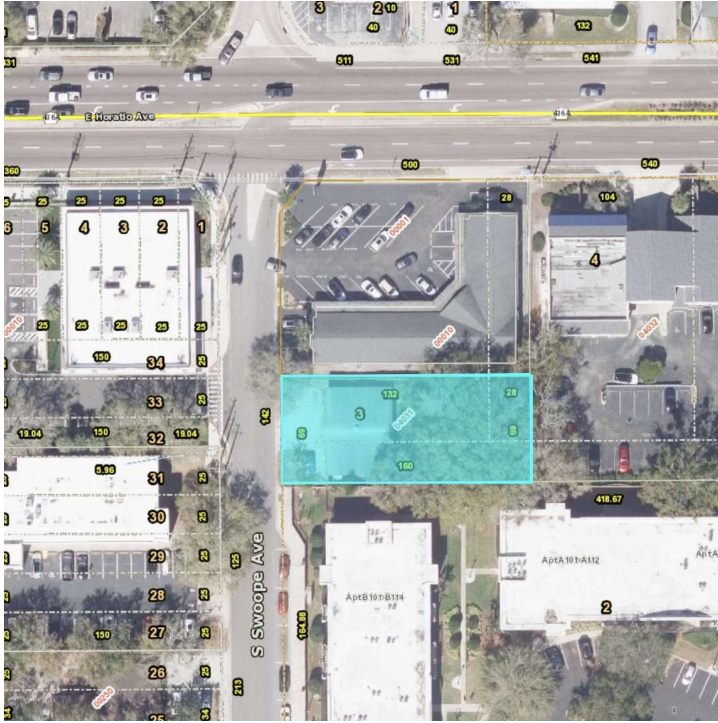


Downtown Maitland Land



OFFERING SUMMARY

| | |
|--------------------------------------|------------|
| Asking Sale Price: | \$500,000 |
| Lot Size: | 0.25 Acres |
| Zoning (MTL-DM) Link | Many uses |

PROPERTY OVERVIEW

Rare Maitland land for sale
 Downtown prime core location in a highly sought-after market
 New developments underway along Horatio
 Approx 1,000 brand new multi-fam recently built nearby
 Easy access to 17/92, Maitland Blvd, and I-4
 Close to Maitland SunRail Station
 Strong demos - HH income \$173K

PROPERTY HIGHLIGHTS

- Site is cleared and ready to build
- Downtown Maitland Zoning (MTL-DM)
- Uses: office, retail, and multi-fam
- Higher Density of .60 FAR is encouraged by City
- Utilities to site
- New survey and clean enviro (2024)

LEE ZERIVITZ, SIOR, CCIM

Managing Partner
 407.644.CITY
lee@citycommercial.com

CITY COMMERCIAL

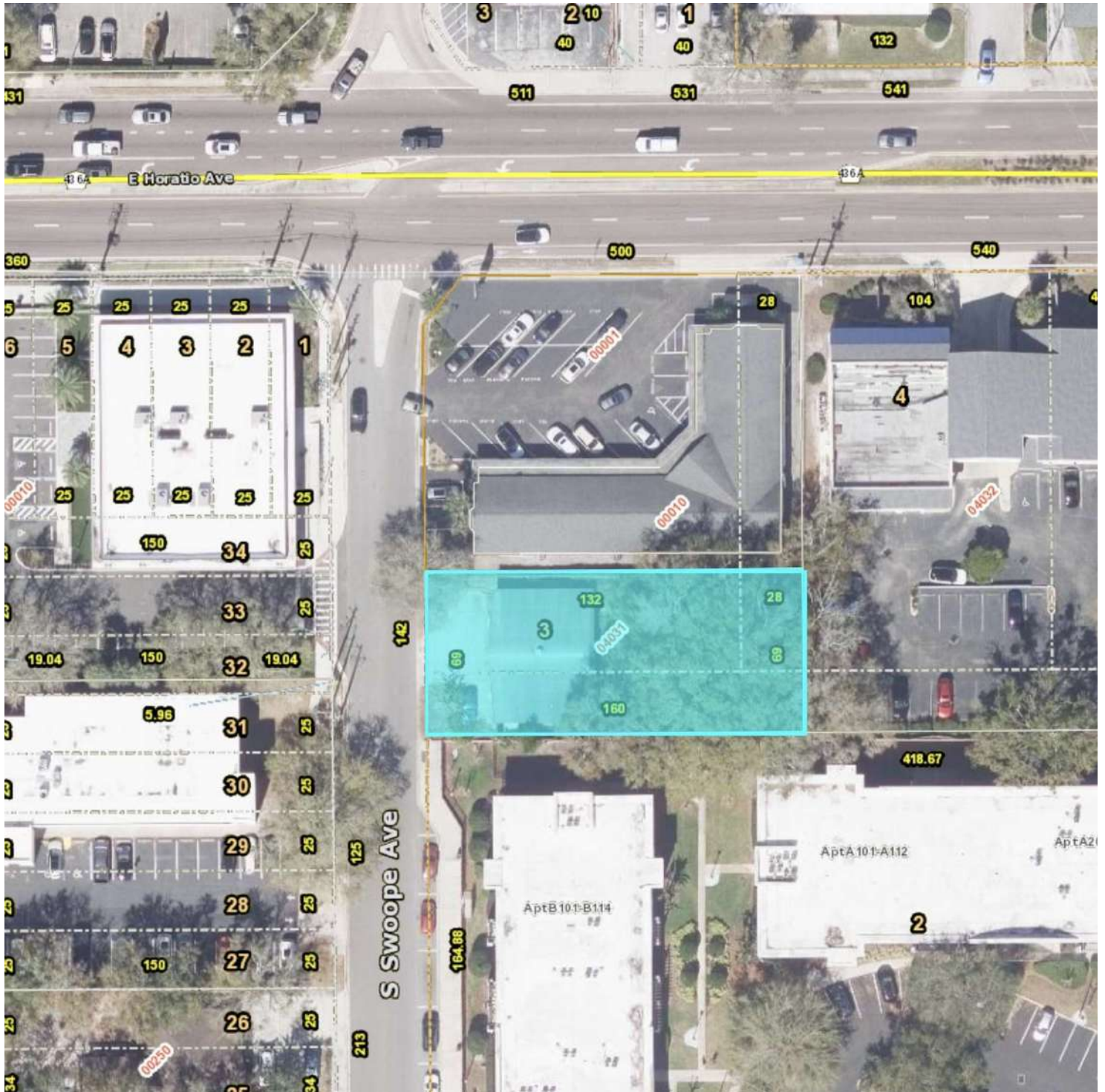
1101 Symonds Ave.
 Winter Park, FL 32789
CITYCommercial.com



FOR SALE

142 S SWOOPE AVE | MAITLAND, FL 32751

Aerial



LEE ZERIVITZ, SIOR, CCIM
Managing Partner
407.644.CITY
lee@citycommercial.com

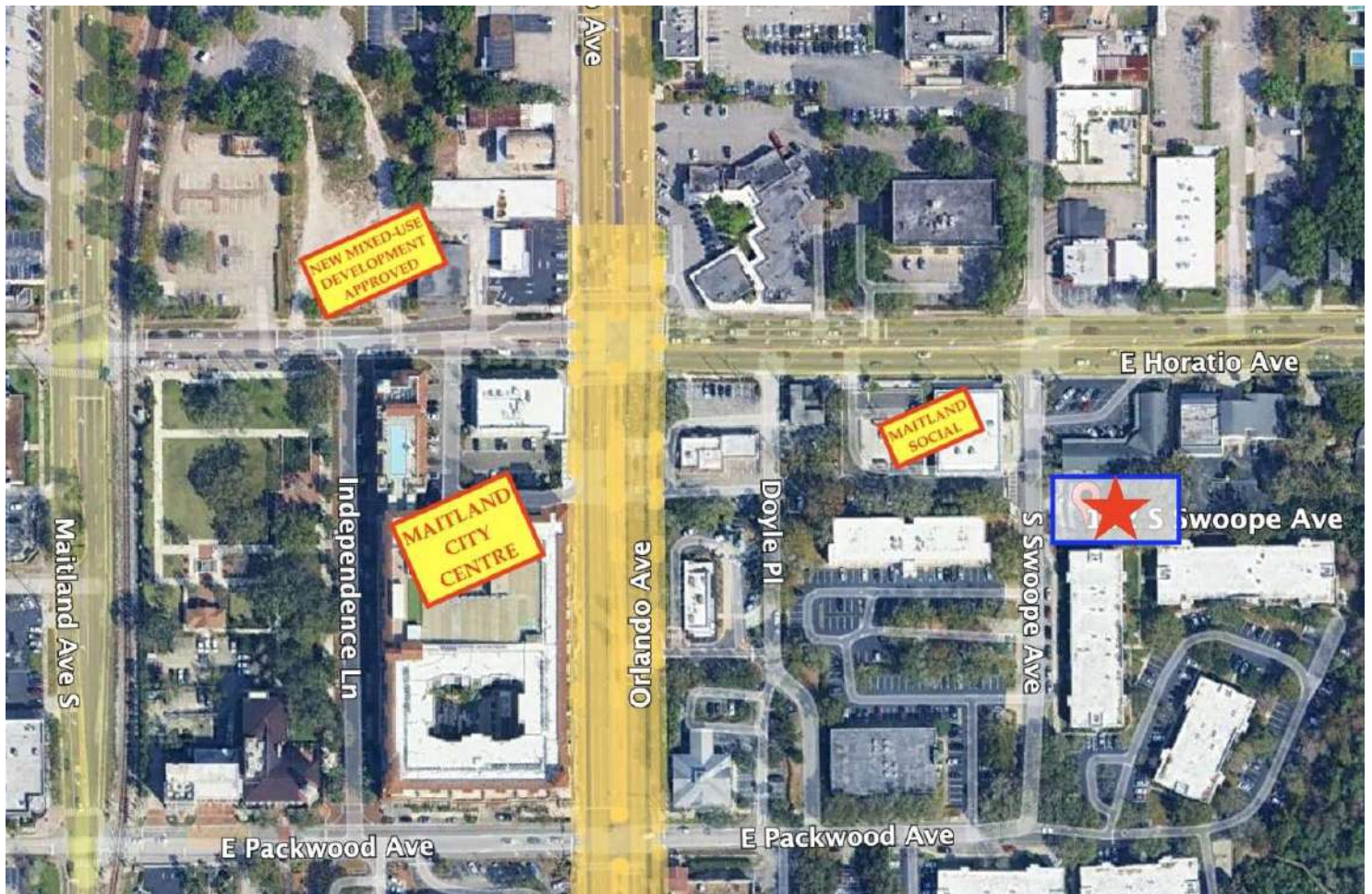
CITY COMMERCIAL
1101 Symonds Ave.
Winter Park, FL 32789
CITYCommercial.com



FOR SALE

142 S SWOOPE AVE | MAITLAND, FL 32751

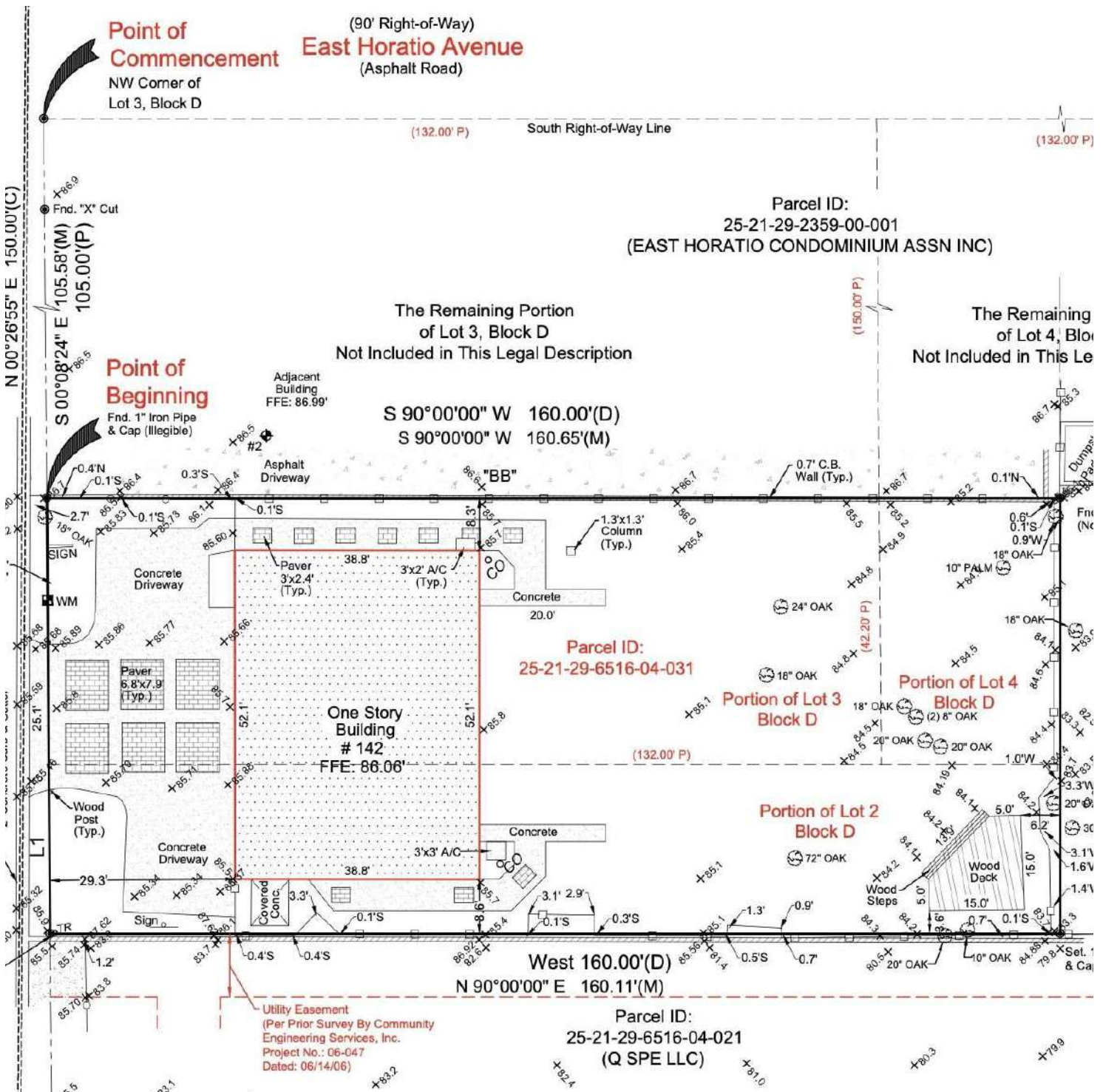
Location Map



LEE ZERIVITZ, SIOR, CCIM
Managing Partner
407.644.CITY
lee@citycommercial.com

CITY COMMERCIAL
1101 Symonds Ave.
Winter Park, FL 32789
CITYCommercial.com

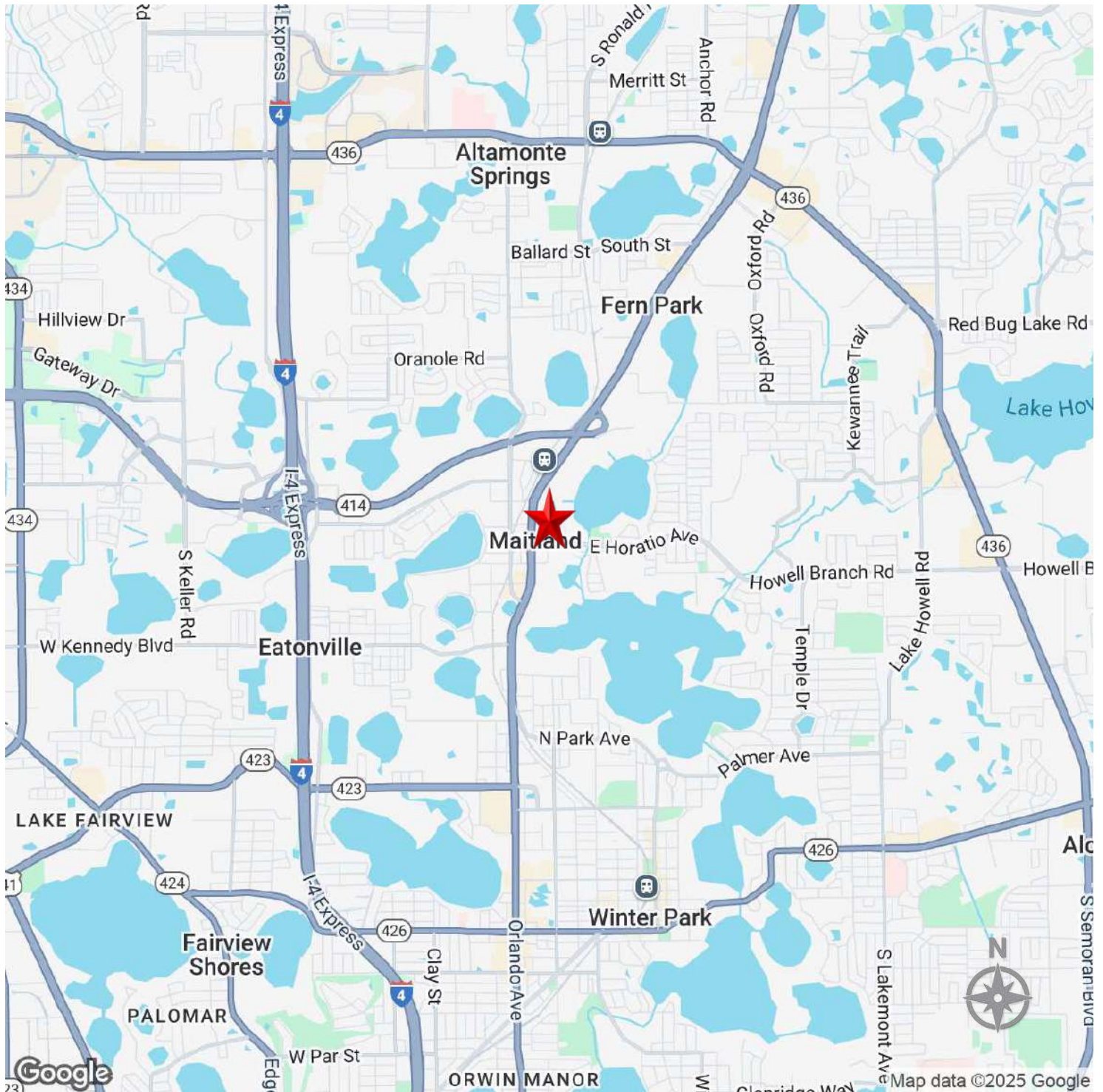




FOR SALE

142 S SWOOPE AVE | MAITLAND, FL 32751

Map



LEE ZERIVITZ, SIOR, CCIM
Managing Partner
407.644.CITY
lee@citycommercial.com

CITY COMMERCIAL
1101 Symonds Ave.
Winter Park, FL 32789
CITYCommercial.com

