

Visible and highly walkable restaurant and retail opportunities in the heart of the Main Street District



RETAIL AT  
**The Adolphus**  
EST. 1912

**CBRE**

# Welcome to Downtown Dallas

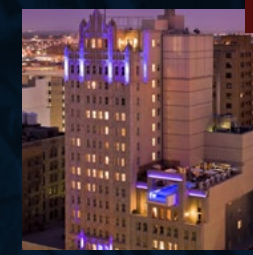
The Adolphus is in the heart of the Main Street District, a pedestrian-friendly environment with a beautiful arts scene, urban green spaces, fine dining, and luxurious shopping. The Adolphus Hotel's on-site restaurants and retail are complemented by many other high-end establishments like Neiman Marcus, The Joule Hotel, CBD Provisions, Monarch, Lucchese, Forty Five Ten, and Partenope.

DOWNTOWN HOTEL OCCUPANCY: 68.3%



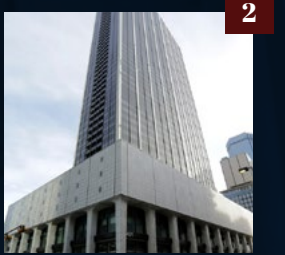
## THE JOULE

Constructed in 1927, the revitalized neo-Gothic landmark is a five-star hotel with 164 rooms. A wide range collection of art installations alongside several retail and dining experiences that make this a major Dallas destination.



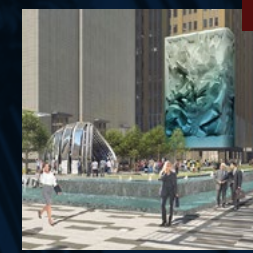
## THE NATIONAL

Built in 1965 and recently redeveloped and remonikered as The National, this project includes the Thompson hotel, luxury apartments, and retail.



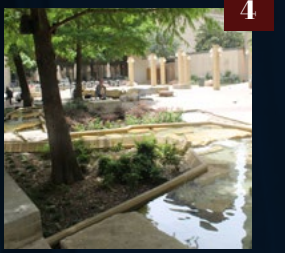
## AT&T DISCOVERY DISTRICT

AT&T's World HQ is a downtown hotspot where tech, entertainment and culture meet. After more than \$100 million invested, this project features 65K SF of retail, new restaurants, a food hall with over 18 stalls, and a massive, 104-foot-tall media wall.



## PEGASUS PLAZA

Pegasus Plaza was part of the movement to further the development of Main Street. It includes additional lighting and landscaping, creating an oasis in the heart of downtown.



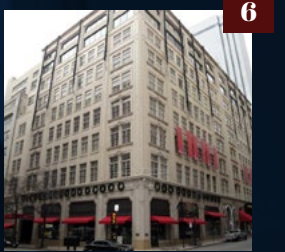
## FORTY-FIVE TEN

A four story building developed by Headington Companies including over 15 high-end retailers offering customers a unique mix of home, beauty and jewelry.



## NEIMAN MARCUS

The original Neiman Marcus opened in 1907 and continues to draw customers downtown to shop exclusive offerings.



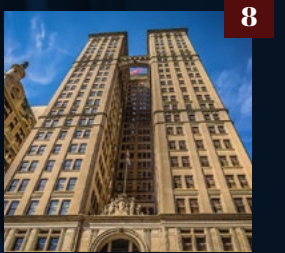
## THE EYE

This 30-foot-tall eyeball created by Chicago-based multimedia artist Tony Tasset sits right across the street from the Joule Hotel, which is known for its art collection.



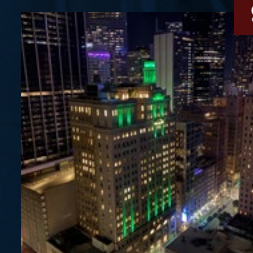
## MAGNOLIA DALLAS DOWNTOWN

Built in 1922, this was one of the first high-rise building in the United States. This 29-story building is a 329 room luxury hotel.



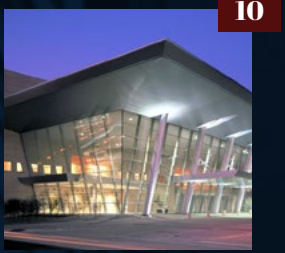
## THE DRAKESTONE

A luxury, 20-story high-rise two blocks down from The Joule. Developed by Headington Companies, this residential living has well-designed amenities that "set a new standard for urban living."



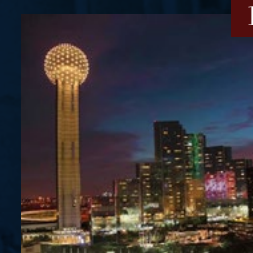
## CONVENTION CENTER

The Kay Bailey Hutchison Convention Center is one of the largest convention centers in the nation. Each year, over a million visitors attend major conventions, concerts, meetings and more.



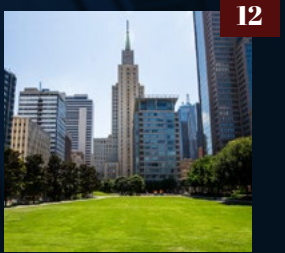
## REUNION TOWER

One of the Dallas skyline's most recognizable landmarks. Known as "The Ball", this tower has been a staple in the skyline since 1978. Sitting over 560 feet tall is a restaurant space and viewing deck looking over the entire city.



## MAIN STREET GARDEN PARK

A 1.75-acre green gathering space for downtown visitors, daytime workers, and residents that features live entertainment, art installations, water fountain, great lawn, dog area, kid play area, and City Cafe.



# An Icon

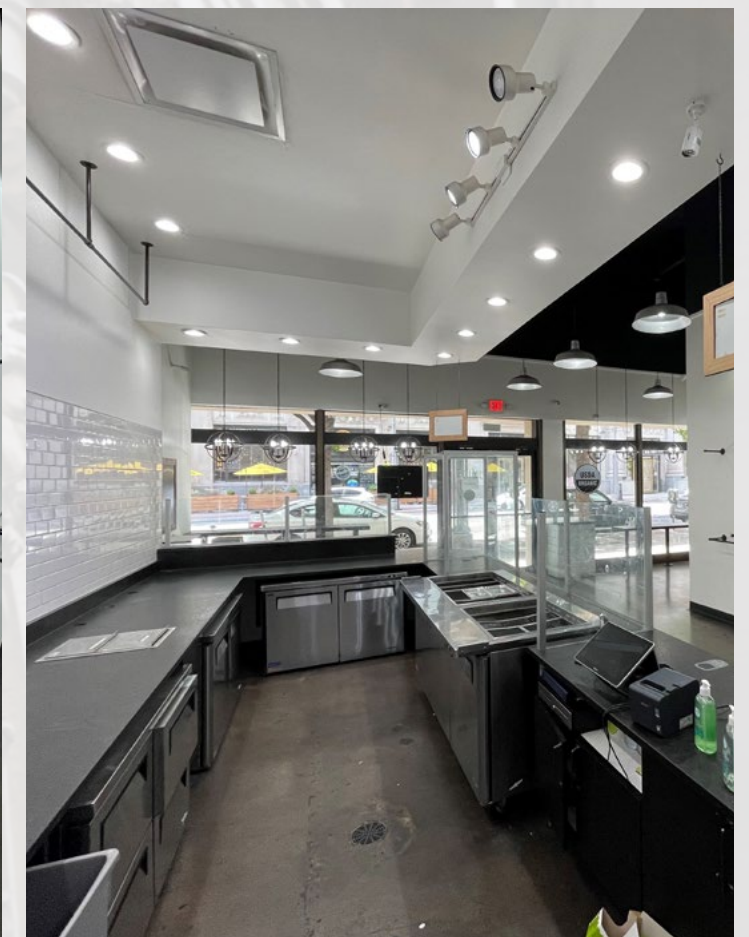
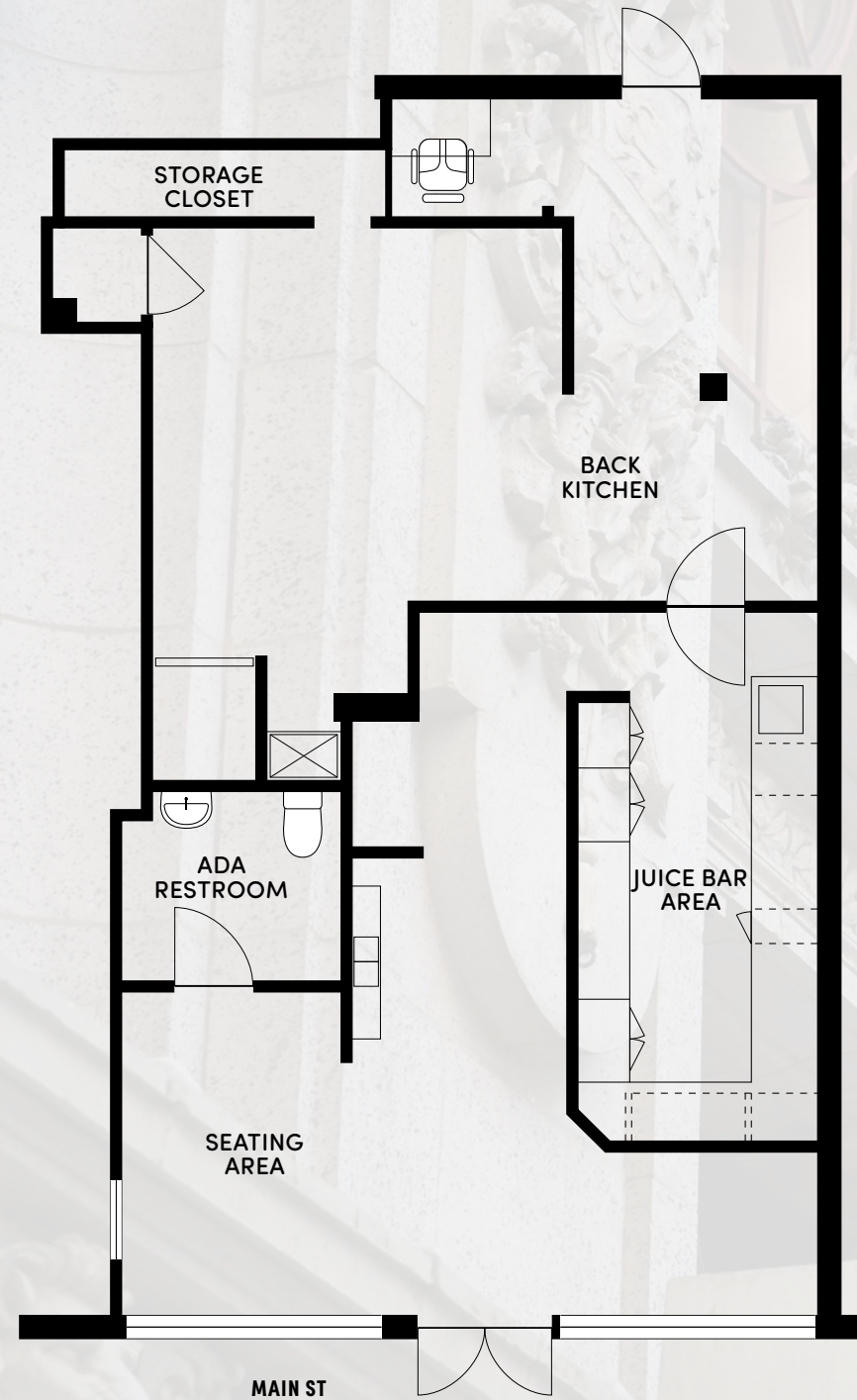
of the Dallas Luxury Scene



The tallest building at the time of its construction in 1912, the 22-story luxury Adolphus Hotel is favored by the royal elite and was recently dubbed one of the “Best Places to Stay in the World” by Condé Nast.

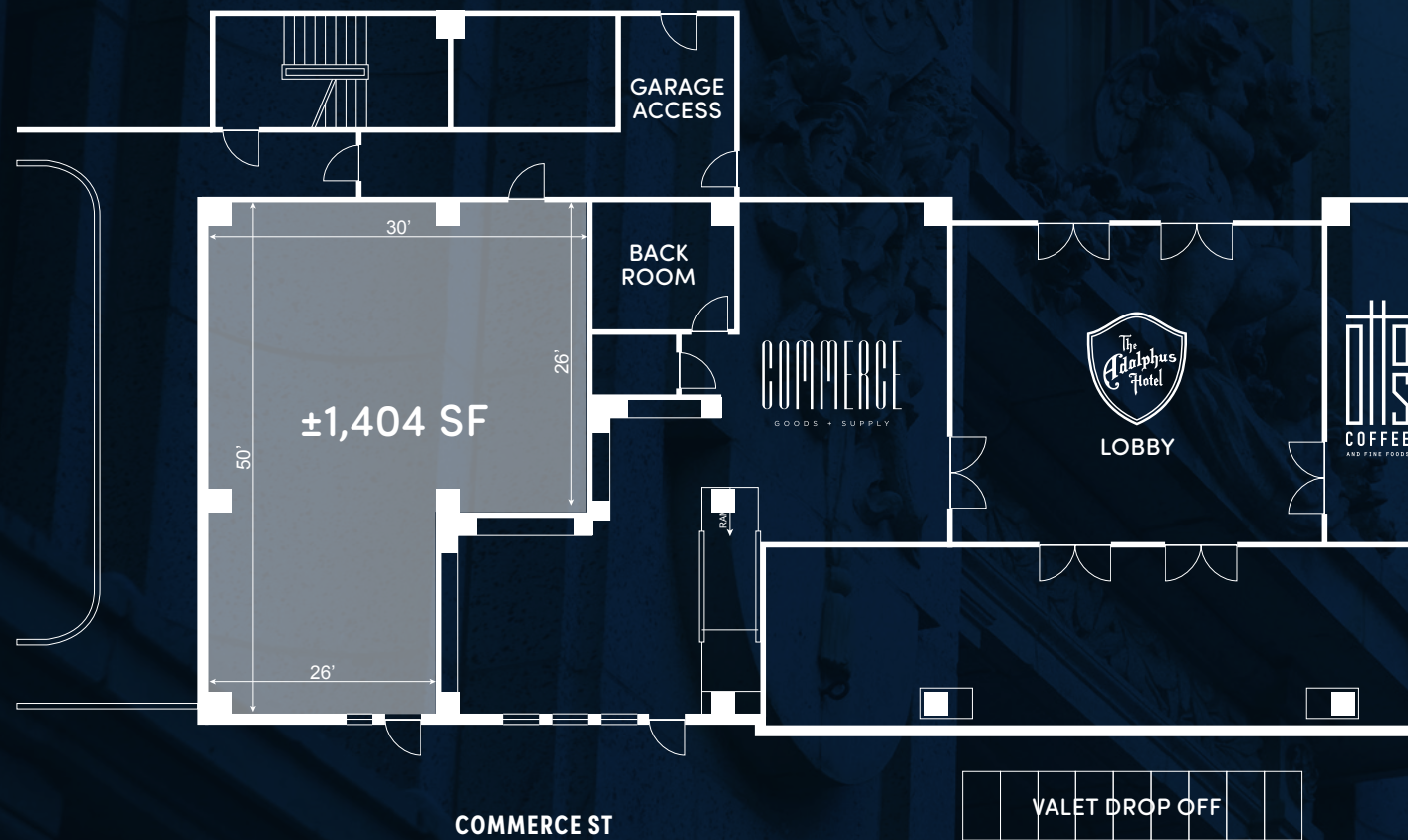
# 1302 MAIN ST

1,333 SF 2nd generation restaurant space well-suited for a fast casual dining or fresh juice bar concept



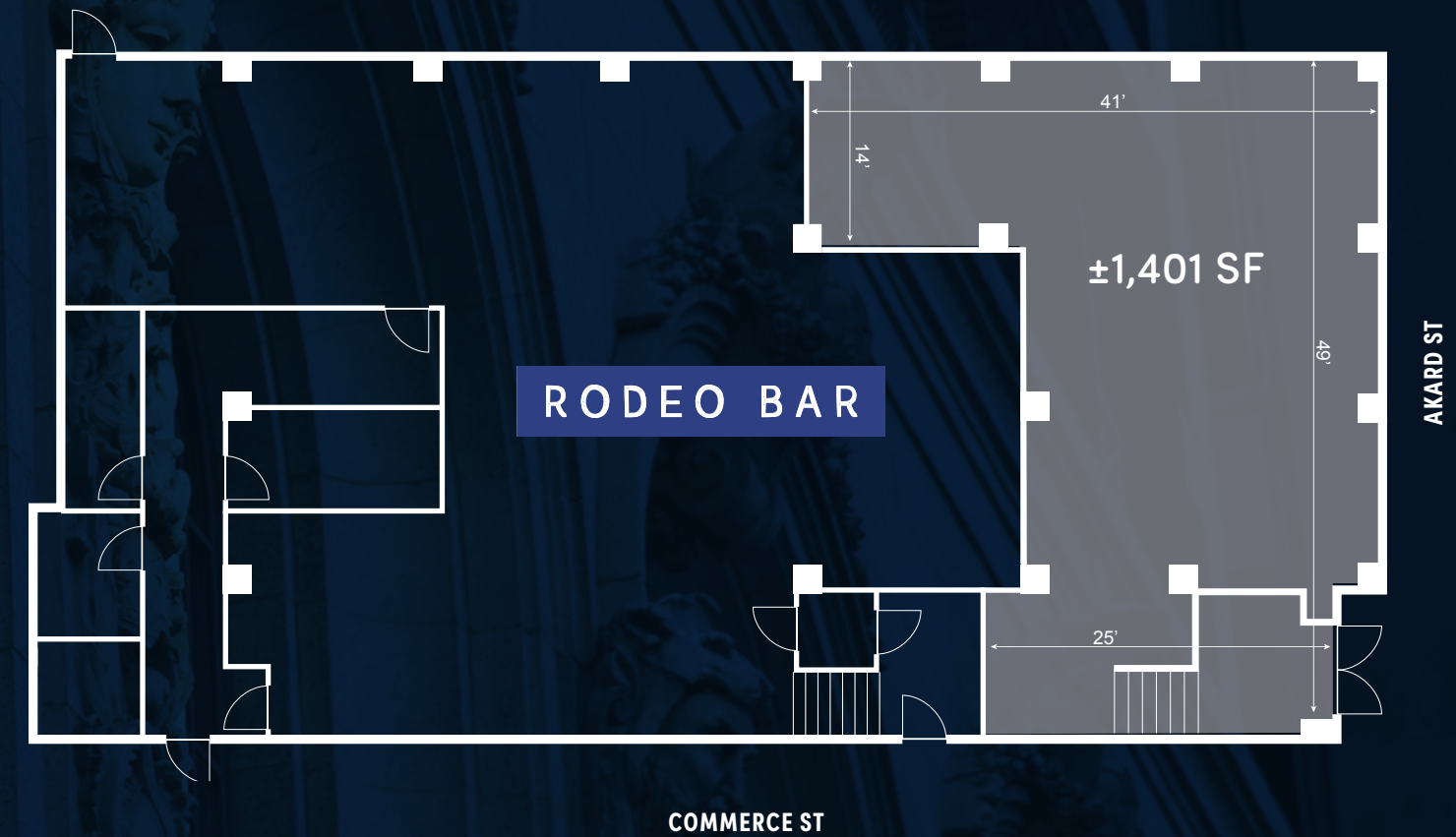
# 1321 COMMERCE ST

±1,404 SF (next to Commerce Goods + Supply)



# AKARD RETAIL

±1,401 SF Suitable for Restaurant or Retail





RODEO BAR



COMMERCE  
GOODS + SUPPLY

# Retail

at The Adolphus



otto  
COFFEE  
AND FINE FOODS



CITY HALL  
BISTRO



THE FRENCH ROOM



Sushi  
BY SCRATCH

The hotel is home to a highly curated blend of boutique retail and restaurants, including Sushi by Scratch, The French Room, City Hall Bistro, Otto's Coffee & Fine Foods, Rodeo Bar, and Commerce Goods+ Supply.



RETAIL AT  
**The Galolphus**  
EST. 1912

**FOR ADDITIONAL INFORMATION, PLEASE CONTACT:**

**Elizabeth H Fulton**

707 889 7872

[elizabeth.herman@cbre.com](mailto:elizabeth.herman@cbre.com)

**Marissa Stave**

214 709 4779

[marissa.stave@cbre.com](mailto:marissa.stave@cbre.com)

**CBRE**

© 2024 CBRE, Inc. All rights reserved. This information has been obtained from sources believed reliable, but has not been verified for accuracy or completeness. You should conduct a careful, independent investigation of the property and verify all information. Any reliance on this information is solely at your own risk.

CBRE and the CBRE logo are service marks of CBRE, Inc. All other marks displayed on this document are the property of their respective owners. Photos herein are the property of their respective owners. Use of these images without the express written consent of the owner is prohibited.