

# For Sale

**NAIDESCO**

## Trailblazer Commons

820 Elm Street, Godfrey, IL 62035



### Property Highlights



**For Sale**  
37,422 SF



**Student Housing**  
Apartment Buildings



**Adjacent to Lewis &**  
Clark College Campus



**Contact Broker**  
for Pricing

For more information, please contact:



**Tony Salerno**

d (314) 994 - 2322  
c (314) 703 - 6400  
tsalerno@naidesco.com



**Jeffrey Sanders**

d (314) 994 - 2325  
c (314) 578 - 1926  
jsanders@naidesco.com

**NAIDESCO**

8112 Maryland Ave, Suite 300  
St. Louis, MO 63105  
(314) 994 - 4800  
[naidesco.com](http://naidesco.com)



## Property Features

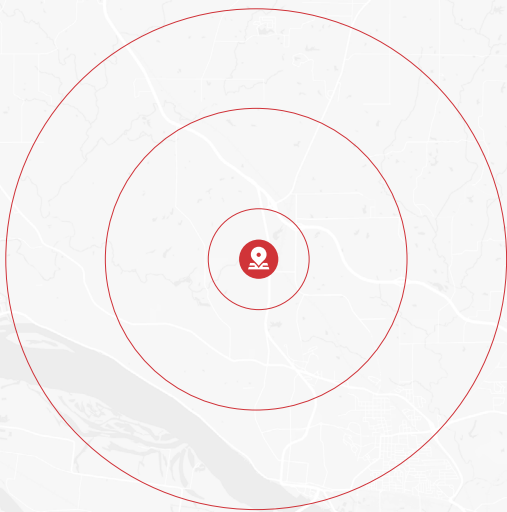
- 126-bed student housing buildings
- Building 1, built in 2014; Building 2, built in 2016
- Adjacent to the Lewis & Clark Community College campus
- Fully furnished apartments
- On-site laundry facilities
- All units include appliances and TVs
- Situated 6 miles north of Alton, IL

Learn more about  
Trailblazer Commons

Learn more about  
Lewis & Clark College



## Demographics



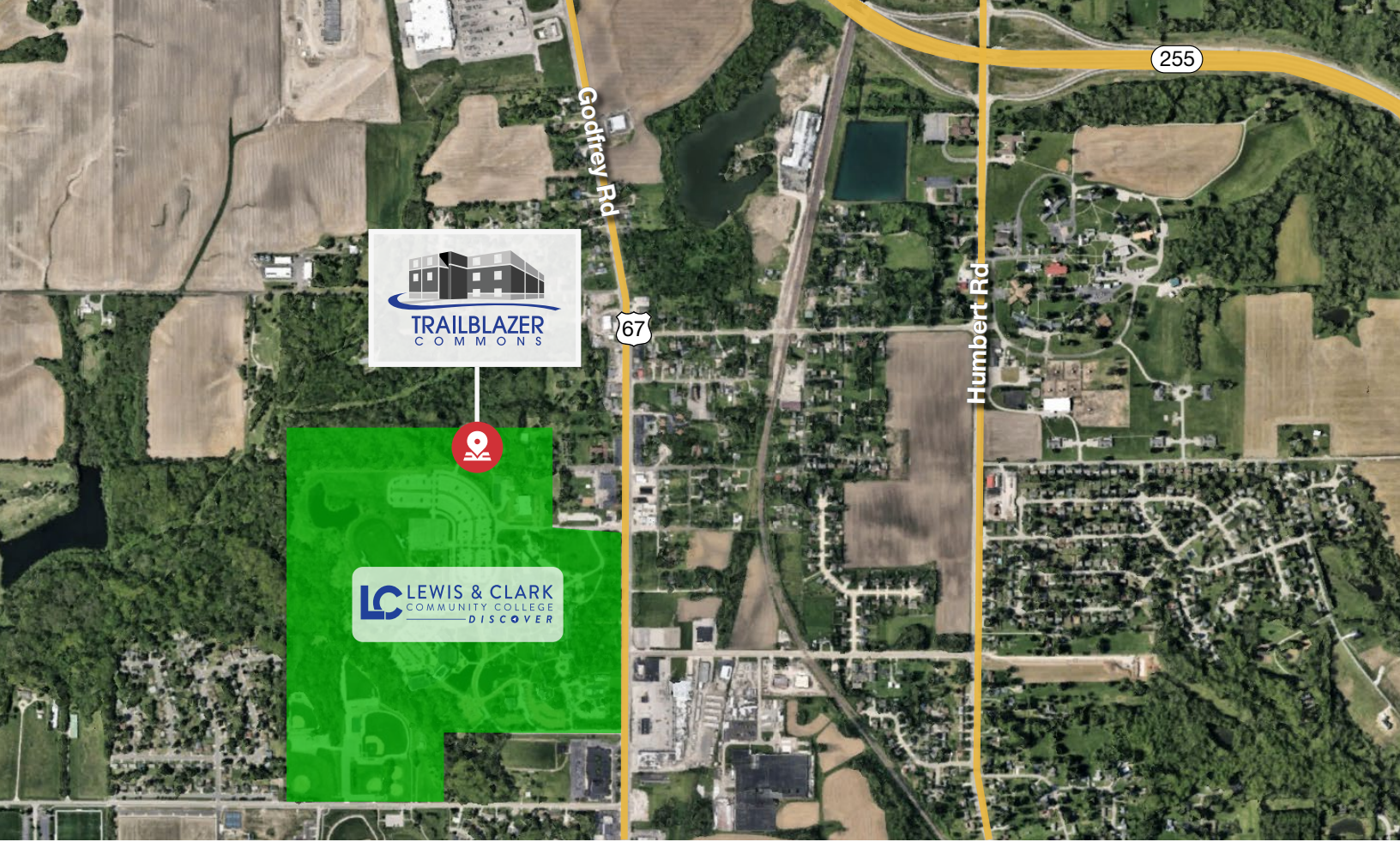
	POPULATION	AVG. HH INCOME	MED. HH INCOME	HOUSEHOLDS
1 MILE	2,446	\$89,752	\$74,756	937
3 MILES	19,421	\$90,041	\$71,372	8,122
5 MILES	40,087	\$80,100	\$62,024	17,116











**Tony Salerno**

d (314) 994 - 2322  
 c (314) 703 - 6400  
 tsalerno@naidesco.com



**Jeffrey Sanders**

d (314) 994 - 2325  
 c (314) 578 - 1926  
 jsanders@naidesco.com



**NAIDESCO**

8112 Maryland Ave, Suite 300  
 St. Louis, MO 63105  
 (314) 994 - 4800  
[naidesco.com](http://naidesco.com)