

FOR LEASE

Old Greenbrier Village – 2006 – 2010 Old Greenbrier Road | Chesapeake, VA 23320



For more information regarding this property, please contact:

Patrick L. Reynolds, CCIM

757 343 4666

patrickreynolds@naidominion.com



FOR LEASE

2006 - 2010 Old Greenbrier Road | Chesapeake, VA 23320



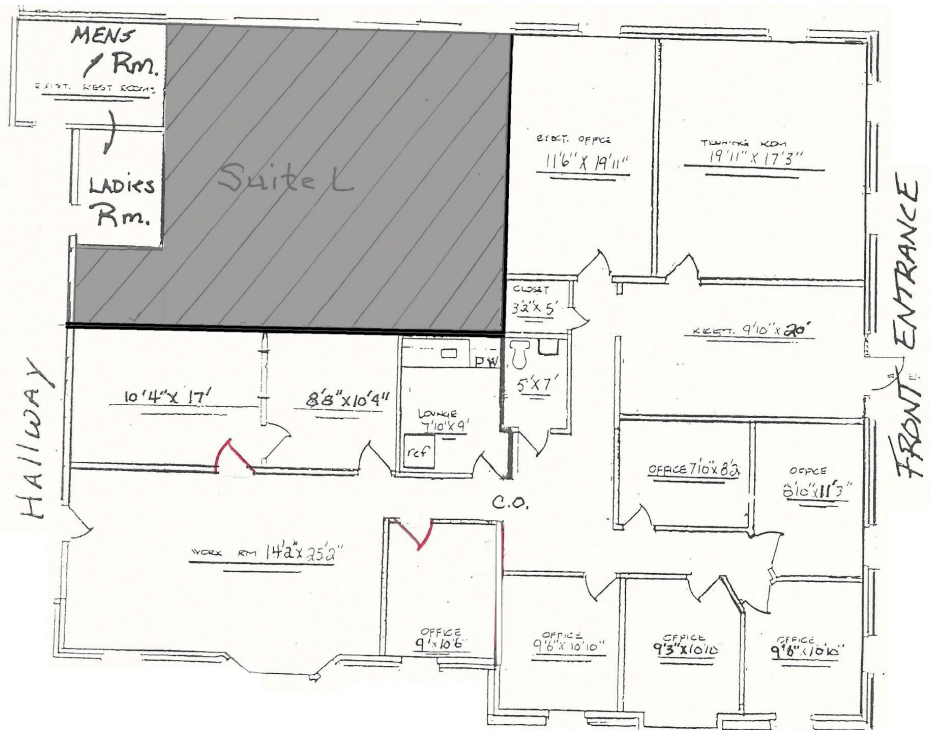
Suite: M

Available: August 2024

12 rooms, 9 offices, 3 open office area/training/conference room, Reception, Restroom, kitchenette, Private entry, access to common area restrooms

2,540 RSF

\$4,200 per month Modified-gross Tenant responsible for janitorial.



Suite M - 2,540 sqft



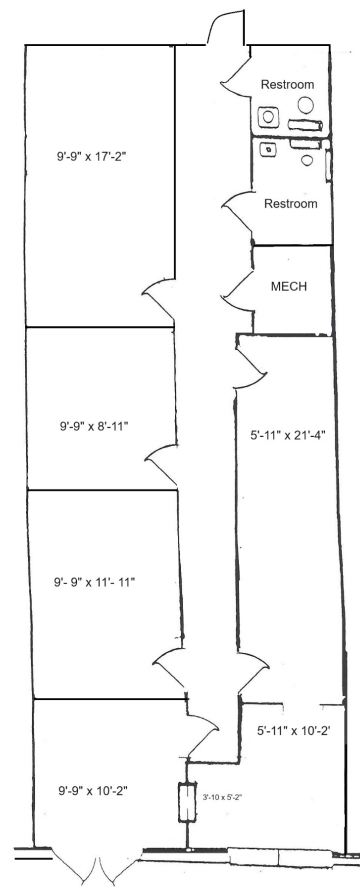
Suite: 6

Available: October 2024

6 rooms, 4 offices, 1 open office area/training/conference room, Reception, 2 Restroom, Private entry.

1,025 RSF

\$1,700 per month Modified-gross
Tenant responsible for janitorial and electrical.



Suite 6

1,025 sqft

Old Greenbrier Village

2006 Old Greenbrier Road, Chesapeake, VA 23320

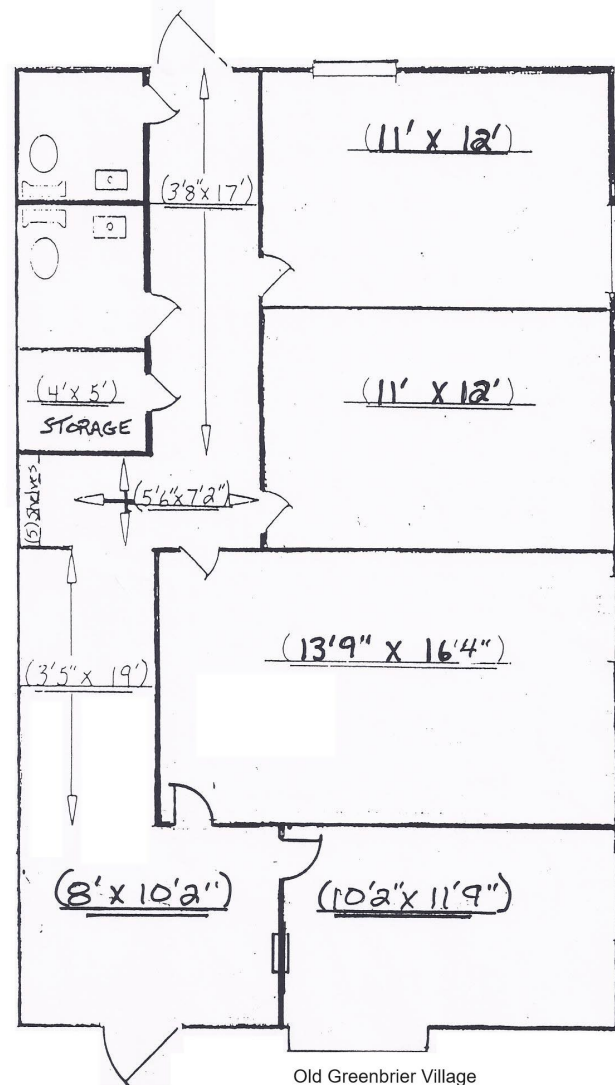
Suite: 7

Available: October 2024

5 rooms, 3 offices, 3 open office area/training/conference room, Reception, two Restroom, private entry

1,033 RSF

\$1,700 per month Modified-gross
Tenant responsible for janitorial and electrical.



Old Greenbrier Village
2006 Old Greenbrier Road, Chesapeake, VA 23320
Suite 7 - 1,033 square feet



FOR LEASE

2006 - 2010 Old Greenbrier Road | Chesapeake, VA 23320

SITE PLAN

Ample Parking





FOR LEASE

2006 – 2010 Old Greenbrier Road | Chesapeake, VA 23320



Freestanding Buildings



Professional Maintenance and Management



Great Access to Major Arterials



Proximity to Various Amenities



Prominent Building and monument Signage available



Ample Parking Spaces



DISTANCE TO

➔ NORFOLK INTERNATIONAL AIRPORT - 15 MINS
➔ I-64 HIGHWAY ACCESS - 1 MIN

➔ DOWNTOWN NORFOLK - 10 MINS
➔ NEAREST AMENITIES - 1 MIN

➔ NEAREST HOSPITAL - 9 MINS
➔ URGENT CARE - 5 MINS



FOR LEASE

2006 – 2010 Old Greenbrier Road | Chesapeake, VA 23320

SIGNIFICANT OPERATIONS IN GREENBRIER

GENERAL DYNAMICS

MITSUBISHI

FirstData

CHESAPEAKE REGIONAL HEALTHCARE

VOLVO

SENTARA

COX



DOLLAR TREE

