

MULTI BUILDING OFFICE & RETAIL SERVICE CENTER FOR LEASE

SHOPPES ON THE VILLAGE GREEN AT GOVERNOR'S POINTE
1877 - 1901 Governor's Pointe Drive, Suffolk, VA 23436



CONTACT BROKERS FOR AVAILABILITY

PETER ABRAHAM, CCIM


757.640.8226

PeterAbraham@HarveyLindsay.com


RYAN KING

757.952.8210

RyanKing@HarveyLindsay.com

 www.harveylindsay.com

 757.640.8700

 999 Waterside Drive | Suite 1400 | Norfolk, VA 23510

HARVEY LINDSAY

COMMERCIAL REAL ESTATE

PROPERTY INFORMATION

SHOPPES ON THE VILLAGE GREEN AT GOVERNOR'S POINTE

CURRENT AVAILABILITY:

- 1877 Governor's Pointe Dr, Suite A
- 1st floor space
- 1,200 SF
- \$2,300/month
- Zoning: B-1 (Neighborhood Commercial)
- Traffic Count: Governor's Pointe - 19,318 VPD

EXECUTIVE SUMMARY

Shoppes on the Village Green at Governor's Pointe is a multi-building office and retail service center in Suffolk, VA. The property was built in 2005 and features seven colonial style two-story buildings totaling 16,625 rentable square feet. Totaling at 2.27 acres, the property offers scenic landscaping and abundant parking. Tenants include M&M Hospitality, Quality Homes, Freedom Street Partners, Applied Physical Sciences, and Apothecary 1885 Salon. Located in the North Suffolk submarket, at the intersection of Bridge Road (19,318 VPD) and Governor's Pointe Drive, the site offers good access and excellent demographics. In the surrounding submarket, nearly 5,800 new residential units are under construction and approved. Another 3,350 new units are in planning.

KEY FACTS WITHIN 3 MILES



7,679
POPULATION

48.2 MEDIAN
AGE



2.57
AVG.
HOUSEHOLD
SIZE

\$175,287
Average Household
Income



124
TOTAL BUSINESSES



927
TOTAL EMPLOYEES



PETER ABRAHAM, CCIM

757.640.8226

PeterAbraham@HarveyLindsay.com

RYAN KING

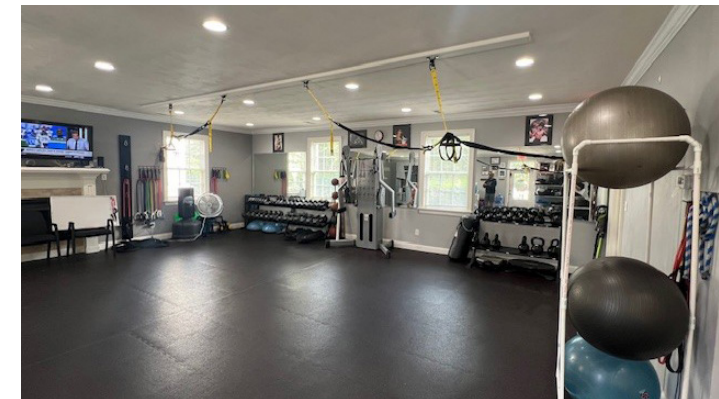
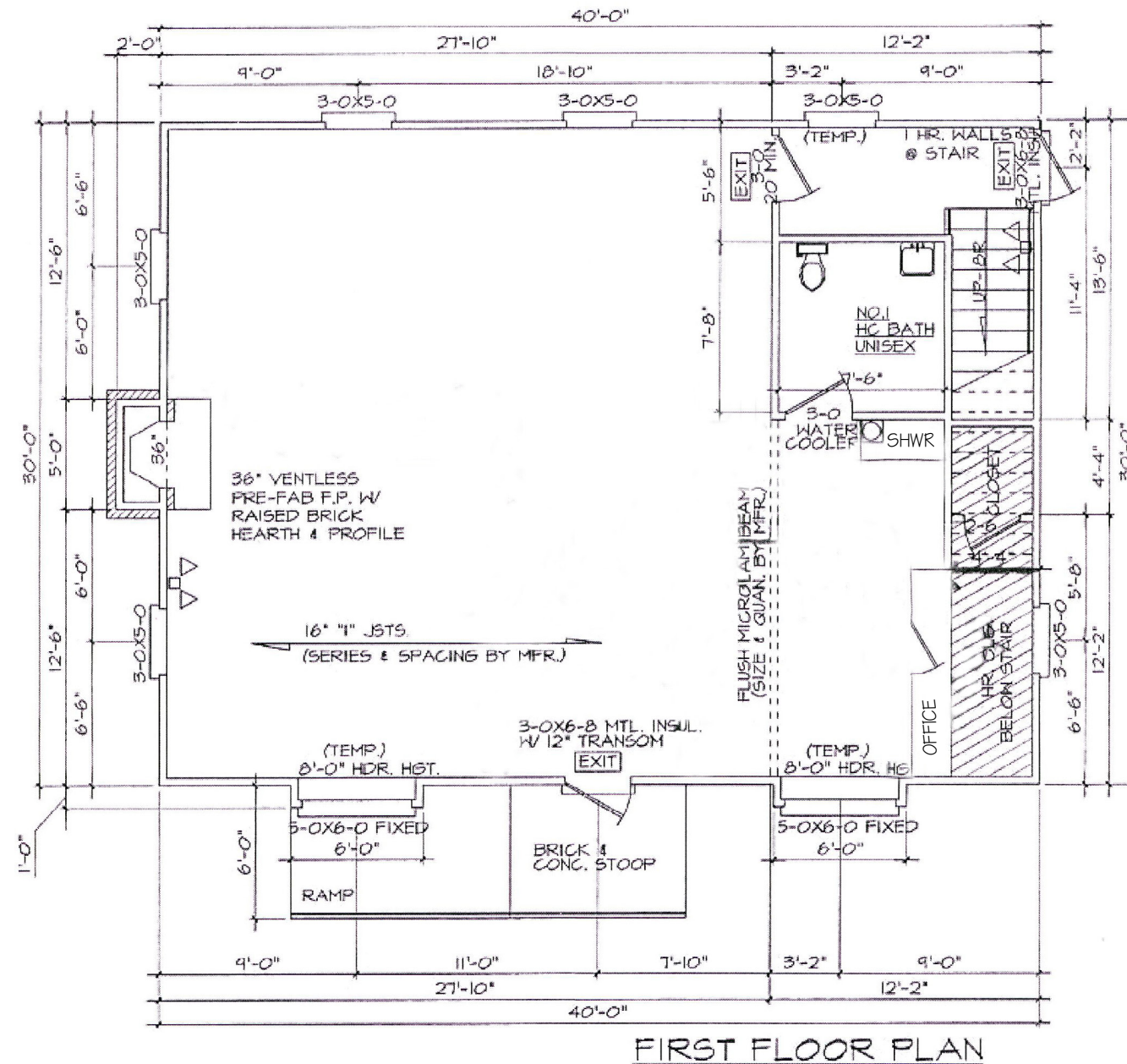
757.952.8210

RyanKing@HarveyLindsay.com

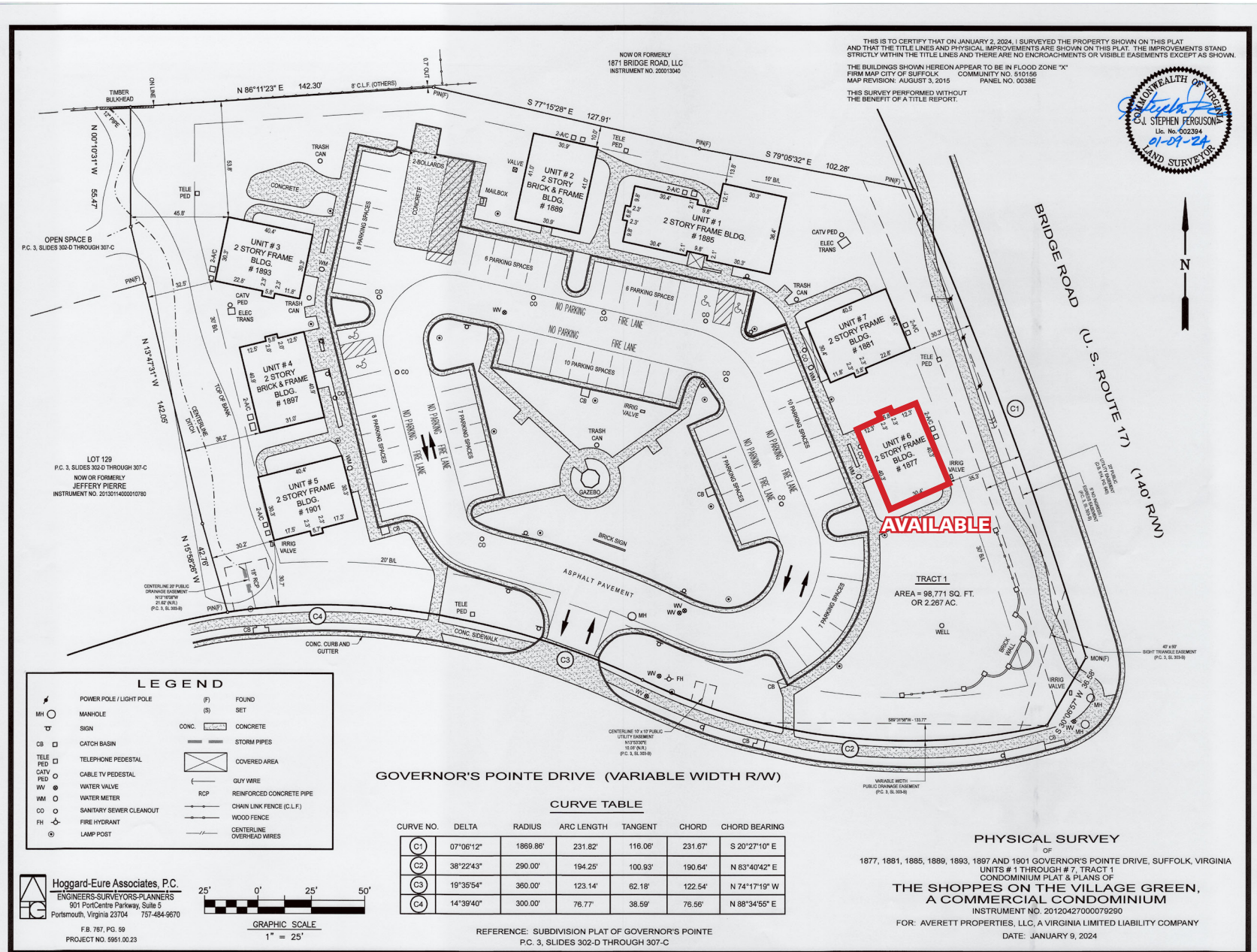
HARVEY LINDSAY

COMMERCIAL REAL ESTATE

1877 Governor's Pointe Drive **FLOOR PLAN**

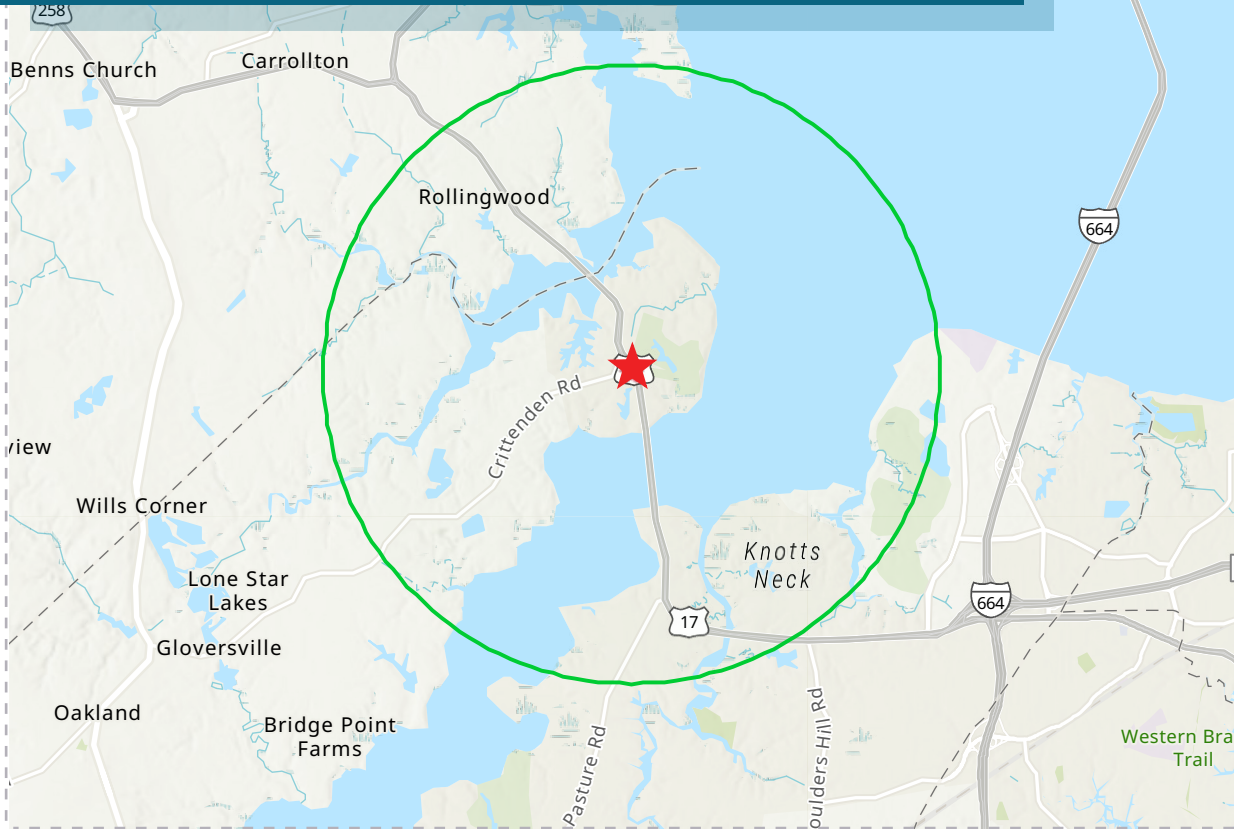


PROPERTY SURVEY



DEMOGRAPHIC PROFILE (2024)

1877-1901 GOVERNOR'S POINTE DRIVE
RING OF 3 MILES



EDUCATION

4.0%

No High School
Diploma



22.8%

High School
Graduate



45.5%

Bachelor's/Grad/
Prof Degree

EMPLOYMENT



White Collar

73%



Blue Collar

16%



Services

11%

4.3%

Unemployment
Rate

KEY FACTS



7,679

Population



2,976

Households

48.2

Median Age



\$101,889

Median
Disposable
Income



124

Total Businesses



927

Total Employees

BUSINESS

INCOME



\$127,930

Median
Household
Income



\$69,993

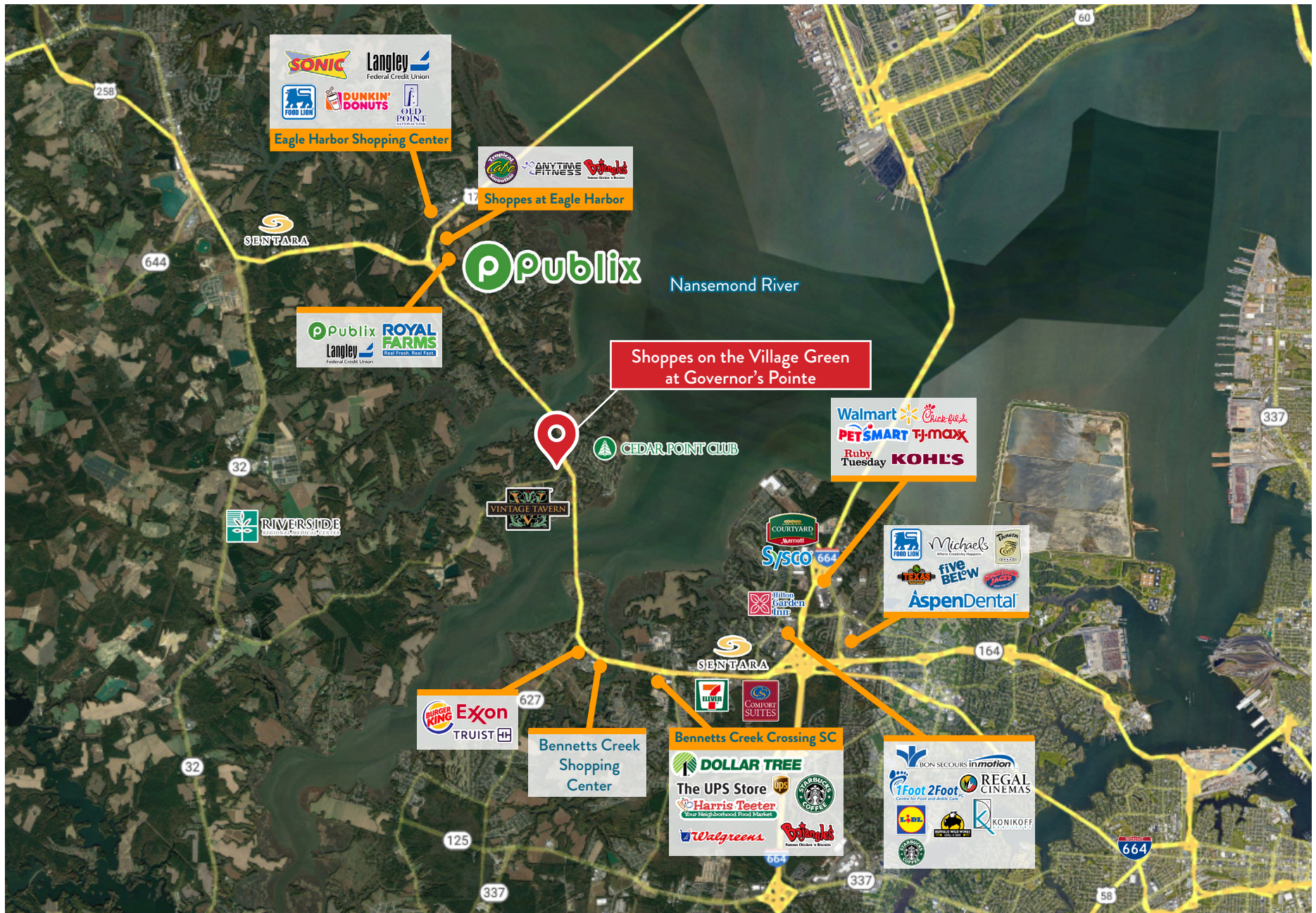
Per Capita
Income



\$862,627

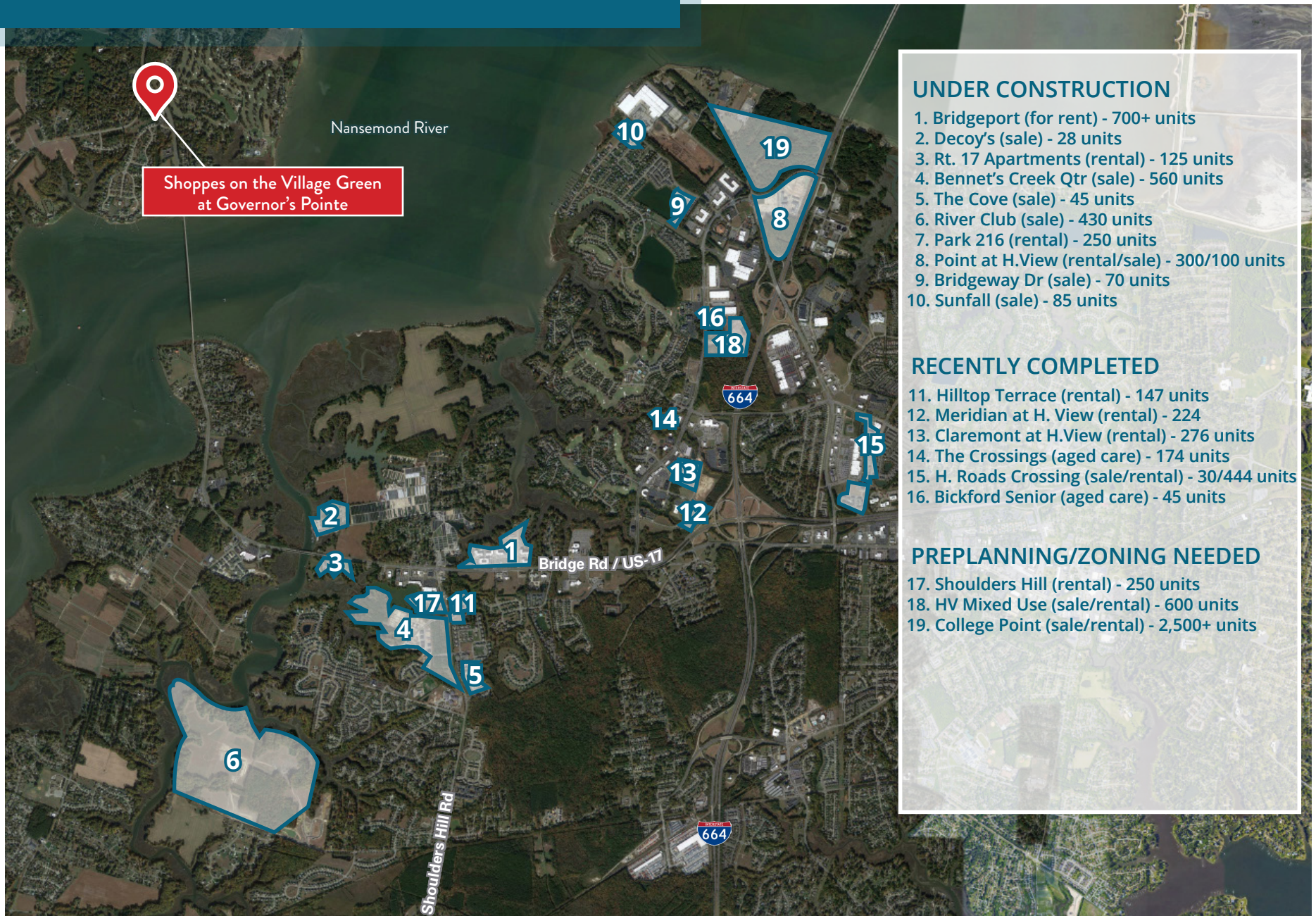
Median Net
Worth

RETAIL AERIAL



NEW RESIDENTIAL DEVELOPMENTS

SUFFOLK / HARBOUR VIEW SUBMARKET



UNDER CONSTRUCTION

1. Bridgeport (for rent) - 700+ units
2. Decoy's (sale) - 28 units
3. Rt. 17 Apartments (rental) - 125 units
4. Bennet's Creek Qtr (sale) - 560 units
5. The Cove (sale) - 45 units
6. River Club (sale) - 430 units
7. Park 216 (rental) - 250 units
8. Point at H.View (rental/sale) - 300/100 units
9. Bridgeway Dr (sale) - 70 units
10. Sunfall (sale) - 85 units

RECENTLY COMPLETED

11. Hilltop Terrace (rental) - 147 units
12. Meridian at H. View (rental) - 224
13. Claremont at H.View (rental) - 276 units
14. The Crossings (aged care) - 174 units
15. H. Roads Crossing (sale/rental) - 30/444 units
16. Bickford Senior (aged care) - 45 units

PREPLANNING/ZONING NEEDED

17. Shoulders Hill (rental) - 250 units
18. HV Mixed Use (sale/rental) - 600 units
19. College Point (sale/rental) - 2,500+ units

NEW RESIDENTIAL & COMMERCIAL DEVELOPMENTS

NORTH SUFFOLK & WRIGHT OF ISLE COUNTY

