



675 PIPER BLVD

FOR LEASE • PREMIUM OFFICE FOR LEASE
675 PIPER BLVD UNIT 2 • NAPLES, FL 34110



Quigley Eye
SPECIALISTS

The
LASER & MED SPA

SIGNAGE

675

CONTACT US:

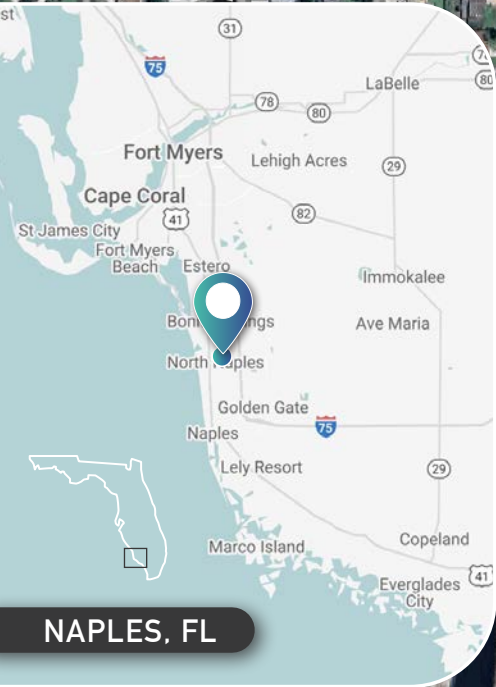
TIM SCHNEIDER
Partner
239.334.3040
tim.schneider@trinitycre.com

EDWIN SOLIS
Advisor
239.334.3040
edwin.solis@trinitycre.com



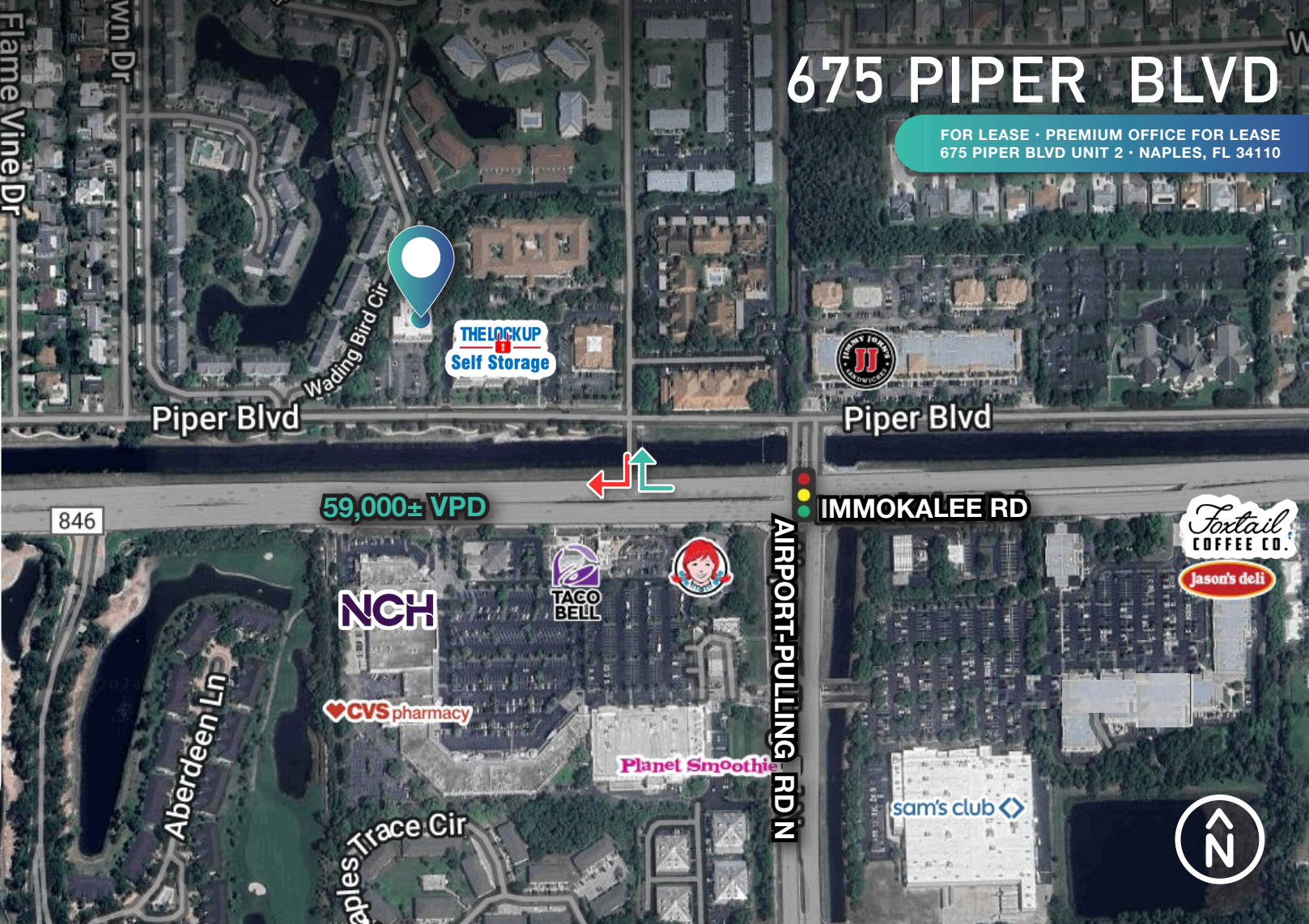
675 PIPER BLVD

FOR LEASE • PREMIUM OFFICE FOR LEASE
675 PIPER BLVD UNIT 2 • NAPLES, FL 34110



NAPLES, FL

2024 DEMOGRAPHICS 675 PIPER BLVD



59,000± VPD

846

IMMOKALEE RD

AIRPORT-PULLING RD N



AVERAGE H.H INCOME

\$153,475

\$175,881

\$178,534



POPULATION

8,623

52,831

128,474



EMPLOYMENT DENSITY

4,553

32,854

79,250

PROPERTY FEATURES

PRICE	\$30 per SF NNN
AVAILABLE	2,134 ±SF
ZONING	PUD
LOCATION	The subject site is located on the NEC of Piper Blvd & Wading Bird Cir.



trinitycre.com
9450 Corkscrew Palms Cir • Suite 101 • Estero, FL 33928
© 2024 Trinity Commercial Group
This information is considered accurate, but not guaranteed.



675 PIPER BLVD

FOR LEASE • PREMIUM OFFICE FOR LEASE
675 PIPER BLVD UNIT 2 • NAPLES, FL 34110

PROPERTY PHOTOS



trinitycre.com

9450 Corkscrew Palms Cir • Suite 101 • Estero, FL 33928

© 2024 Trinity Commercial Group

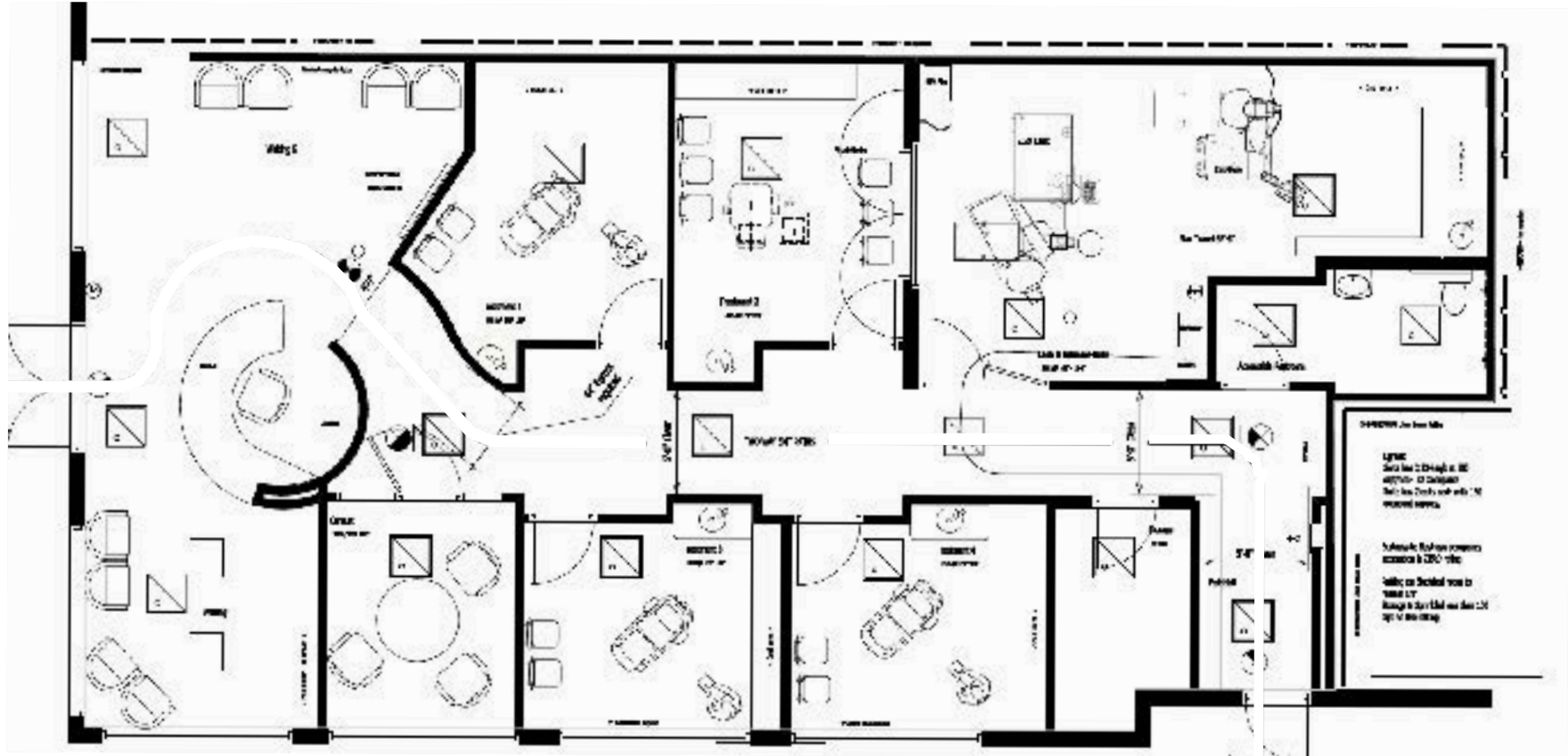
This information is considered accurate, but not guaranteed.



675 PIPER BLVD

FLOOR PLAN

FOR LEASE • PREMIUM OFFICE FOR LEASE
675 PIPER BLVD UNIT 2 • NAPLES, FL 34110



trinitycre.com

9450 Corkscrew Palms Cir • Suite 101 • Estero, FL 33928

© 2024 Trinity Commercial Group

This information is considered accurate, but not guaranteed.

