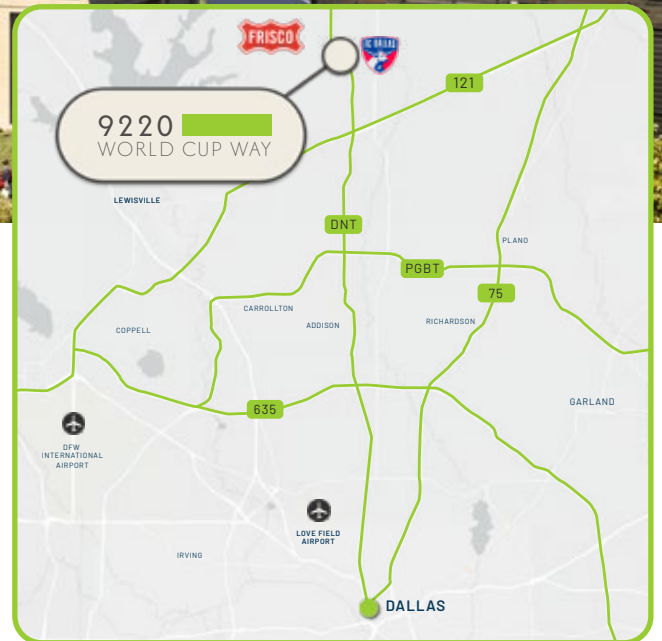


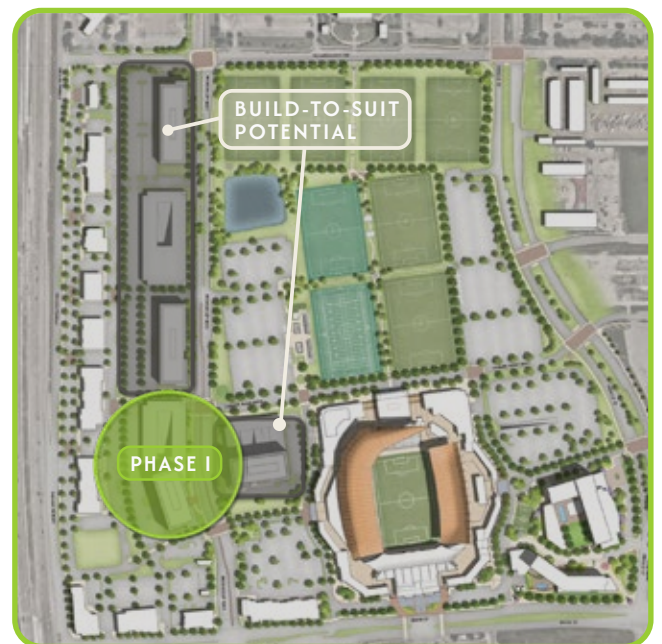
9220
WORLD CUP WAY
FRISCO, TX



FRISCO'S NEW FORWARD

Cawley Partners, in partnership with FC Dallas and the Hunt family, plans to develop a new class A office district next door to Toyota Stadium in Frisco, Texas.

The Gensler designed campus will be built in phases and could surpass 1 million square feet once completed. The new offices will integrate seamlessly into the broader vision for a mixed-use sports and entertainment district.



PHASE I

9220 
WORLD CUP WAY



205,000 SF

CLASS A OFFICE SPACE

8 FLOORS

HOSPITALITY-CENTRIC DESIGN

4:1000

STRUCTURED PARKING

24/7

SECURITY

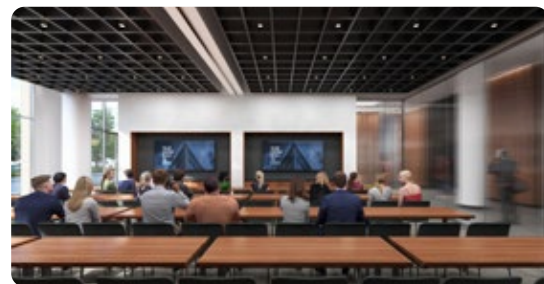
Dramatic two-story lobby

Multi-functional conference facility

Upscale tenant lounge

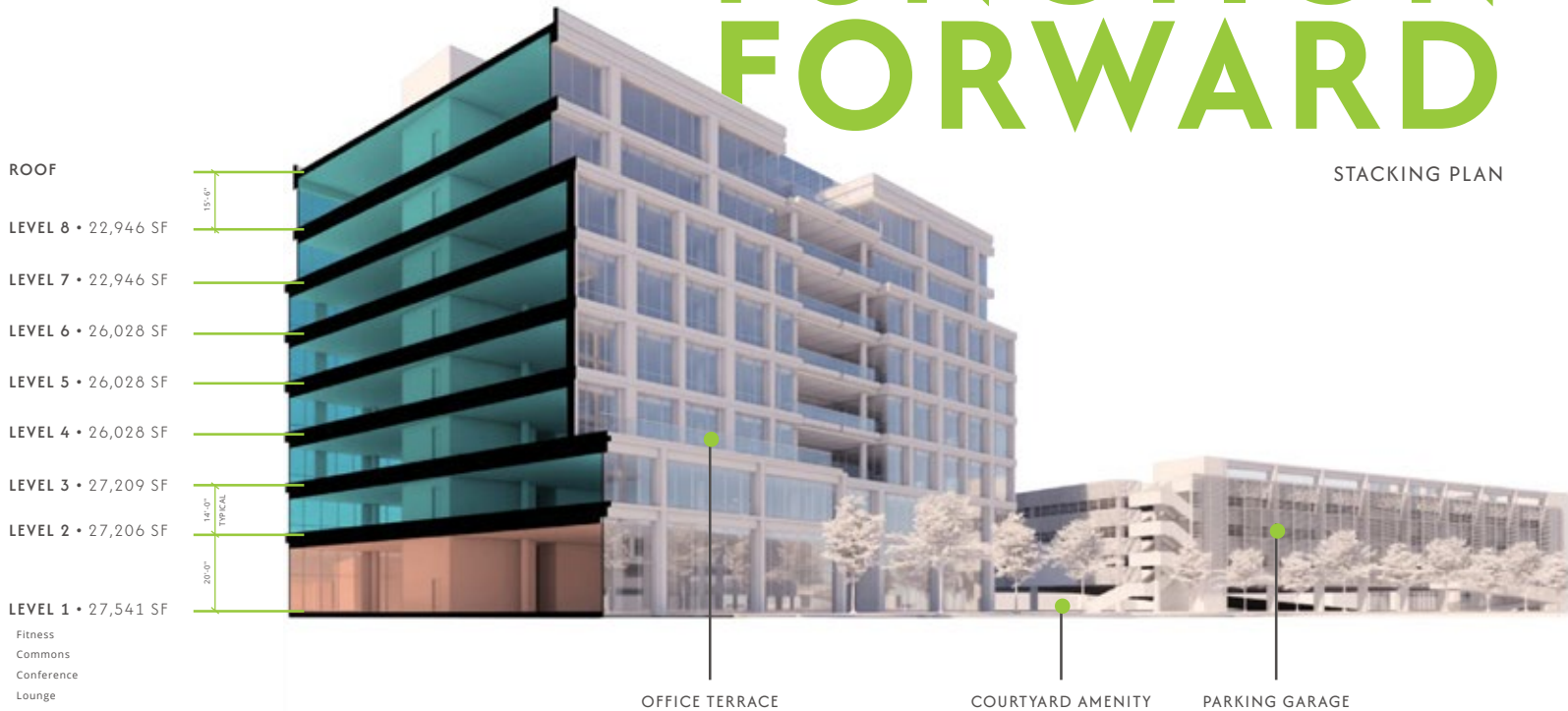
Shaded outdoor patio

Private, open-air decks



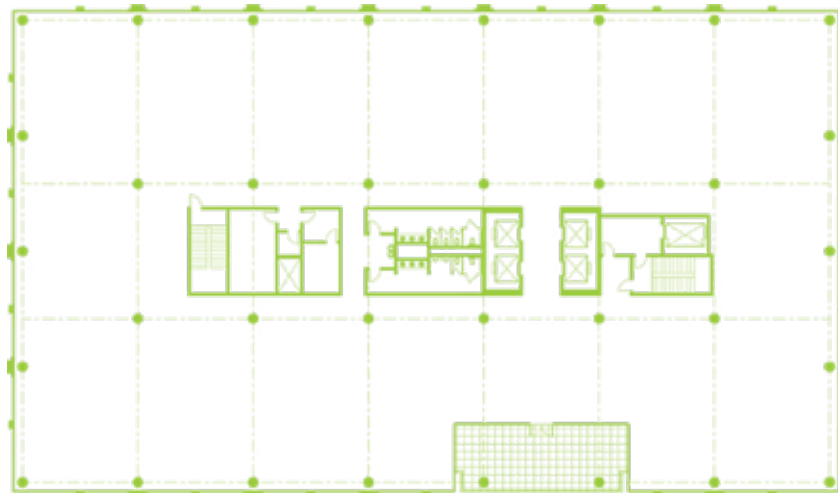
FUNCTION FORWARD

STACKING PLAN



FLOOR PLANS

Hyper-efficient floor plate offers a flexible canvas, perfect for your company's ideal layout. Maximize space and productivity with endless configuration possibilities.



FLOOR PLATE

26,028 RSF

FLOORS 4-6

OFFICE HEAVY



DESK HEAVY



STROLL ON OVER

DINING

- Selda Mediterranean Kitchen
- Frisco Diner
- Lemma Coffee Co.
- Wulf Burger
- Blue Goose Cantina
- Rudy's BBQ



WELLNESS

- Elan Med Spa and Clinic
- Boardroom Styling Lounge- Barber
- Industrious Frisco - Gym
- The NOW Massage Frisco



9220
WORLD CUP WAY
FRISCO, TX

CONTACT

JEREMY DUGGINS
jduggins@cawleypartners.com
972.759.7716

