



Colliers

# Centre650 650 Smithfield Street

**4,900 SF** First-Floor Retail Opportunity

**MARK ANDERSON**  
SENIOR VICE PRESIDENT  
RETAIL BROKERAGE | PITTSBURGH  
P: 412 515 8521  
[MARKE.ANDERSON@COLLIERS.COM](mailto:MARKE.ANDERSON@COLLIERS.COM)

**JONATHAN LEVINSON**  
SENIOR ASSOCIATE  
RETAIL BROKERAGE | PITTSBURGH  
P: 412 515 8545  
[JONATHAN.LEVINSON@COLLIERS.COM](mailto:JONATHAN.LEVINSON@COLLIERS.COM)

**COLLIERS**  
525 WILLIAM PENN PLACE, STE. 3510  
PITTSBURGH, PA 15219  
P: 412 321 4200  
[WWW.COLLIERS.COM/PITTSBURGH](http://WWW.COLLIERS.COM/PITTSBURGH)





## Prime Location



## New Ownership and Vision



## Strong Market Position



## Branding Opportunities



## Excellent Accessibility

Situated in the heart of Downtown Pittsburgh, this property offers unparalleled visibility and access for retailers looking to establish a strong presence in the city's bustling urban core. Located along Smithfield Street, a key commercial corridor, this prime ground floor retail space benefits from high pedestrian and vehicular traffic, drawing professionals, residents, and visitors alike.

Surrounded by major office buildings, hotels, and cultural attractions, the property is positioned to capture a steady flow of customers throughout the day, with its proximity to Market Square, PPG Place, and major transit connections significantly enhancing convenience.



### February 2025 Downtown Activity Snapshot

#### ACTIVITY



**95,192**

Average daily Downtown users



**95%** daily activity

Based on February 2024 levels

#### MOBILITY



**73%**

Parking garage utilization rate



**380,000 +**

Monthly bus ridership

#### VISITORS & EMPLOYEES



**41,260**

Average daily Downtown workers



**89%** Monthly Visitor Levels

Based on February 2024 levels

#### PLACES OF INTEREST



**189,670**

Market Square visitors



**342,206**

Cultural District visitors



**5,417**

Point State Park visitors

[Click here to view Downtown Pittsburgh's Activity Dashboard.](#)





Discover the ultimate convenience with endless dining, entertainment, bars, hotels, and top tourist attractions *just minutes away!*



## NEARBY **HOTELS**

1. The Westin
2. Courtyard
3. Drury Plaza
4. DoubleTree by Hilton
5. Kimpton Hotel Monaco
6. Renaissance Hotel
7. Wyndham Grand
8. Etage Executive Living
9. Hilton Garden Inn
10. The Industrialist Hotel
11. Stay Pittsburgh
12. Fairfield Inn & Suites
13. Embassy Suites
14. Omni William Penn Hotel



## IDEAL **USE CASES**



Law  
Firm



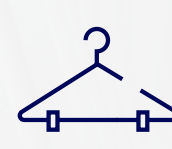
Financial  
Office



Juice  
Bar



Coffee  
Shop



Boutique



Art  
Gallery



## Downtown Pittsburgh Dining Map

### DOWNTOWN

- 1 Alihan's Coffee and Breakfast
- 2 Alihan's Mediterranean Cuisine
- 3 August Henry's City Saloon
- 4 Backstage Bar at Theater Square
- 5 Bakersfield
- 6 Barcadia
- 7 Barcelona Wine Bar
- 8 Bigelow Grille at DoubleTree
- 9 Bill's Bar & Burger
- 10 Blend Bar & Cigars
- 11 Braddock's Rebellion
- 12 Butcher and the Rye
- 13 The Capital Grille
- 14 Christos Mediterranean Grille
- 15 City Works Eatery & Pour House
- 16 CobblerWorld Baked Goods
- 17 The Commoner
- 18 Con Alma
- 19 Condado Tacos
- 20 Crafted North
- 21 Del Frisco's Double Eagle Steakhouse
- 22 Dibel's Subs
- 23 The Eagle Food & Beer Hall
- 24 Eddie Merlot's
- 25 Eddie V's Prime Seafood
- 26 Elevation
- 27 Eleven Contemporary Kitchen
- 28 Ephesus Mediterranean
- 29 Fifth Avenue Place
- 30 Five Iron Golf
- 31 fl.2
- 32 Fogo de Chao
- 33 Freshii
- 34 Gi-Jin

- 35 Giovanni's Pizza and Pasta
- 36 Hello Bistro
- 37 Hotel Monaco Biergarten
- 38 Howl at the Moon
- 39 Jimmy John's Sandwiches
- 40 La Gourmandine
- 41 McCormick & Schmick's
- 42 Meat & Potatoes
- 43 Millie's Homemade Ice Cream
- 44 Milk Shake Factory
- 45 Moe's Southwest Grill
- 46 Morton's The Steakhouse
- 47 Nicholas Coffee & Tea Co.
- 48 Ollie's Gastropub
- 49 Original Oyster House
- 50 Palm Court at Omni
- 51 Penn City Grille at Westin
- 52 Penn Society
- 53 Primanti Bros. Market Square
- 54 PrimoHoagies
- 55 Puttery Pittsburgh
- 56 Redbeard's Sports Bar & Grill
- 57 Revel
- 58 Ritual House
- 59 Rock 'n' Joe Coffee Bar
- 60 Ruth's Chris Steak House

- 61 Sally Ann's
- 62 Sienna Mercato
- 63 The Simple Greek
- 64 Sly Fox Taphouse at the Point
- 65 Sly Fox Brewery/Pub at The Highline
- 66 Social Circle
- 67 Social House 7
- 68 Space Bar
- 69 The Speakeasy at Omni
- 70 The Speckled Egg
- 71 The Standard Market & Pint House
- 72 Sullivan's Steakhouse Pittsburgh
- 73 takō
- 74 Talia Cucina

- 75 Tap/Terrace Room at Omni
- 76 The Terminal
- 77 3 Rivers Restaurant
- 78 Vallozzi's
- 79 Waffles, INCaffeinated

### NORTH SHORE

- 80 Bar Louie North Shore
- 81 Bistro To Go Café & Catering
- 82 BURN by Rocky Patel
- 83 Burgatory North Shore
- 84 Foundry Table & Tap
- 85 Hyde Park Prime Steakhouse
- 86 Mike's Beer Bar
- 87 North Shore Tavern
- 88 Rivers Casino Restaurants
- 89 Shorty's Pins x Pints
- 90 Southern Tier Brewery
- 91 Taps & Taco
- 92 Tequila Cowboy
- 93 Tom's Watch Bar

### STRIP DISTRICT

- Cadence+ At The Strip
- Cinderlands Warehouse
- DiAnio's Eatery
- Enrico Biscotti
- Kays
- Kingfly Spirits
- Pamela's Diner
- PaPa's Twin Plaza
- Peace, Love and Little Donuts
- Primanti Bros. Strip District
- Salem's Market & Grill
- Soluna Coffee & Mezcal
- The Pennsylvania Market
- The Terminal
- Wigle Whiskey

### NORTH SHORE

- 88 Rivers Casino
- 89 Shorty's Pins x Pints
- 90 Southern Tier Brewery
- 91 Taps & Taco
- 92 Tequila Cowboy
- 93 Tom's Watch Bar

### MT. WASHINGTON

- Bigham Tavern
- Coughlin's Law Kitchen and Ale House
- LeMont Restaurant
- Monterey Bay Fish Grotto
- Redbeard's on Shiloh
- Steel Mill Saloon

### STATION SQUARE

- Hard Rock Cafe
- Grand Concourse
- Texas de Brazil
- The Factory South Shore

Pittsburgh Light Rail Station

## ★ LOCATION AND ACCESS

650 Smithfield offers **unbeatable accessibility** for both customers and employees; with nearby bus stops, T-stations, and multiple parking garages, getting here is **quick and convenient**. Located just minutes from I-376 and I-279, the site provides an **easy commute** from Pittsburgh's top neighborhoods. This prime location ensures high visibility and foot traffic, making it an ideal spot for retailers looking to attract a steady stream of visitors while offering employees a hassle-free commute and a wide array of dining, entertainment, and bar options within walking distance.

VISIT  
PITTSBURGH  
DOWNTOWN  
DINING MAP

Click here!

UNMATCHED WALKABILITY

HIGH FOOT TRAFFIC

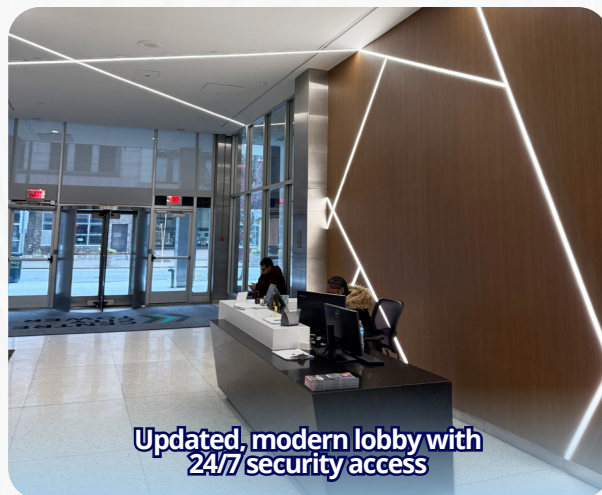
ENDLESS AMENITIES







**Fantastic visibility and highway access at the corner of Smithfield and Seventh**



**Updated, modern lobby with 24/7 security access**



**Recently renovated space with private office availability**



**Prime signage and branding opportunity with floor to ceiling windows**

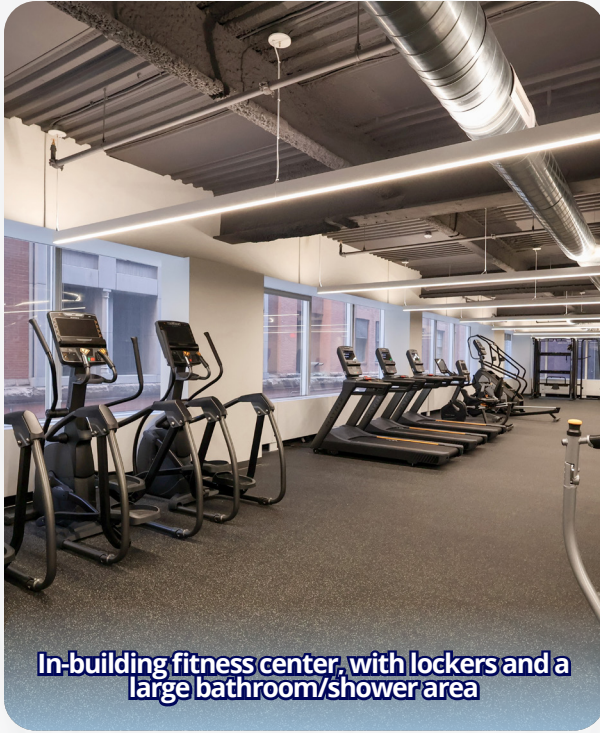


**Large, open floorplan**



**Ample natural lighting**

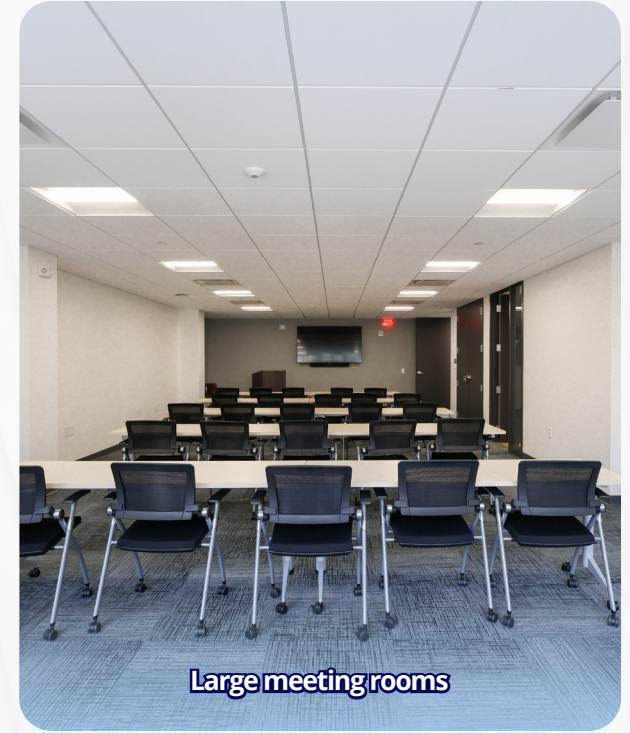




**In-building fitness center, with lockers and a large bathroom/shower area**



**Direct access to the building's amenities**



**Large meeting rooms**



**Communal breakroom on the 2nd floor**



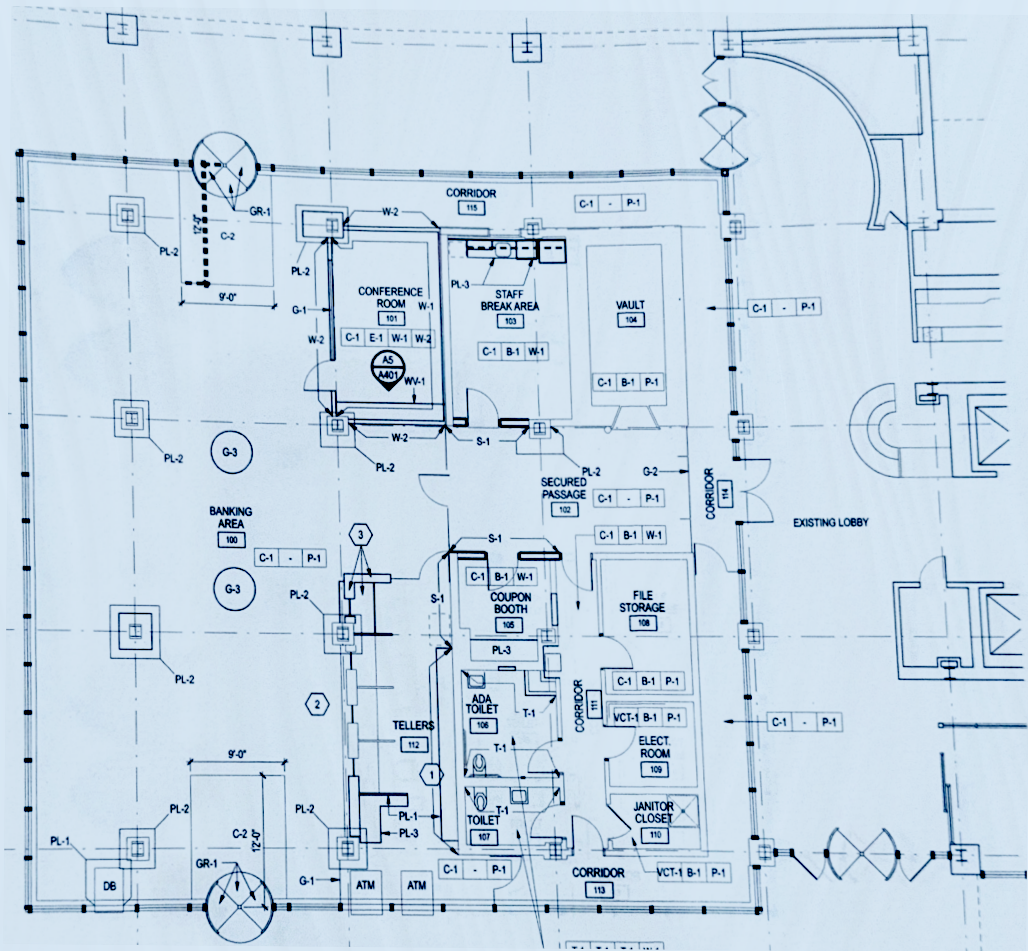
**Accessible space, with separate entrances for employees and visitors.**



**Conferencing facilities**



# PROPERTY FLOOR PLAN







Colliers

# Position your business in the heart of Downtown Pittsburgh.

Reach out to our Retail Brokerage team today!



**MARK ANDERSON**  
SENIOR VICE PRESIDENT  
RETAIL BROKERAGE | PITTSBURGH  
P: 412 515 8521  
[MARKE.ANDERSON@COLLIERS.COM](mailto:MARKE.ANDERSON@COLLIERS.COM)



**JONATHAN LEVINSON**  
SENIOR ASSOCIATE  
RETAIL BROKERAGE | PITTSBURGH  
P: 412 515 8545  
[JONATHAN.LEVINSON@COLLIERS.COM](mailto:JONATHAN.LEVINSON@COLLIERS.COM)