



10875 SAGE POINT CT.

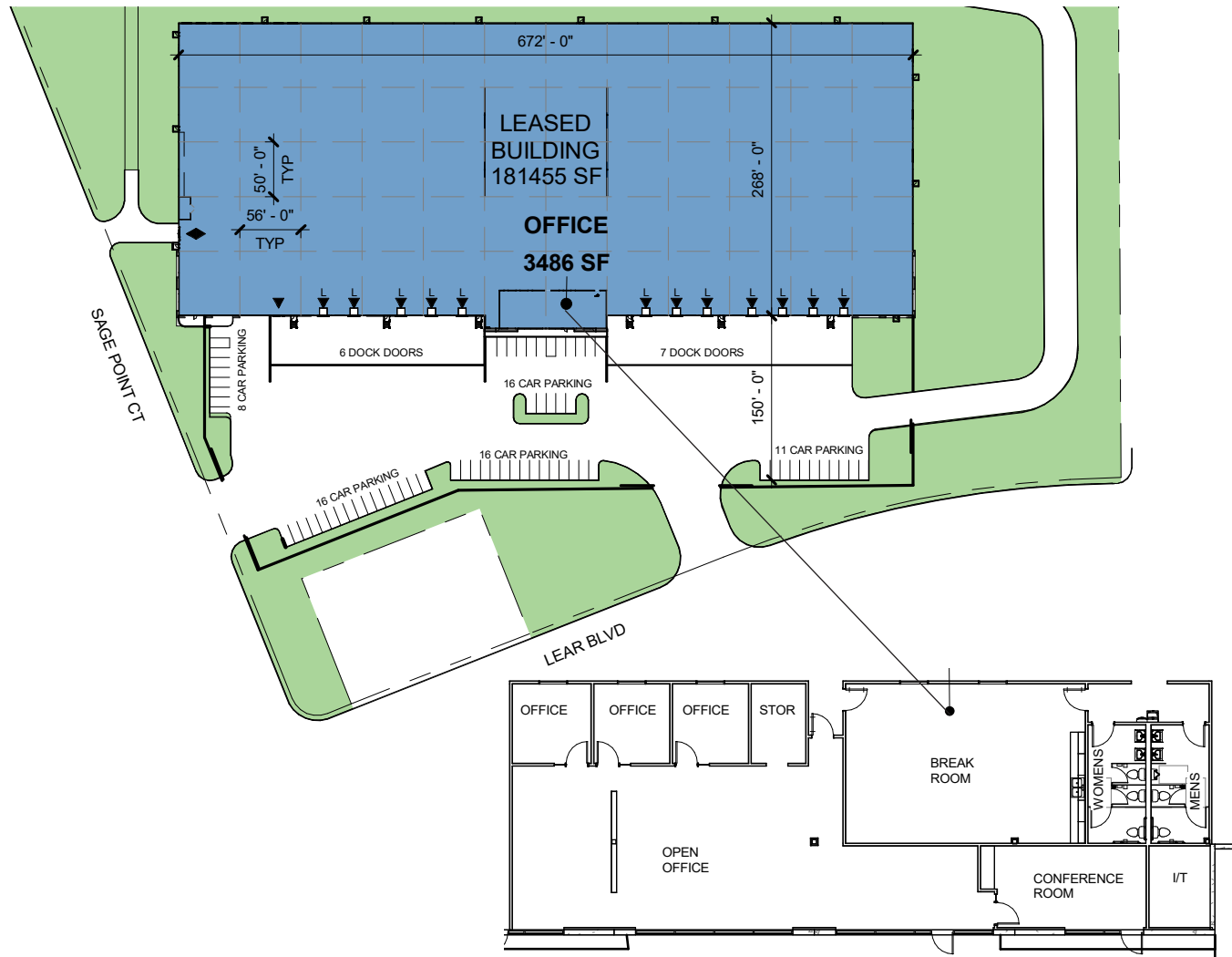
Prologis Sage Point 6

CBRE

 **PROLOGIS®**

Building Specifications

- 181,455 SF available
- 3,486 SF office area
- 30' clear height
- 50' x 56' column spacing
- 13 Dock doors
- 1 Drive in doors
- ESFR Sprinkler rating
- 1,000 Amps, 277/480V, 3 phase power
- 66 Auto parking spaces
- Built in 2005
- I-Industrial zoning



- Available
- Dock Door
- Drive-in Door



Population

Total Population

Total Daytime Population

1 MILE »	972	1,340
3 MILES »	30,286	20,082
5 MILES »	50,715	33,123



Household Income

Median

Average

Per Capita

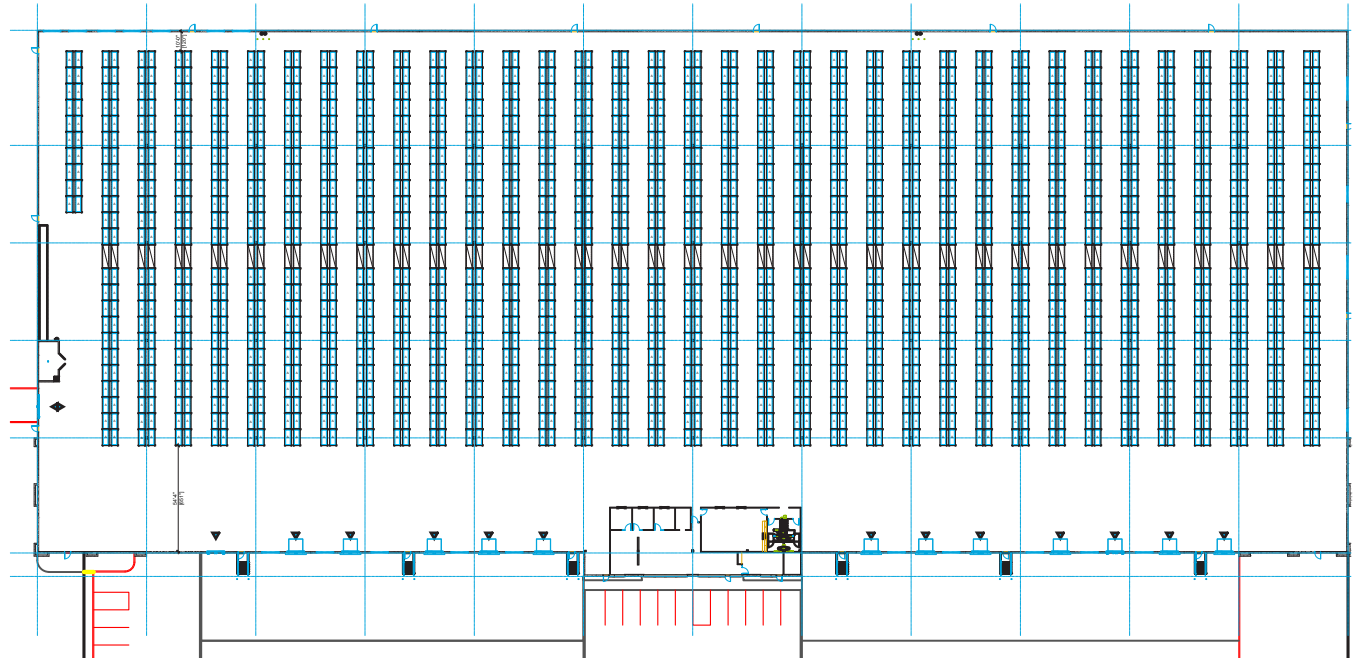
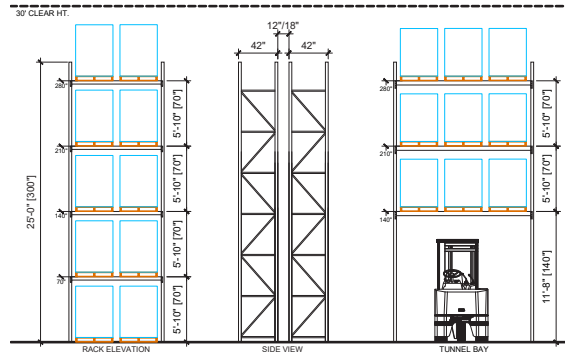
\$92,189	\$126,985	\$42,477
\$83,630	\$98,144	\$32,910
\$82,714	\$97,427	\$33,900

Potential Racking Options

16,452 Total Pallet Positions

10'-6" Aisle (Typical)

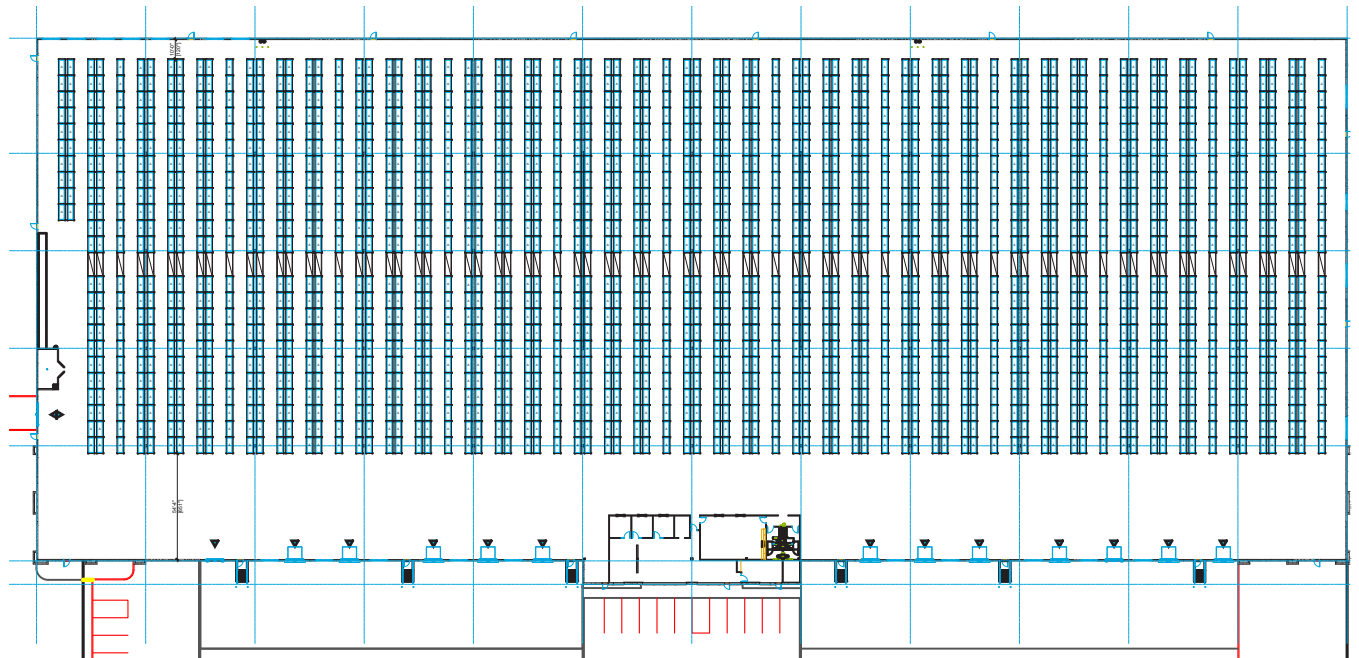
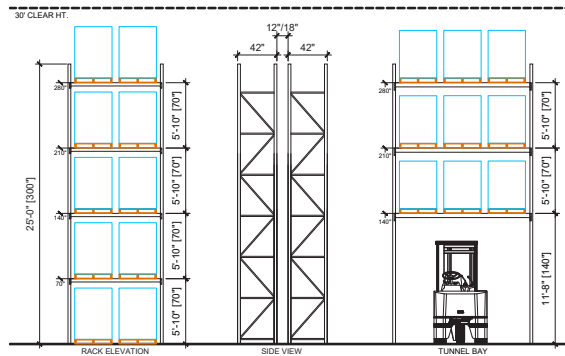
New and Used Racking Available

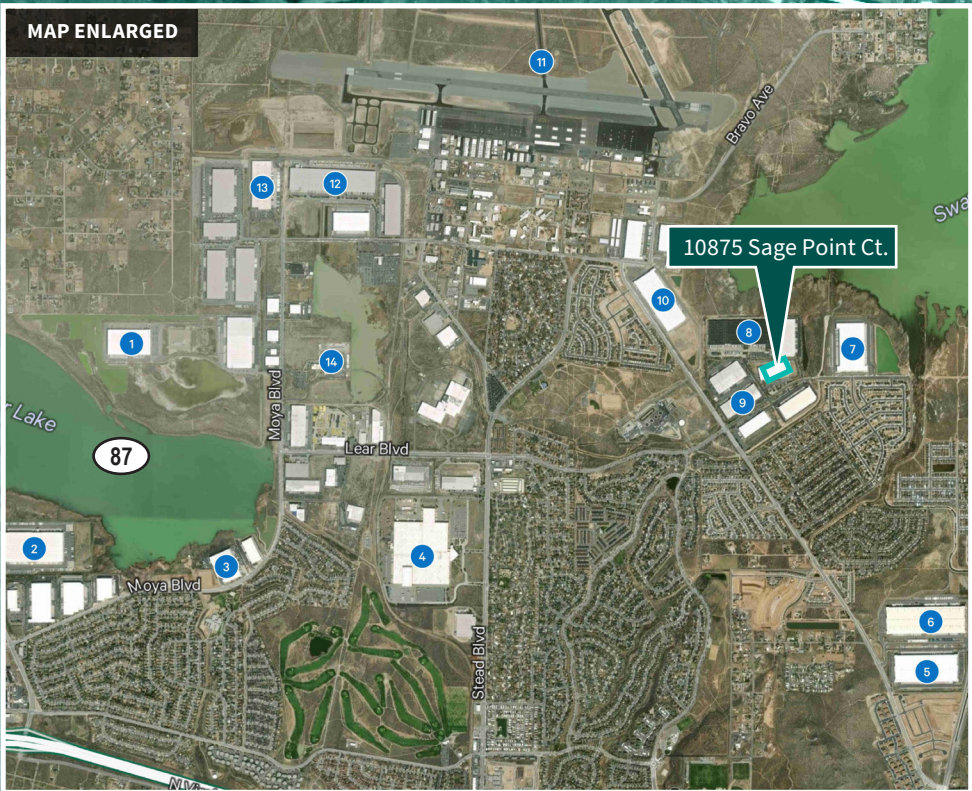
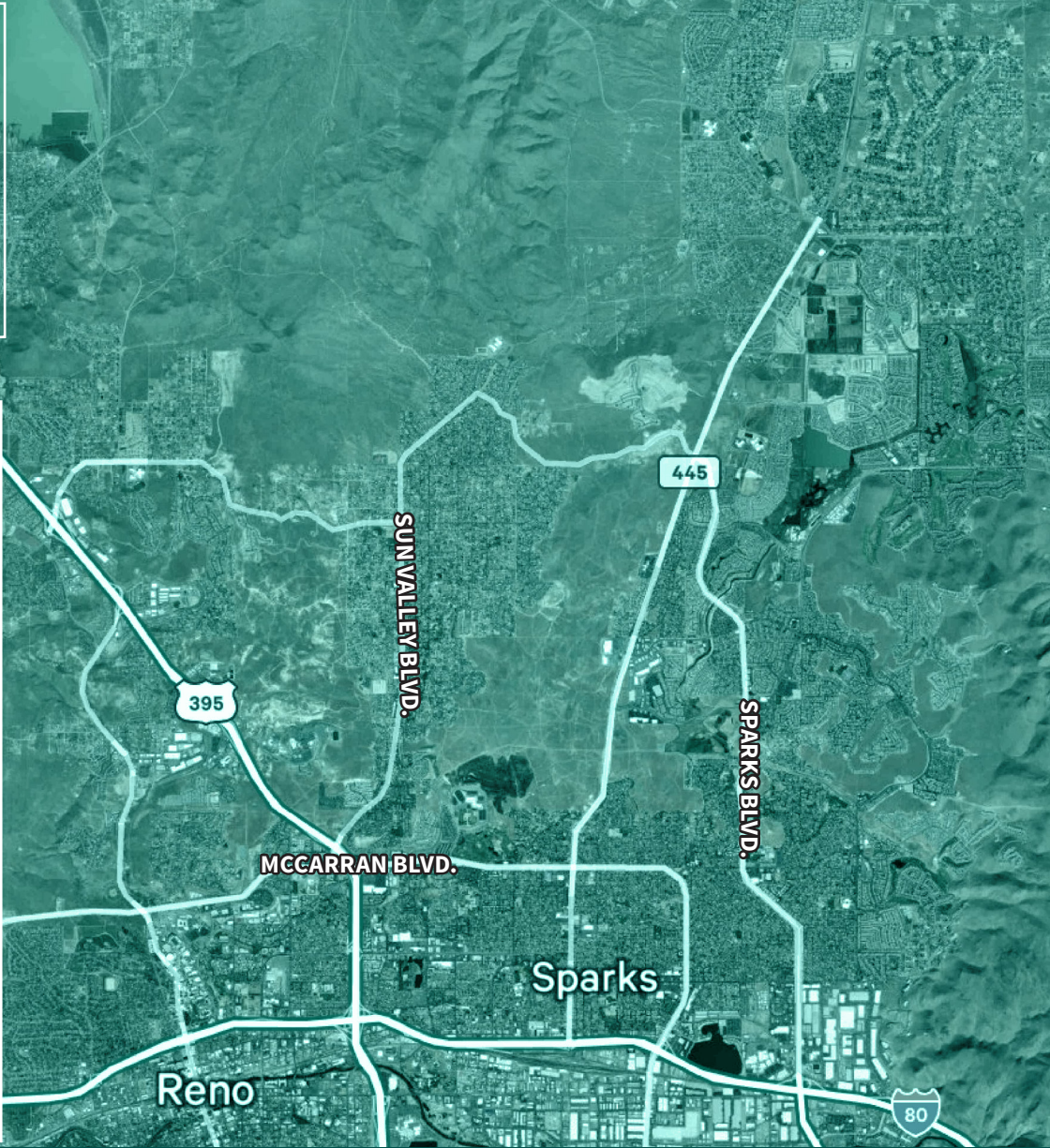


19,320 Total Pallet Positions

7'-0" Aisle (Typical)

New and Used Racking Available





Corporate Neighbors



12.1 miles to
Reno-Tahoe International



~11.5 miles to US
395/580 and I-80
Interchange



11 miles to
Downtown Reno

- | | |
|-----------------------|------------------------|
| 1 Urban Outfitters | 8 Sherwin-Williams |
| 2 Petco | 9 Volvo |
| 3 Sally Beauty Supply | 10 Makita |
| 4 JCPenney | 11 Reno Stead Airport |
| 5 Fosdick | 12 Company Name |
| 6 Uline | 13 General Motors |
| 7 HUB | 14 Hidden Valley Ranch |



CBRE – Reno

7900 Rancharrah Pkwy.
Suite 200
Reno, NV 89511

Daniel Buhrmann

Executive Vice President
Lic. S.0053815
+1 775 690 5653
daniel.buhrmann@cbre.com



Prologis – Reno

5520 Kietzke Ln.
Suite 230
Reno, NV 89511

Prologis Headquarters

Pier 1, Bay 1
San Francisco, CA 94111
Main: +1 415 394 4000
info@prologis.com

www.prologis.com
NYSE: PLD
Twitter: @Prologis

Christina Rangel

Senior Leasing Manager
+1 775 829 3012
cwilliams@prologis.com

Lisa Brady

VP-Market Officer
+1 702 217 5460
lbrady@prologis.com

Prologis is the global leader in logistics real estate with approximately XXX billion square feet owned and under management in 19 countries on four continents.

Data as of May 13, 2025, for assets the company owned or had investments in, on a wholly owned basis or through co-investment ventures, properties and development projects.

© 2025 CBRE, Inc. All rights reserved. This information has been obtained from sources believed reliable but has not been verified for accuracy or completeness. CBRE, Inc. makes no guarantee, representation or warranty and accepts no responsibility or liability as to the accuracy, completeness, or reliability of the information contained herein. You should conduct a careful, independent investigation of the property and verify all information. Any reliance on this information is solely at your own risk. CBRE and the CBRE logo are service marks of CBRE, Inc. All other marks displayed on this document are the property of their respective owners, and the use of such marks does not imply any affiliation with or endorsement of CBRE. Photos herein are the property of their respective owners. Use of these images without the express written consent of the owner is prohibited

