



**FOR SUBLEASE**  
Industrial/Flex Space

# 15690 Parkerhouse Rd., Unit 4

Parker, CO 80134

## BUILDING INFORMATION

<b>Available Space:</b>	12,600 SF	<b>Sprinkler:</b>	ESFR	<b>YOC:</b>	2008
<b>Office:</b>	3,496 SF (includes 1,745 SF on 2nd floor)	<b>Parking:</b>	3.75:1,000 SF	<b>Sublease Term Expires:</b>	8/31/2029
<b>Rate:</b>	\$11.95/SF NNN	<b>Loading:</b>	Two (2) Drive-Ins (12' x 14')	<b>Building Size:</b>	44,700 SF
<b>NNN:</b>	\$9.29 (2024)	<b>Clear Height:</b>	22'		

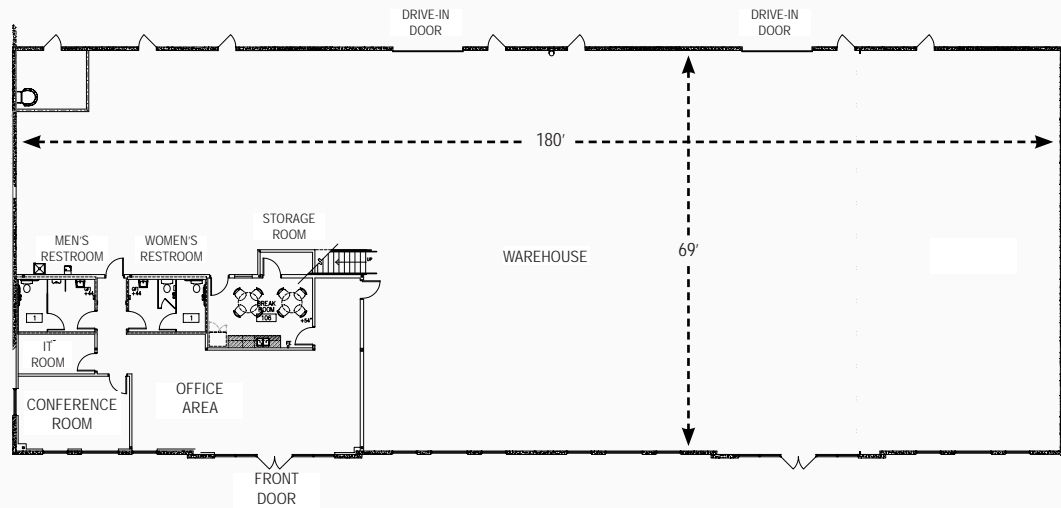
## HIGHLIGHTS

- Located at the NW Corner of E-470 and Jordan Rd.
- 200 Amps, 277/480 Volts, 3-Phase Power
- High Image Building with Highway Frontage

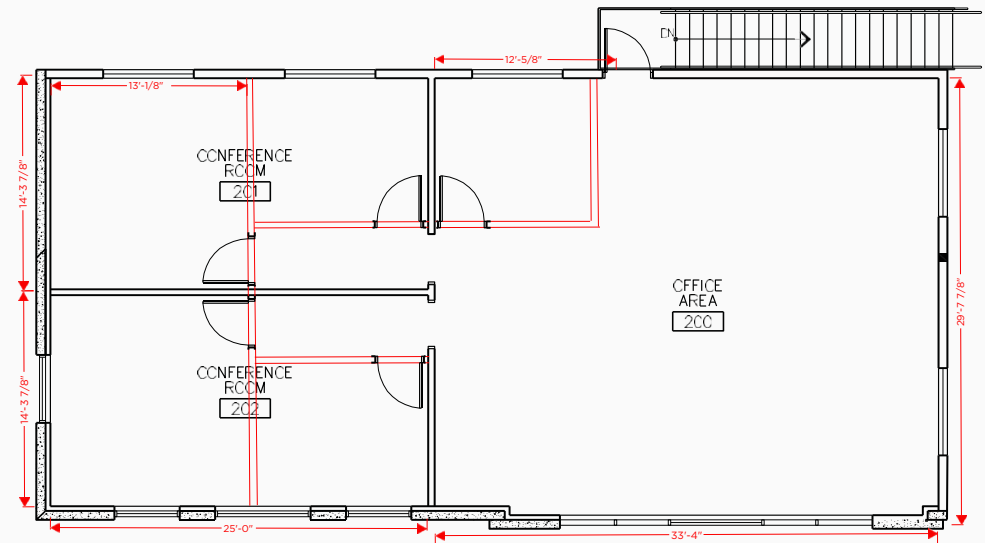
# 15690 PARKERHOUSE RD.



## First Floor



## Second Floor



©2025 Cushman & Wakefield. All rights reserved. The information contained in this communication is strictly confidential. This information has been obtained from sources believed to be reliable but has not been verified. NO WARRANTY OR REPRESENTATION, EXPRESS OR IMPLIED, IS MADE AS TO THE CONDITION OF THE PROPERTY (OR PROPERTIES) REFERENCED HEREIN OR AS TO THE ACCURACY OR COMPLETENESS OF THE INFORMATION CONTAINED HEREIN, AND SAME IS SUBMITTED SUBJECT TO ERRORS, OMISSIONS, CHANGE OF PRICE, RENTAL OR OTHER CONDITIONS, WITHDRAWAL WITHOUT NOTICE, AND TO ANY SPECIAL LISTING CONDITIONS IMPOSED BY THE PROPERTY OWNER(S). ANY PROJECTIONS, OPINIONS OR ESTIMATES ARE SUBJECT TO UNCERTAINTY AND DO NOT SIGNIFY CURRENT OR FUTURE PROPERTY PERFORMANCE.