



**6,000 SF - 125,000 SF
Industrial, Office & IOS Space
Available for Lease**

For more information, contact:

Alex Irwin
Senior Vice President
+1 843 637 5013
alex.irwin@avisonyoung.com

Don Lewis
Associate
+1 901 626 7943
don.lewis@avisonyoung.com

Gray Wilson
Associate
+1 803 608 5688
gray.wilson@avisonyoung.com

Location



East Coast Industrial Park is located just east of the center of Conway on Route 501 Corridor.



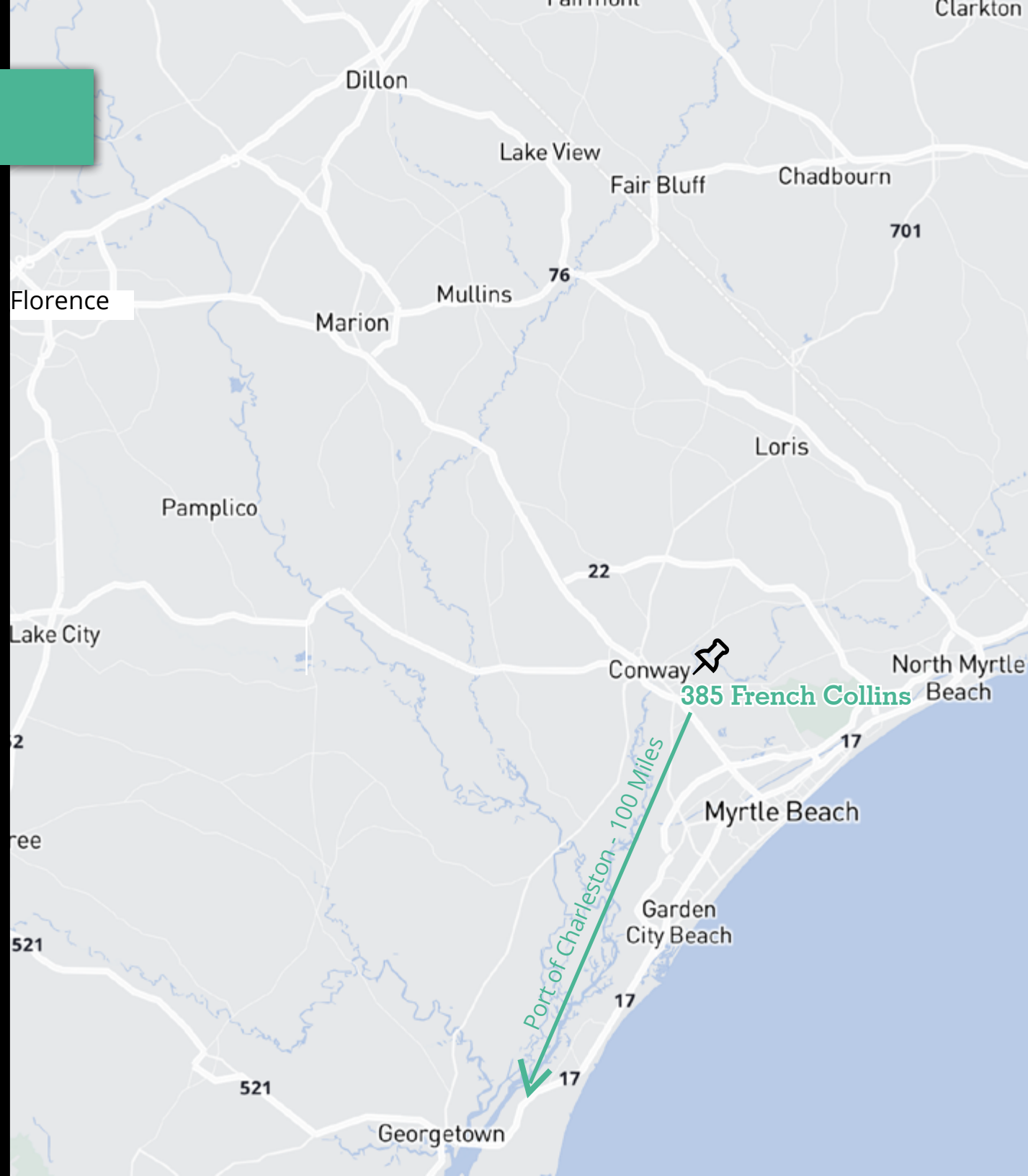
Site offers access to some of the Southeast's most prominent markets.



Charlotte-Savannah-Sumter-Florence-Beaufort-Fayetteville-Spartanburg-Augusta-Anderson-Raleigh-Columbia and more, all within a 300 mile driving distance.



A sustainable option for companies looking to service large consumer markets, while mitigating operations costs and maintaining a one day service radius.



Building A | SPECIFICATIONS

Building Dimensions 450' x 690' (approx.)

Total SF 309,220 SF

Available SF 12,000 sf - 125,000 SF

Loading Docks +16

Drive in Bays 1 (20'w x 14'h)

Center Height 30'

Clearance Height 22' - 29'

Eave Height 25'

Column Spacing 30' x 50'

Roof/ Walls/ Siding Insulated Metal

Lighting Metal Hallide & Sky Lights

Power Phase 3 Phase

Sprinklers Wet & Dry System

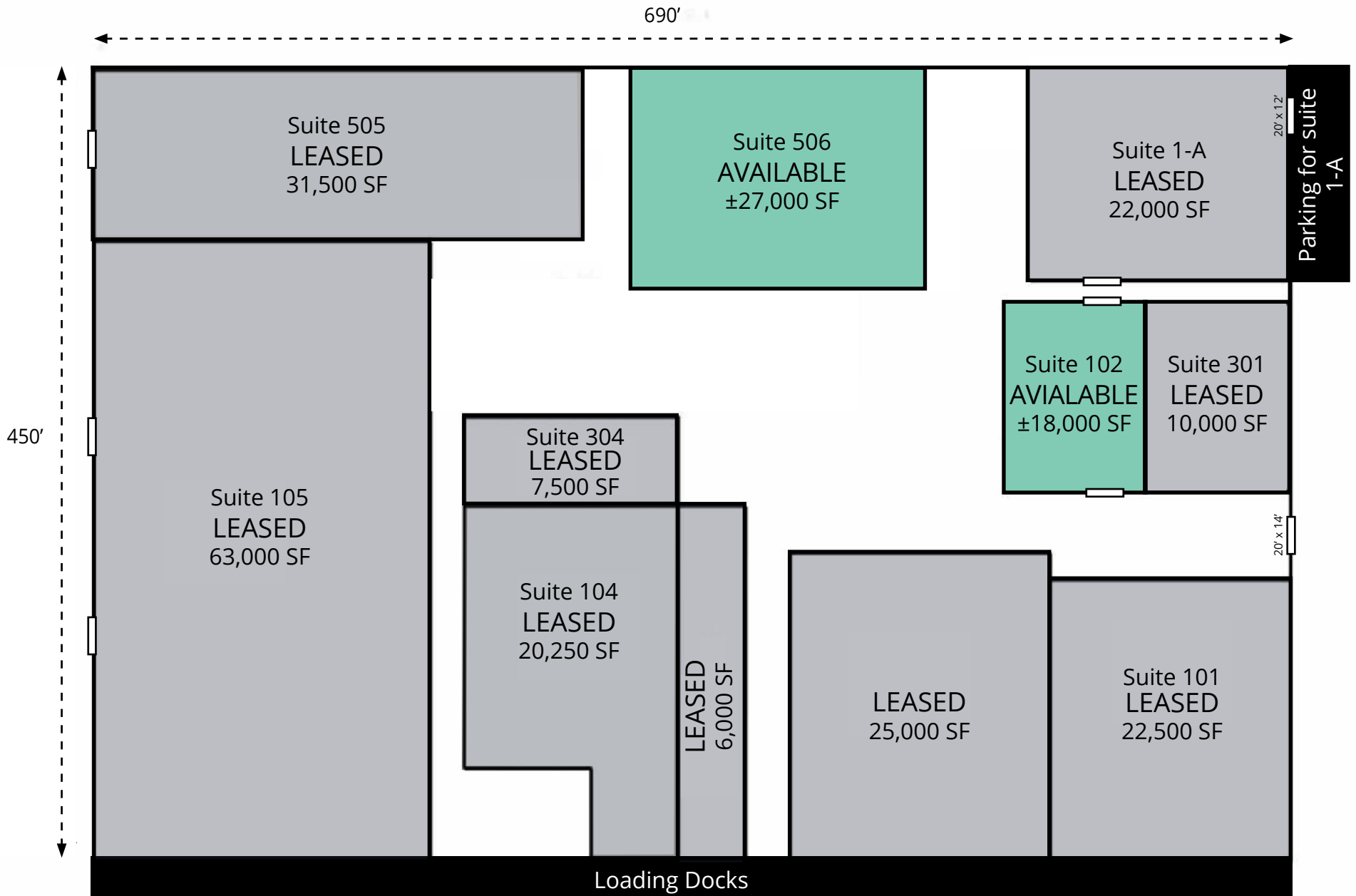
Parking Spaces +120

Trailer Parking Available

Lease Rate \$8.00 SF/yr



Building A | FLOOR PLAN



Building C | SPECIFICATIONS

Building Dimensions	150' x 150'
Available SF	11,250 SF
Drive in Bays	1 (20' x 14')
Clearance Height	26'
Column Spacing	30' x 50'
Parking Spaces	10
Lease Rate	\$8.00 SF/yr



Industrial Outdoor Storage For Lease

Available Space ±0.7 Acres

Date Available Immediate

Lease Rate \$6,000/month



Building D | SPECIFICATIONS

Space Type Office

Available SF 5,670 SF

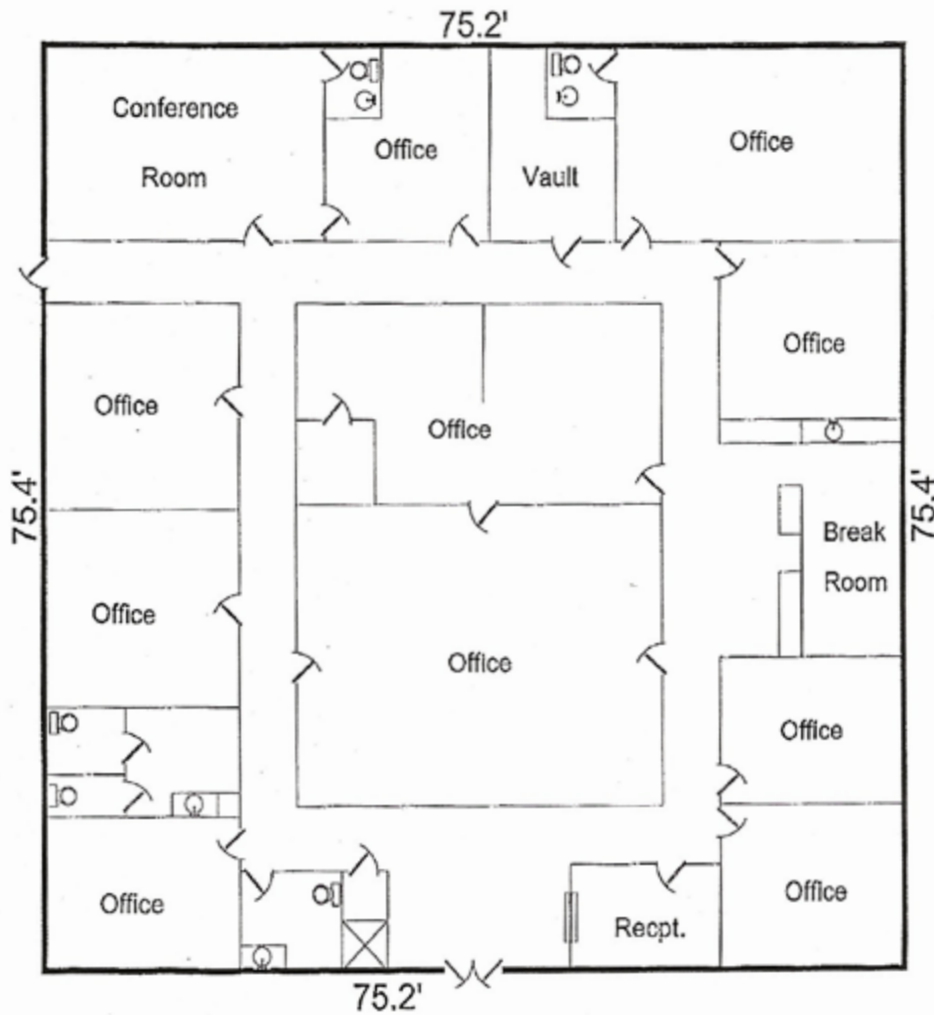
Parking spaces 21

Date Available Immediate

Lease Rate \$12.00 sf/yr NNN



Building D





East Coast Industrial Park

385 FRENCH COLLINS ROAD | CONWAY, SC 29526



For more information, contact:

Alex Irwin
Senior Vice President
+1 843 637 5013
alex.irwin@avisonyoung.com

Don Lewis
Associate
+1 901 626 7948
don.lewis@avisonyoung.com

Gray Wilson
Associate
+1 803 608 5688
gray.wilson@avisonyoung.com