

FOR SALE

6,600 Sq. Ft. ±



1928 Thomson Dr. Lynchburg, VA

Property Information

SF

6,600 ±

Acreage

.466 Acres

Price

\$515,000

Age

1972 (Remodeled in 2008)

HVAC

6 heat pumps/wall units in upper level

Parking

Paved & marked for 22 spaces

Zoning

B-1

Luke Dykeman

Cell: 434-944-3920

Main: 434-455-2285 ext. 107

lukedykeman@realestatelynchburg.com

Property Features

This property features recently renovated office space located on the North side of Thomson Dr. just past the Lynchburg General Hospital and near the Alan Pearson Cancer Center. 1,300 Sq. Ft. is available on the 2nd floor, 3,252 Sq. Ft. is available on the 1st & 2nd floors, & 2,050 Sq. Ft. is available on the lower level. The recently renovated lower level interior includes: Painted drywall, 2' x 4' acoustic lay-in or hard ceilings, fluorescent lighting & laminate hardwood flooring, fire alarm system, Radionics control panel/ monitor security system.

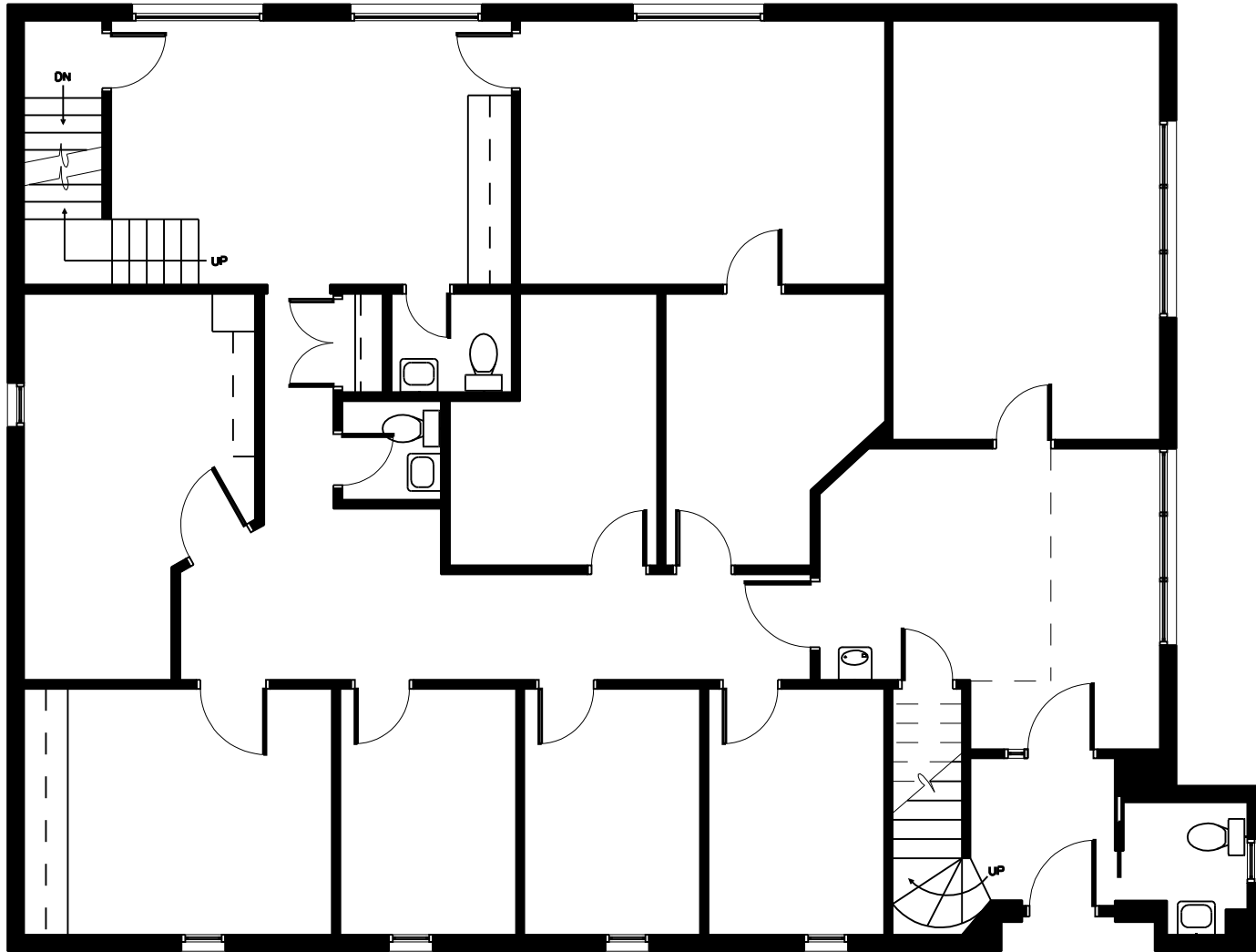
Ricky Read, CCIM

Cell: 434-841-3659

Main: 434-455-2285 ext. 101

ricky@realestatelynchburg.com

WWW.CBCREAD.COM



1
A1.2

**EXISTING
 MAIN FLOOR PLAN**
 1/8" = 1'-0" 2,344 S.F.



1000 Jefferson Street
 Suite 2A
 Lynchburg, Virginia 24504
 434.528.4500 ext
 434.528.4756 fax

+

BILL YOUNG
 1928 THOMSON DRIVE
 LYNCHBURG, VIRGINIA

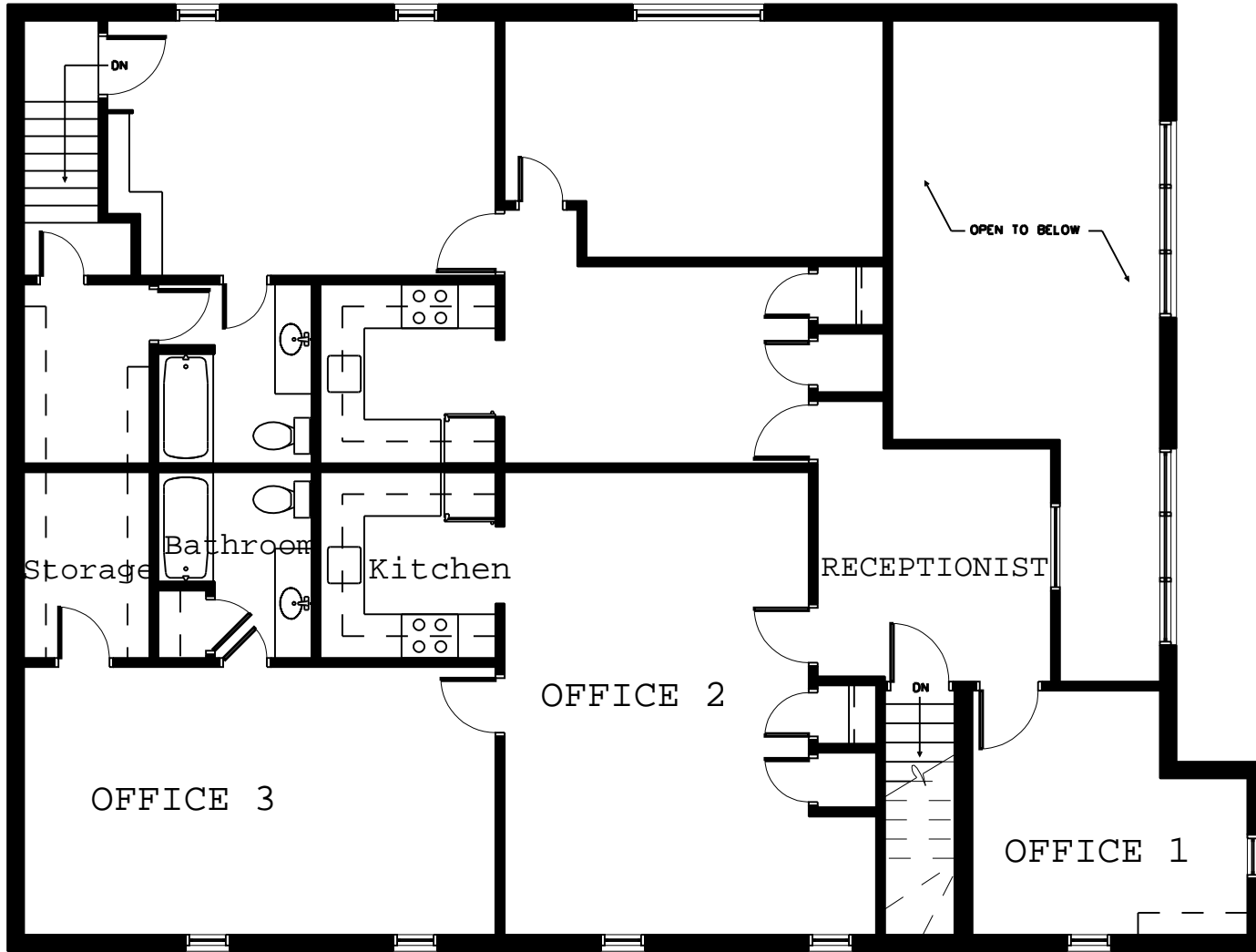
© Dominion Seven Architects, P.C.
 All rights reserved. No part of this document may be reproduced without written consent of Dominion Seven Architects, P.C.

PROJECT NUMBER:
2825
 ISSUE DATE:
SEPTEMBER 2008

SHEET TITLE:
**EXISTING GROUND
 MAIN PLAN**

SHEET NUMBER:

A1.2



1000 Jefferson Street
 Suite 2A
 Lynchburg, Virginia 24504
 434.528.4500 ext
 434.528.4756 fax

BILL YOUNG
 1928 THOMSON DRIVE
 LYNCHBURG, VIRGINIA

© Dominion Seven Architects, P.C.
 All rights reserved. No part of this document may be reproduced without written permission.

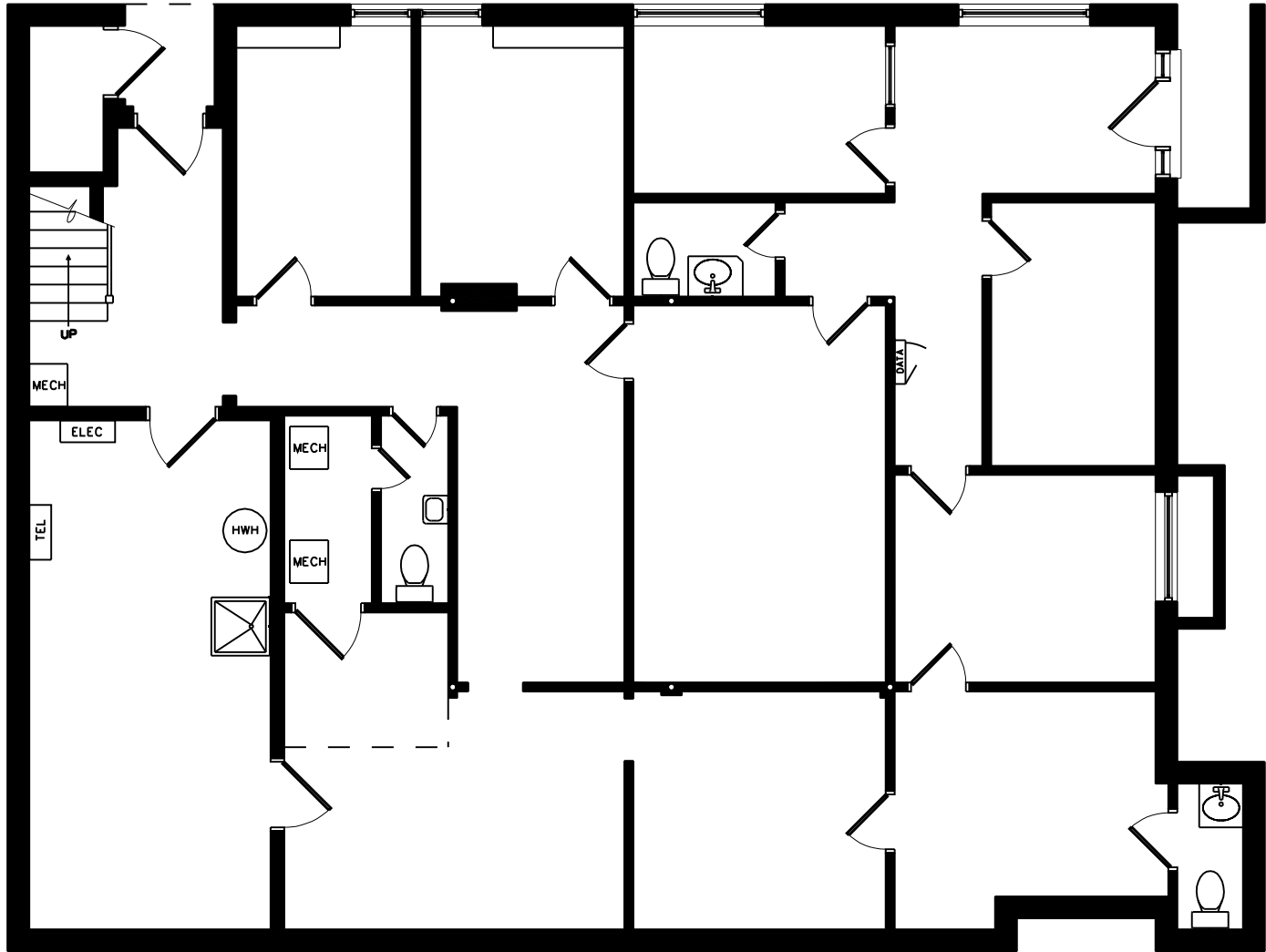
PROJECT NUMBER:
2825
 ISSUE DATE:
SEPTEMBER 2008

SHEET TITLE:
**EXISTING GROUND
 UPPER FLOOR PLAN**

SHEET NUMBER:

A1.3

**EXISTING
 UPPER FLOOR PLAN**
 1
 A1.3 1/8" = 1'-0" 2,353 S.F.



1
A1.1

**EXISTING
GROUND FLOOR PLAN**
 1/8" = 1'-0" 2,344 S.F.



1000 Jefferson Street
 Suite 2A
 Lynchburg, Virginia 24504
 434.528.4500 ext
 434.528.4756 fax

+

BILL YOUNG
 1928 THOMSON DRIVE
 LYNCHBURG, VIRGINIA

© Dominion Seven Architects, P.C.
 All rights reserved. No part of this document may be reproduced without written consent of Dominion Seven Architects, P.C.

PROJECT NUMBER:
2825
 ISSUE DATE:
SEPTEMBER 2008

SHEET TITLE:
**EXISTING GROUND
FLOOR PLAN**

SHEET NUMBER

A1.1