

FOR LEASE BRENTWOOD SQUARE

OFFICE & MEDICAL SPACE
AVAILABLE IN THE HEART OF
BRENTWOOD

11661 SAN VICENTE BLVD
LOS ANGELES, CA 90049



ERIC SACKLER | CALDRE #01057377

📍 11661 SAN VICENTE BLVD., 10TH FL STE 1001, LA, CA 90049

📞 310.979.4990 ✉ ERICSACKLER@GMAIL.COM

SUSAN LAU | CALDRE #01516710

📍 11661 SAN VICENTE BLVD., 10TH FL STE 1001, LA, CA 90049

📞 213.220.5466 ✉ SUSANLAU@GMAIL.COM

The property information herein is derived from various sources that may include, but not be limited to, county records and the Multiple Listing Service, and it may include approximations. Although the information is believed to be accurate, it is not warranted and you should not rely upon it without personal verification. Real estate agents affiliated with Coldwell Banker Realty are independent contractor sales associates, not employees. ©2021 Coldwell Banker. All Rights Reserved. Coldwell Banker and the Coldwell Banker logos are trademarks of Coldwell Banker Real Estate LLC. The Coldwell Banker® System is comprised of company owned offices which are owned by a subsidiary of Realogy Brokerage Group LLC and franchised offices which are independently owned and operated. The Coldwell Banker System fully supports the principles of the Fair Housing Act and the Equal Opportunity Act.



ERIC SACKLER | CALDRE #01057377
 ☎ 310 979 4990 ✉ ERICSACKLER@GMAIL.COM

SUSAN LAU | CALDRE #01516710
 ☎ 213.220.5466 ✉ SUSANLAU@GMAIL.COM

The property information herein is derived from various sources that may include, but not be limited to, county records and the Multiple Listing Service, and it may include approximations. Although the information is believed to be accurate, it is not warranted and you should not rely upon it without personal verification. Real estate agents affiliated with Coldwell Banker Realty are independent contractor sales associates, not employees. ©2021 Coldwell Banker. All Rights Reserved. Coldwell Banker and the Coldwell Banker logos are trademarks of Coldwell Banker Real Estate LLC. The Coldwell Banker® System is comprised of company owned offices which are owned by a subsidiary of Realty Brokerage Group LLC and franchised offices which are independently owned and operated. The Coldwell Banker System fully supports the principles of the Fair Housing Act and the Equal Opportunity Act.

11661 SAN VICENTE BOULEVARD SUITE AVAILABILITY

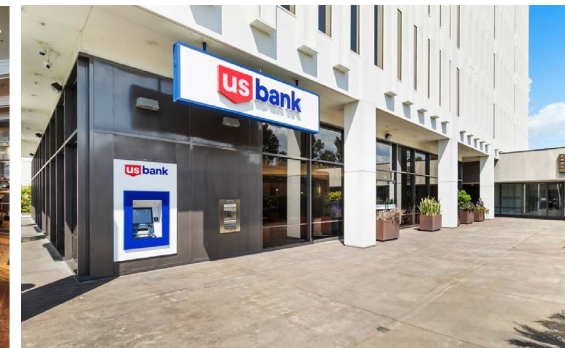
SUITE	VIEW	RSF	RATE	NOTES
104	Ground Floor	1,686	Negotiable/FSG	Medical
204	NW	656	Negotiable/FSG	
210	NE	1,492	Negotiable/FSG	
215	SW	2,382	Negotiable/FSG	
220	NE	1,635	Negotiable/FSG	
303	S	1,329	Negotiable/FSG	
305	SE	1,245	Negotiable/FSG	
404	W	1,792	Negotiable/FSG	
702	SW	778	Negotiable/FSG	
830	SW	1,132	Negotiable/FSG	
910	SW	4,924	Negotiable/FSG	Divisible

BUILDING FEATURES

- Café
- Convenience store
- 24-hour security
- View suites
- Retail tenants include US Bank, Baltaire Restaurant & Orangetheory
- Building has earned ENERGY STAR® certification from the EPA.

LOCATION FEATURES

- 1/2 block from Barrington Avenue
- Near Brentwood's most popular shops & restaurants
- Convenient access to 405 freeway
- Easy access to many residential neighborhoods



ERIC SACKLER | CALDRE #01057377
 ☎ 310 979 4990 ✉ ERICSACKLER@GMAIL.COM

SUSAN LAU | CALDRE #01516710
 ☎ 213.220.5466 ✉ SUSANLAU@GMAIL.COM

The property information herein is derived from various sources that may include, but not be limited to, county records and the Multiple Listing Service, and it may include approximations. Although the information is believed to be accurate, it is not warranted and you should not rely upon it without personal verification. Real estate agents affiliated with Coldwell Banker Realty are independent contractor sales associates, not employees. ©2021 Coldwell Banker. All Rights Reserved. Coldwell Banker and the Coldwell Banker logos are trademarks of Coldwell Banker Real Estate LLC. The Coldwell Banker® System is comprised of company owned offices which are owned by a subsidiary of Realty Brokerage Group LLC and franchised offices which are independently owned and operated. The Coldwell Banker System fully supports the principles of the Fair Housing Act and the Equal Opportunity Act.

FLOOR PLAN 104: MEDICAL - DIVISIBLE

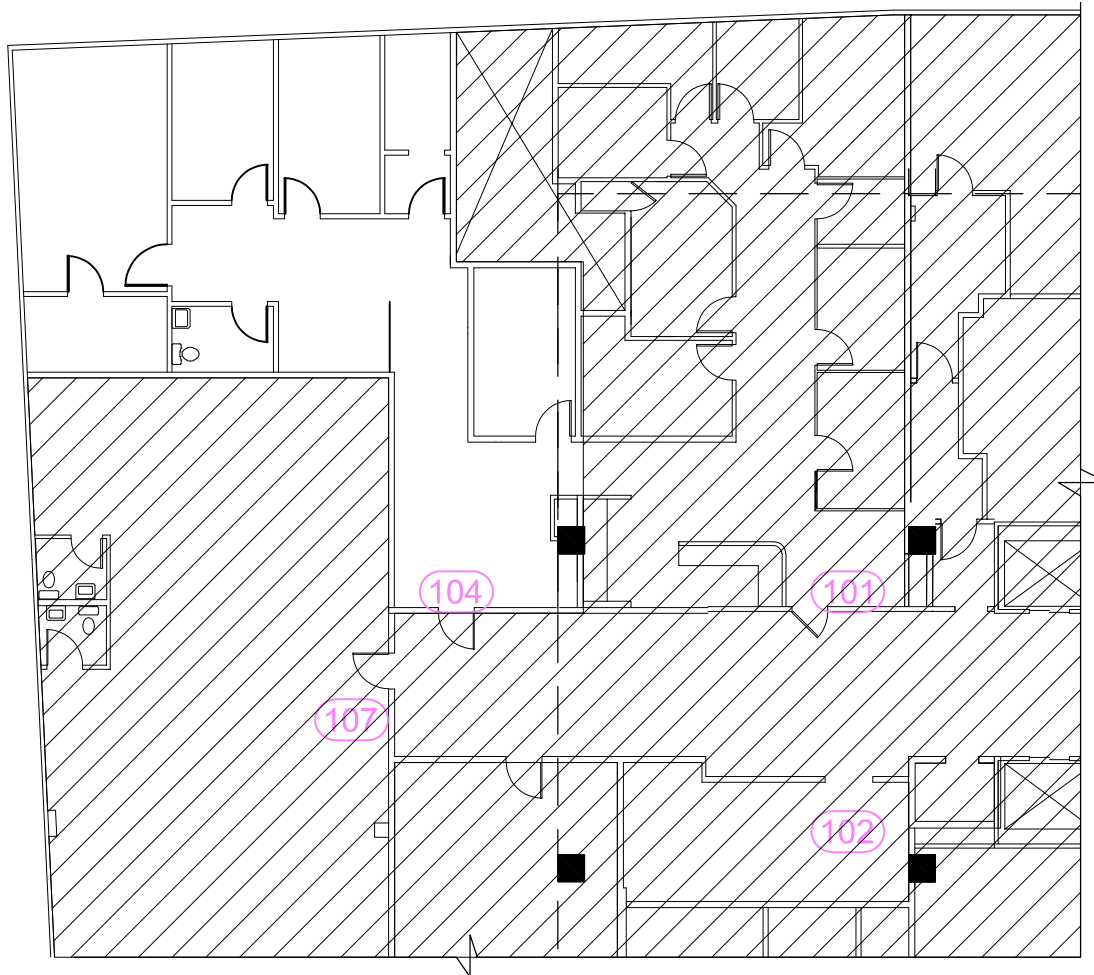


11661 San Vicente Blvd - Suite 101 & 104

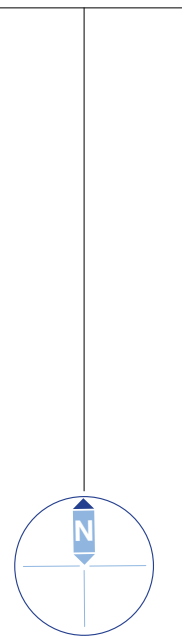
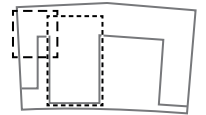
Negotiable /FSG

TOTAL USABLE
Sq Ft
1,429

TOTAL RENTABLE
Sq Ft
1,686



UNIT LOCATION >>>



*FLOOR PLAN CAN BE MODIFIED



ERIC SACKLER | CALDRE #01057377
📞 310 979 4990 ✉ ERICSACKLER@GMAIL.COM

SUSAN LAU | CALDRE #01516710
📞 213.220.5466 ✉ SUSANLAU@GMAIL.COM

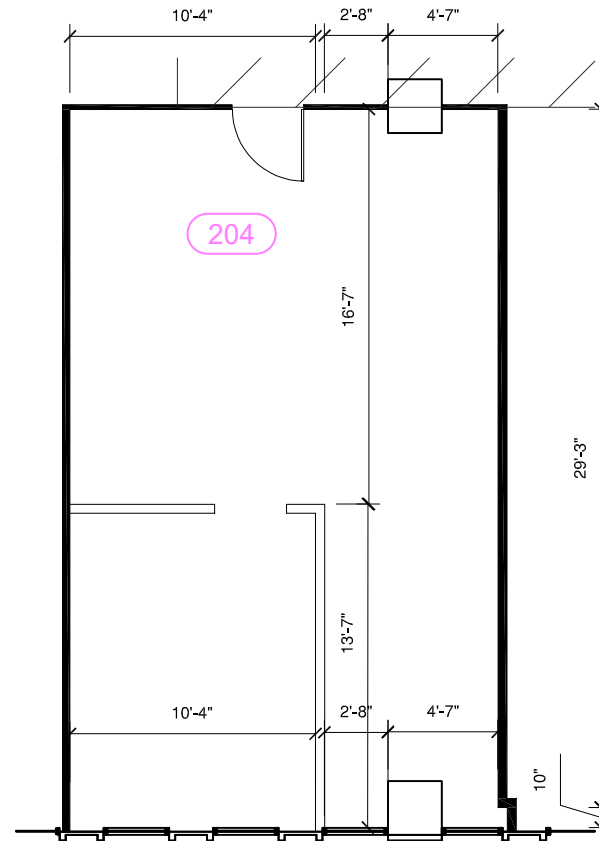
The property information herein is derived from various sources that may include, but not be limited to, county records and the Multiple Listing Service, and it may include approximations. Although the information is believed to be accurate, it is not warranted and you should not rely upon it without personal verification. Real estate agents affiliated with Coldwell Banker Realty are independent contractor sales associates, not employees. ©2021 Coldwell Banker. All Rights Reserved. Coldwell Banker and the Coldwell Banker logos are trademarks of Coldwell Banker Real Estate LLC. The Coldwell Banker® System is comprised of company owned offices which are owned by a subsidiary of Realty Brokerage Group LLC and franchised offices which are independently owned and operated. The Coldwell Banker System fully supports the principles of the Fair Housing Act and the Equal Opportunity Act.

FLOOR PLAN 204:

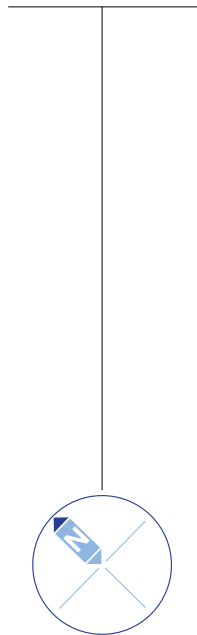
Negotiable /FSG

TOTAL USABLE
Sq Ft
556

TOTAL RENTABLE
Sq Ft
656



UNIT LOCATION >>>



*FLOOR PLAN CAN BE MODIFIED



ERIC SACKLER | CALDRE #01057377
☎ 310 979 4990 ✉ ERICSACKLER@GMAIL.COM

SUSAN LAU | CALDRE #01516710
☎ 213.220.5466 ✉ SUSANLAU@GMAIL.COM

The property information herein is derived from various sources that may include, but not be limited to, county records and the Multiple Listing Service, and it may include approximations. Although the information is believed to be accurate, it is not warranted and you should not rely upon it without personal verification. Real estate agents affiliated with Coldwell Banker Realty are independent contractor sales associates, not employees. ©2021 Coldwell Banker. All Rights Reserved. Coldwell Banker and the Coldwell Banker logos are trademarks of Coldwell Banker Real Estate LLC. The Coldwell Banker® System is comprised of company owned offices which are owned by a subsidiary of Realty Brokerage Group LLC and franchised offices which are independently owned and operated. The Coldwell Banker System fully supports the principles of the Fair Housing Act and the Equal Opportunity Act.

FLOOR PLAN 210:

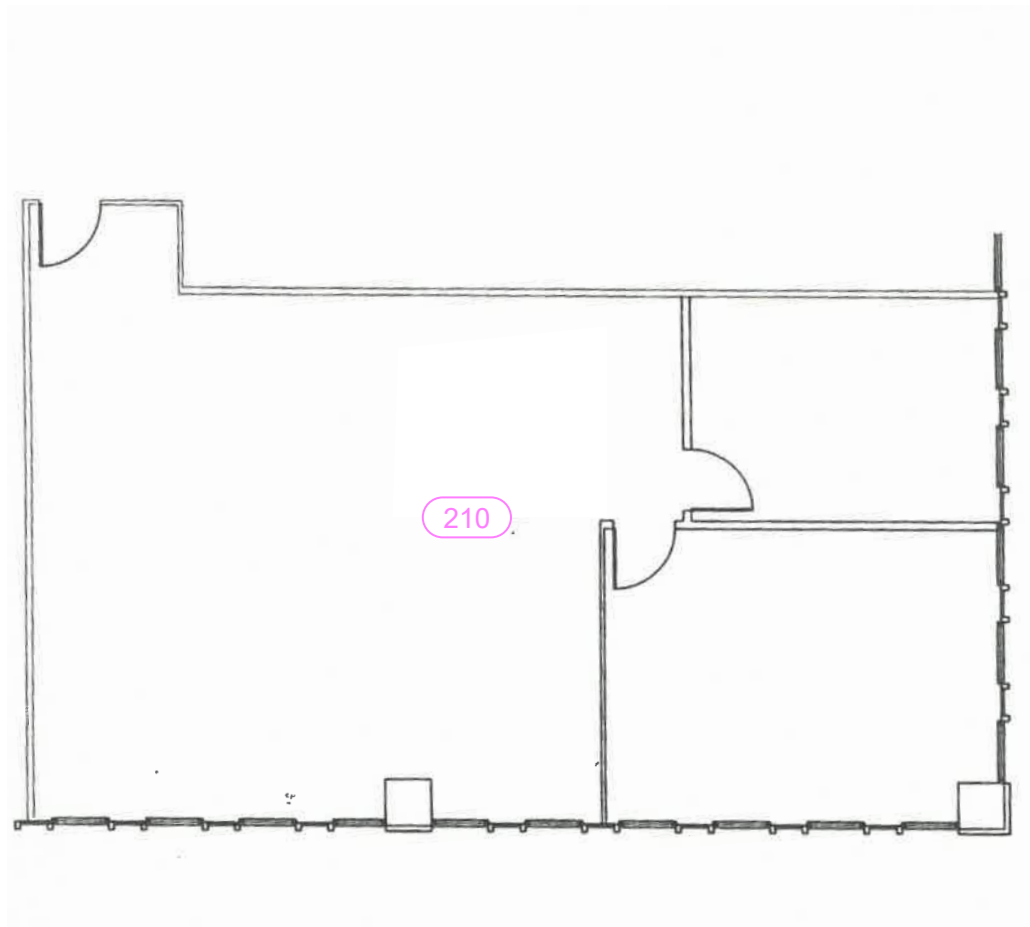


Click to View 3D Matterport

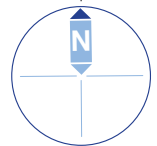
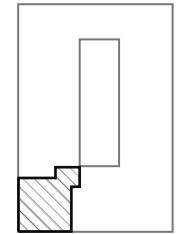
Negotiable /FSG

TOTAL USABLE
SQ FT
1,264

TOTAL RENTABLE
SQ FT
1,492



UNIT LOCATION >>>



*FLOOR PLAN CAN BE MODIFIED



ERIC SACKLER | CALDRE #01057377

📞 310 979 4990 ✉ ERICSACKLER@GMAIL.COM

SUSAN LAU | CALDRE #01516710

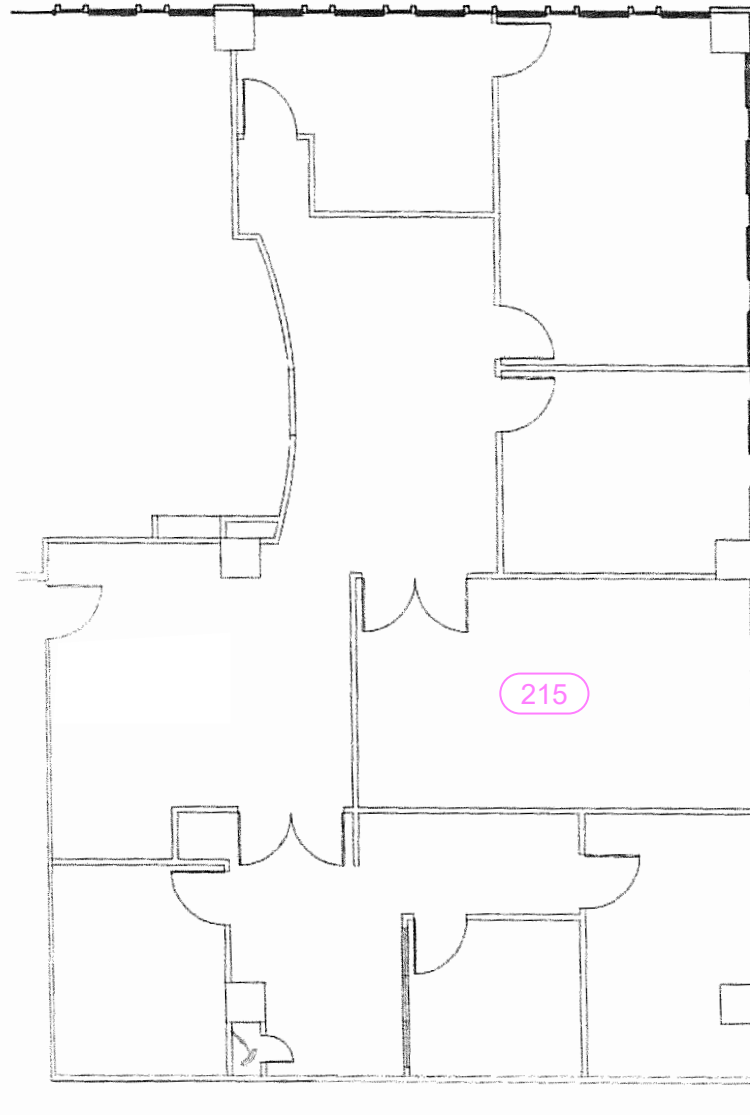
📞 213.220.5466 ✉ SUSANLAU@GMAIL.COM

The property information herein is derived from various sources that may include, but not be limited to, county records and the Multiple Listing Service, and it may include approximations. Although the information is believed to be accurate, it is not warranted and you should not rely upon it without personal verification. Real estate agents affiliated with Coldwell Banker Realty are independent contractor sales associates, not employees. ©2021 Coldwell Banker. All Rights Reserved. Coldwell Banker and the Coldwell Banker logos are trademarks of Coldwell Banker Real Estate LLC. The Coldwell Banker® System is comprised of company owned offices which are owned by a subsidiary of Realty Brokerage Group LLC and franchised offices which are independently owned and operated. The Coldwell Banker System fully supports the principles of the Fair Housing Act and the Equal Opportunity Act.

FLOOR PLAN 215:



Click to View 3D Matterport

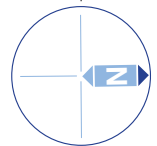
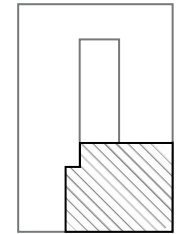


Negotiable /FSG

TOTAL USABLE
Sq Ft
2,019

TOTAL RENTABLE
Sq Ft
2,382

UNIT LOCATION >>>



*FLOOR PLAN CAN BE MODIFIED



ERIC SACKLER | CALDRE #01057377

📞 310 979 4990 ✉ ERICSACKLER@GMAIL.COM

SUSAN LAU | CALDRE #01516710

📞 213.220.5466 ✉ SUSANLAU@GMAIL.COM

The property information herein is derived from various sources that may include, but not be limited to, county records and the Multiple Listing Service, and it may include approximations. Although the information is believed to be accurate, it is not warranted and you should not rely upon it without personal verification. Real estate agents affiliated with Coldwell Banker Realty are independent contractor sales associates, not employees. ©2021 Coldwell Banker. All Rights Reserved. Coldwell Banker and the Coldwell Banker logos are trademarks of Coldwell Banker Real Estate LLC. The Coldwell Banker® System is comprised of company owned offices which are owned by a subsidiary of Realealty Brokerage Group LLC and franchised offices which are independently owned and operated. The Coldwell Banker System fully supports the principles of the Fair Housing Act and the Equal Opportunity Act.

FLOOR PLAN 220:

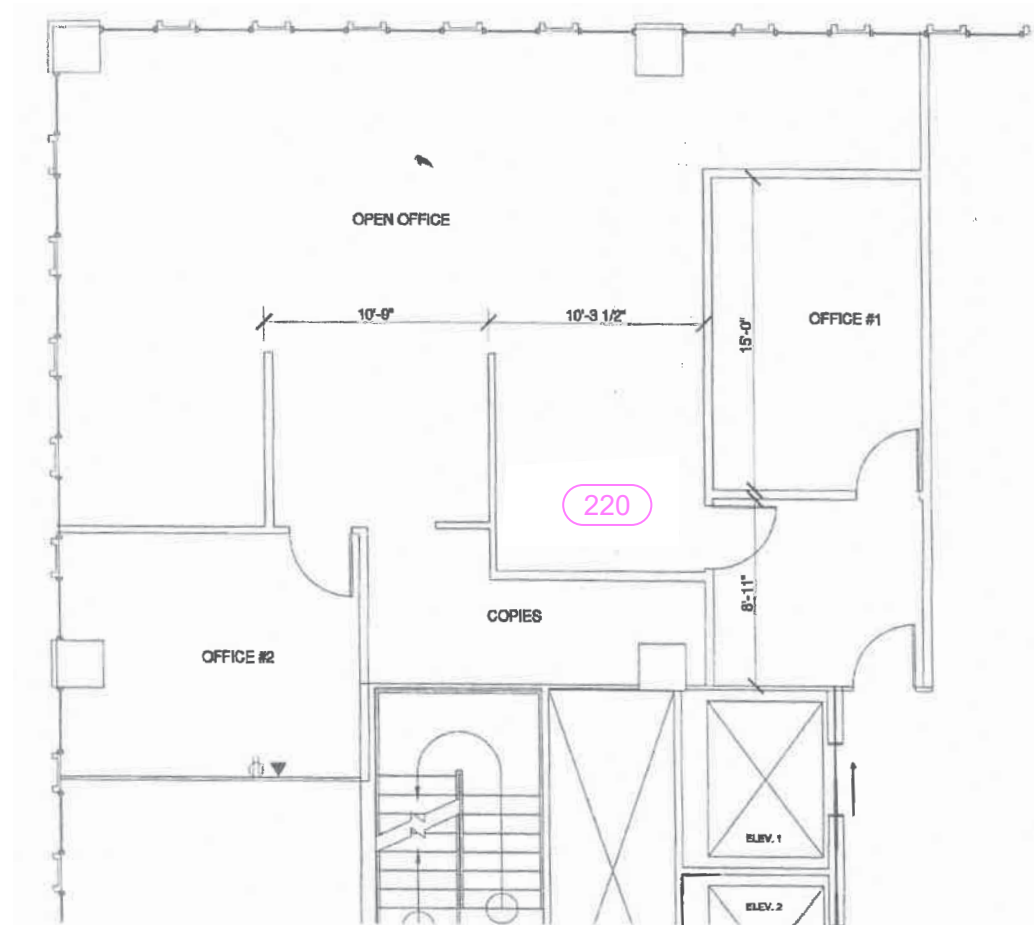


Click to View 3D Matterport

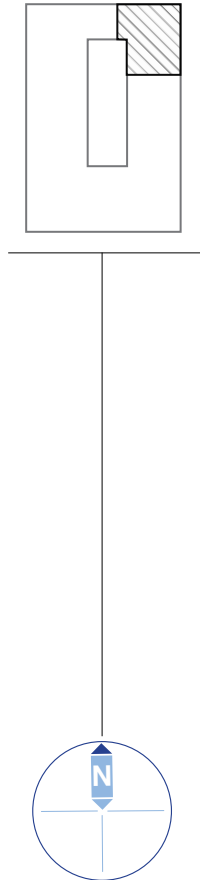
Negotiable /FSG

TOTAL USABLE
Sq Ft
1,386

TOTAL RENTABLE
Sq Ft
1,635



UNIT LOCATION >>>



*FLOOR PLAN CAN BE MODIFIED



ERIC SACKLER | CALDRE #01057377
📞 310 979 4990 ✉ ERICSACKLER@GMAIL.COM

SUSAN LAU | CALDRE #01516710
📞 213.220.5466 ✉ SUSANLAU@GMAIL.COM

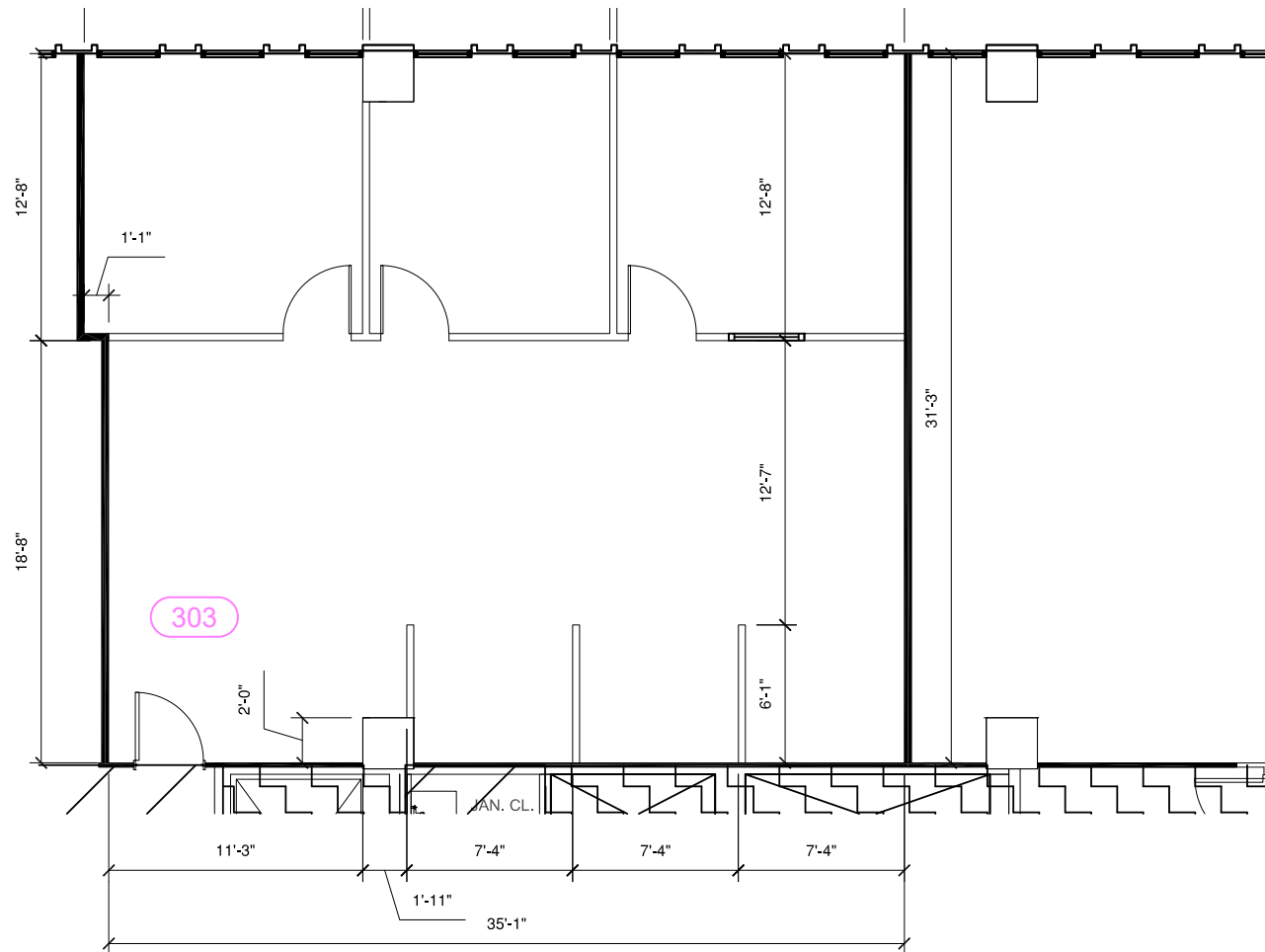
The property information herein is derived from various sources that may include, but not be limited to, county records and the Multiple Listing Service, and it may include approximations. Although the information is believed to be accurate, it is not warranted and you should not rely upon it without personal verification. Real estate agents affiliated with Coldwell Banker Realty are independent contractor sales associates, not employees. ©2021 Coldwell Banker. All Rights Reserved. Coldwell Banker and the Coldwell Banker logos are trademarks of Coldwell Banker Real Estate LLC. The Coldwell Banker® System is comprised of company owned offices which are owned by a subsidiary of Realty Brokerage Group LLC and franchised offices which are independently owned and operated. The Coldwell Banker System fully supports the principles of the Fair Housing Act and the Equal Opportunity Act.

FLOOR PLAN 303:

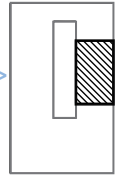
Negotiable /FSG

TOTAL USABLE
SQ FT
1,126

TOTAL RENTABLE
SQ FT
1,329



UNIT LOCATION >>>



*FLOOR PLAN CAN BE MODIFIED



ERIC SACKLER | CALDRE #01057377

 310 979 4990 ERICSACKLER@GMAIL.COM

SUSAN LAU | CALDRE #01516710

☎ 213.220.5466 ✉ SUSANLAU@GMAIL.COM

The property information herein is derived from various sources that may include, but not be limited to, county records and the Multiple Listing Service, and it may include approximations. Although the information is believed to be accurate, it is not warranted and you should not rely upon it without personal verification. Real estate agents affiliated with Coldwell Banker Realty are independent contractor sales associates, not employees. ©2021 Coldwell Banker. All Rights Reserved. Coldwell Banker and the Coldwell Banker logos are trademarks of Coldwell Banker Real Estate LLC. The Coldwell Banker® System is comprised of company owned offices which are owned by a subsidiary of Realealty Brokerage Group LLC and franchised offices which are independently owned and operated. The Coldwell Banker System fully supports the principles of the Fair Housing Act and the Equal Opportunity Act.

FLOOR PLAN 305:

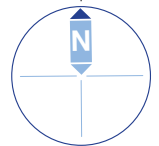
Negotiable /FSG

TOTAL USABLE
SQ FT
1,055

TOTAL RENTABLE
SQ FT
1,245



UNIT LOCATION >>>



*FLOOR PLAN CAN BE MODIFIED



ERIC SACKLER | CALDRE #01057377

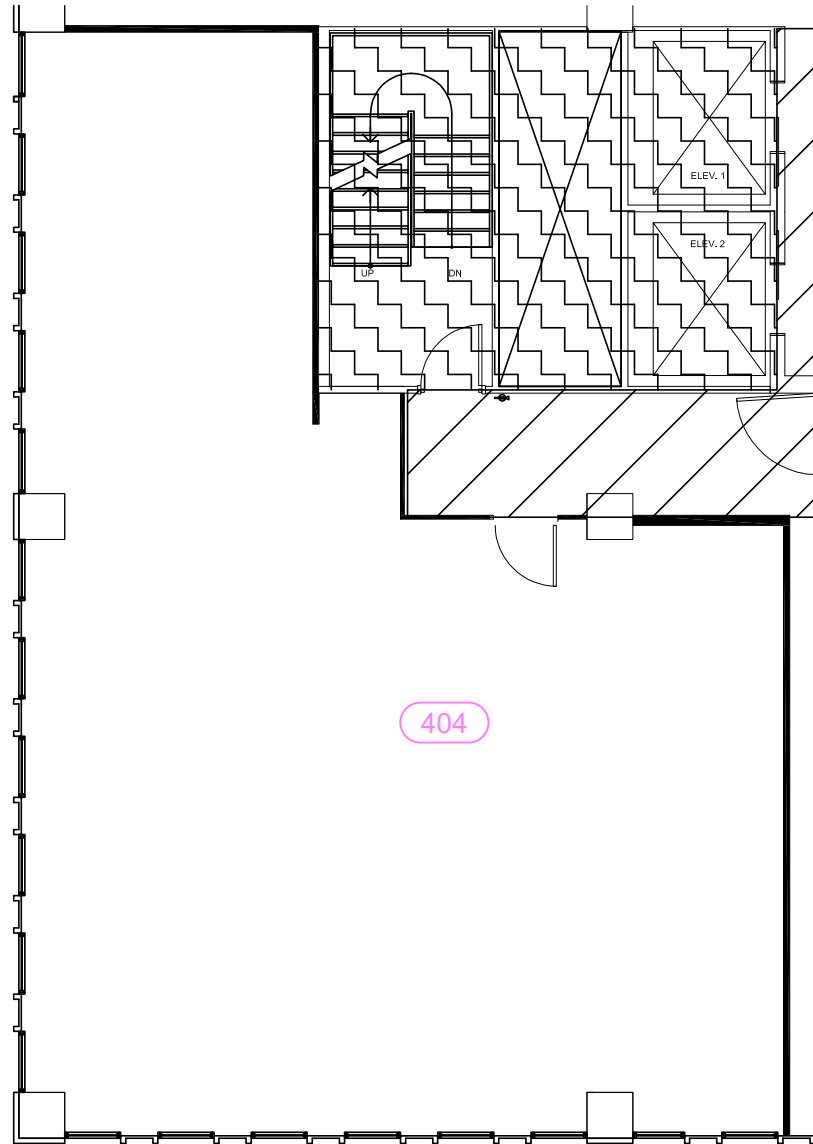
📞 310 979 4990 ✉ ERICSACKLER@GMAIL.COM

SUSAN LAU | CALDRE #01516710

📞 213.220.5466 ✉ SUSANLAU@GMAIL.COM

The property information herein is derived from various sources that may include, but not be limited to, county records and the Multiple Listing Service, and it may include approximations. Although the information is believed to be accurate, it is not warranted and you should not rely upon it without personal verification. Real estate agents affiliated with Coldwell Banker Realty are independent contractor sales associates, not employees. ©2021 Coldwell Banker. All Rights Reserved. Coldwell Banker and the Coldwell Banker logos are trademarks of Coldwell Banker Real Estate LLC. The Coldwell Banker® System is comprised of company owned offices which are owned by a subsidiary of Realty Brokerage Group LLC and franchised offices which are independently owned and operated. The Coldwell Banker System fully supports the principles of the Fair Housing Act and the Equal Opportunity Act.

FLOOR PLAN 404:

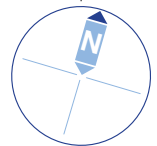
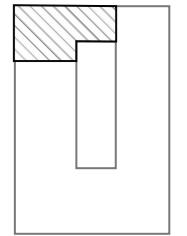


Negotiable /FSG

TOTAL USABLE
Sq Ft
1,519

TOTAL RENTABLE
Sq Ft
1,792

UNIT LOCATION >>>



*FLOOR PLAN CAN BE MODIFIED



ERIC SACKLER | CALDRE #01057377
📞 310 979 4990 ✉ ERICSACKLER@GMAIL.COM

SUSAN LAU | CALDRE #01516710
📞 213.220.5466 ✉ SUSANLAU@GMAIL.COM

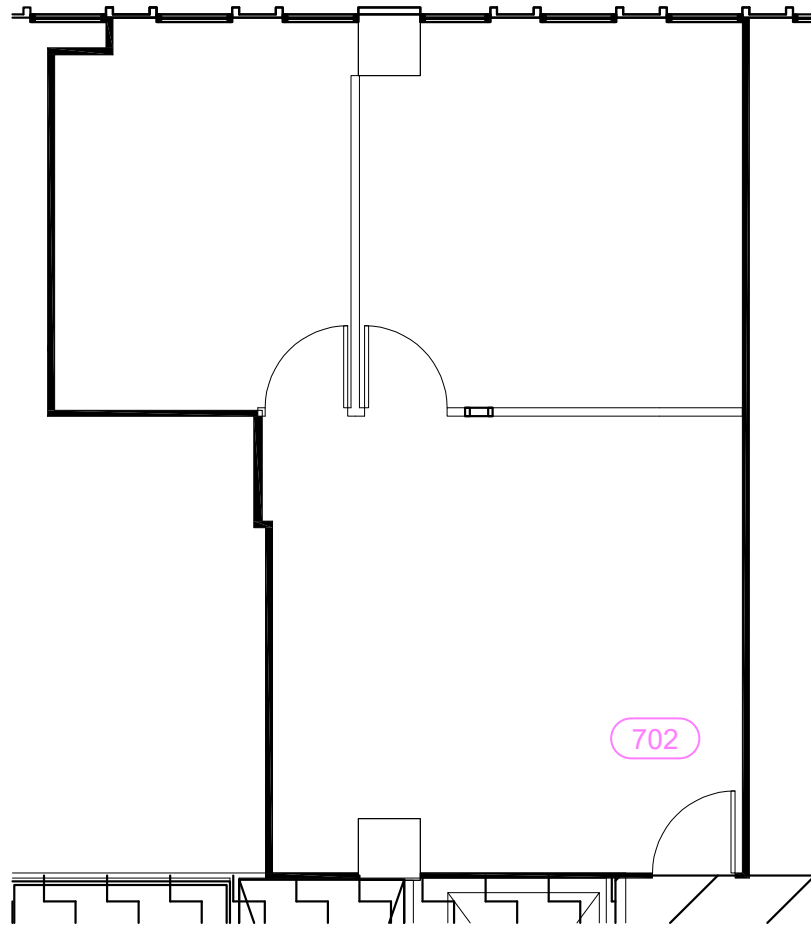
The property information herein is derived from various sources that may include, but not be limited to, county records and the Multiple Listing Service, and it may include approximations. Although the information is believed to be accurate, it is not warranted and you should not rely upon it without personal verification. Real estate agents affiliated with Coldwell Banker Realty are independent contractor sales associates, not employees. ©2021 Coldwell Banker. All Rights Reserved. Coldwell Banker and the Coldwell Banker logos are trademarks of Coldwell Banker Real Estate LLC. The Coldwell Banker® System is comprised of company owned offices which are owned by a subsidiary of Realty Brokerage Group LLC and franchised offices which are independently owned and operated. The Coldwell Banker System fully supports the principles of the Fair Housing Act and the Equal Opportunity Act.

FLOOR PLAN 702:

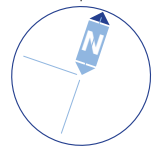
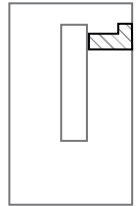
Negotiable /FSG

TOTAL USABLE
Sq Ft
659

TOTAL RENTABLE
Sq Ft
778



UNIT LOCATION >>>



*FLOOR PLAN CAN BE MODIFIED



ERIC SACKLER | CALDRE #01057377
📞 310 979 4990 ✉ ERICSACKLER@GMAIL.COM

SUSAN LAU | CALDRE #01516710
📞 213.220.5466 ✉ SUSANLAU@GMAIL.COM

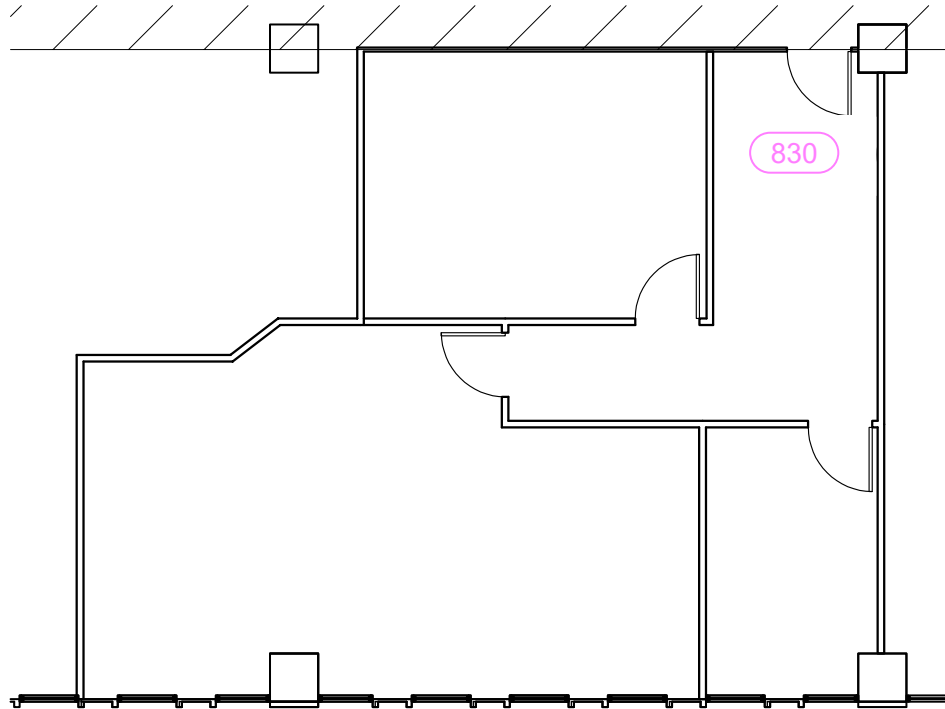
The property information herein is derived from various sources that may include, but not be limited to, county records and the Multiple Listing Service, and it may include approximations. Although the information is believed to be accurate, it is not warranted and you should not rely upon it without personal verification. Real estate agents affiliated with Coldwell Banker Realty are independent contractor sales associates, not employees. ©2021 Coldwell Banker. All Rights Reserved. Coldwell Banker and the Coldwell Banker logos are trademarks of Coldwell Banker Real Estate LLC. The Coldwell Banker® System is comprised of company owned offices which are owned by a subsidiary of Realty Brokerage Group LLC and franchised offices which are independently owned and operated. The Coldwell Banker System fully supports the principles of the Fair Housing Act and the Equal Opportunity Act.

FLOOR PLAN 830:

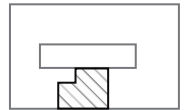
Negotiable /FSG

TOTAL USABLE
SQ FT
959

TOTAL RENTABLE
SQ FT
1,132



UNIT LOCATION >>>



*FLOOR PLAN CAN BE MODIFIED



ERIC SACKLER | CALDRE #01057377

📞 310 979 4990 ✉ ERICSACKLER@GMAIL.COM

SUSAN LAU | CALDRE #01516710

📞 213.220.5466 ✉ SUSANLAU@GMAIL.COM

The property information herein is derived from various sources that may include, but not be limited to, county records and the Multiple Listing Service, and it may include approximations. Although the information is believed to be accurate, it is not warranted and you should not rely upon it without personal verification. Real estate agents affiliated with Coldwell Banker Realty are independent contractor sales associates, not employees. ©2021 Coldwell Banker. All Rights Reserved. Coldwell Banker and the Coldwell Banker logos are trademarks of Coldwell Banker Real Estate LLC. The Coldwell Banker® System is comprised of company owned offices which are owned by a subsidiary of Realty Brokerage Group LLC and franchised offices which are independently owned and operated. The Coldwell Banker System fully supports the principles of the Fair Housing Act and the Equal Opportunity Act.

FLOOR PLAN 910:



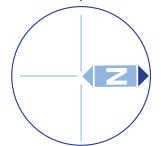
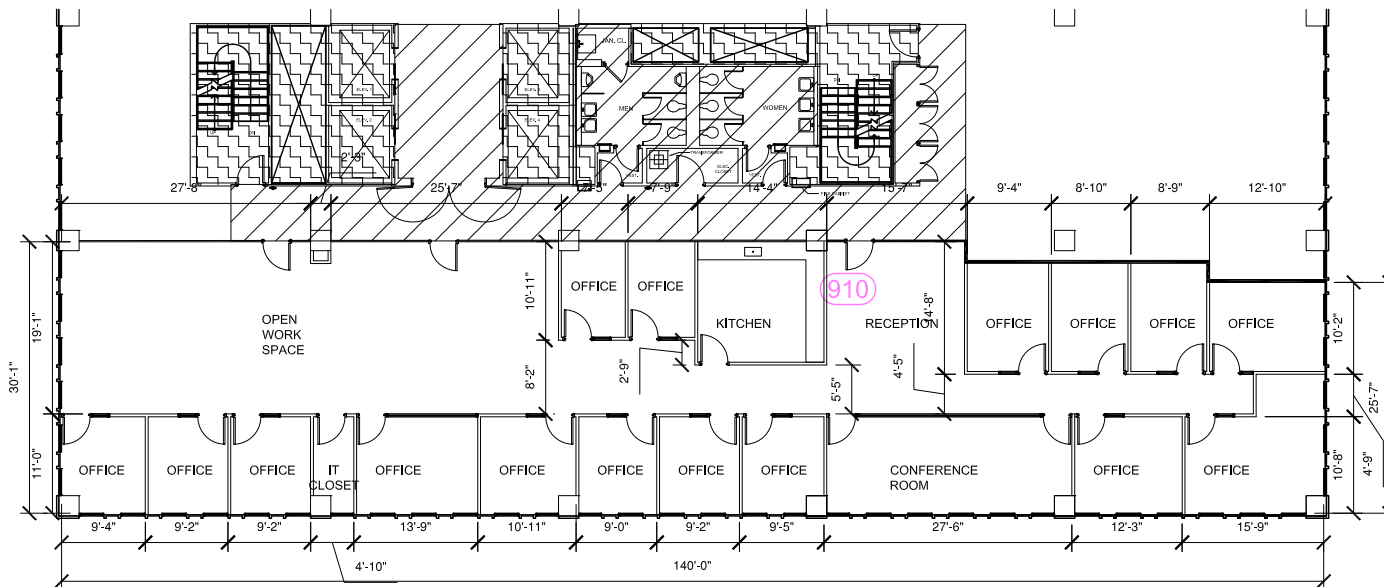
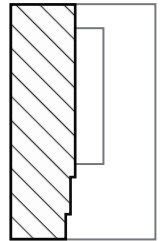
Click to View 3D Matterport of entire Suite

Negotiable /FSG

TOTAL USABLE
Sq Ft
4,173

TOTAL RENTABLE
Sq Ft
4,924

UNIT LOCATION >>>



*FLOOR PLAN CAN BE MODIFIED



ERIC SACKLER | CALDRE #01057377
📞 310 979 4990 ✉ ERICSACKLER@GMAIL.COM

SUSAN LAU | CALDRE #01516710
📞 213.220.5466 ✉ SUSANLAU@GMAIL.COM

The property information herein is derived from various sources that may include, but not be limited to, county records and the Multiple Listing Service, and it may include approximations. Although the information is believed to be accurate, it is not warranted and you should not rely upon it without personal verification. Real estate agents affiliated with Coldwell Banker Realty are independent contractor sales associates, not employees. ©2021 Coldwell Banker. All Rights Reserved. Coldwell Banker and the Coldwell Banker logos are trademarks of Coldwell Banker Real Estate LLC. The Coldwell Banker® System is comprised of company owned offices which are owned by a subsidiary of Realty Brokerage Group LLC and franchised offices which are independently owned and operated. The Coldwell Banker System fully supports the principles of the Fair Housing Act and the Equal Opportunity Act.