

# 4640

South Pulaski  
Chicago, IL

20,388 Sq. Ft. Freestanding Retail Building  
Available for Lease



**Matt Lewandowski**  
630-993-3870  
mlewandowski@darwinpw.com

**Marc Hale**  
773-714-2119  
mhale@darwinpw.com



**DARWINPW**  
R E A L T Y

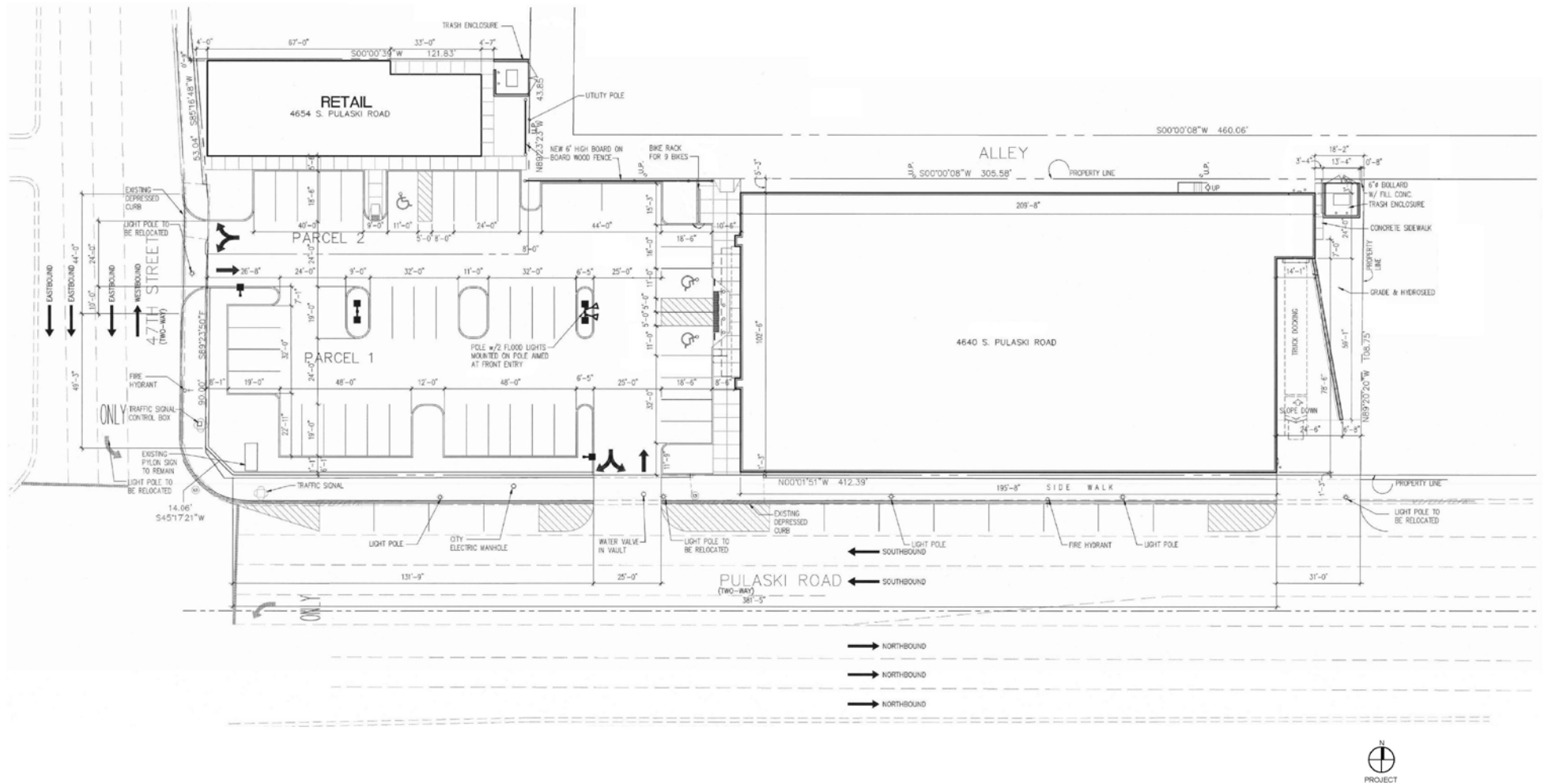
**CORFAC**  
INTERNATIONAL

970 N. Oaklawn Ave., Suite 100 | Elmhurst, IL 6.0126 • 630-782-9520 • [darwinpw.com](http://darwinpw.com)

*Submitted subject to error, change in status, or withdrawal without notice.*



# SITE PLAN



**Matt Lewandowski**  
630-993-3870  
mlewandowski@darwinpw.com

**Marc Hale**  
773-714-2119  
mhale@darwinpw.com





# RETAIL NEIGHBORS



**Matt Lewandowski**  
630-993-3870  
mlewandowski@darwinpw.com

**Marc Hale**  
773-714-2119  
mhale@darwinpw.com



970 N. Oaklawn Ave., Suite 100 | Elmhurst, IL 6.0126 • 630-782-9520 • [darwinpw.com](http://darwinpw.com)  
*Submitted subject to error, change in status, or withdrawal without notice.*



# PROPERTY SPECIFICATIONS

Address:	4640 S. Pulaski Rd Chicago, IL 60632
Building Area:	20,388 SF
Land Area:	1.02 AC
Car Parking:	43 Surface parking spots
Loading:	1 Exterior dock
Lease Rate:	Subject to Offer

## PROPERTY HIGHLIGHTS

Located on one of Chicago's busiest commercial corridors, 4640 S Pulaski Road offers excellent visibility and access in the heart of the Southwest Side. The freestanding building features strong Pulaski Road frontage, on-site parking, and convenient ingress and egress.

Surrounded by established retail, dining, and service businesses, the property benefits from steady traffic and a dense, workforce-driven customer base. Its proximity to major arterials, public transportation, and nearby expressways makes this an ideal location for retail or commercial users.



**Matt Lewandowski**  
630-993-3870  
mlewandowski@darwinpw.com

**Marc Hale**  
773-714-2119  
mhale@darwinpw.com





# PROPERTY PHOTOS



**Matt Lewandowski**  
630-993-3870  
mlewandowski@darwinpw.com

**Marc Hale**  
773-714-2119  
mhale@darwinpw.com

