

The Colliers logo consists of the word "Colliers" in a white serif font, centered within a dark blue rounded rectangle. Below the rectangle is a horizontal bar with a rainbow gradient from red to blue.A wide-angle photograph of a modern, single-story commercial building with a white facade and large windows. A prominent white tower section on the left has "ENZO AUTO SALES" written in red on its upper levels. The building is surrounded by a paved parking lot with blue handicapped parking spaces and some greenery. The sky is clear and blue.

For Sale or Lease

Owner/User or Investment Opportunity

2445 Albatross Way, Sacramento, CA

Nathan Miller
Senior Associate
+1 916 563 3011
nathan.miller@colliers.com
CA Lic. 02097602

Mark Demetre, SIOR
Executive Vice President
+1 916 563 3010
mark.demetre@colliers.com
CA Lic. 00852871

Michael Hoo, MBA
Associate Vice President
+1 916 563 3087
michael.hoo@colliers.com
CA Lic. 01989521

Property Overview

Highlights

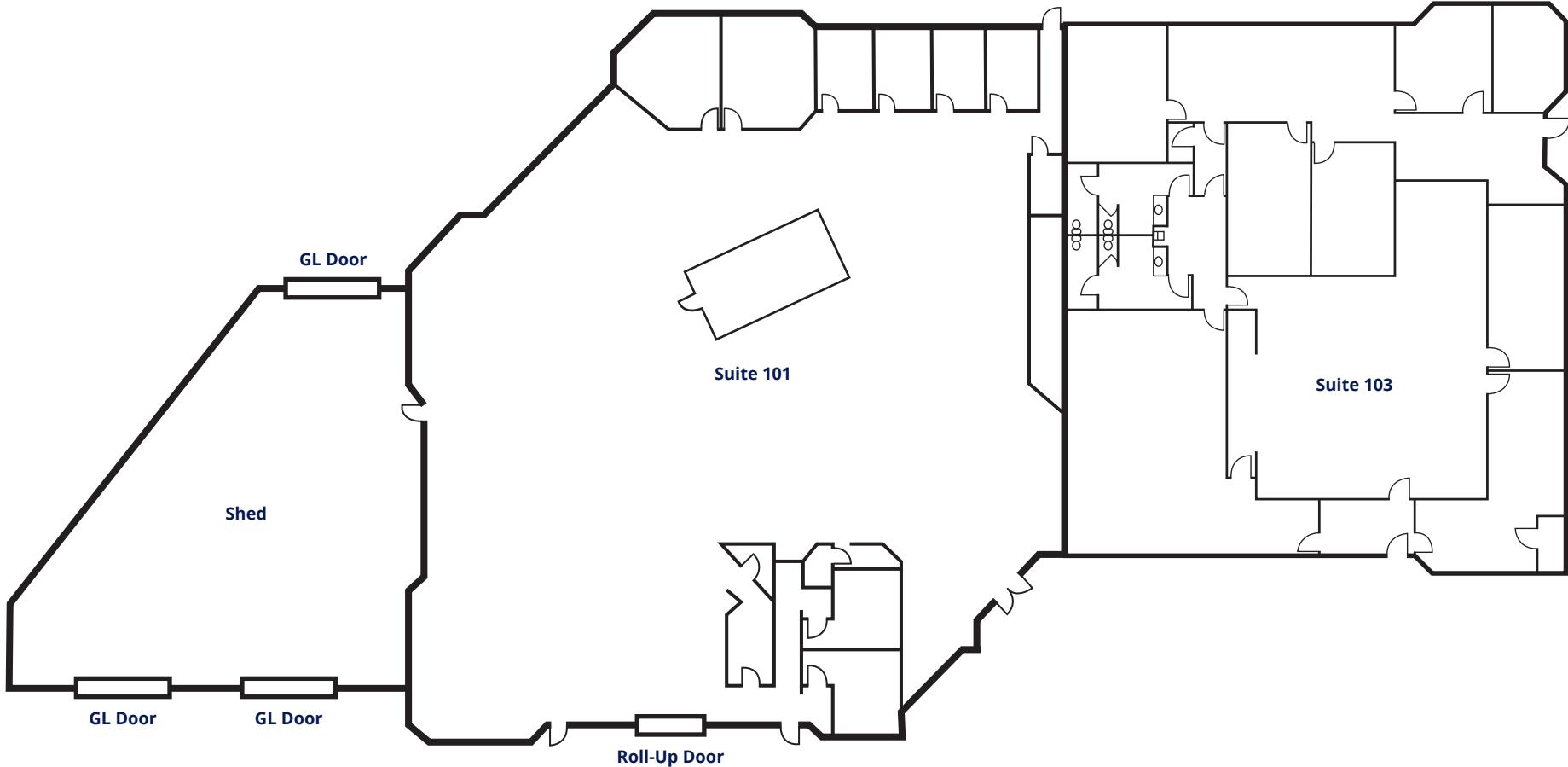
- ±19,635 SF Flex/Industrial Building
- Freeway Visibility
- ±0.48 AC Parcel
- Abundant Parking
- ±12,000 SF Fenced, Paved Yard Space
- ±3,000 SF Metal Shed
- Zoned M-1, City of Sacramento
- 4 Grade Level Doors
- Showroom
- ±12-14' Clear Height Possible
- Built in 1985
- Wood Frame Construction



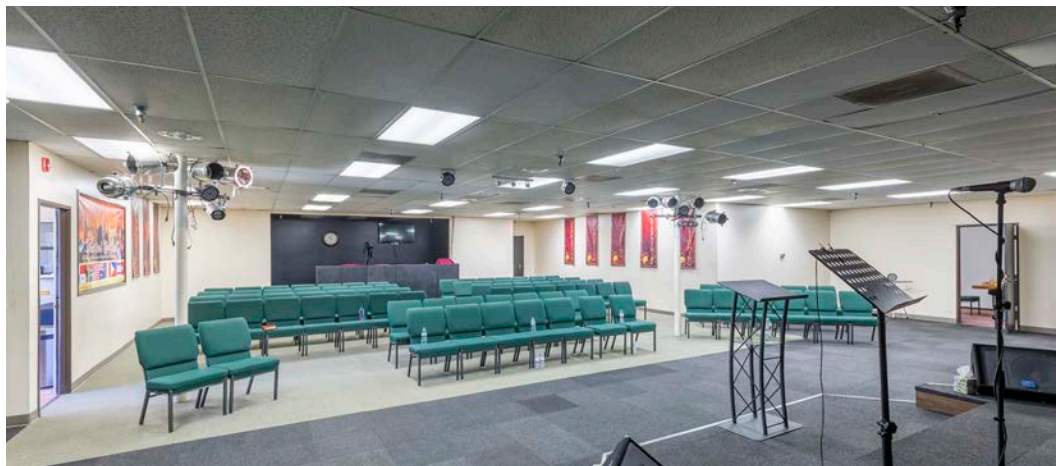
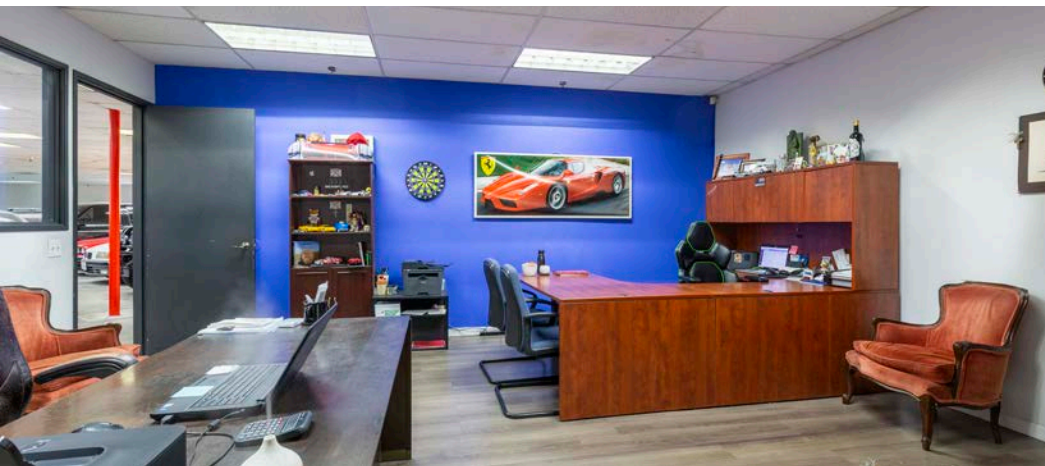
Floor Plans

Suite 101 | ±12,850 SF

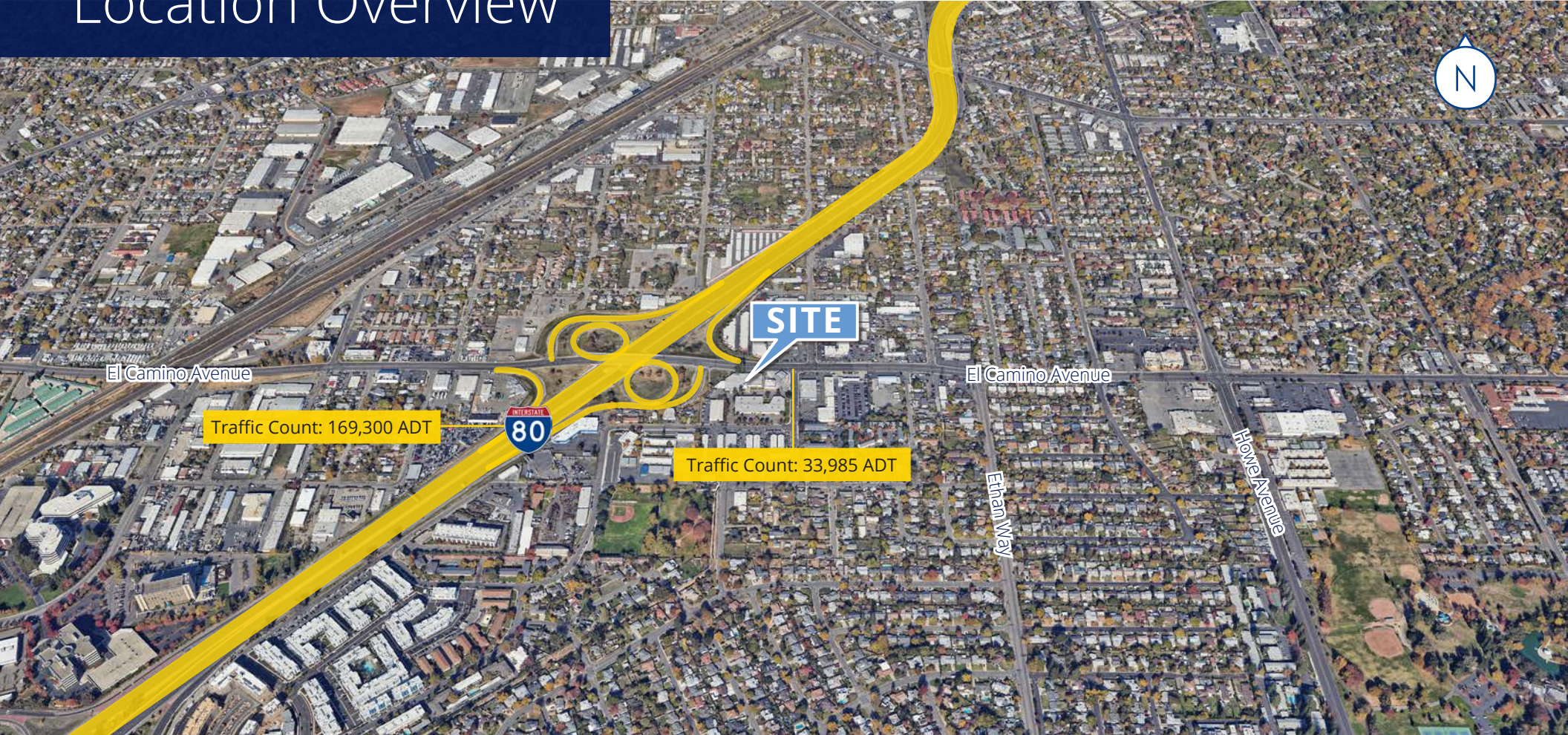
Suite 103 | ±6,785 SF



Property Photos



Location Overview



Nathan Miller
Senior Associate
+1 916 563 3011
nathan.miller@colliers.com
CA Lic. 02097602

Mark Demetre, SIOR
Executive Vice President
+1 916 563 3010
mark.demetre@colliers.com
CA Lic. 00852871

Michael Hoo, MBA
Associate Vice President
+1 916 563 3087
michael.hoo@colliers.com
CA Lic. 01989521

