

AVAILABLE FOR LEASE

9114 58TH PLACE, KENOSHA, WI 53114



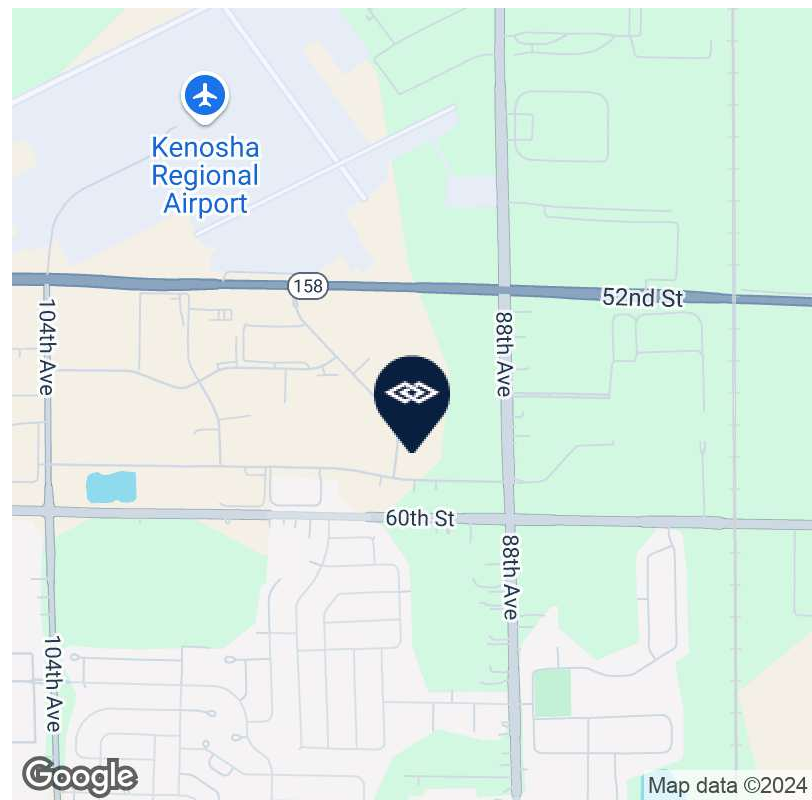
PROPERTY HIGHLIGHTS

- Rare small units with dock and drive-in access
- Zoning: M-2 (Heavy Industrial)
- Easy access for convenience

SPACES	LEASE RATE	SPACE SIZE
Unit 100	\$9.00 SF/yr	8,000 SF
Unit 500	\$9.00 SF/yr	4,000 SF

OFFERING SUMMARY

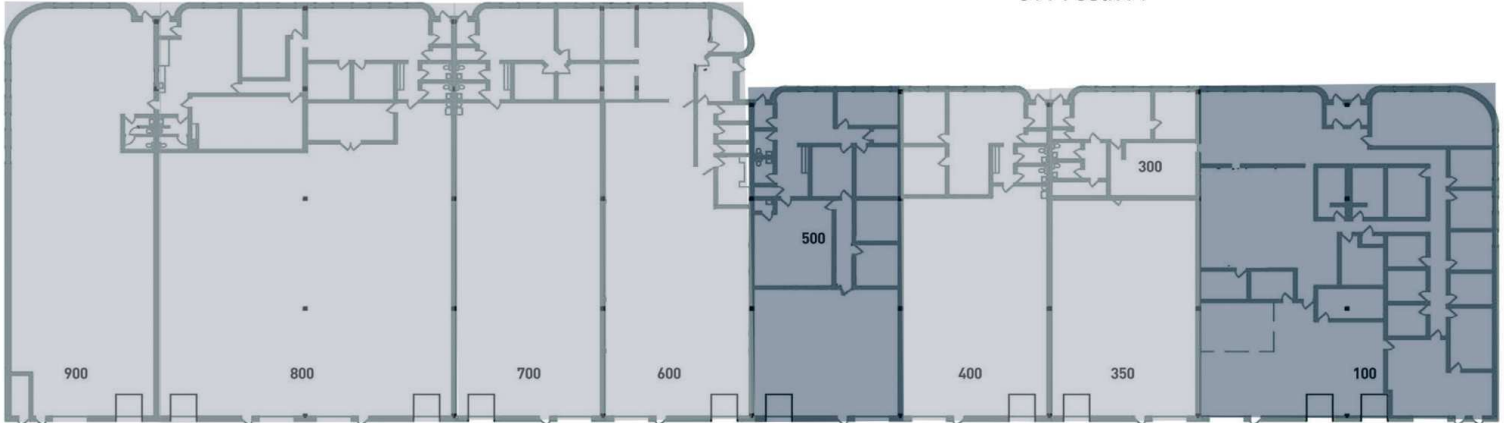
Ceiling Height	18' Clear
Loading	2 Docks and 2 Drive-in doors



AVAILABLE FOR LEASE

9114 58TH PLACE, KENOSHA, WI 53114

9114 58th Pl



LEGEND

Available

Unavailable

AVAILABLE SPACES

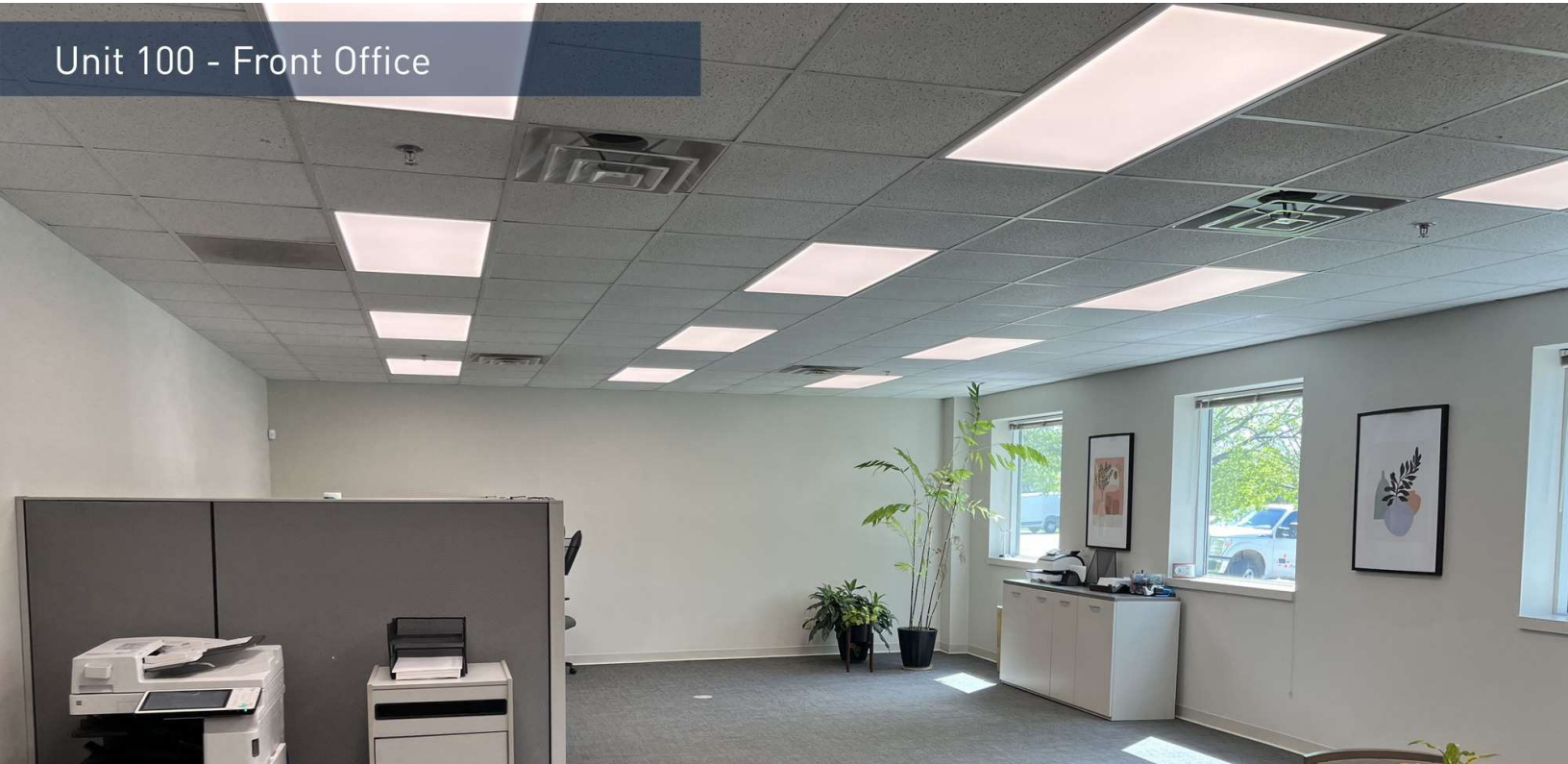
SUITE	TENANT	SIZE	TYPE	RATE	DESCRIPTION
Unit 100	Available	8,000 SF	NNN	\$9.00 SF/yr	RENT: \$9.00 psf/6,000 per month OPEX: \$3.70 psf/\$2,466.67 per month TOTAL RENT: \$8,466.67 per month
Unit 500	Available	4,000 SF	NNN	\$9.00 SF/yr	RENT: \$9.00 psf/\$3,000 per month OPEX: \$3.70 psf/\$1,233.33 per month TOTAL RENT: \$4,233.33 per month

AVAILABLE FOR LEASE

9114 58TH PLACE, KENOSHA, WI 53114



Unit 100 - Front Office



Unit 100 - Conference Room



Unit 100 - Warehouse



DAN PRENDERGAST | Vice President | 630.993.3878 | dprendergast@darwinpw.com



970 N Oaklawn, Suite 100 | Elmhurst, IL 60126 | Tel: 630.782.9520 | darwinpw.com
Submitted subject to error, change in status, or withdrawal without notice.

DISCLOSURE TO CUSTOMERS

1 Prior to negotiating on your behalf the brokerage firm, or an agent associated with the firm, must provide you the
2 following disclosure statement:

3 **DISCLOSURE TO CUSTOMERS** You are a customer of the brokerage firm (hereinafter Firm). The Firm is either an agent
4 of another party in the transaction or a subagent of another firm that is the agent of another party in the transaction. A
5 broker or a salesperson acting on behalf of the Firm may provide brokerage services to you. Whenever the Firm is
6 providing brokerage services to you, the Firm and its brokers and salespersons (hereinafter Agents) owe you, the
7 customer, the following duties:

- 8 (a) The duty to provide brokerage services to you fairly and honestly.
 - 9 (b) The duty to exercise reasonable skill and care in providing brokerage services to you.
 - 10 (c) The duty to provide you with accurate information about market conditions within a reasonable time if you request
11 it, unless disclosure of the information is prohibited by law.
 - 12 (d) The duty to disclose to you in writing certain Material Adverse Facts about a property, unless disclosure of the
13 information is prohibited by law (see lines 57-66).
 - 14 (e) The duty to protect your confidentiality. Unless the law requires it, the Firm and its Agents will not disclose your
15 confidential information or the confidential information of other parties (see lines 24-40).
 - 16 (f) The duty to safeguard trust funds and other property held by the Firm or its Agents.
 - 17 (g) The duty, when negotiating, to present contract proposals in an objective and unbiased manner and disclose the
18 advantages and disadvantages of the proposals.
- 19 Please review this information carefully. An Agent of the Firm can answer your questions about brokerage services,
20 but if you need legal advice, tax advice, or a professional home inspection, contact an attorney, tax advisor, or home
21 inspector.

22 This disclosure is required by section 452.135 of the Wisconsin statutes and is for information only. It is a plain-
23 language summary of the duties owed to a customer under section 452.133(1) of the Wisconsin statutes.

24 **CONFIDENTIALITY NOTICE TO CUSTOMERS** The Firm and its Agents will keep confidential any information given to the
25 Firm or its Agents in confidence, or any information obtained by the Firm and its Agents that a reasonable person
26 would want to be kept confidential, unless the information must be disclosed by law or you authorize the Firm to
27 disclose particular information. The Firm and its Agents shall continue to keep the information confidential after the
28 Firm is no longer providing brokerage services to you.

- 29 The following information is required to be disclosed by law:
- 30 1. Material Adverse Facts, as defined in Wis. Stat. § 452.01(5g) (see lines 57-66).
 - 31 2. Any facts known by the Firm or its Agents that contradict any information included in a written inspection
32 report on the property or real estate that is the subject of the transaction.

33 To ensure that the Firm and its Agents are aware of what specific information you consider confidential, you may
34 list that information below (see lines 36-40). At a later time, you may also provide the Firm or its Agents with other
35 information you consider to be confidential.

36 **CONFIDENTIAL INFORMATION:** _____
37 _____

38 **NON-CONFIDENTIAL INFORMATION** (the following information may be disclosed by the Firm and its Agents): _____
39 _____

40 _____ (Insert information you authorize to be disclosed, such as financial qualification information.)

41 **By signing and dating below I /we acknowledge receipt of a copy of this disclosure and that**

42 Dan Prendergast _____ and DarwinPW Realty / CORFAC International _____ are
43 Agent's Name ▲ Firm's Name ▲

44 working as: (Owner's/Listing Broker's Agent) (~~Buyer's/Tenant's Agent or Buyer's Broker's Agent~~) **STRIKE ONE**

45 **THIS IS A DISCLOSURE AND NOT A CONTRACT. Wisconsin law required the Firm to request the customer's**
46 **signed acknowledgment that the customer has received a copy of this written disclosure statement if the Firm**
47 **will provide brokerage services related to real estate primarily intended for use as a residential property**
48 **containing one to four dwelling units. SIGNING THIS FORM TO ACKNOWLEDGE RECEIPT DOES NOT CREATE**
49 **ANY CONTRACTUAL OBLIGATIONS BY EITHER THE CUSTOMER OR THE FIRM.**

50 **See the reverse side for definitions and sex offender registry information.**

51 _____
52 Customer Signature ▲ Date ▲ Customer Signature ▲ Date ▲

53 Customer's Name: _____ Customer's Name: _____

No representation is made as to the legal validity of any provision or the adequacy of any provision in any specific transaction.
Copyright © 2016 by Wisconsin REALTORS® Association Drafted by Attorney Debra Peterson Conrad

54 **NOTICE ABOUT SEX OFFENDER REGISTRY**

55 You may obtain information about the sex offender registry and persons registered with the registry by contacting the
56 Wisconsin Department of Corrections on the Internet at <http://www.doc.wi.gov> or by telephone at 608-240-5830.

57 **DEFINITION OF MATERIAL ADVERSE FACTS**

58 A "Material Adverse Fact" is defined in Wis. Stat. § 452.01(5g) as an Adverse Fact that a party indicates is of such
59 significance, or that is generally recognized by a competent licensee as being of such significance to a reasonable
60 party, that it affects or would affect the party's decision to enter into a contract or agreement concerning a transaction
61 or affects or would affect the party's decision about the terms of such a contract or agreement.

62 An "Adverse Fact" is defined in Wis. Stat. § 452.01(1e) as a condition or occurrence that a competent licensee
63 generally recognizes will significantly and adversely affect the value of the property, significantly reduce the structural
64 integrity of improvements to real estate, or present a significant health risk to occupants of the property; or information
65 that indicates that a party to a transaction is not able to or does not intend to meet his or her obligations under a
66 contract or agreement made concerning the transaction.