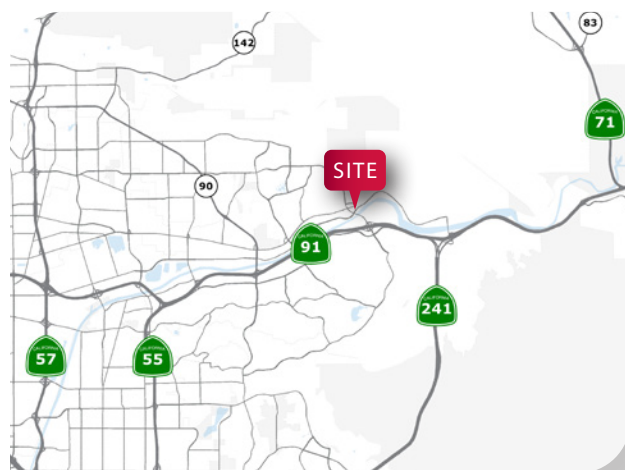


8030 E. CRYSTAL DR.
ANAHEIM, CALIFORNIA 92807



PROPERTY HIGHLIGHTS

- 4,567 SF Office Space (2,076 SF dwn | 2,500 SF up)
- 25+ Parking Stalls (5.5:1)
- Business Park Environment
- 9' Ceilings
- Cul-de-Sac Location
- 10 Private Offices, Large Furnished Conference Room, Kitchen, Break Room, 4 Restrooms
- CAT 6
- Savi Ranch Location/Multiple Retail Amenities



Scott Seal

Principal | Lee & Associates - Orange

C: 949.278.2975

sseal@lee-associates.com

DRE# 01412407

All information contained herein has been provided by Seller/Lessor and/or third parties, but has not been independently verified by Lee & Associates or its agent(s). Buyer/Lessee and interested parties should independently verify all information communicated by these sources.

8030 E. CRYSTAL DR.
ANAHEIM, CALIFORNIA 92807



Scott Seal

Principal | Lee & Associates - Orange

C: 949.278.2975

sseal@lee-associates.com

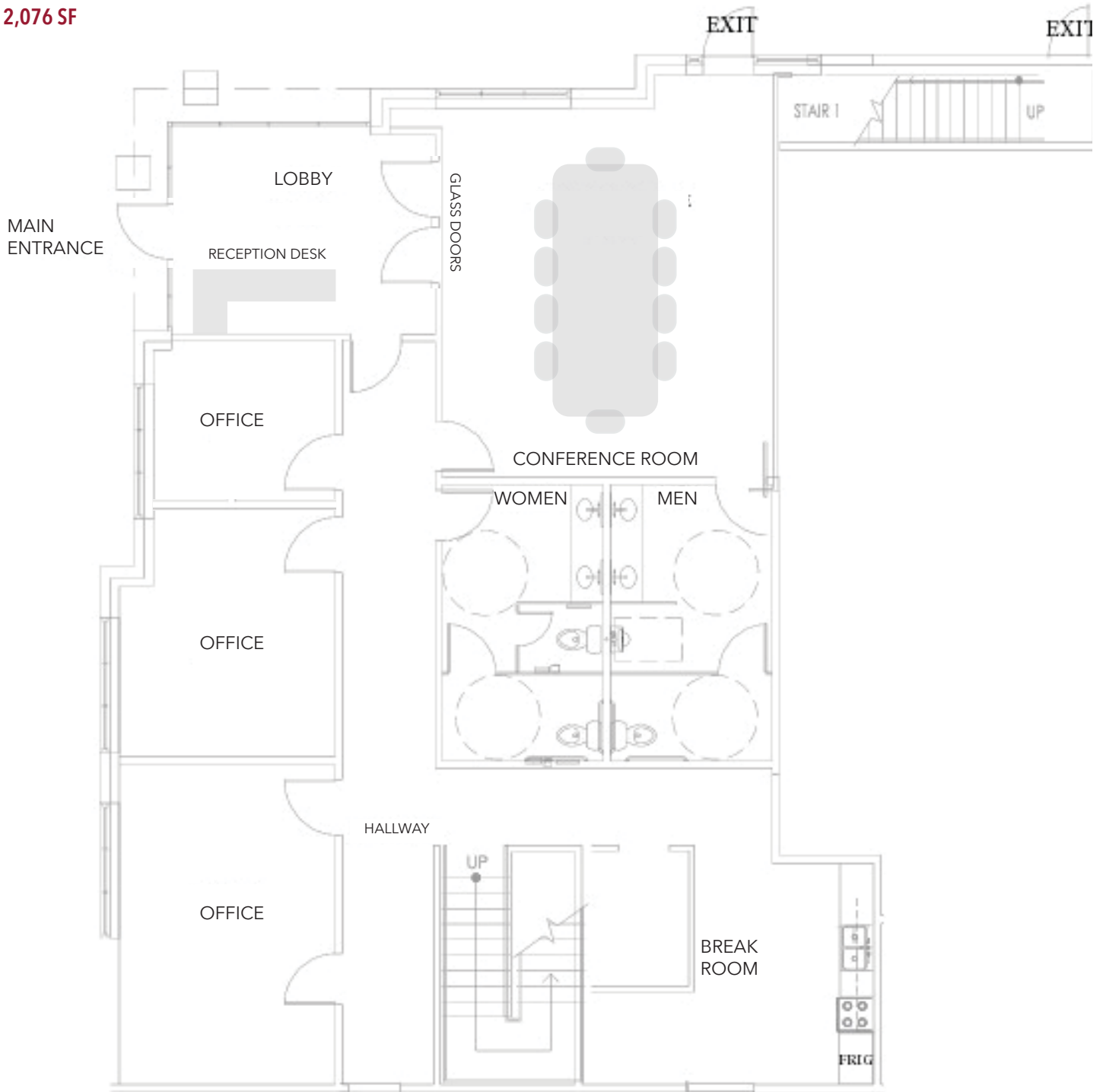
DRE# 01412407

All information contained herein has been provided by Seller/Lessor and/or third parties, but has not been independently verified by Lee & Associates or its agent(s). Buyer/Lessee and interested parties should independently verify all information communicated by these sources.

8030 E. CRYSTAL DR.
ANAHEIM, CALIFORNIA 92807



1ST FLOOR
2,076 SF



Scott Seal

Principal | Lee & Associates - Orange

C: 949.278.2975

sseal@lee-associates.com

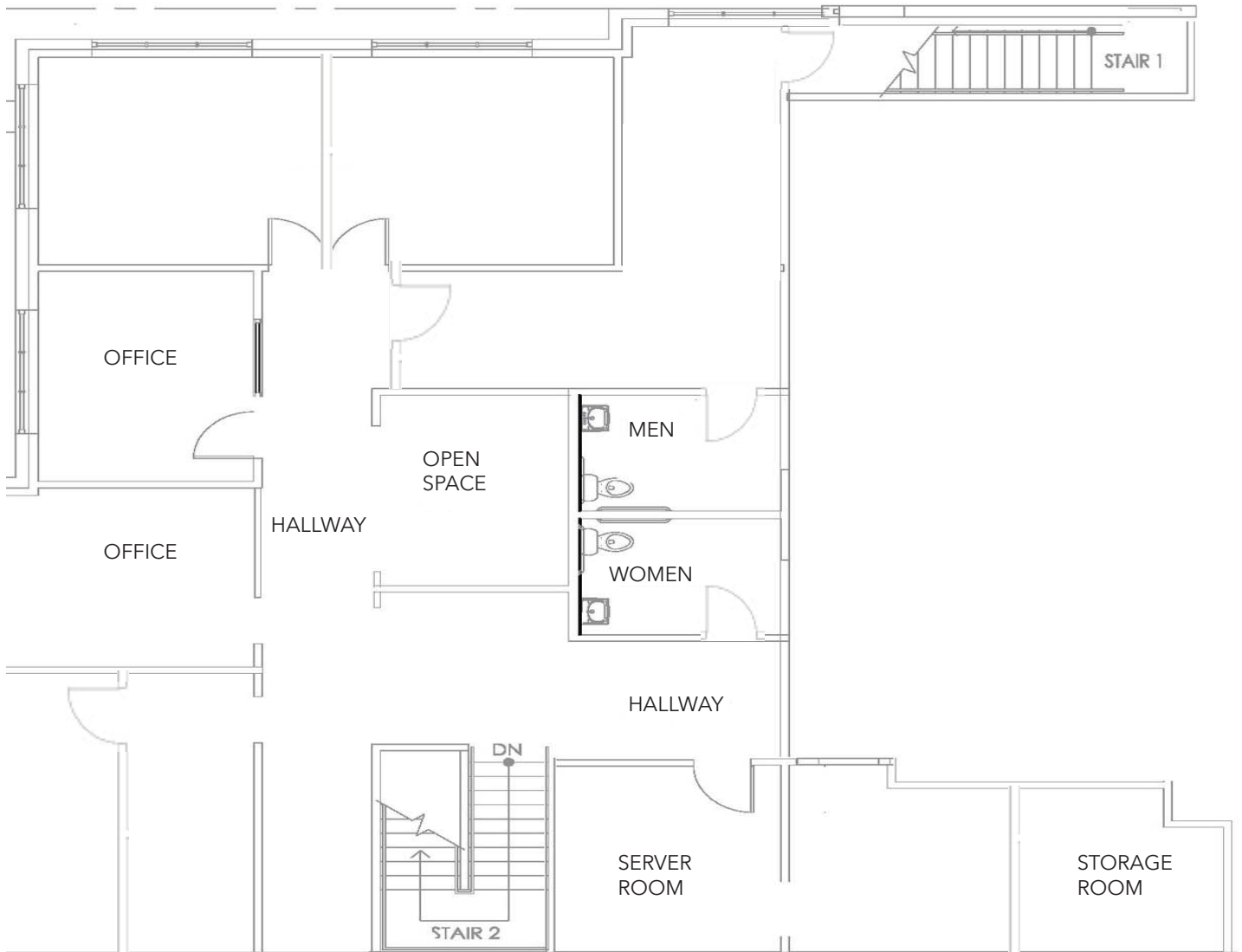
DRE# 01412407

All information contained herein has been provided by Seller/Lessor and/or third parties, but has not been independently verified by Lee & Associates or its agent(s). Buyer/Lessee and interested parties should independently verify all information communicated by these sources.

8030 E. CRYSTAL DR.
ANAHEIM, CALIFORNIA 92807



2ND FLOOR
2,500 SF



Scott Seal

Principal | Lee & Associates - Orange

C: 949.278.2975

sseal@lee-associates.com

DRE# 01412407

All information contained herein has been provided by Seller/Lessor and/or third parties, but has not been independently verified by Lee & Associates or its agent(s). Buyer/Lessee and interested parties should independently verify all information communicated by these sources.