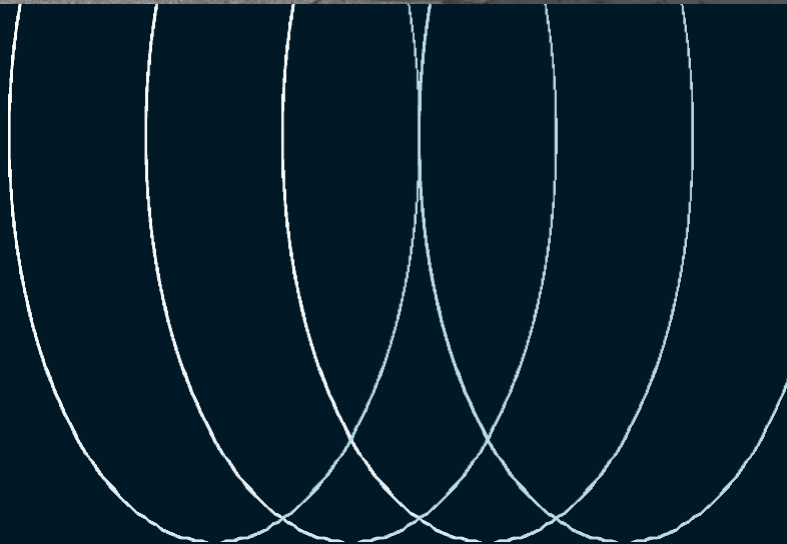
 **JLL** SEE A BRIGHTER WAY

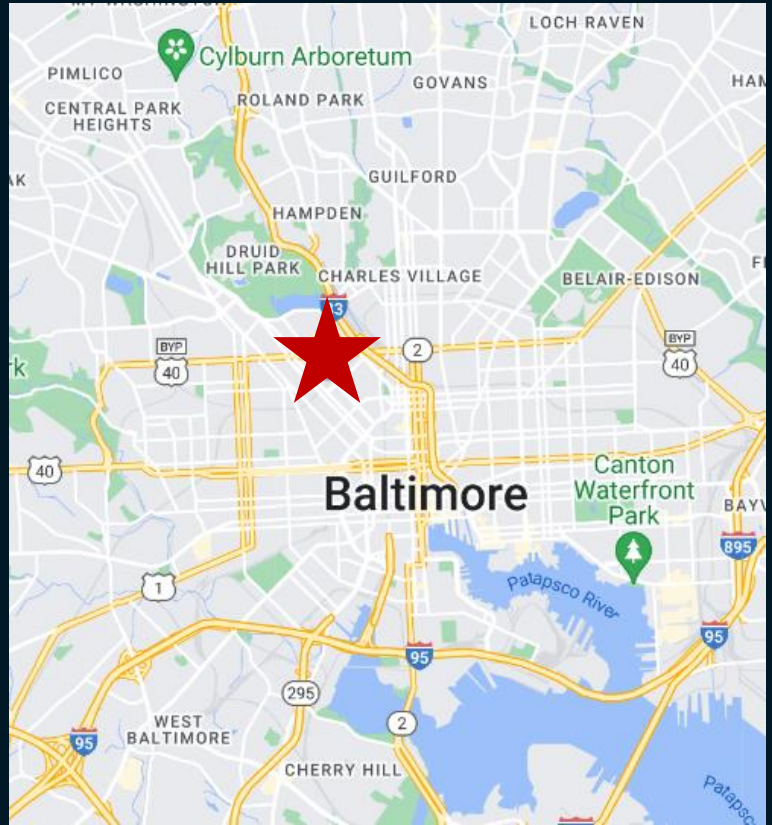
# For sale

1701 Madison Ave  
Baltimore, MD 21217  
Price: Negotiable



# Amenities

- About 0.5 miles to Metro and about 1.1 miles to Penn station
- About 0.7 miles to Maryland Institute College of Art and about 0.9 miles to the University of Baltimore
- Near restaurant, banks, convenient stores, grocery stores etc.
- About 0.2 miles west of Interstate 83 and about 0.3 miles south of West North Avenue.



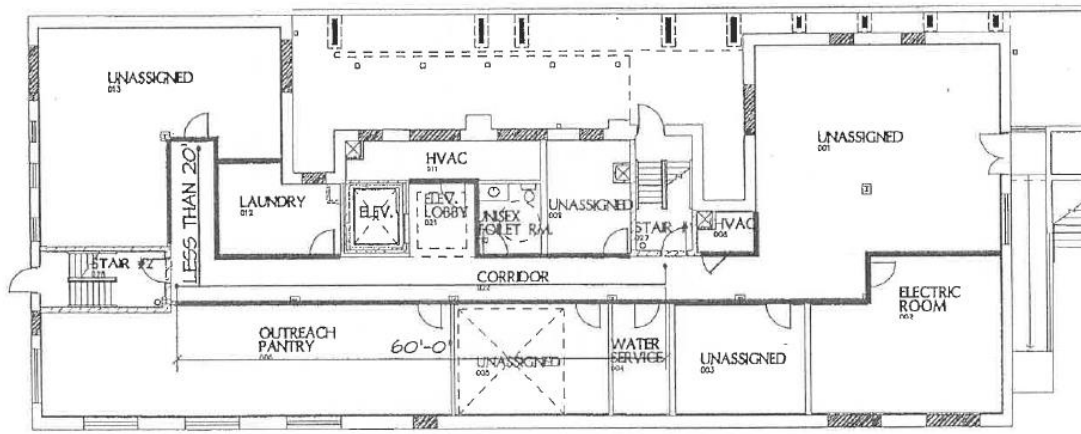
## Building description

<b>Product type</b>	Specialty/Medical use Perfect residential conversion opportunity
<b>RBA</b>	26,696 SF
<b>Land area</b>	6,499 SF on a 0.15 acre lot

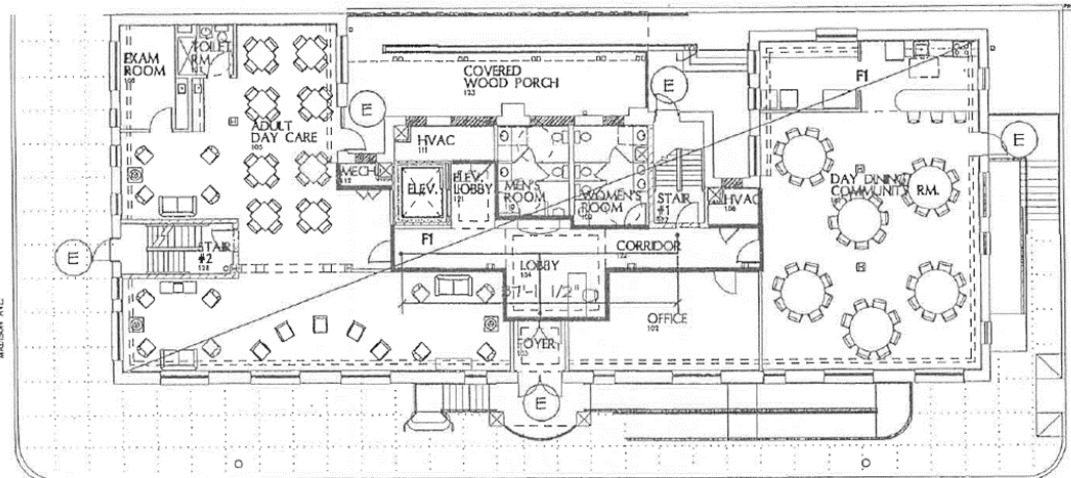


**Antony Gross**  
+1 443 931 333  
[tony.gross@jll.com](mailto:tony.gross@jll.com)

**AnneMarie Paintsil**  
+1 443 931 3351  
[annemarie.paintsil@jll.com](mailto:annemarie.paintsil@jll.com)



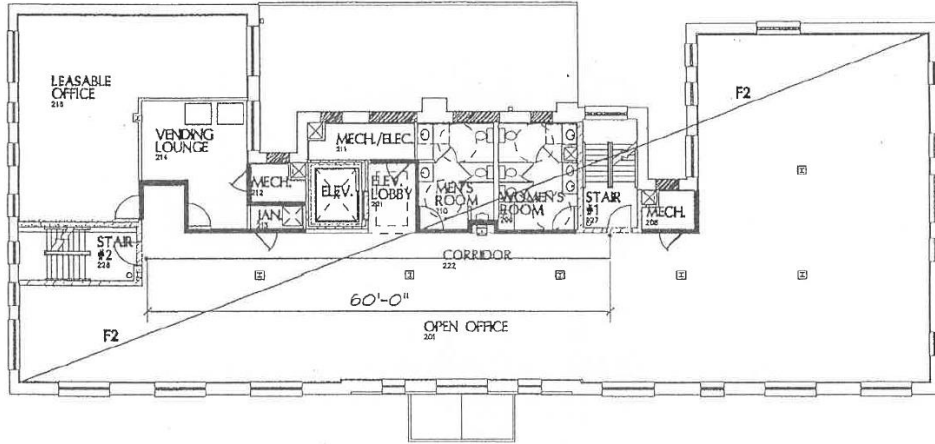
2A  
00.01 **BASEMENT PLAN**  
1/16"1'-0"



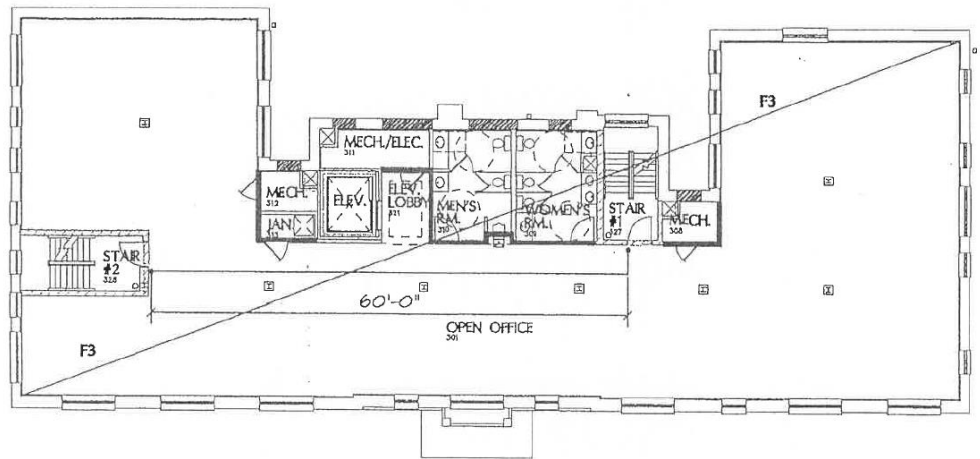
2D  
00.01 **FIRST FLOOR PLAN**  
1/16"1'-0"

**Antony Gross**  
+1 443 931 333  
tony.gross@jll.com

**AnneMarie Paintsil**  
+1 443 931 3351  
annemarie.paintsil@jll.com



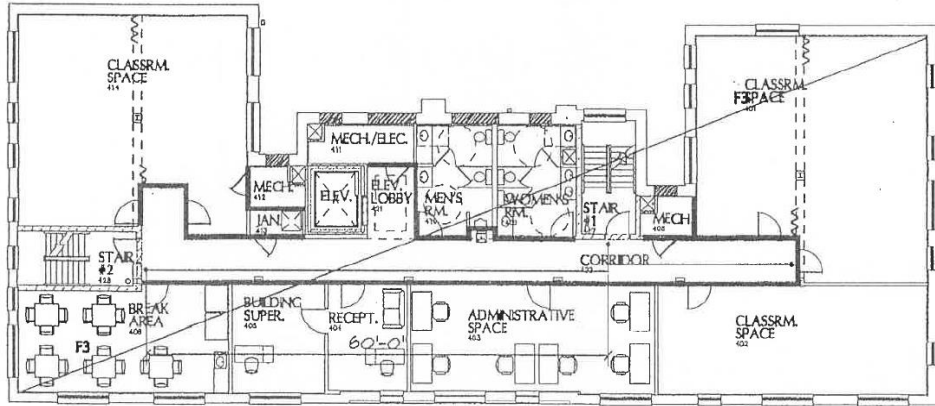
3A  
00.01 **SECOND FLOOR PLAN**  
1/16"1'-0"



3D  
00.01 **THIRD FLOOR PLAN**  
1/16"1'-0"

**Antony Gross**  
+1 443 931 333  
tony.gross@jll.com

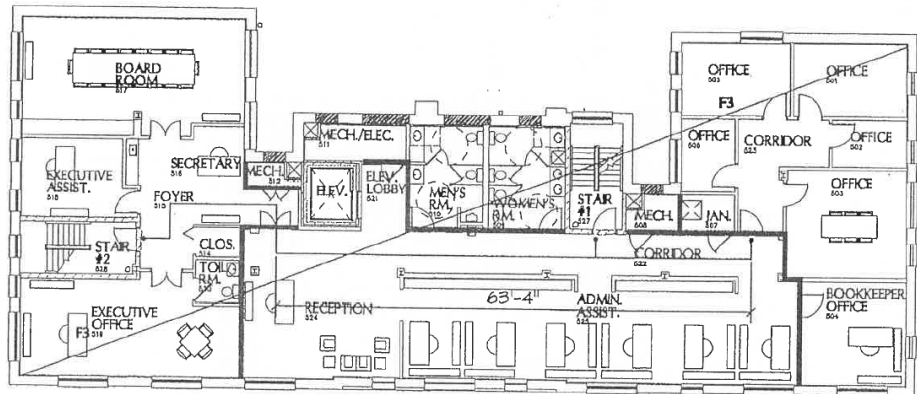
**AnneMarie Paintsil**  
+1 443 931 3351  
annemarie.paintsil@jll.com



5A  
00.01

### FOURTH FLOOR PLAN

1/16"=1'-0"



5D  
00.01

### FIFTH FLOOR PLAN

1/16"=1'-0"

**Antony Gross**  
+1 443 931 333  
tony.gross@jll.com

**AnneMarie Paintsil**  
+1 443 931 3351  
annemarie.paintsil@jll.com