

# ±3.74 ACRES IN JURUPA VALLEY

City of Jurupa Valley, California



## PROPERTY DETAILS

ADDRESS	4350 Riverview Drive
CITY	Jurupa Valley, CA
APN	182-333-003, 182-333-004, 181-261-029, 181-160-013
ACRES	±3.74
ZONING	Ranch (EDR)
CURRENT USE	The acreage is the last remaining parcel of the Jensen Alvarado Ranch estate. The remnants of an historic farmhouse and active farm remain.



### The Hoffman Company

18881 Von Karman Ave., Ste 150, Irvine, CA 92612  
T 949.553.2020 • [www.hoffmanland.com](http://www.hoffmanland.com)  
CA Lic #01473762

**Justin Woodworth • T 949.705.0929**

[jwoodworth@hoffmanland.com](mailto:jwoodworth@hoffmanland.com) • CA DRE #01845652

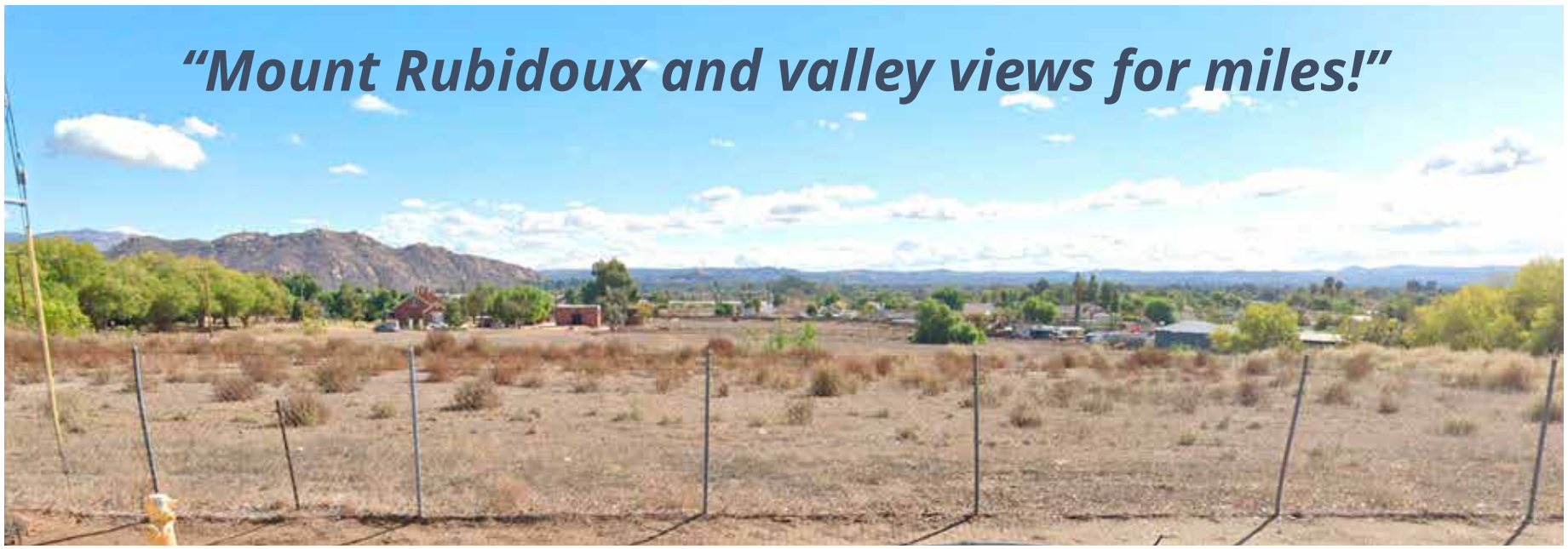


# CLOSE-UP AERIAL





## STREET VIEW PHOTOS



***“Mount Rubidoux and valley views for miles!”***

Southwesterly view from Limonite Ave



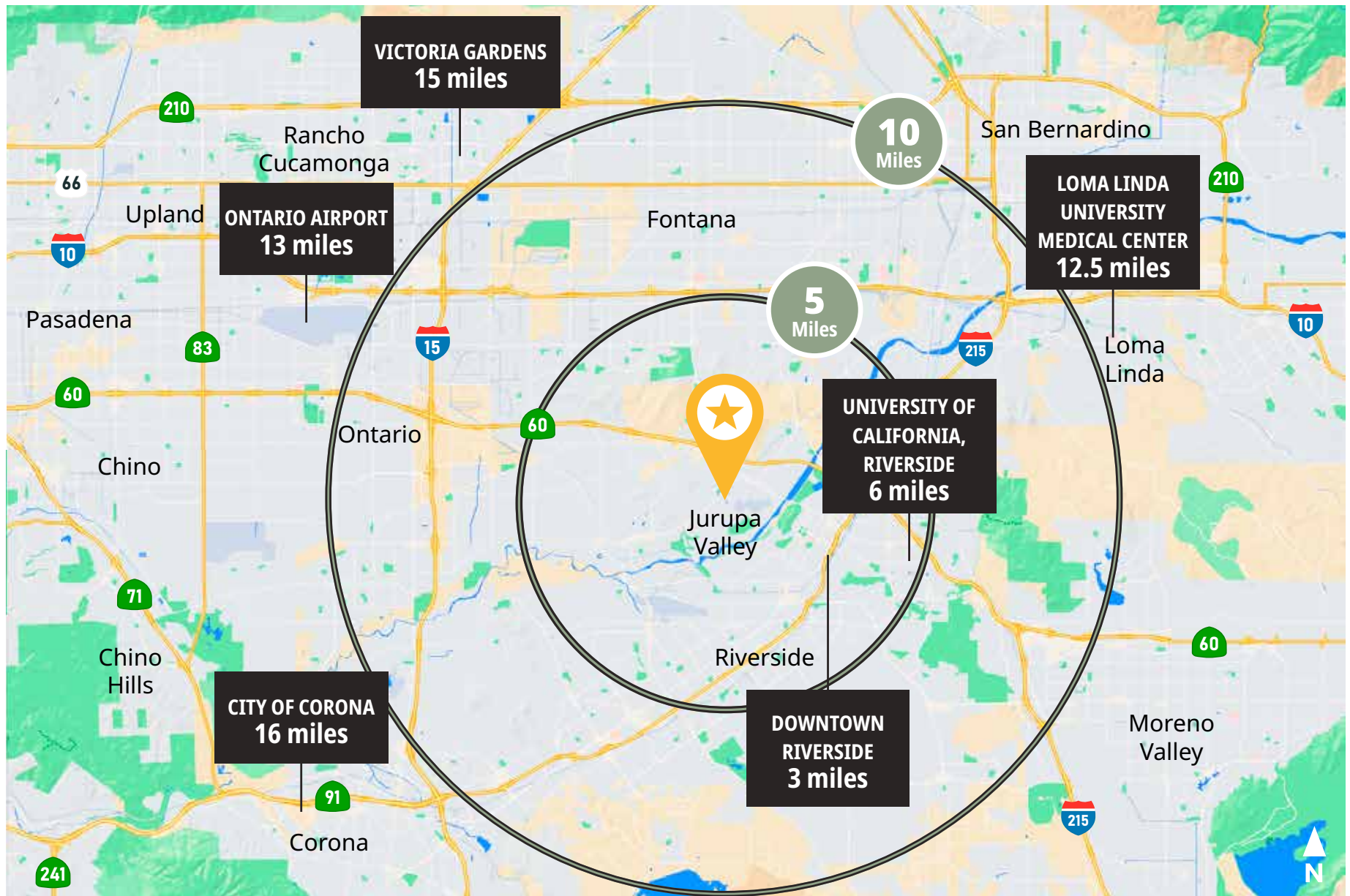
Southerly view from Limonite Ave



Southerly view from Limonite Ave



# VICINITY AERIAL + DRIVE TIMES







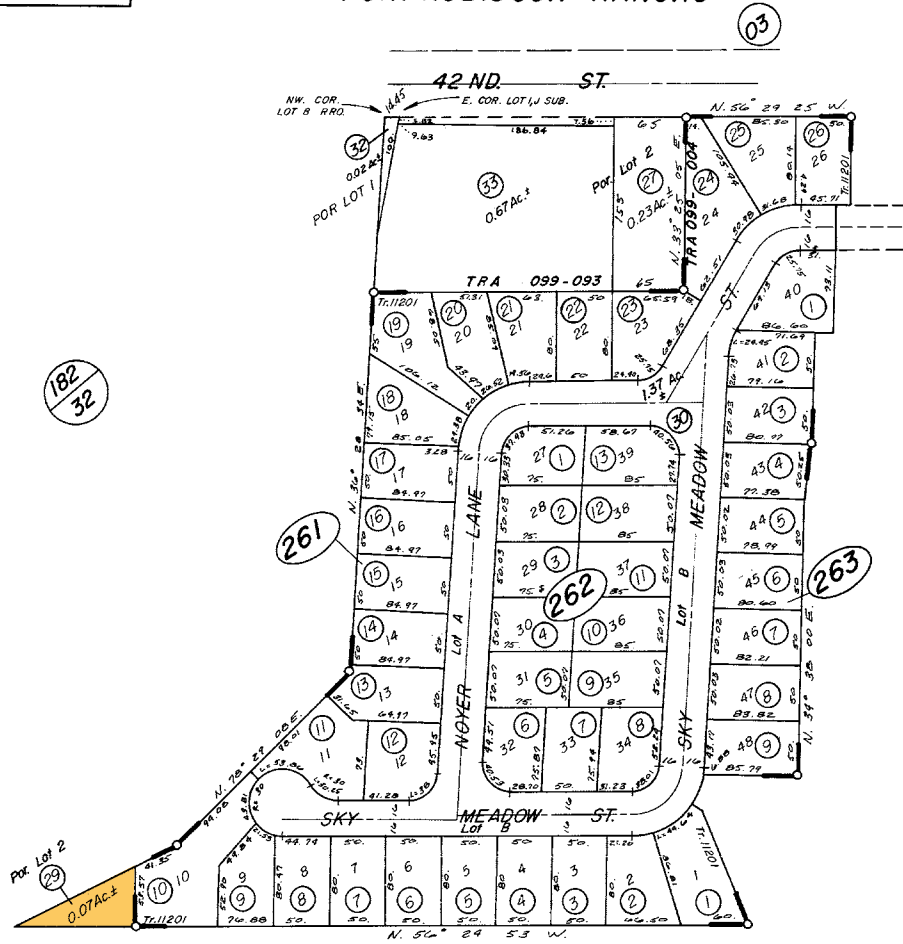


# ASSESSOR'S PARCEL MAP | PARCEL 181-261-029

THIS MAP IS FOR  
ASSESSMENT PURPOSES ONLY

POR. RUBIDOUX RANCHO

T.R.A. 099-004  
099-093  
181-14  
181-26



182  
32

261

16

03

24

M.B. 111/99-102 TRACT NO. 11201  
M.B. 7/36 S.B. Rubidoux Rancho  
RS 1/21 JENSEN'S SUBDIVISION

DATE	OLD NO.	NEW NO.
9/80	Add Asmt	30
12/80	28	31, 32
1/88	31	33, 37

ASSESSOR'S MAP BK.181 PG. 26  
RIVERSIDE COUNTY, CALIF.  
PAC

MAR. 1980



±3.74 ACRES IN JURUPA VALLEY