



5.2 Acres - Robert Crain Hwy, Brandywine, MD 20613

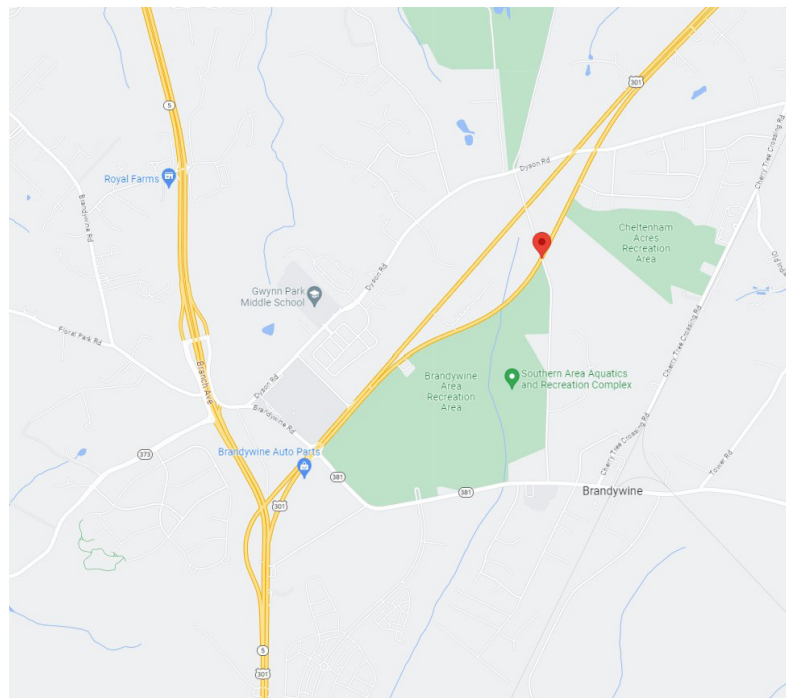
Property Features

- Approx 5.2 Acres
- Zoned C-S (Commercial Services)
- Property has exposure and direct access from both Sides of Rt. 301 and Missouri Avenue
- Sewer & water category 3
- Development opportunity for a long-term lease
- Traffic count - 31,733 vpd (Rt 301)
- **\$15,000/ month (plus real estate taxes)**
- Real estate taxes - \$1,904.83

For more information, contact:

Andy Mayr, CCIM

+1 301 918 2919 • amayr@naimichael.com



Steve Catalano

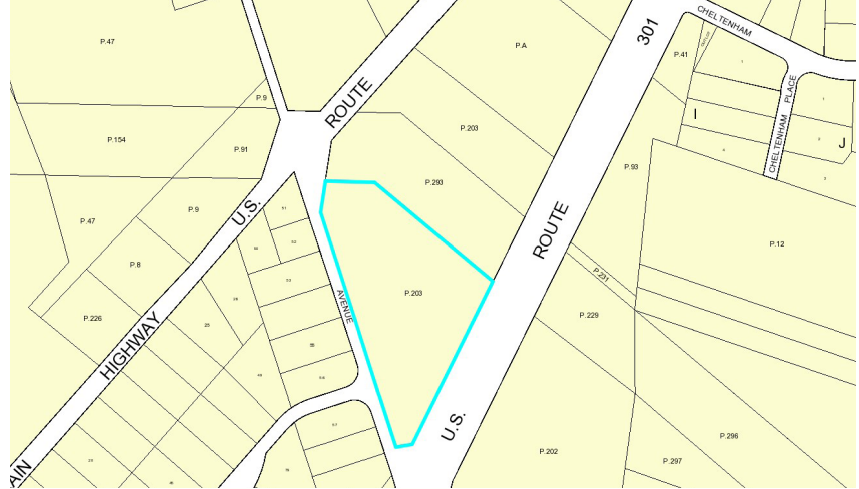
+1 240 828 8288 • scatalano@naimichael.com

The information contained herein has been given to us by the owner of the property or other sources we deem reliable. We have no reason to doubt its accuracy, but we do not guarantee it. Floor plans, site plans and other graphic representations of this property have been reduced and reproduced, and are not necessarily to scale. All information should be verified prior to purchase or lease.

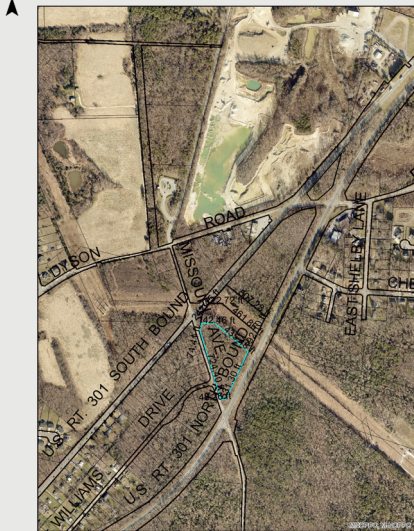
10100 Business Parkway
Lanham, Maryland 20706
+1 301 459 4400
naimichael.com

For Lease

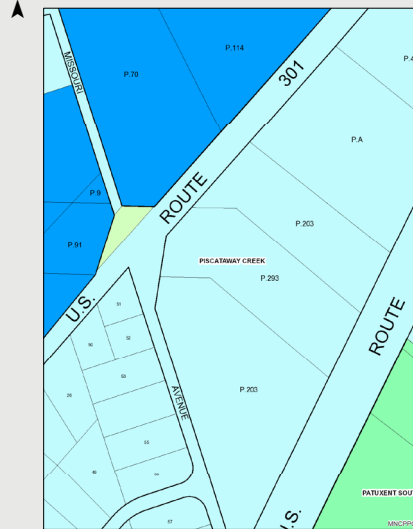
5.2 Acres, Robert Crain Hwy
Brandywine, MD 20613



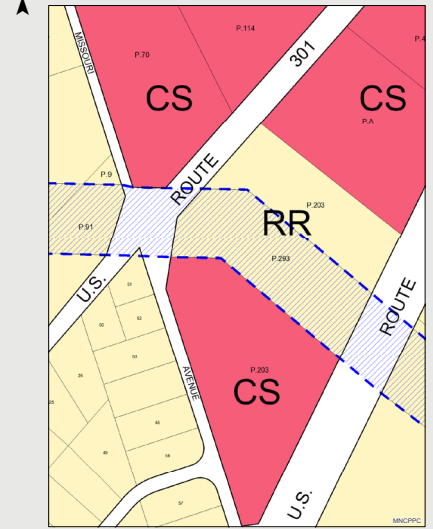
Crain Hwy/Missouri Ave Land



Missouri Ave land - Sewer/water Category S 3 & W3



Missouri Ave land - Zoning



10100 Business Parkway
Lanham, Maryland 20706
+1 301 459 4400
naimichael.com