



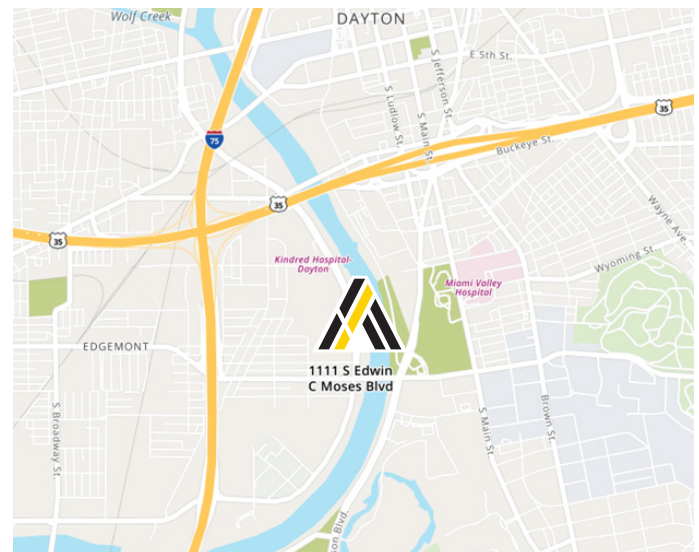
# 1111 S. Edwin C. Moses Blvd.

Dayton, Ohio 45417

**LEASE RATE:  
UPON REQUEST**

## Property Highlights

- 13,000± SF Office
  - Functional layout features multiple offices, a kitchenette plus access to a shared conference room
  - High ceilings offer flexibility for a variety of business uses
- 5,000± SF Full Kitchen
  - Rare, fully equipped kitchen - ideal for catering or food production
  - Multiple full size walk-in freezers/coolers, large range & hood
  - Two private docks for easy distribution
- 7,300± SF Retail/Office space - Available July 1, 2025
- Common area conference room
- Two shared docks (10' x 8')
- High-bay warehouse storage available (see photos)
- Less than 1.5 miles from I-75 and approximately 1 mile to US-35
- In close proximity to Downtown Dayton, The University of Dayton and surrounded by multiple amenities



Demographics	1 Mile	3 Mile	5 Mile
Total Population	3,399	98,180	225,079
Total Households	1,170	41,110	97,854



**Joe Krug**

Senior Associate

937.701.1083

Joe.Krug@ApexCommercialGroup.com



**Aaron Savino, SIOR**

Principal

937.469.8269

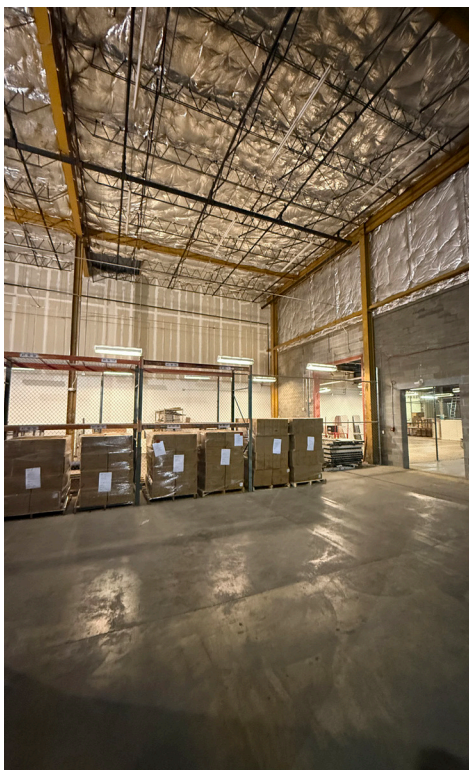
Aaron.Savino@ApexCommercialGroup.com



# 1111 S. Edwin C. Moses Boulevard

Dayton, Ohio 45417

## Photos



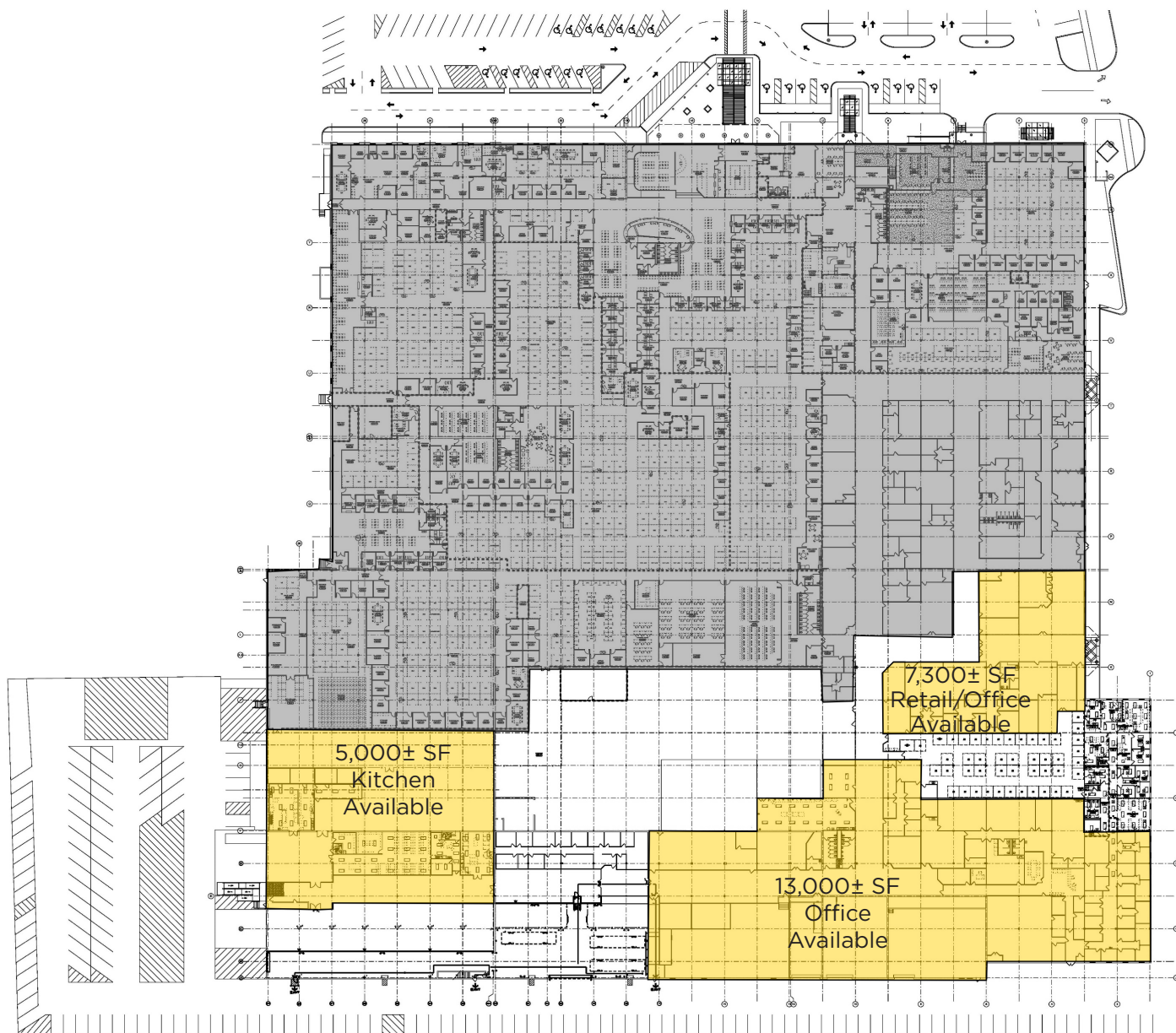
[ApexCommercialGroup.com](https://www.ApexCommercialGroup.com)



# 1111 S. Edwin C. Moses Boulevard

Dayton, Ohio 45417

## Floor Plan

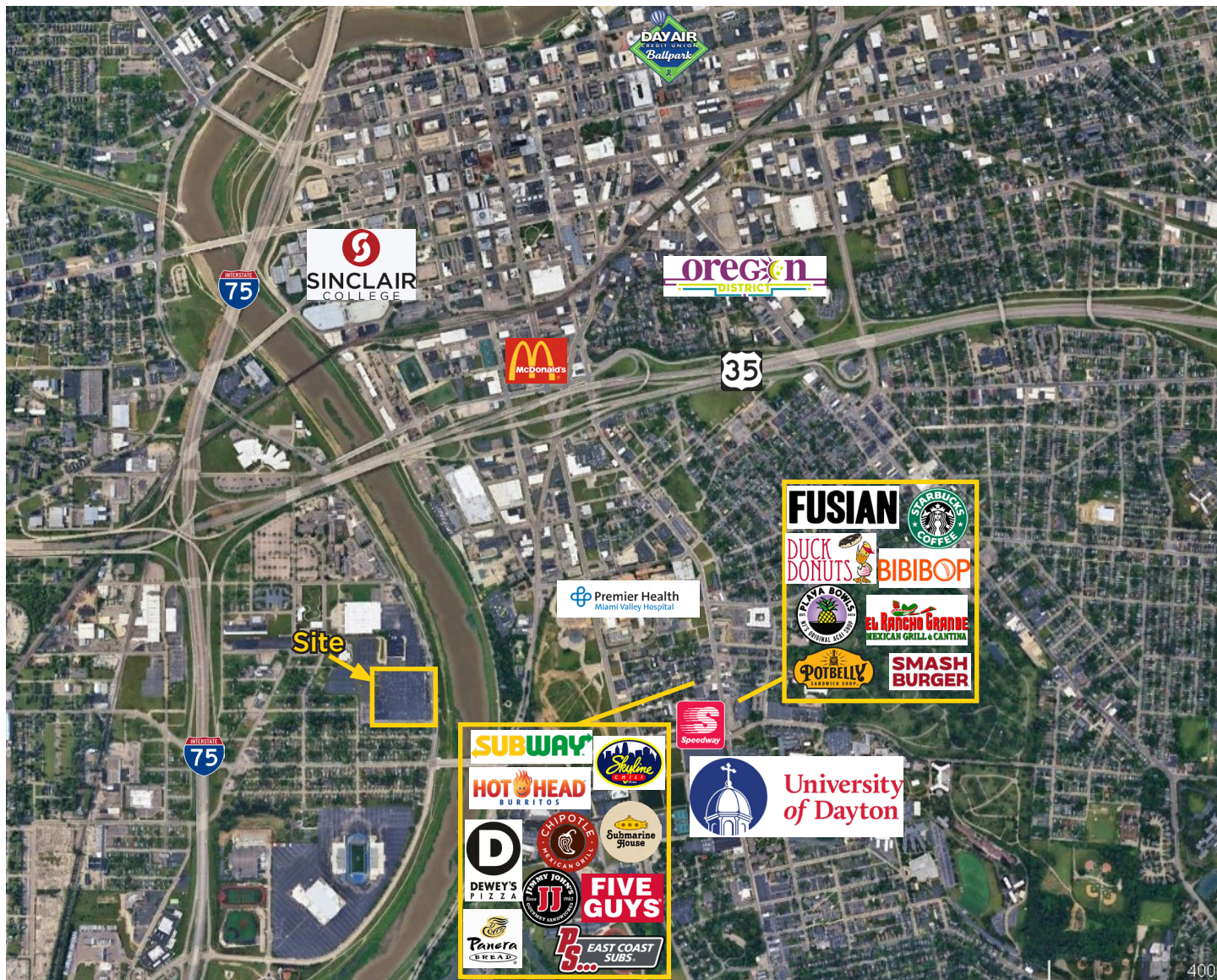




# 1111 S. Edwin C. Moses Boulevard

Dayton, Ohio 45417

## Aerial



[ApexCommercialGroup.com](http://ApexCommercialGroup.com)