

# FOR LEASE

110-115 Herricks Road  
Garden City Park, NY





# PROPERTY FEATURES



**GARDEN CITY PARK, NY**

## **Building Size**

14,175 SF

## **Space Available**

### **Building 1**

7,044 SF Total

First Floor

4,705 SF Office

Second Floor

1,028 SF Office

2,703 SF Warehouse

13.8' clear

### **Building 2**

5,266 SF Warehouse

16.3' clear

## **Possession**

Immediate

## **Loading**

2 Drive-ins

## **Parking**

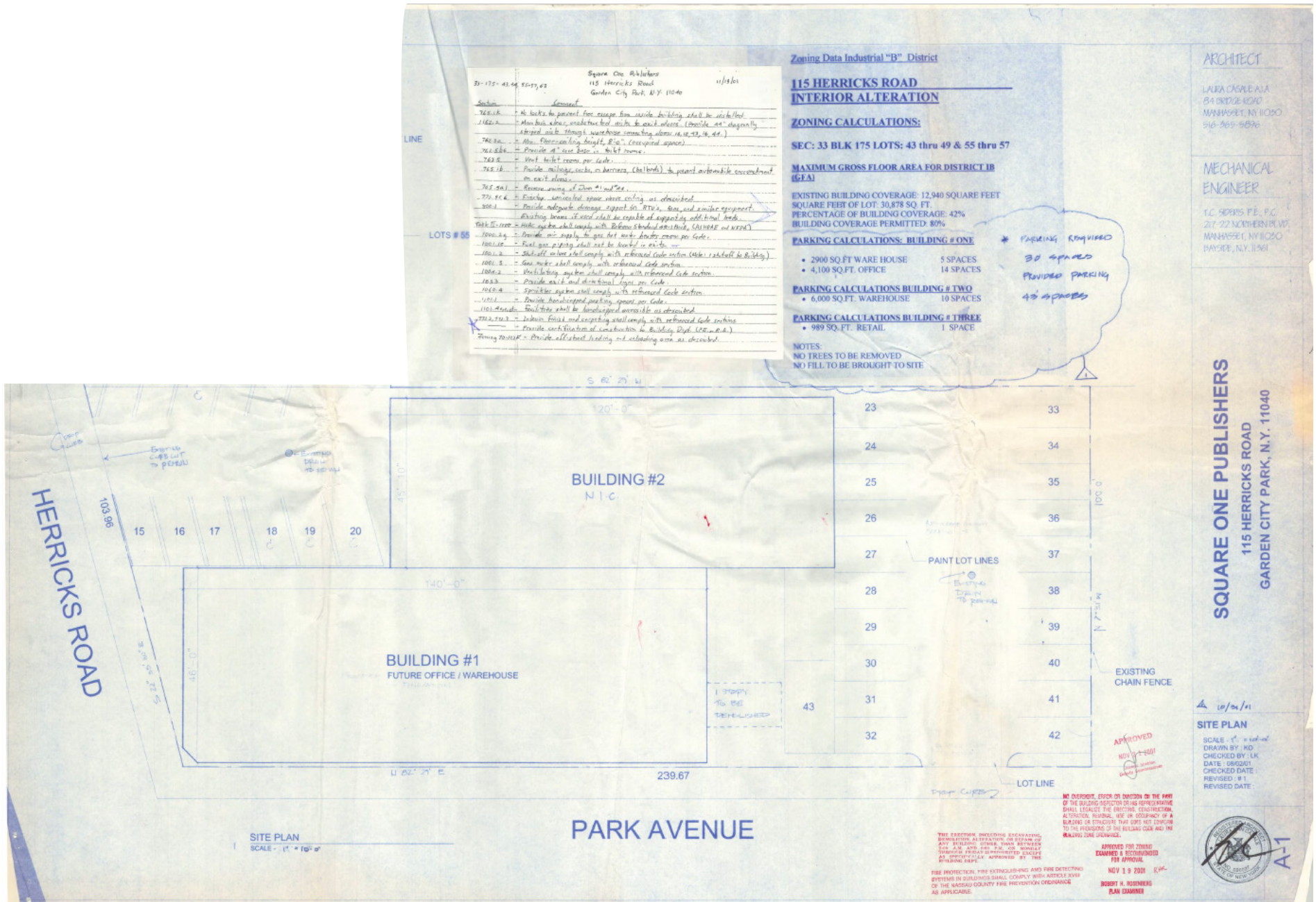
43 Spaces

## **Comments**

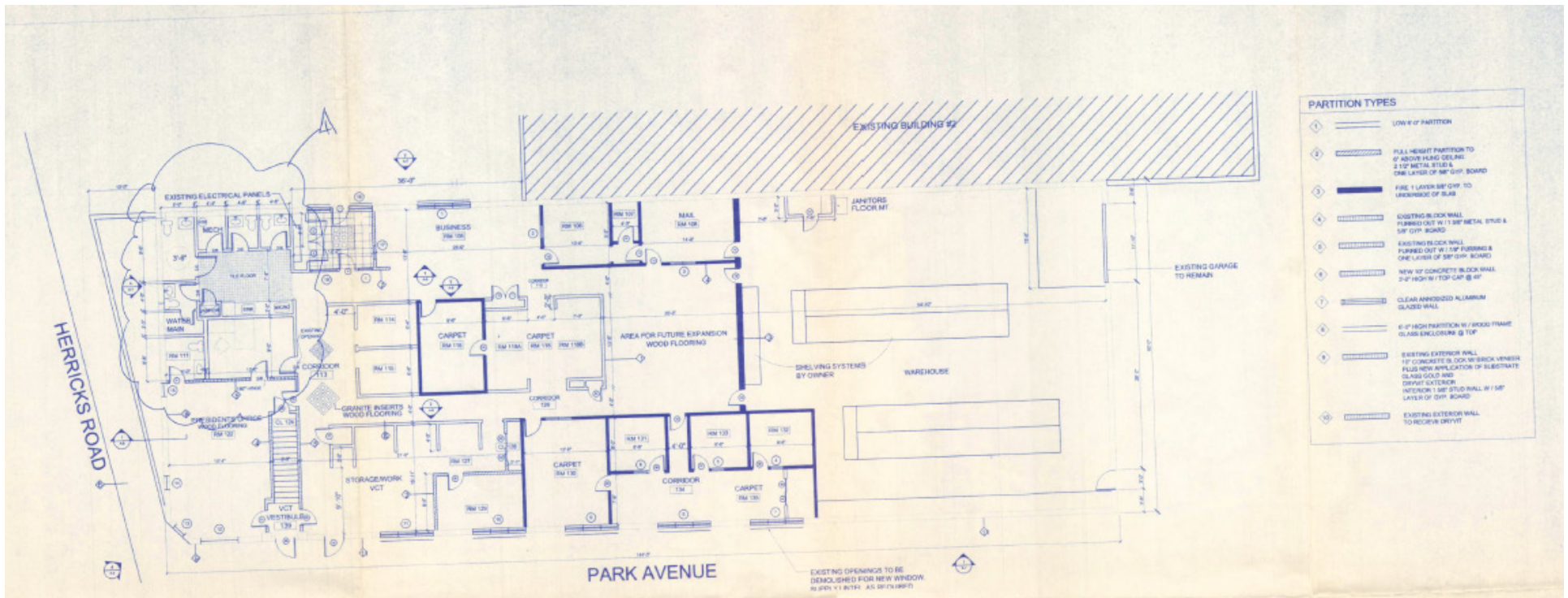
- Excellent visibility
- Great parking
- Signage opportunities



# SITE PLAN



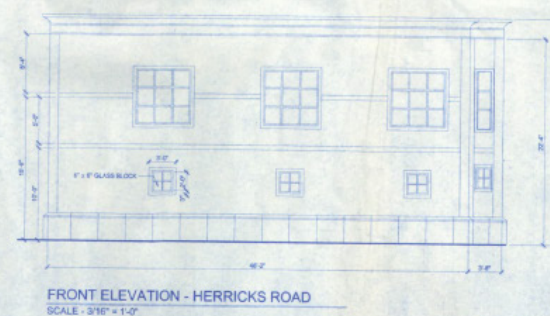
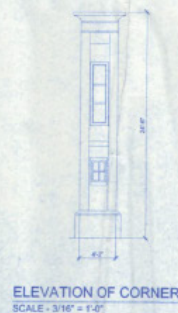
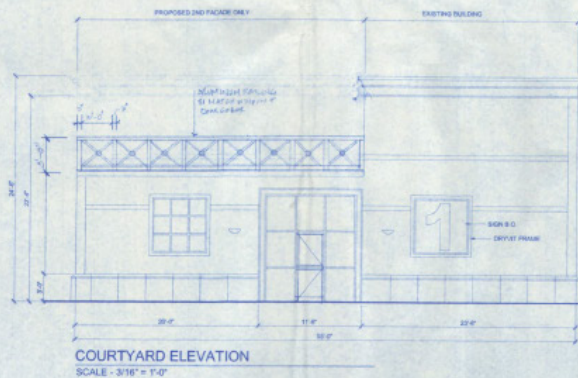
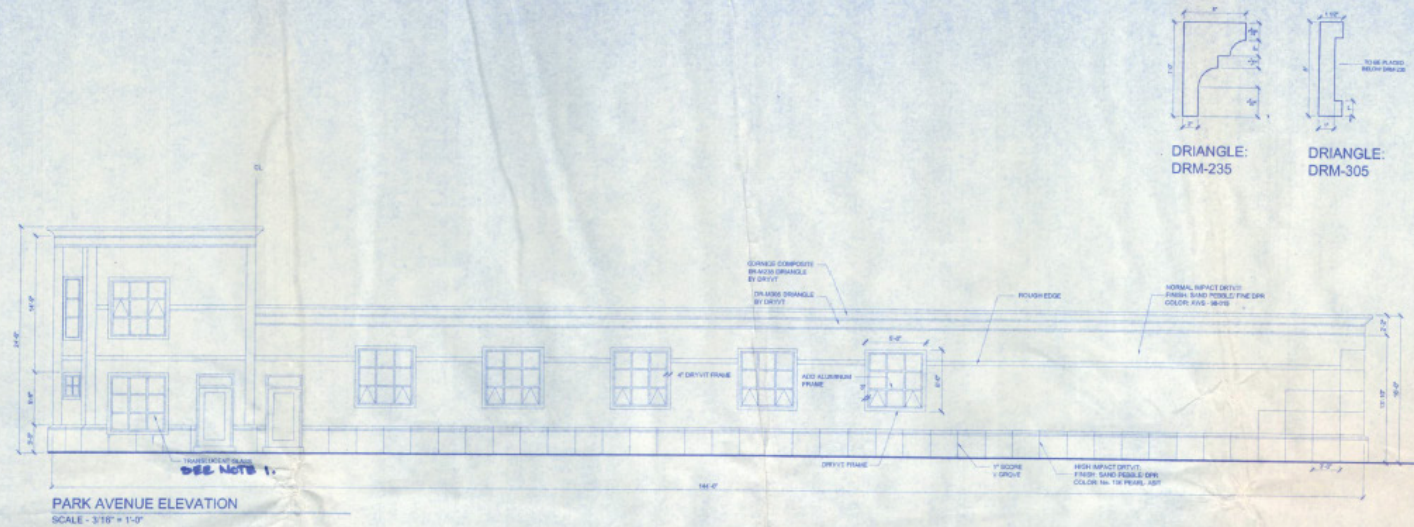
# FIRST FLOOR PLAN







# ELEVATION PLAN



GLASS NOTES: I  
AIDE 123 BENDHEIM  
(ARCHITECTURAL GLASS)  
122 HUDSON ST, NYC NY  
212-226-6370

## ARCHITECT

LAURA CASALE AIA  
84 BRIDGE ROAD  
MANHASSET, NY 11030  
516-365-5536

## MECHANICAL ENGINEER

T.G. SPERBS P.E., P.C.  
217-22 NORTHERN BLVD.  
MANHASSET, NY 11030  
BAYSIDE, N.Y. 11361

**SQUARE ONE PUBLISHERS**  
115 HERRICKS ROAD  
GARDEN CITY PARK, N.Y. 11040

10/31/01

## ELEVATION PLANS

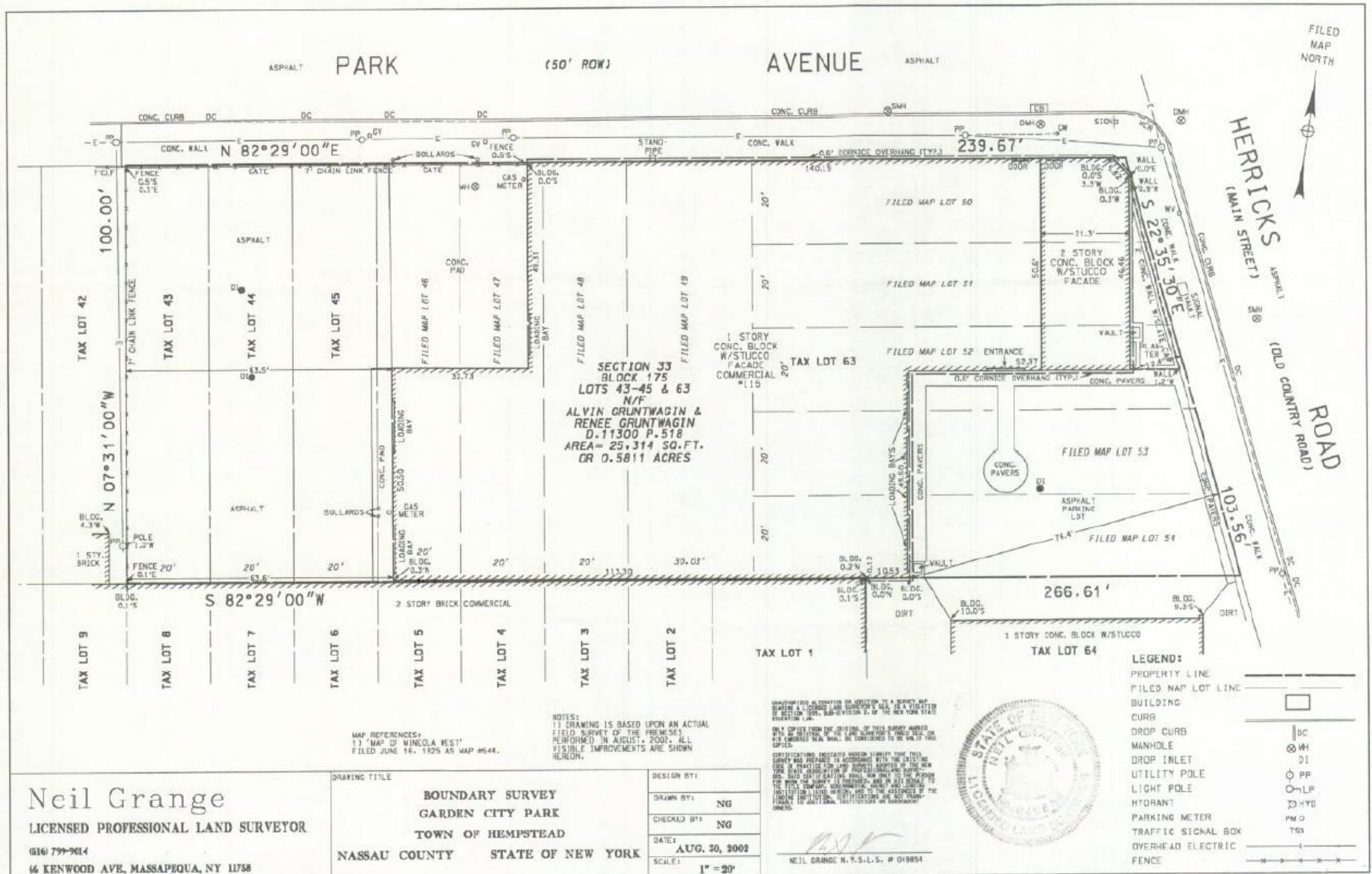
SCALE - 3/16" = 1'-0"  
DRAWN BY: KD  
CHECKED BY: LK  
DATE: 05/15/01  
CHECKED DATE:  
REVISED: # 1  
REVISED DATE



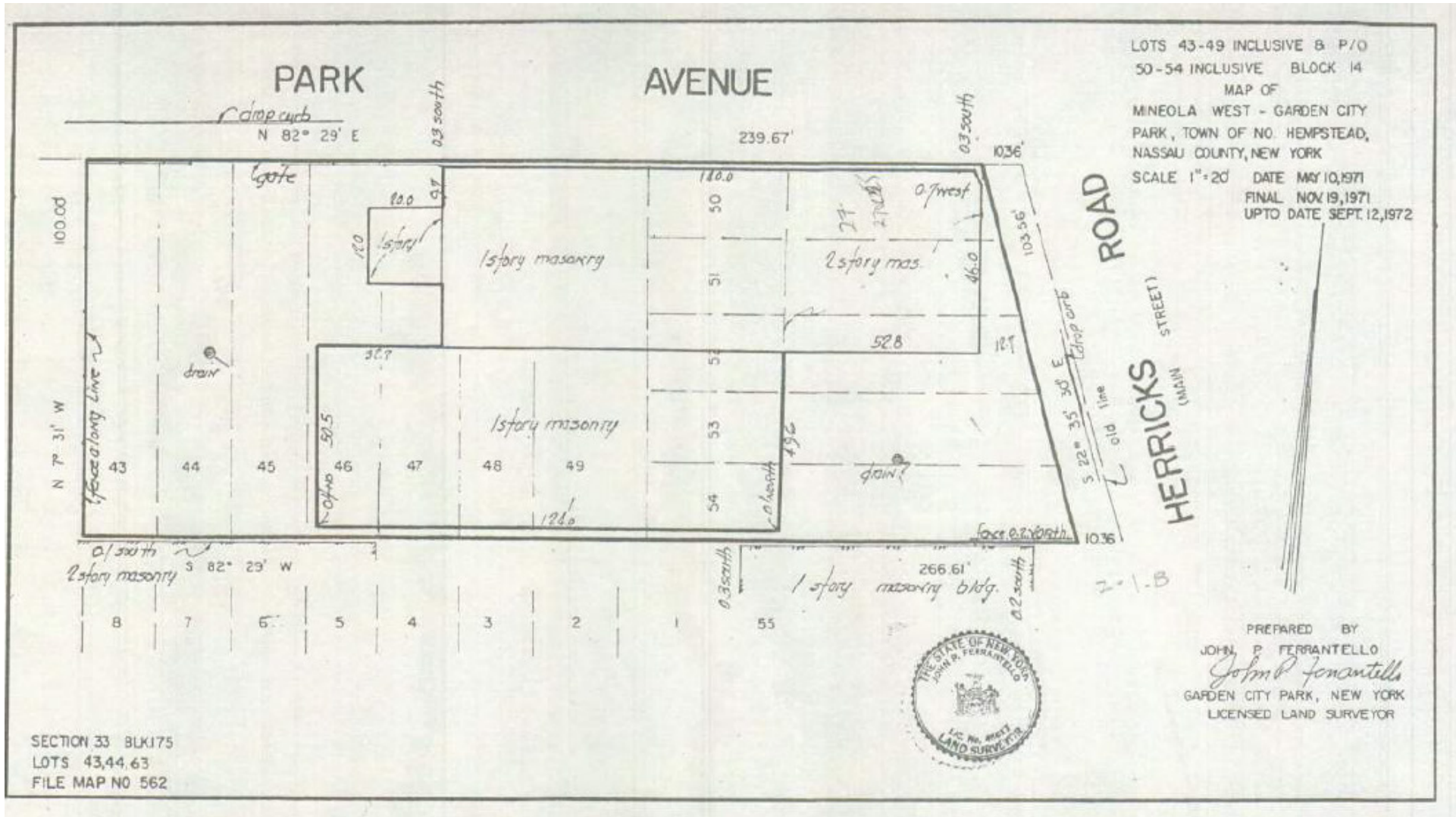
A-4



# SURVEY

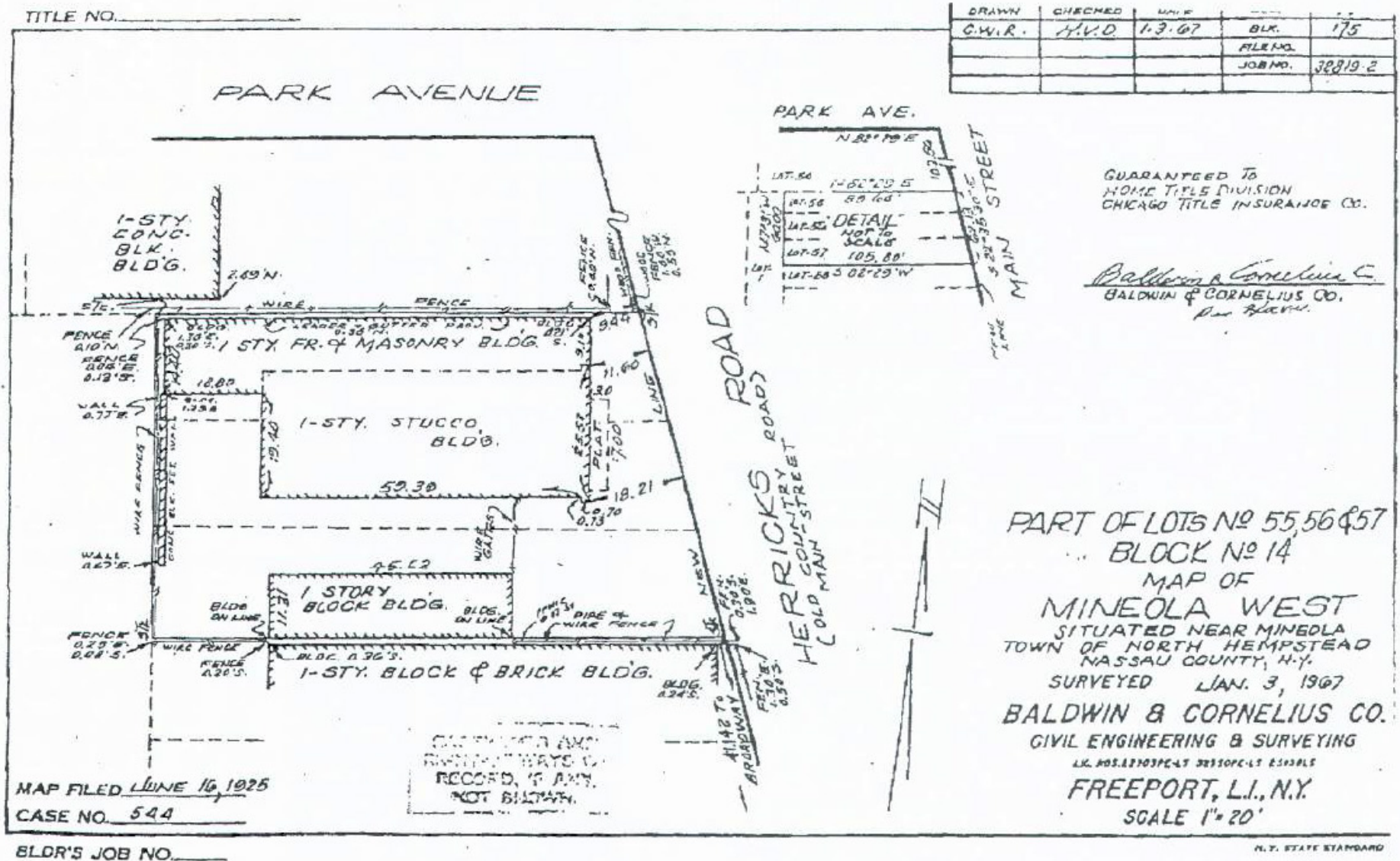


# SURVEY





# SURVEY



# MAP







## CONTACT

ROBERT KUPPERSMITH  
Executive Managing Director  
+1 631 425 1220  
[robert.kuppersmith@cushwake.com](mailto:robert.kuppersmith@cushwake.com)

JENNIFER GRGAS  
Senior Director  
+1 516 398 6375  
[jennifer.grgas@cushwake.com](mailto:jennifer.grgas@cushwake.com)