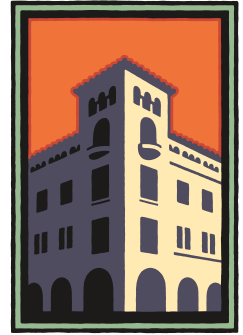


FOR SUBLEASE

451 University Ave, Palo Alto, CA



**PREMIER  
PROPERTIES**  
COMMERCIAL  
REAL ESTATE



## DOWNTOWN PALO ALTO RETAIL BUILDING FOR SUBLEASE

±6,800 SQ. FT. - Available Immediately

LED: July 2027 - Open to Flexible Term

**JACK SPALLINO**  
Broker

Phone: 650.618.3008  
jack.spallino@prprop.com  
dre license #00893230

**JON GOLDMAN**  
Partner

Phone: 650.618.3003  
jon.goldman@prprop.com  
dre license #01295503

**JESSE EBNER**  
Associate

Phone: 650.618.3017  
jesse.ebner@prprop.com  
dre license #02055989

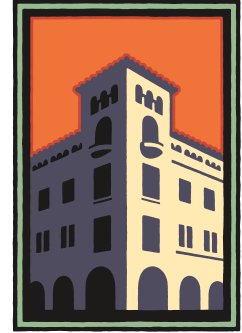
FOR PROPERTY DETAILS AND MORE LISTINGS

[PremierPaloAlto.com](http://PremierPaloAlto.com)

# FOR SUBLEASE

---

451 University Ave, Palo Alto, CA



**PREMIER  
PROPERTIES**  
COMMERCIAL  
REAL ESTATE

## PROPERTY DESCRIPTION

- Excellent Corner Location on University Ave
- ±4,800 SF Street Level & ±2,000 SF Second Level
- Rare Free-Standing Retail Building in Downtown Palo Alto
- Unparalleled Signage Opportunities Across the Street from the Apple Store
- Floor-to-Ceiling Windows and Over 15' Clearance Height
- Large, Open Layout With Additional Second Floor Space
- Partial Second Floor is Elevator-Served
- Surrounded by Public Parking Lots & Downtown Palo Alto Amenities
- LED: July 2027
- Available Immediately For Sublease or Direct Lease

Neither the property owner nor Premier Property Management make any representation or warranty with regard to the information contained within this advertising flyer and the information contained herein should not be relied upon for validity, accuracy, or completeness. Prior to submitting an offer, prospective purchasers or tenants should perform their own due diligence including consultation with their legal and tax counsel in order to arrive at an independent evaluation of the property.

JACK SPALLINO  
Broker

---

Phone: 650.618.3008  
jack.spallino@prprop.com  
dre license #00893230

JON GOLDMAN  
Partner

---

Phone: 650.618.3003  
jon.goldman@prprop.com  
dre license #01295503

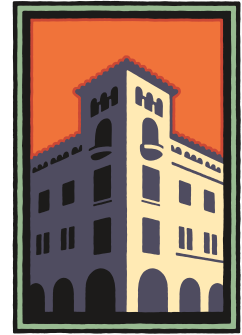
JESSE EBNER  
Associate

---

Phone: 650.618.3017  
jesse.ebner@prprop.com  
dre license #02055989

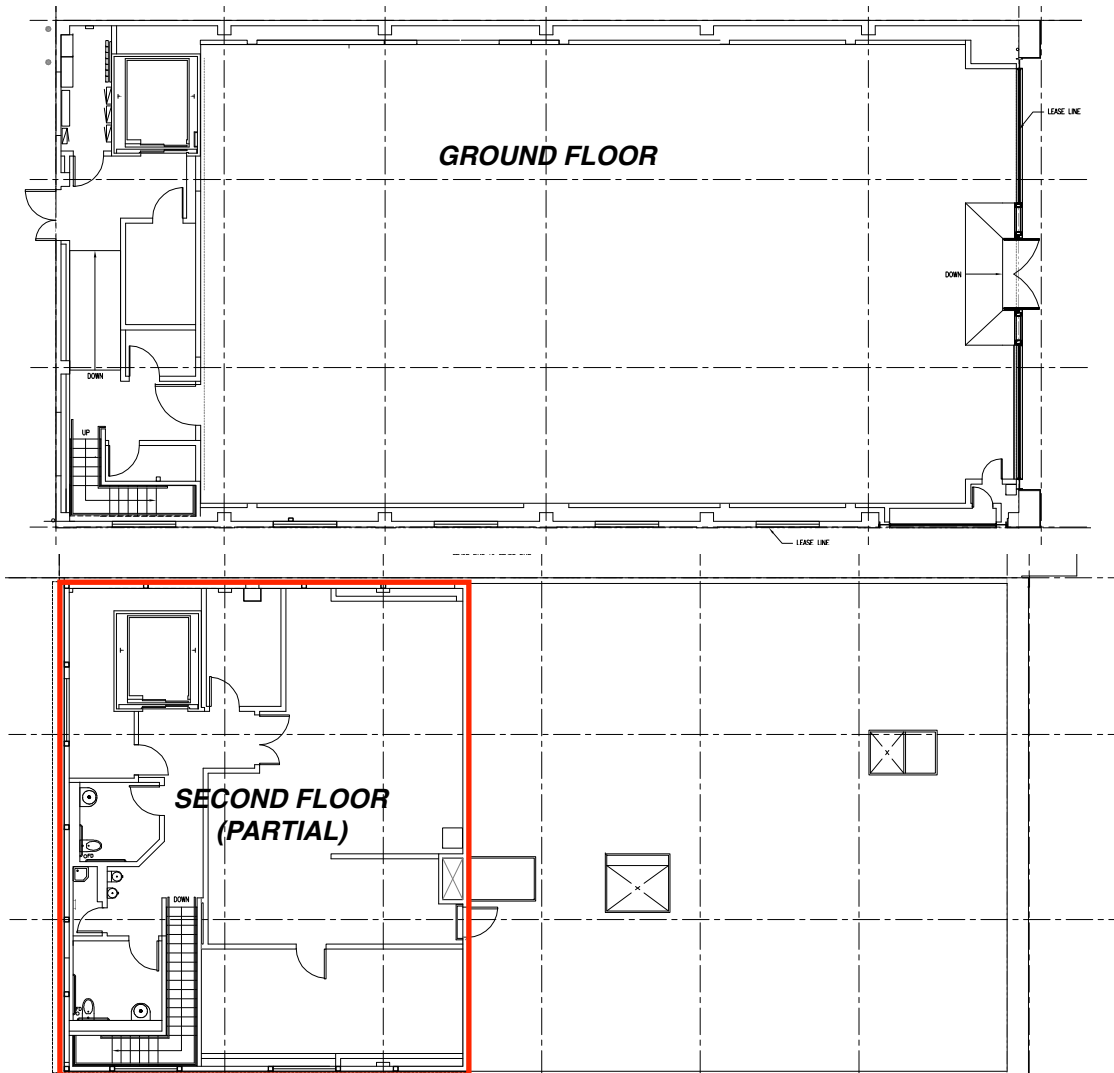
# FOR SUBLEASE

451 University Ave, Palo Alto, CA



**PREMIER  
PROPERTIES**  
COMMERCIAL  
REAL ESTATE

## FLOOR PLAN



May not be accurate / to scale

**JACK SPALLINO**  
Broker

Phone: 650.618.3008  
jack.spallino@prprop.com  
dre license #00893230

**JON GOLDMAN**  
Partner

Phone: 650.618.3003  
jon.goldman@prprop.com  
dre license #01295503

**JESSE EBNER**  
Associate

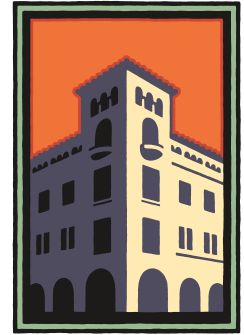
Phone: 650.618.3017  
jesse.ebner@prprop.com  
dre license #02055989

FOR PROPERTY DETAILS AND MORE LISTINGS

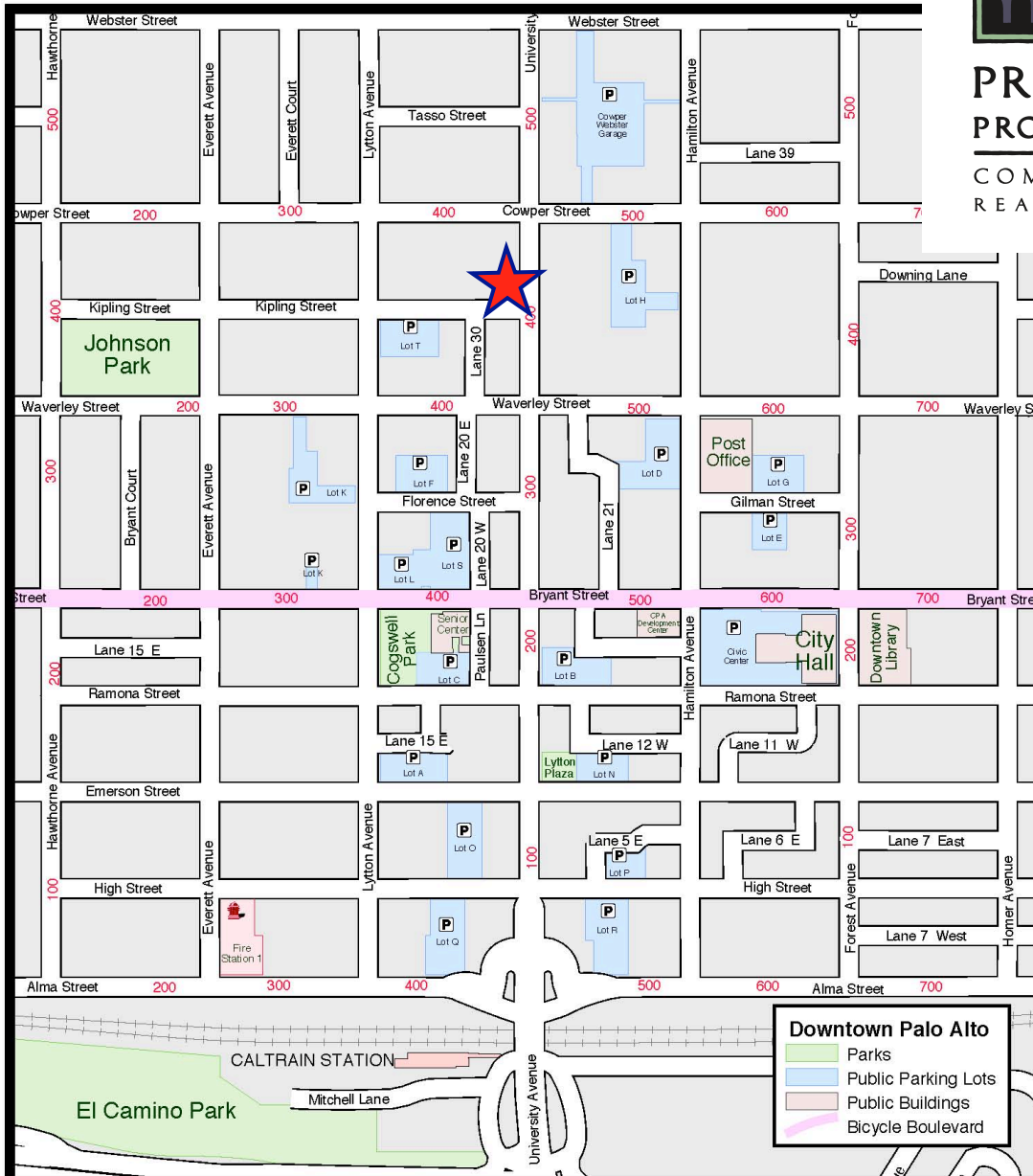
[PremierPaloAlto.com](http://PremierPaloAlto.com)

# FOR SUBLEASE

451 University Ave, Palo Alto, CA



**PREMIER  
PROPERTIES**  
COMMERCIAL  
REAL ESTATE



**JACK SPALLINO**  
Broker

Phone: 650.618.3008  
jack.spallino@prprop.com  
dre license #00893230

**JON GOLDMAN**  
Partner

Phone: 650.618.3003  
jon.goldman@prprop.com  
dre license #01295503

**JESSE EBNER**  
Associate

Phone: 650.618.3017  
jesse.ebner@prprop.com  
dre license #02055989