



OFFERING SUMMARY

Available SF:	1,500 SF or 6,500 SF
Lease Rate:	CALL FOR LEASE RATE NNN
Lot Size:	1.68 Acres
Year Built:	2004
Building Size:	6,528
Zoning:	IL
Market:	Norman
Submarket:	Oklahoma City
Traffic Count:	75,000

PROPERTY OVERVIEW

Industrial/Flex/Office property with 1500 square feet of executive office/showroom available for lease at \$2,500 monthly, or 6,500 SF office/warehouse on 1.68 acres for \$7,500 monthly. Please call for details. The tenant pays all utilities, and maintenance, plus a prorated share of taxes and property insurance.

PROPERTY HIGHLIGHTS

- Modern architecture with striking curb appeal
- Adequate on-site parking for tenants and visitors
- High visibility from Interstate 35
- Efficient and well-designed office layout for optimal functionality
- Proximity to major transportation routes for convenience
- Prominent signage opportunities for business visibility
- Well-maintained and landscaped grounds
- Easily accessible location for added convenience
- Secure and well-lit premises

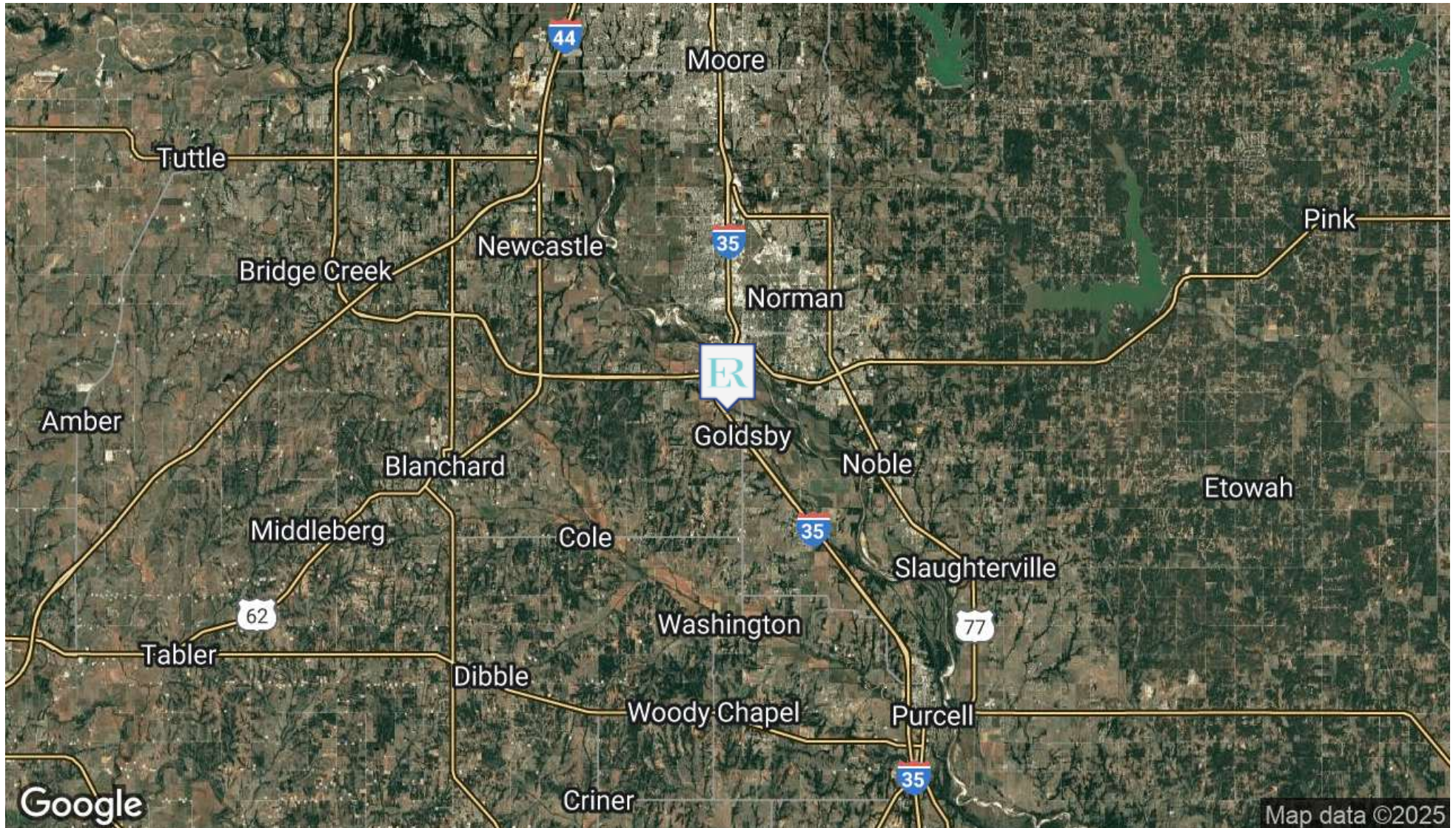
GAYLA ARTMAN

Equity Commercial Realty Advisors, LLC
gartman@equityrealty.net

(405) 826- 7975 cell
(405) 640- 6167 office

1200 W. INTERSTATE DRIVE

1200 W. INTERSTATE DRIVE, GOLDSBY, OK 73072



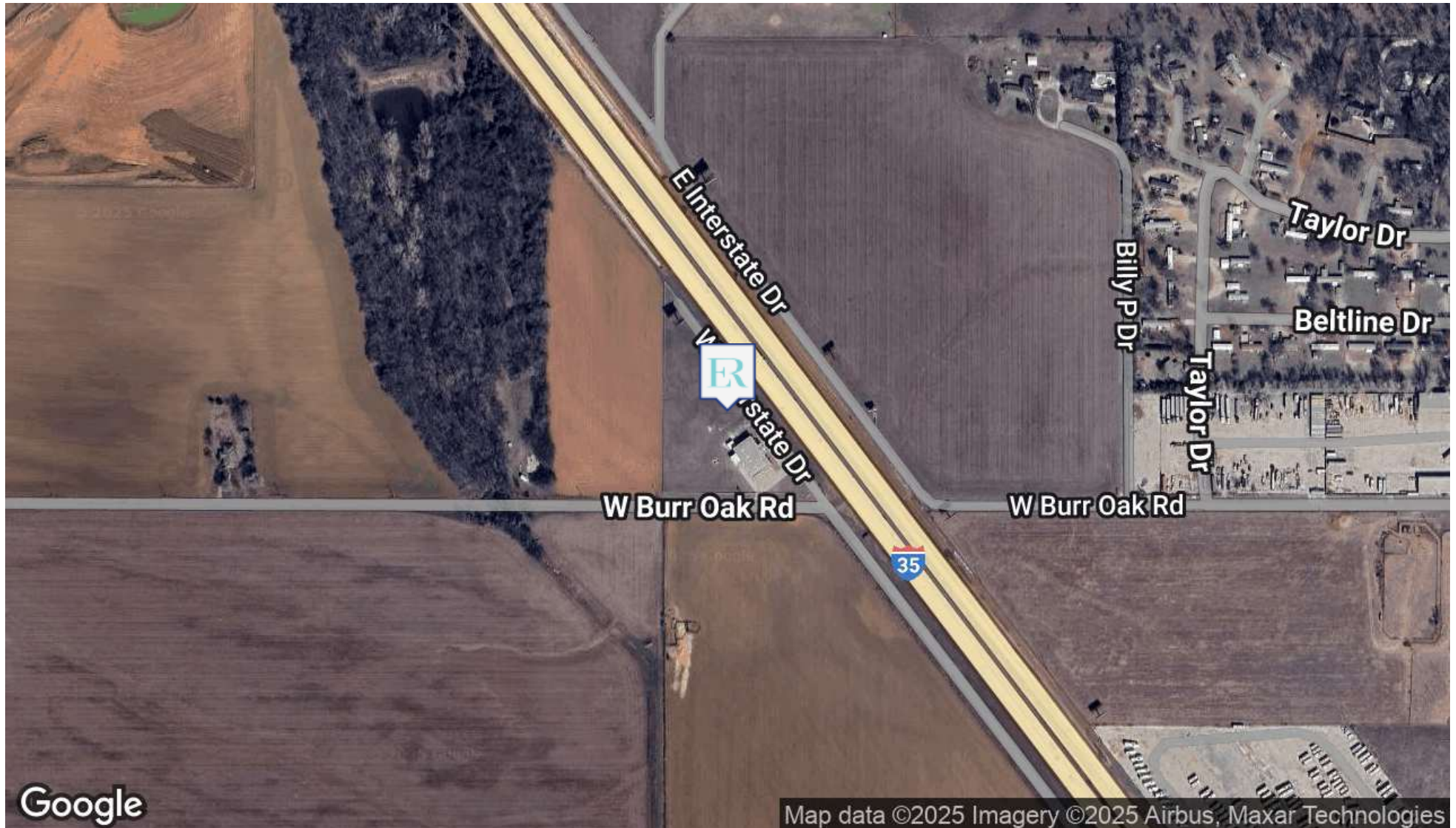
GAYLA ARTMAN

Equity Commercial Realty Advisors, LLC
gartman@equityrealty.net

(405) 826- 7975 cell
(405) 640- 6167 office

1200 W. INTERSTATE DRIVE

GOLDSBY, OK 73072



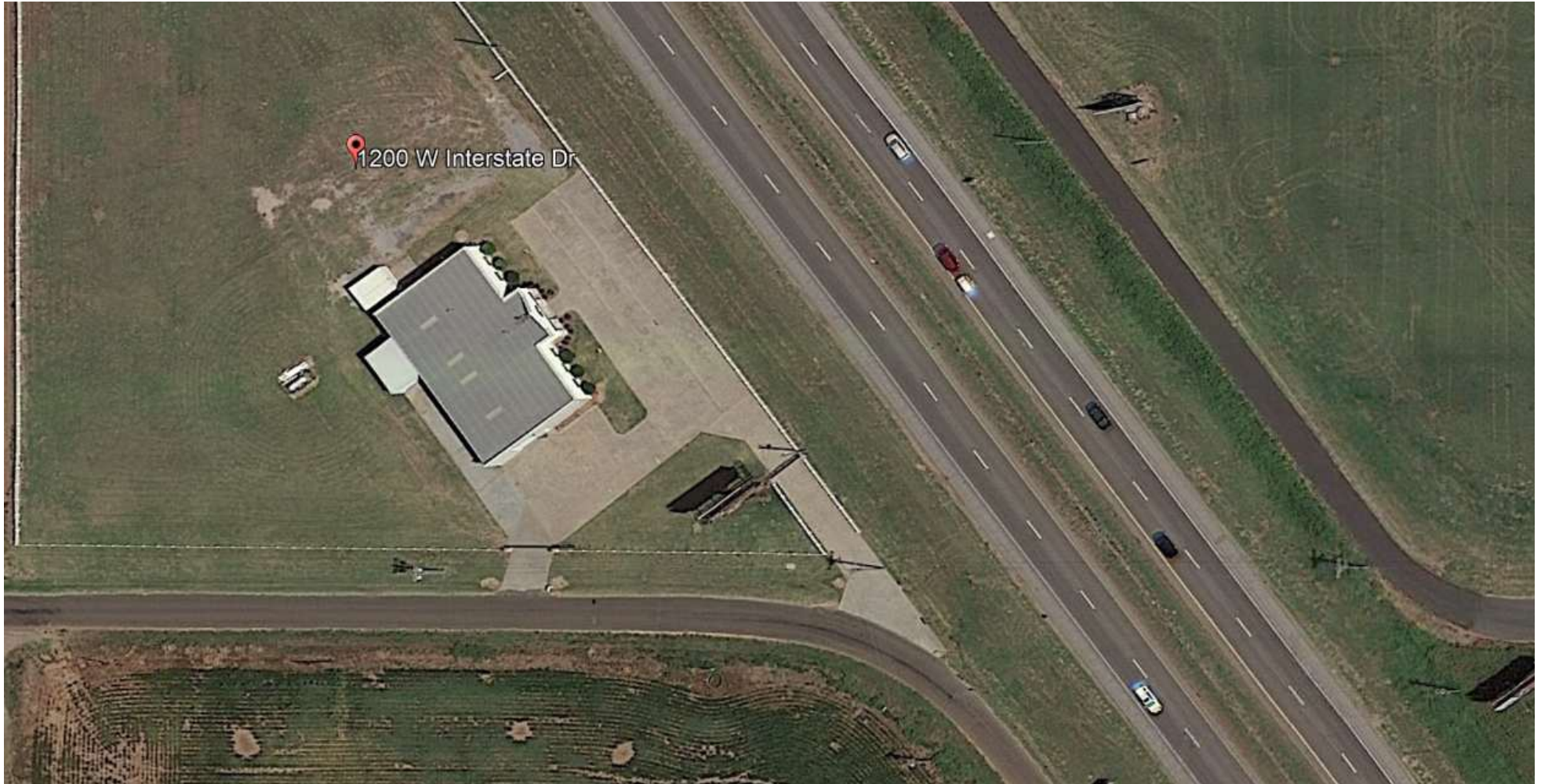
GAYLA ARTMAN

Equity Commercial Realty Advisors, LLC
gartman@equityrealty.net

(405) 826- 7975 cell
(405) 640- 6167 office

1200 W. INTERSTATE DRIVE

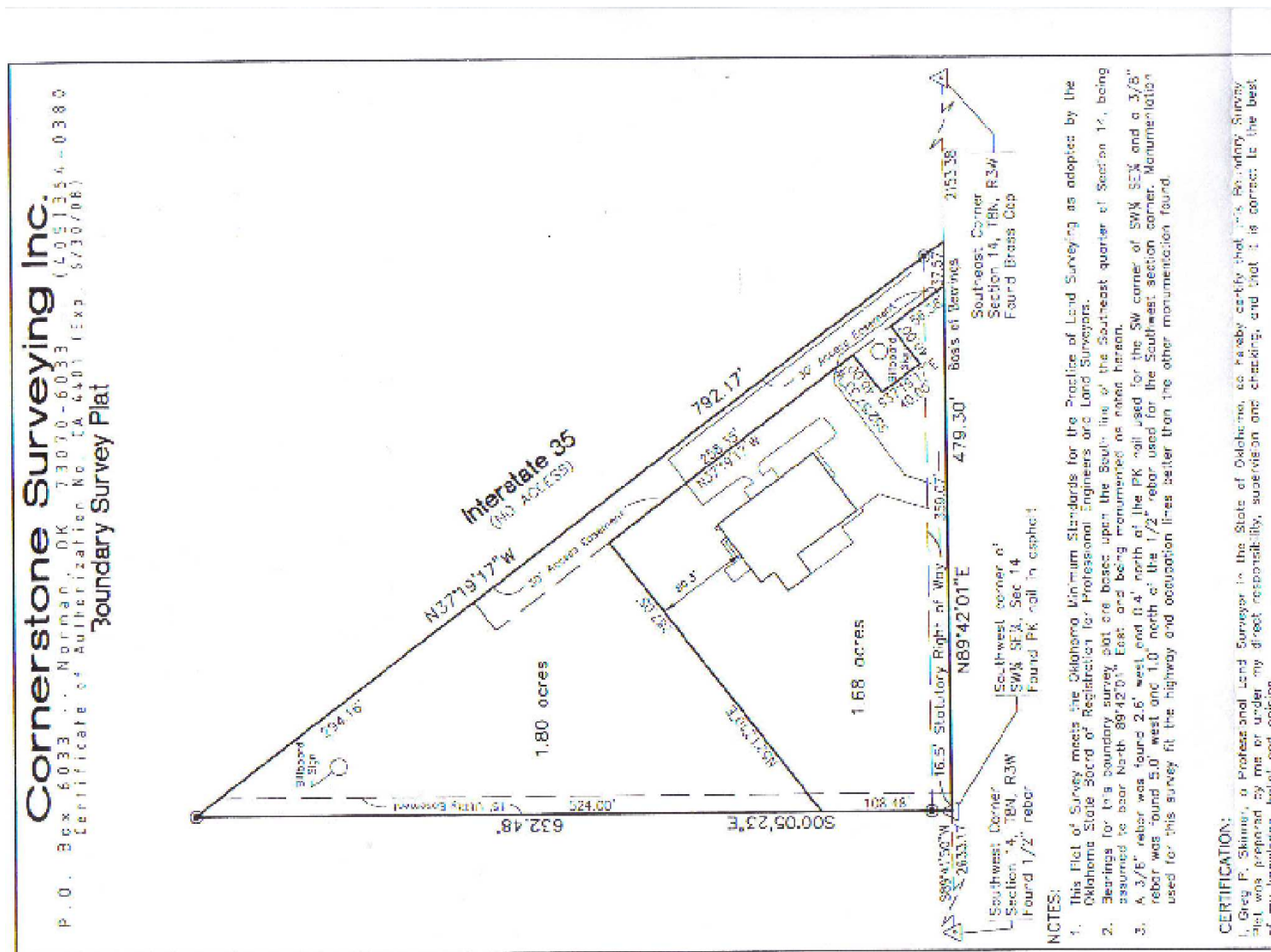
GOLDSBY, OK 73072



GAYLA ARTMAN

Equity Commercial Realty Advisors, LLC
gartman@equityrealty.net

(405) 826- 7975 cell
(405) 640- 6167 office



GAYLA ARTMAN

Equity Commercial Realty Advisors, LLC
gartman@equityrealty.net

(405) 826-7975 cell
(405) 640-6167 office