

SOUTH FORT WORTH COMMERCE CENTER BUILDING 1

AVAILABLE
NOW

FOR LEASE | 90,278 SF AVAILABLE

1021 Everman Parkway, Fort Worth, TX 76140



- New Class-A Warehouse
- I-35W Frontage
- Ideal site for local and regional distribution

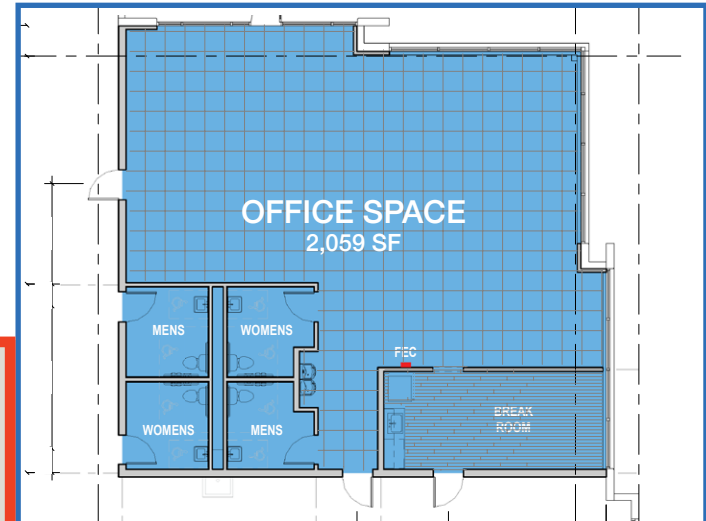
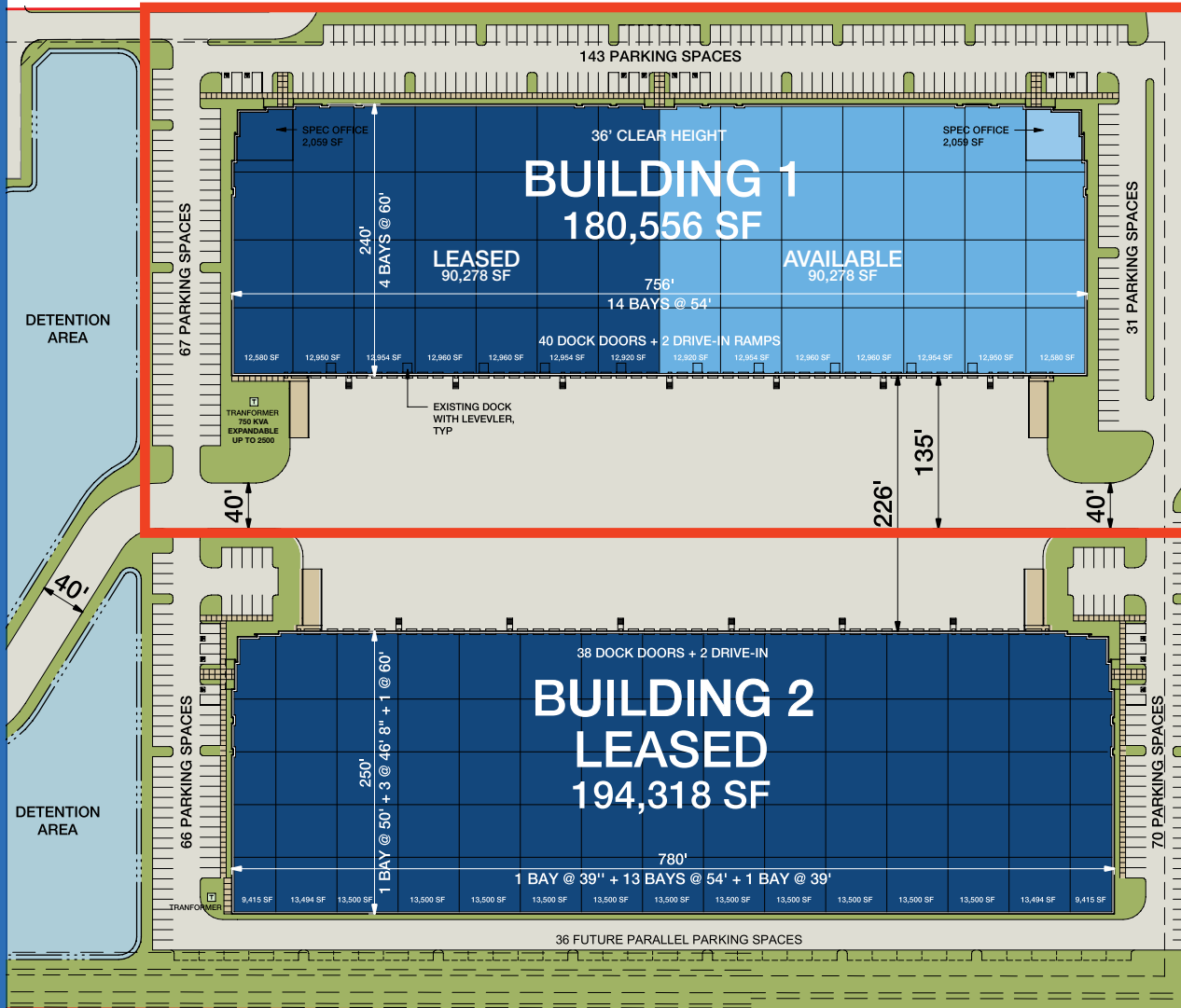


 **IDI Logistics**

 **HOLT LUNSFORD**
COMMERCIAL

AVAILABLE SPACE

90,278 SQUARE FEET



TOTAL BUILDING:	180,556 SF
DIVISIBLE TO:	38,484 SF
CLEAR HEIGHT:	36'
OFFICE AREA:	2,059 SF
DOCKS:	20 (9' x 10')
DRIVE-IN DOORS:	1 (12' x 14')
DOCK EQUIPMENT:	(5) 40,000 lbs. mechanical levelers
AUTO PARKING:	1.34/1,000
TRUCK COURT:	226' (shared)
BUILDING DEPTH:	240'
COLUMN SPACING:	60' x 54'
FIRE PROTECTION:	ESFR with K-22 sprinkler heads
LIGHTING:	LED high bay lights with motion sensors

PARK LOCATION



Fort Worth, Texas

SITE LOCATION



SOUTH FORT WORTH COMMERCE CENTER BUILDING 1

AVAILABLE
NOW

FOR LEASE | 90,278 SF AVAILABLE



For more information, or to set up a tour, please contact:

Matt Carthey
+1.817.710.1111
mcarthey@holtlunsford.com

Canon Shoults
+1.972.280.8328
cschoults@holtlunsford.com

Trey Goodspeed
+1.817.632.6155
tgoodspeed@holtlunsford.com



IDI Logistics is a leading developer and manager of logistics real estate in the U.S. Our fully-integrated logistics platform has a long track record of speculative development, build-to-suits and value-add acquisitions.

We are dedicated to serving our customers with exceptional quality and service.

Tony Maclin
+1.972.560.7009
tony.maclin@idilogistics.com

[Learn More Here](#)

