

# 170 EAST 51<sup>ST</sup>

BETWEEN LEXINGTON & THIRD AVE | MIDTOWN EAST



# 170 EAST 51<sup>ST</sup>

BETWEEN LEXINGTON & THIRD AVE | MIDTOWN EAST

## PROPERTY HIGHLIGHTS

- High ceilings
- Vented space
- Formerly a portion of Treehaus
- Located in a highly dense office neighborhood

### SIZE

Ground Floor 1,353 SF  
Basement 2,041 SF

### FRONTAGE

24'

### POSSESSION

Immediate

### ASKING RENT

Upon Request

### CEILING HEIGHTS

17' 10" on Ground  
11' 3" on Basement

### TRANSPORTATION



### NEIGHBORS



CONTACT OUR BROKERS FOR MORE INFORMATION

**IKE BIBI**

IBibi@ksrny.com

**347.417.2860**

**CAROLINA AZIZ**

CAziz@ksrny.com

**516.640.6961**

AMERICAN KENNELS				
LEZZET fresh&co				
ZARA SEPHORA			<b>QUEENSBORO BRIDGE</b>	
HOTEL 57 NEW YORK				
CONCORDE HOTEL NEW YORK				
LOBSTER CLUB				
THE GRILL				
LE JARDINIER				
LE RELAIS DE VENISE L'ZNTRECOTE				
KABUL HALAL				
PLAYA & BOWLS				

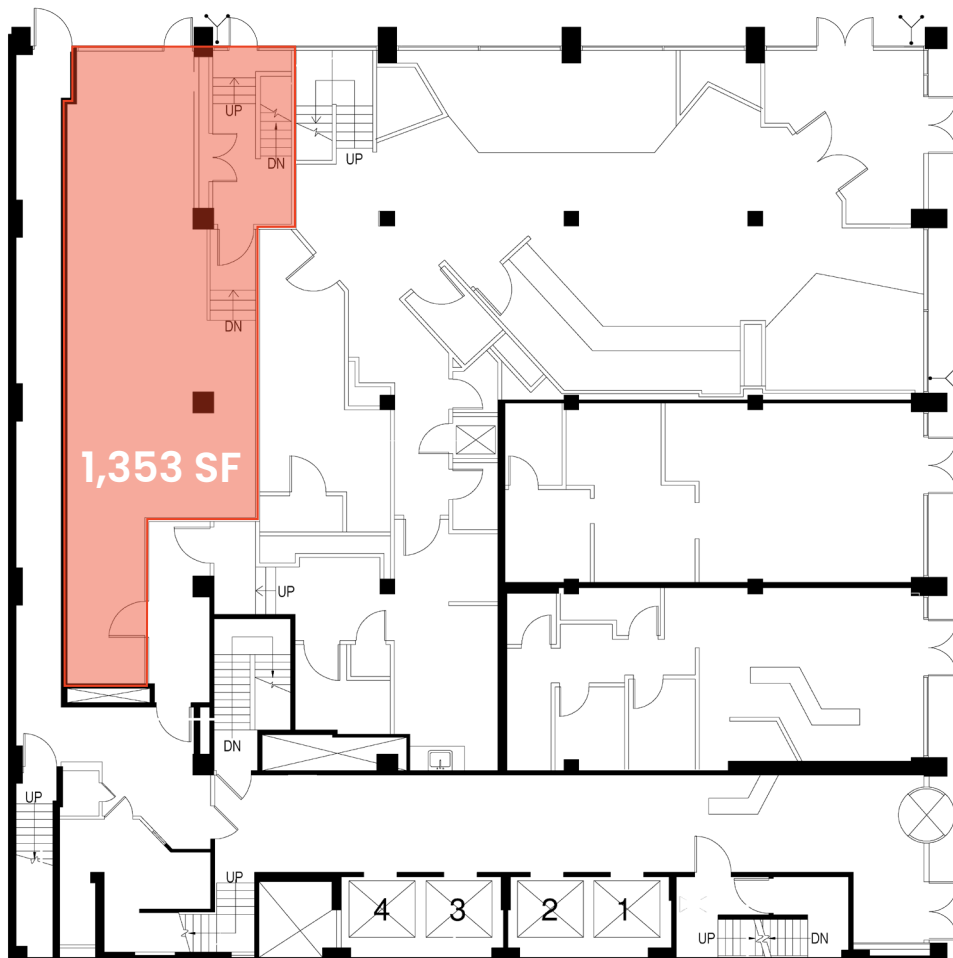
All information supplied in this marketing presentation and/or flyer is from sources deemed reliable and is furnished subject to errors, omissions, modifications, removal of listings from sale/lease and to any listing condition. Any square footage, dimensions, floor plans and/or technical data set forth are approximations and are subject to further elaboration/confirmation.



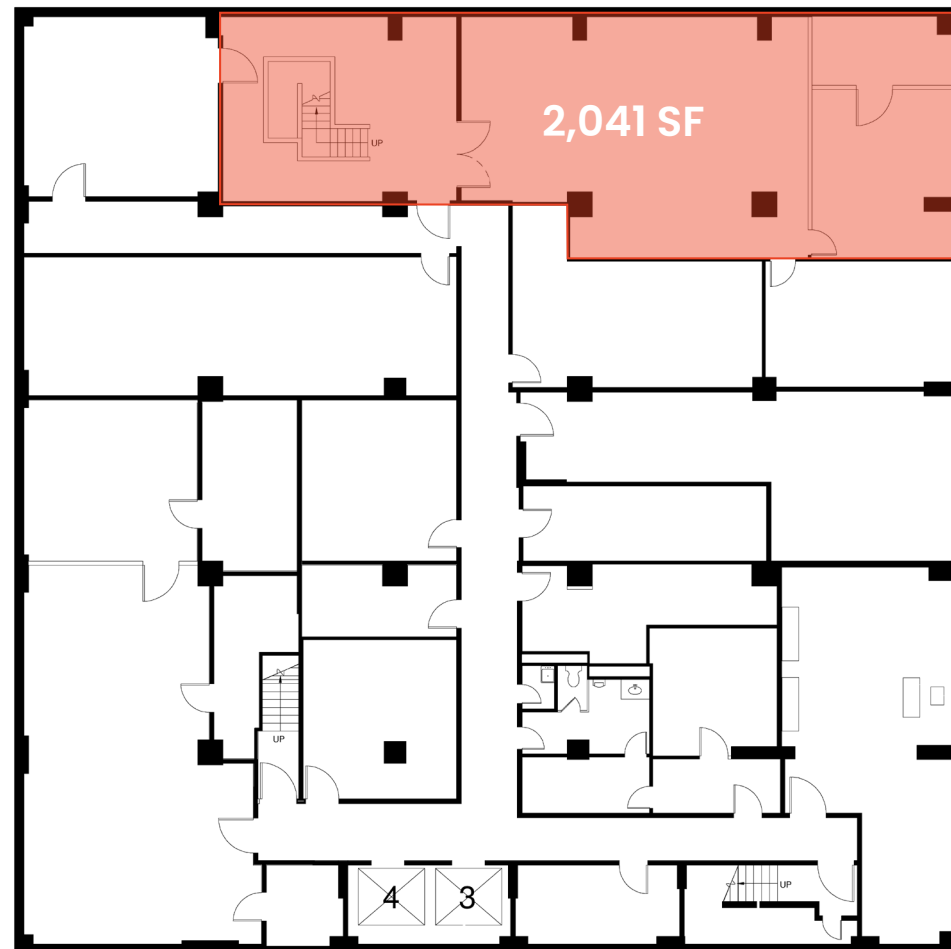
# 170 EAST 51<sup>ST</sup>

BETWEEN LEXINGTON & THIRD AVE | MIDTOWN EAST

GROUND FLOOR



LOWER LEVEL



CONTACT OUR BROKERS FOR MORE INFORMATION

**IKE BIBI**

IBibi@ksrny.com

**347.417.2860**

**CAROLINA AZIZ**

CAziz@ksrny.com

**516.640.6961**

All information supplied in this marketing presentation and/or flyer is from sources deemed reliable and is furnished subject to errors, omissions, modifications, removal of listings from sale/lease and to any listing condition. Any square footage, dimensions, floor plans and/or technical data set forth are approximations and are subject to further elaboration/confirmation.