



2.85 Acres Asking \$1,240,000

Situated just north of the intersection of Williams Drive and Serenada Drive in Georgetown, TX, this tract zoned C-1 Local Commercial is best-suited for medical, office, daycare or retail to complement the surrounding residential, including hundreds of senior living units that are part of The Oscar, The Wesleyan and The Oaks retirement communities. The property is strategically located minutes from IH-35, Highway 29, HEB and Wolf Ranch in the direct path of growth and with easy access to water and wastewater utilities, it is positioned for development now! Surrounding retailers include Tim Horton’s, Commercial National Bank of Brady, Einstein Bagels, Quik Trip , Jersey Mikes, Walgreens, Extra Space Storage, and more.

Dalton Shults

Dalton@QuestRealtyAustin.com

512.925.8077

John Cummings

John@QuestRealtyAustin.com

512.415.8508

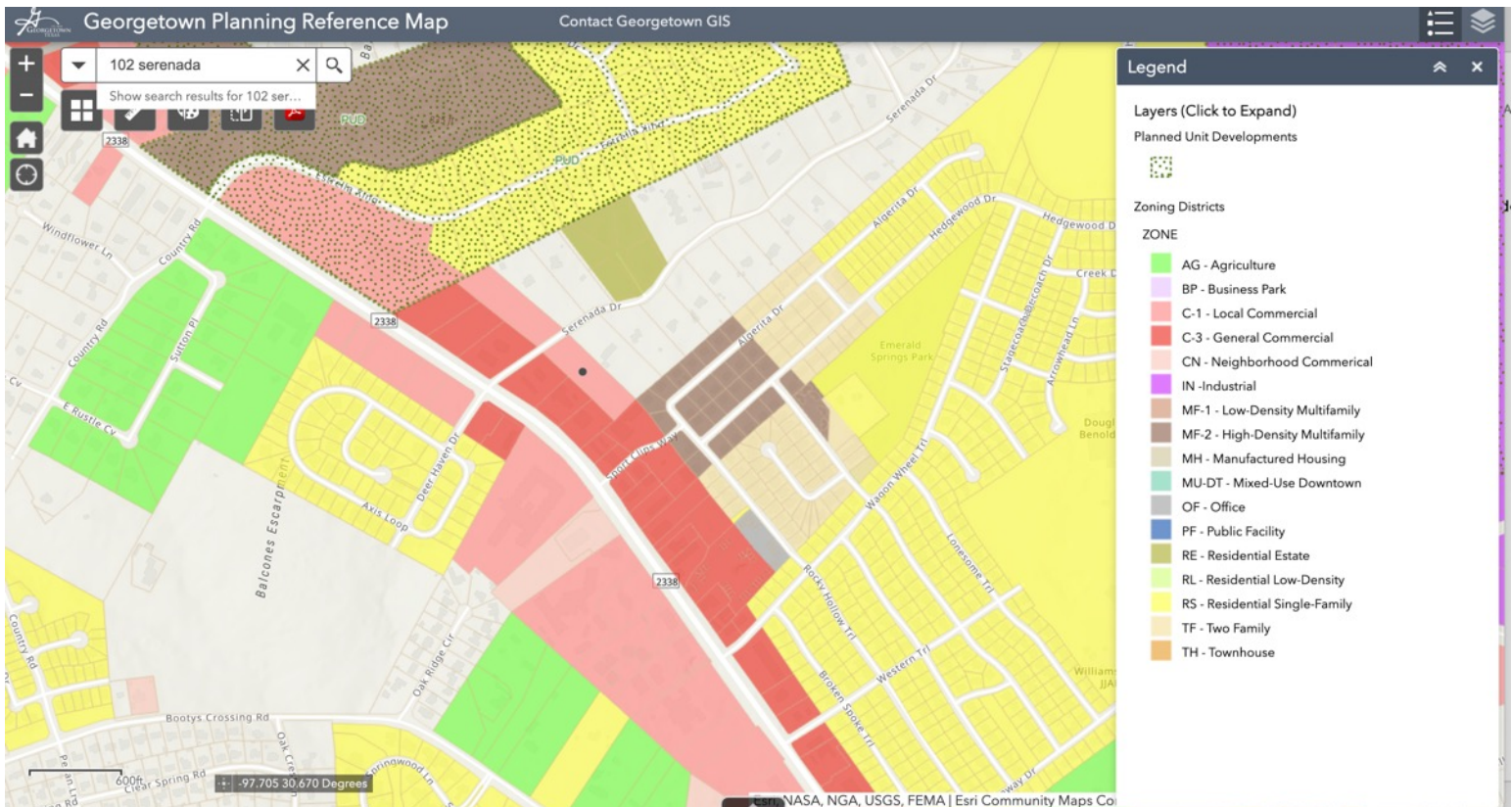
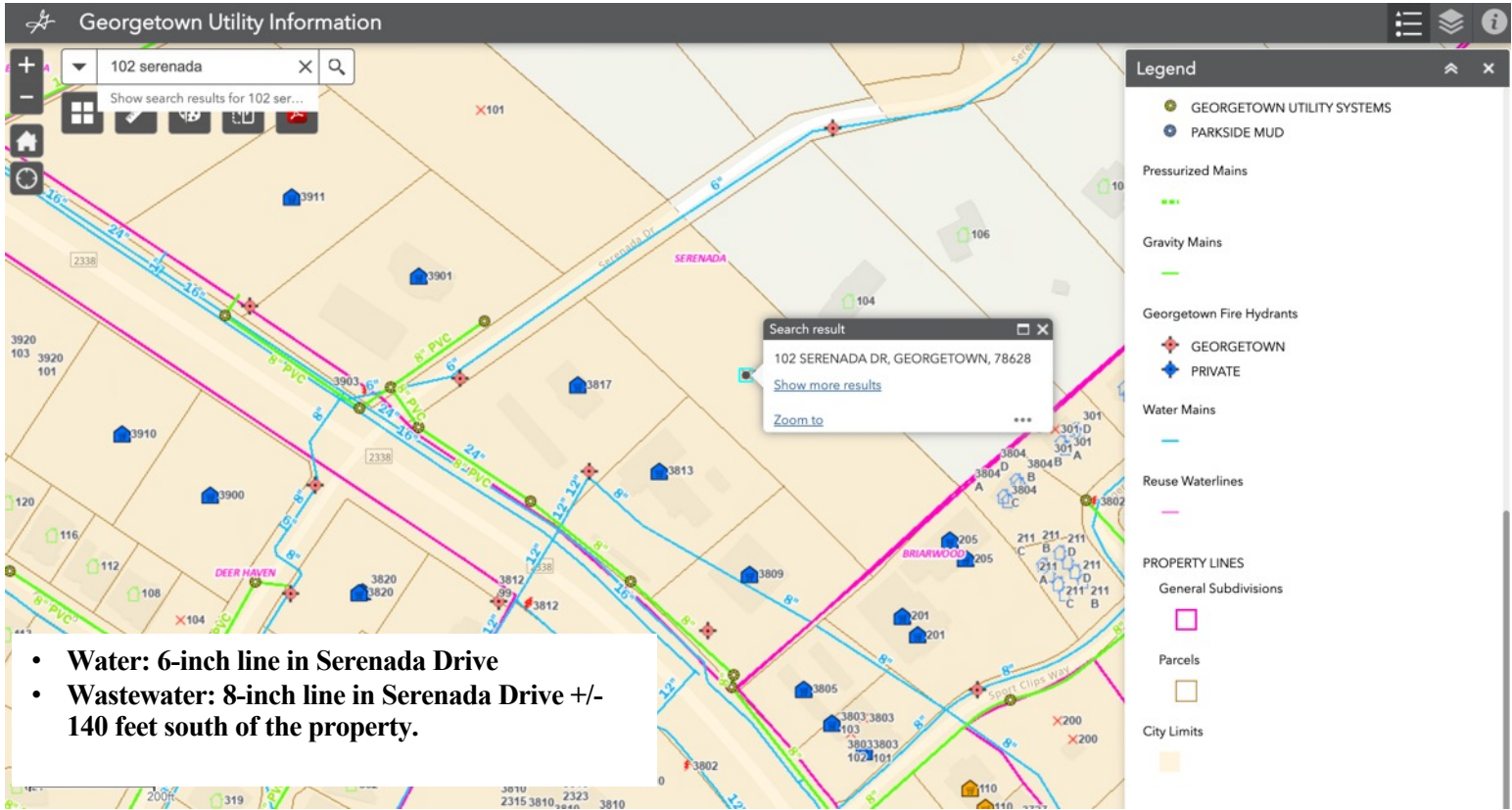


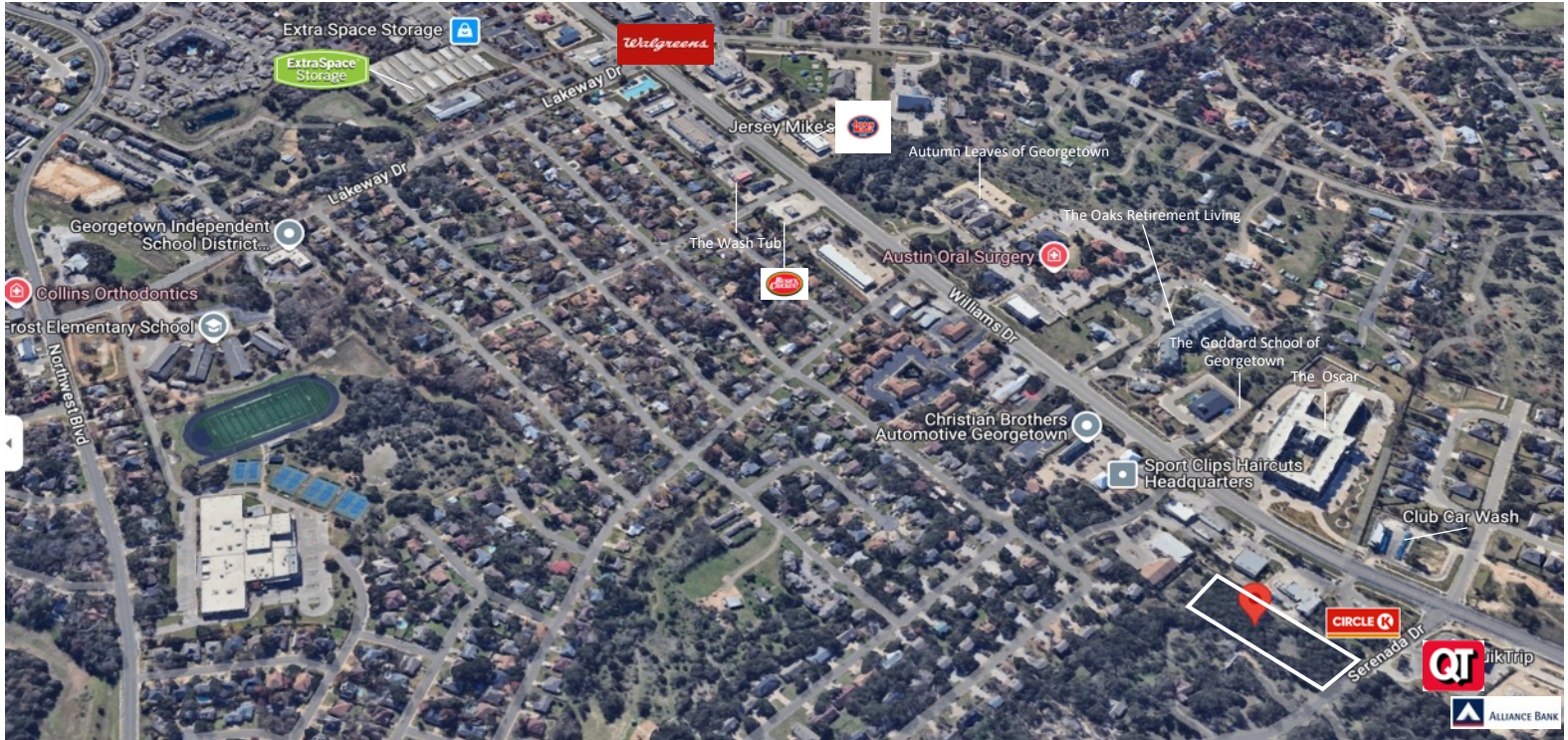


Facts

- Address: 102 Serenada Drive, Georgetown, TX 78628
- Legal address: SERENADA COUNTRY ESTATES, LOT 8, ACRES 2.85
- Owner: Rana Satyendra
- Zoning: C-1 Local Commercial, which is intended to provide areas for commercial and retail activities that primarily serve residential areas. Uses should have pedestrian access to adjacent and nearby residential areas, but are not appropriate along residential streets or residential collectors. The district is more appropriate along major and minor thoroughfares and corridors.
- [Link to Georgetown Permitted Use Chart](#)
- Front setback: 25 feet from Serenada Drive
- Side setback: 10 feet (15 feet on the northern side next to single-family). Could potentially get away with 10 since I don't think that property north of you is inside the City limits.
- Rear setback: 0 feet. The Property backs up to commercial.
- Max height: 35 feet
- Impervious cover: This property appears to be in the Edwards Aquifer Recharge zone, which per code, should limit the impervious cover for development to 70% because we are less than five acres.
- Utilities: Georgetown water, wastewater and electric.

Utilities and Zoning





Dalton Shults

[**Dalton@QuestRealtyAustin.com**](mailto:Dalton@QuestRealtyAustin.com)

512.925.8077

John Cummings

[**John@QuestRealtyAustin.com**](mailto:John@QuestRealtyAustin.com)

512.415.8508





[Link: Commons at Rivery 14-Acre Mixed-Use](#)

Commons at Rivery under construction now on Williams Drive with an expected completion date for 2025. Phase one includes almost 25K SF of retail, 336 MF units and 75K SF of office transforming McCoy Elementary into a walkable, urban development.



[Link: Luxury Senior Living Coming Soon on Williams Drive](#)

The Oscar at Georgetown totaling approximately 230,000 square feet is now completed. Residents will have access to on-site restaurants, extensive amenities, activities and options for assisted living and memory care. This project will bring a huge demand for medical services!



[Link: Sun City Promotes Continued Growth](#)

Sun City, the 7,000-acre 55 and up active living community developed by Del Webb, now accounts for 20% of Georgetown's overall population. With a higher average age for residents, there is a significant need in the City for increased medical providers to cater to these 8,500 homes and 15,700 residents.



[Link: HEB Breaks Ground on Williams Drive HEB](#)

HEB under construction for their third store in Georgetown at Williams Drive and Ronald Reagan. There is also a 117,000 square foot HEB at Wolf Lakes and a store on Williams Drive about a mile north of the Serenada site.



[Link: GTX Breaks Ground on Building 2](#)

Over 400,000 under construction now at the GTX Logistics Park to join Building 1 located east of IH-35 off 972.



[Link: Crosspoint Business District](#)

Jackson-Shaw announces they have closed on 224 acres on IH-35 north of 195 for a new business district, which will be a combination of industrial, commercial and multifamily. 204,000 square feet of Phase I has been leased to Onx Homes, which will serve as their regional office for the Austin area.



[Link: More Companies Flock To Georgetown](#)

CellLink, an electronics company who is a leader in 3D Bioprinting, has announced they will be building a facility of almost 300,000 square feet at Titan Gateway35's industrial park located near the intersection of IH-35 and 130.



[Link: Wolf Lakes Mixed-Use](#)

Wolf Lakes is a one-of-a-kind 164-acre mixed-use development located at IH-35 and Highway 29. Ascension Seton is in the process of building a 40,000-60,000 square foot medical office here along with multifamily, a cinema, restaurants, retail, hotels, hike and bike trails and an outdoor entertainment venue.



