

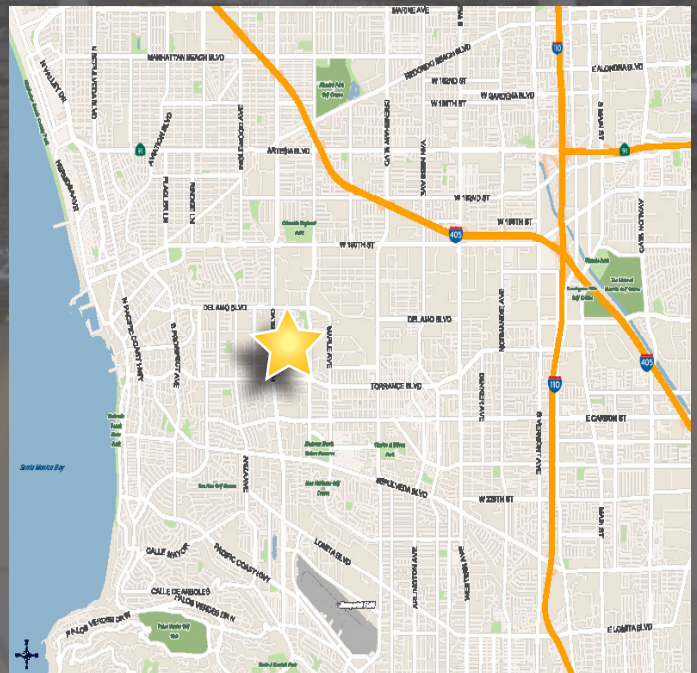


## 2610 Columbia Street Unit B Torrance, CA 90503

- Central Torrance Location
- Like New Building Exterior
- High efficiency T-5 Lighting in Warehouse
- Completely Remodeled Interior Offices
- Upgraded ESFR Sprinklers
- Secure Fencing Available
- U.S. Hybrid Space
- 3 DH / 1 GL Truck Doors
- Power - 200 Amps
- Professionally Owned & Managed by  
First Industrial Realty Trust

### Highlights

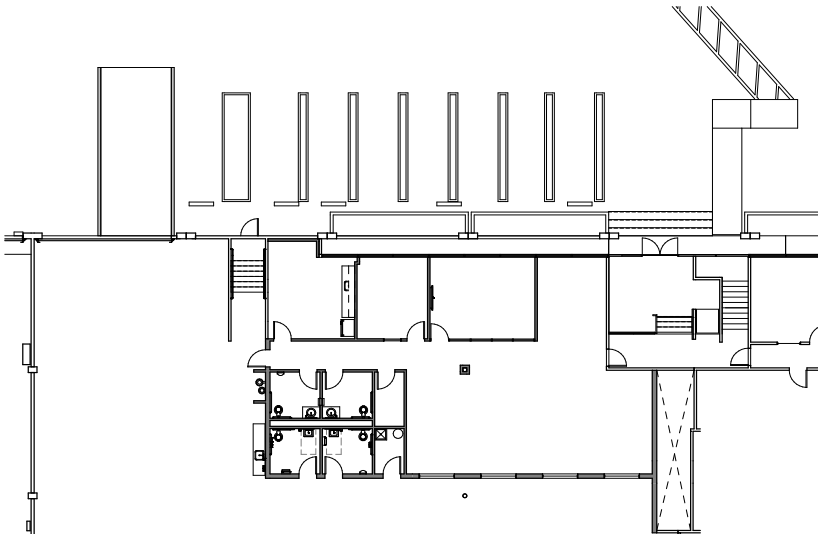
<b>Available Space:</b>	22,595 SF
<b>Building SF:</b>	100,778 SF
<b>Office Space:</b>	± 2,753 SF
<b>Clear Height:</b>	20'
<b>Loading Doors:</b>	3 DH / 1 GL
<b>Parking Ratio:</b>	TBD
<b>Power:</b>	400 Amps 277- 400 Volts





# 2610 Columbia Street Unit B Torrance, CA 90503

## Site Plan



### SUITE B

PROPOSED OFFICE: 2,753 SF

EXISTING WAREHOUSE: 19,872 SF  
TOTAL: 22,595 SF

## Broker Contact:

### **JEFF SMART**

*Senior Executive Vice President*

License No. 00918873

+1 310 321 1812

jeffrey.smart@colliers.com

### **ELIZABETH CAPATI**

*Senior Associate*

License No. 02109628

+1 310 321 1855

elizabeth.capati@colliers.com

2141 Rosecrans Avenue  
Suite 1120  
El Segundo, CA 90245  
www.colliers.com



## Owner Contact:

### **JERRY DEVON**

*Marketing & Leasing Director*

898 N.Pacific Coast Highway | Suite 175

El Segundo, CA 90245

Direct: +1 (424) 220-9212

gdevon@firt.com



**FIRST**  
INDUSTRIAL  
REALTY • TRUST

www.firstindustrial.com

All information furnished regarding the property for sale, rental or financing is obtained from sources deemed reliable. No representation is made to the accuracy thereof and is submitted subject to errors, omissions, change of price rental or other conditions, prior sale, lease, or financing, or withdrawal without notice. First Industrial Realty Trust, Inc. represents the Seller in this transaction and as such owes all duties and obligations