

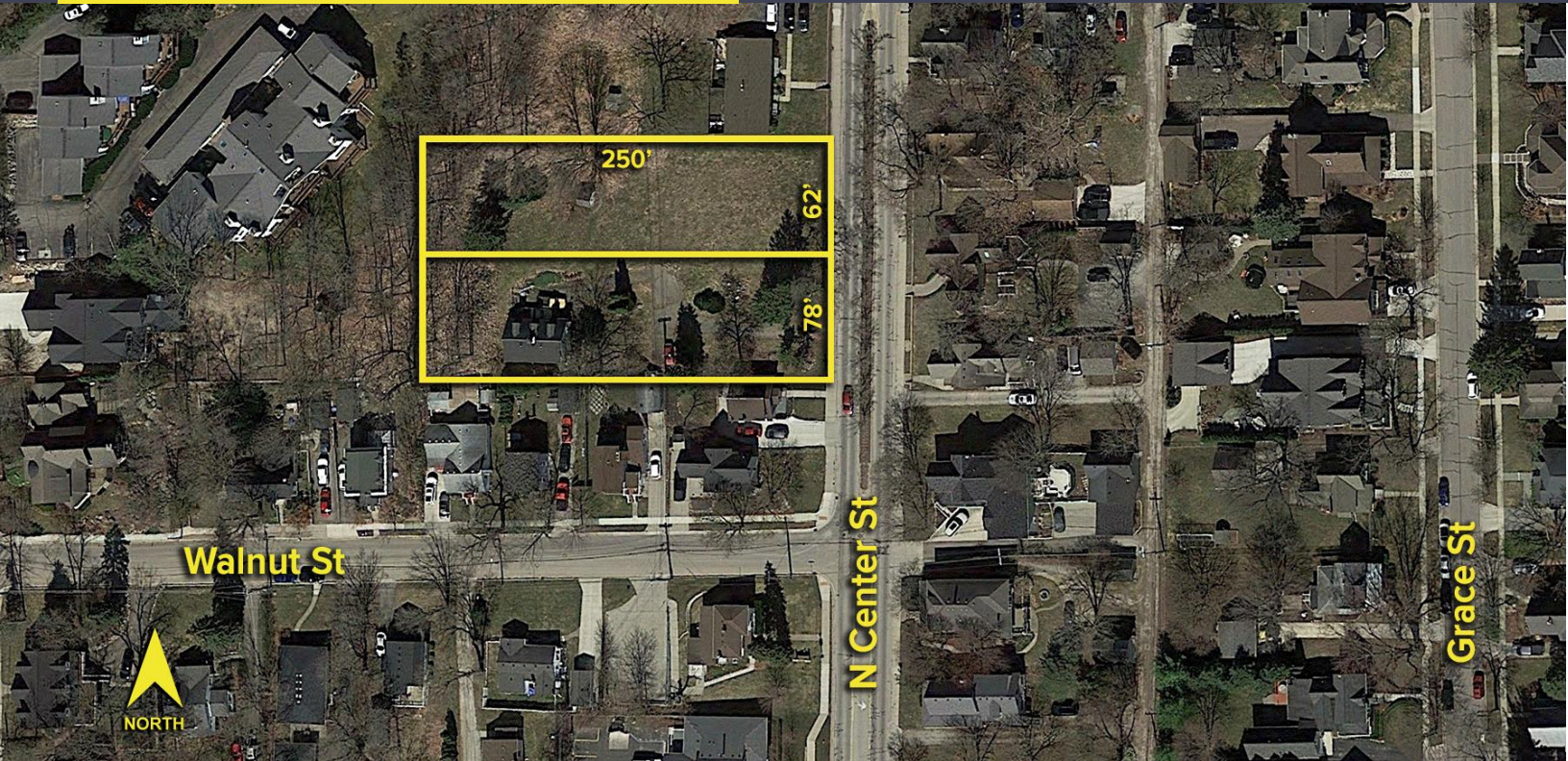
635 CENTER ST
NORTHVILLE, MICHIGAN

VACANT LAND FOR SALE
0.804 Acres Available



**SIGNATURE
ASSOCIATES**
KNOW SIGNATURE | KNOW RESULTS

RESIDENTIAL LAND



PROPERTY FEATURES

- 0.804 acres available
- Prime Downtown Northville land for redevelopment
- Two lots totaling approx. 35,000 square feet
- Zoned R-2
- Could be used for single family or multi-family residential (second density residential)
- Utilities at site
- Located just north of Kroger and Red Dot Coffee
- 140' of frontage on Center Street
- Sale Price: \$650,000



For more information, please contact:

JASON STOUGH

(248) 948 4180

jstough@signatureassociates.com

SIGNATURE ASSOCIATES

One Towne Square, Suite 1200

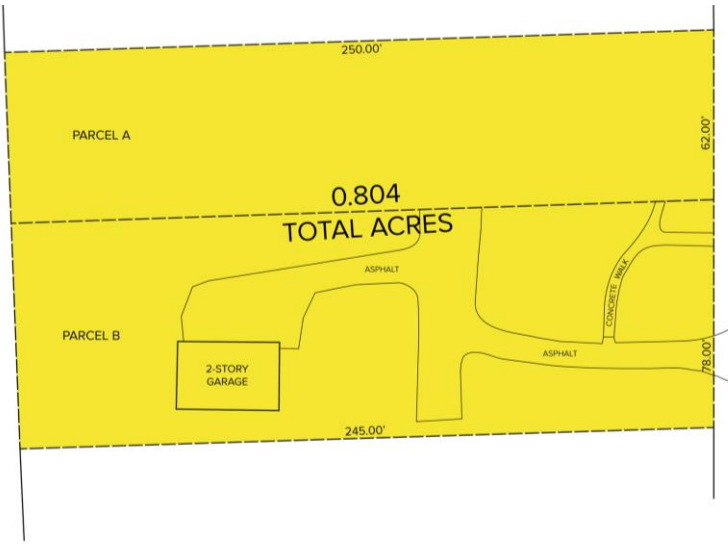
Southfield, MI 48076

www.signatureassociates.com

635 Center Street – Northville, Michigan

Land For Sale

0.804 acres
AVAILABLE



DEMOGRAPHICS

	POPULATION	MED. HH INCOME
1 MILE	9,626	\$124,606
3 MILE	64,650	\$151,428
5 MILE	147,993	\$131,286

TRAFFIC COUNTS (TWO-WAY)

21,521	Center St. of 8 Mile Rd.
11,843	8 Mile Rd. W. of Center St.
14,823	8 Mile Rd. E. of Center St.



For more information, please contact:
JASON STOUGH
 (248) 948 4180
 jstough@signatureassociates.com

SIGNATURE ASSOCIATES
 One Towne Square, Suite 1200
 Southfield, MI 48076
 www.signatureassociates.com

Information is subject to verification and no liability for errors or omissions is assumed. Price is subject to change and listing withdrawal.