



JOHN STANLEY
&
ASSOCIATES

COMMERCIAL REAL ESTATE



HALCYON POINTE - Building I
7515 Halcyon Summit Drive
Montgomery, AL 36117

FOR LEASE

- **± 24,772 RSF (ALL OR PART)**
 - Suite 100: ± 4,571 RSF
 - Suite 101: ± 4,801 RSF
 - Suite 102: ± 5,235 RSF
 - Suite 107: ± 1,265 RSF
 - Suite 303: ± 3,464 RSF
 - Suite 305: ± 4,565 RSF
 - Suite 307: ± 871 RSF
- **\$21/RSF (FULL SERVICE RATE)**
- **LEASE TERM: THREE (3) YEAR MINIMUM**
- **TENANT IMPROVEMENTS: NEGOTIABLE**
- **OCCUPANCY: IMMEDIATE**

Halcyon Pointe, Building I, a class "A" Office Building is developed on a wooded 15.5 acres site, with convenient access to Taylor Road & I-85 (Exit 9), Montgomery, AL. Current tenants include Home Builders Association of Alabama, Morgan Stanley Smith Barney, Alabama Tax Tribunal, and Caliber Home Loans, Inc. Contact John Stanley, CCIM, for more information at (334) 271-2475. Shown by appointment only.



John C. Stanley, CCIM
John Stanley & Associates, Inc.
4747 Woodmere Boulevard
Montgomery, AL 36106
(334) 271-2475 voice
(334) 271-2421 fax
jstanley@johnstanleyassociates.com
www.johnstanleyassociates.com



All information is from sources deemed reliable, but no warranty is made as to the accuracy thereof and same is submitted subject to errors, omissions, change of price, or other conditions, such as prior sales or withdrawal without notice by John Stanley & Associates, Inc. or the Owner.

05/24/18



HALCYON POINTE I TENANT SPACE 100

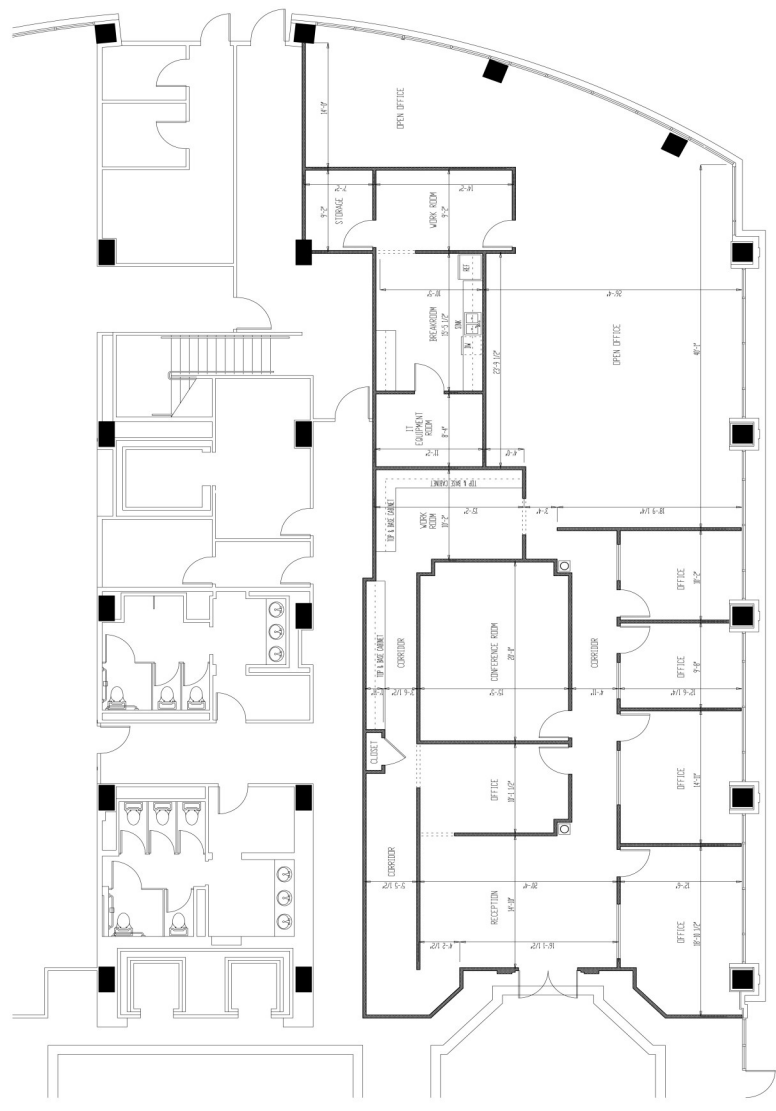
7513 HALCYON ALABAMA DRIVE
MONTGOMERY ALABAMA 36117

SHEET TITLE
SUITE 100 LEASE PLAN

PROJECT NUMBER HALC
FILE NUMBER AL
DATE MAY 09, 2006
REVISION

THIS DOCUMENT IS THE PROPERTY OF THE ARCHITECT AND IS TO BE USED AS A GUIDE FOR CONSTRUCTION ONLY.

SHEET NUMBER
L100

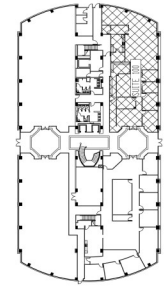


SUITE 100 LEASE PLAN

SCALE: 3/16" = 1'-0"

USABLE SQUARE FOOTAGE: 3,962 SF

RENTABLE SQUARE FOOTAGE: 4,571 SF



KEY PLAN

HALCYON POINTE I TENANT SPACE 101

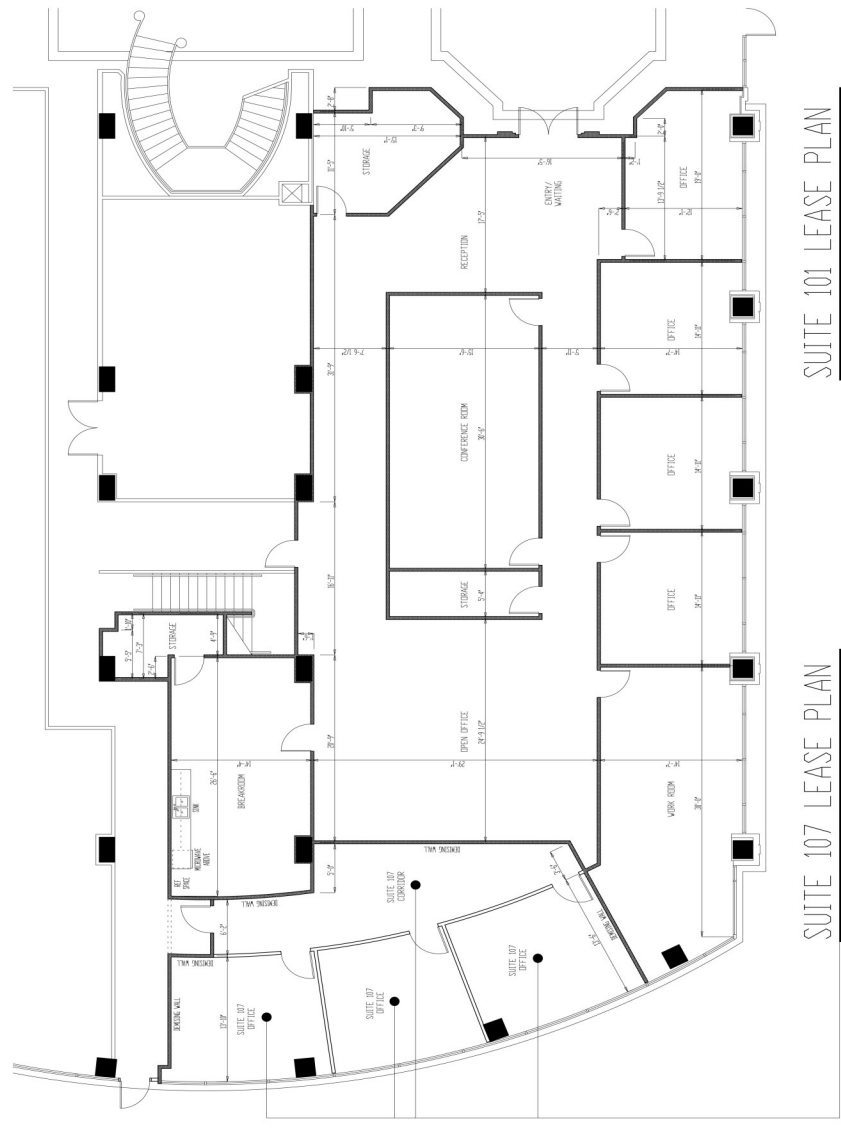
2015 HALCYON SUMMIT DRIVE
MONTGOMERY ALABAMA 36117

SHEET TITLE
202 CUSTOM ANEX
LIFT FLOORS PLAN

PROJECT NUMBER: HALC
FILE NUMBER: AL
DATE: MAY 09, 2016
REVISION:

THIS DRAWING IS TO BE USED AS A GUIDE FOR CONSTRUCTION ONLY.

SHEET NUMBER
L101

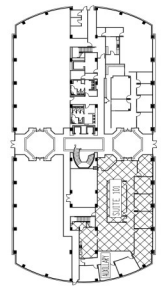


SUITE 101 LEASE PLAN

SCALE: 3/16" = 1'-0"
USABLE SQUARE FOOTAGE: 4,162 SF
RENTABLE SQUARE FOOTAGE: 4,801 SF

SUITE 107 LEASE PLAN

SCALE: 3/16" = 1'-0"
USABLE SQUARE FOOTAGE: 1,096 SF
RENTABLE SQUARE FOOTAGE: 1,265 SF



KEY PLAN

HALCYON POINTE I TENANT SPACE 102

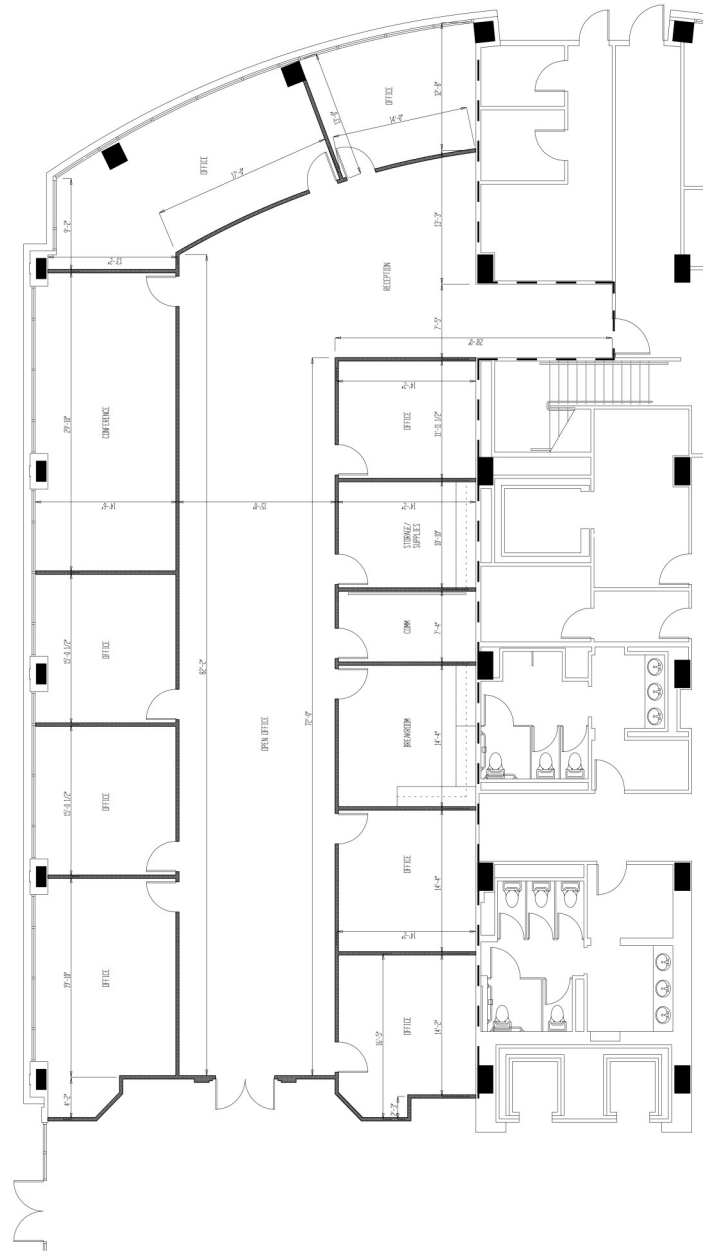
7515 HALCYON SUMMIT DRIVE
MONTGOMERY ALABAMA 36117

SHEET TITLE
SUITE 102 LEASE PLAN

PROJECT NUMBER HALC3
FILE NUMBER A20
DATE JAN 25, 2018

REVISION
DRAWING NOT INTENDED TO BE A SPECIFICATION TO BE USED AS A GUIDE FOR CONSTRUCTION ONLY.

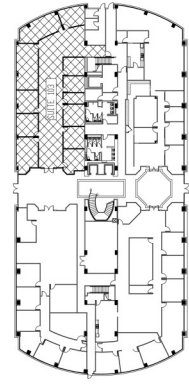
SHEET NUMBER
L102



SUITE 102 LEASE PLAN

SCALE: 3/16" = 1'-0"

USABLE SQUARE FOOTAGE: 4,538 SF
RENTABLE SQUARE FOOTAGE: 5,235 SF



KEY PLAN

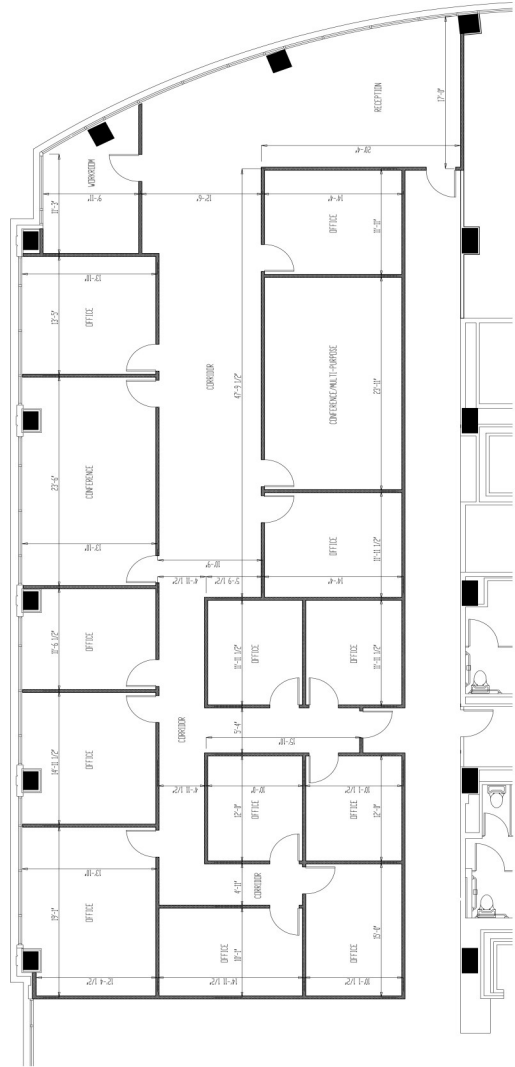
HALCYON POINTE I
 TENANT SPACE 305
 MONSIEUR HALCYON ALABAMA DRIVE
 MONTGOMERY ALABAMA 36117

SHEET TITLE
 SUITE 305 LEASE PLAN

PROJECT NUMBER HALC
 FILE NUMBER R005
 DATE SEPT 12 2007
 REVISION

REMARKS: ALL FINISHES
 TO BE A SPECIFICATION TO
 BE USED AS A GUIDE FOR
 CONSTRUCTION ONLY.

SHEET NUMBER
 L305



SUITE 305 LEASE PLAN

SCALE: 3/16" = 1'-0"

RENTABLE SQUARE FOOTAGE 4,565 SF



KEY PLAN

