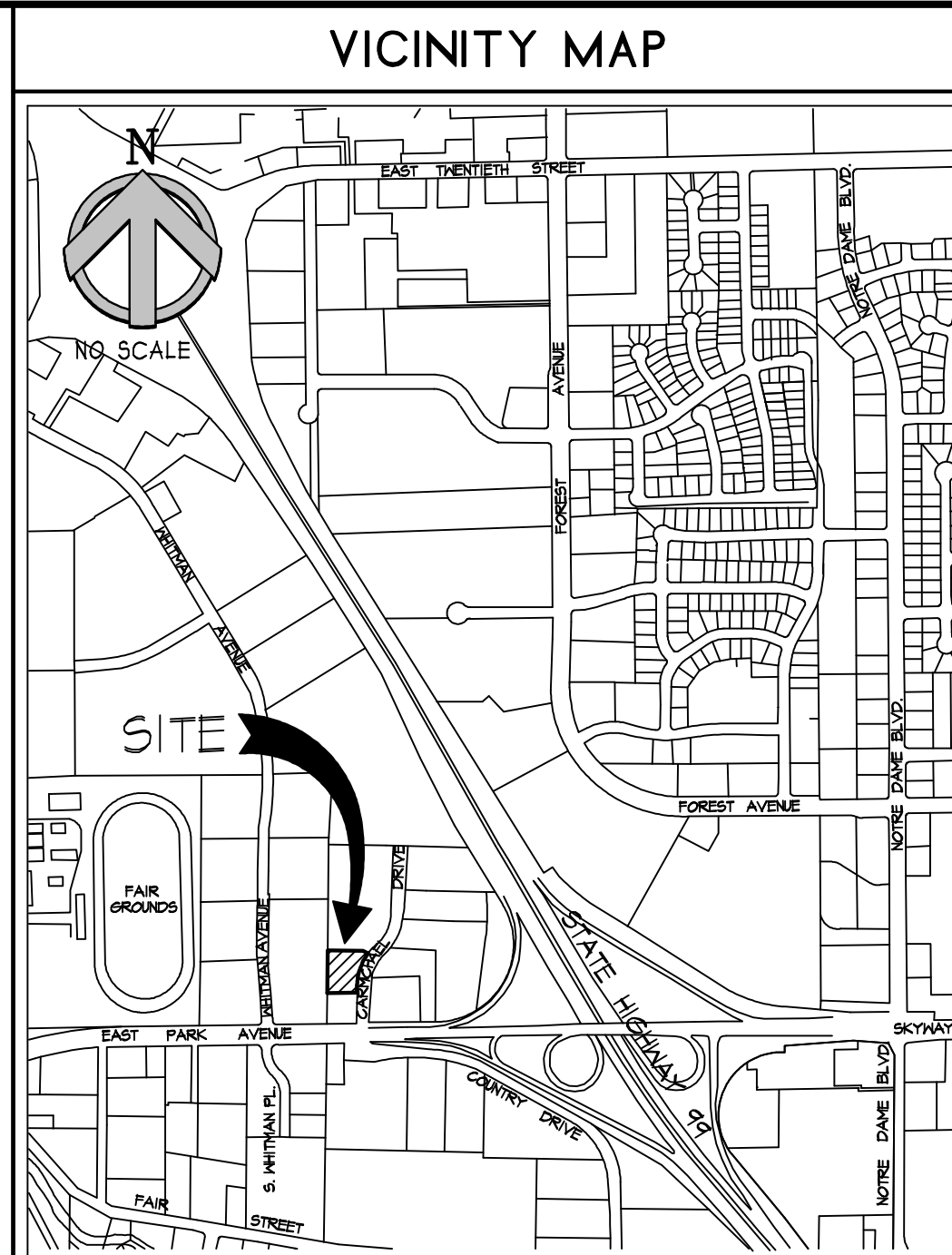


Z:\AD\ad\0004 Files\04-02 Task Gerhart\04-02 Site Plan\asc DS-3 2/14/2004 11:29



CODE ANALYSIS	
CODE	2001 CALIFORNIA BUILDING CODE 2001 CALIFORNIA MECHANICAL CODE 2001 CALIFORNIA FIRE CODE 2001 CALIFORNIA ENERGY CODE 2001 CALIFORNIA ELECTRICAL CODE 2001 CALIFORNIA PLUMBING CODE
USE	OFFICES
ZONING	CS
SETBACKS	NONE
BUILDING AREA:	12,000 SF
PARKING	REQUIRED: 53,191 SF + 12,000 SF = 65,191 SF 45,191 SF / 300 = 219 SPACES
	STALL COUNT: 350 EXISTING -15 (REMOVED) +22 (NEW)
	297 TOTAL STALLS 4 ACCESSIBLE 42 COMPACT 244 STANDARD
LOT COVERAGE	ZONE: CS = 95% COVERAGE MAX LANDSCAPING . SF CONC./PAVING . SF BUILDING . SF LOT AREA: . SF

Revisions:

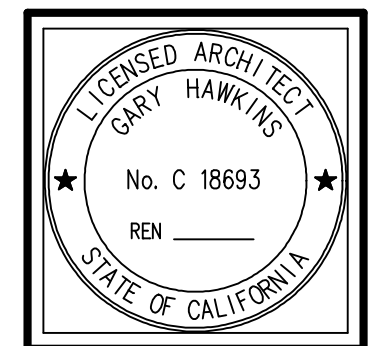
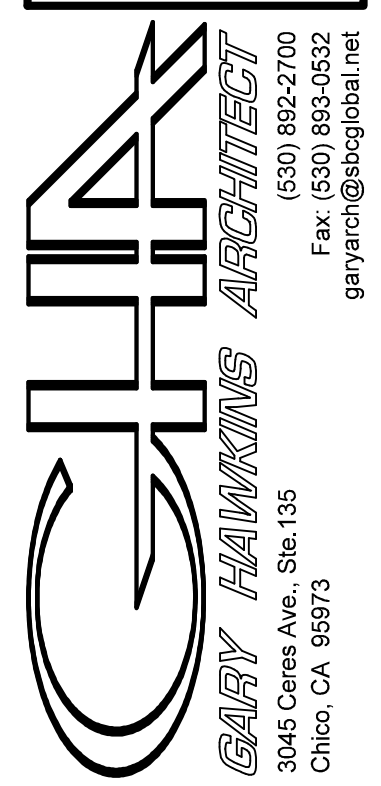
Plot Date: 2/14/2004

PROJECT SCOPE

NEW 12,000 SF COMMERCIAL BUILDING

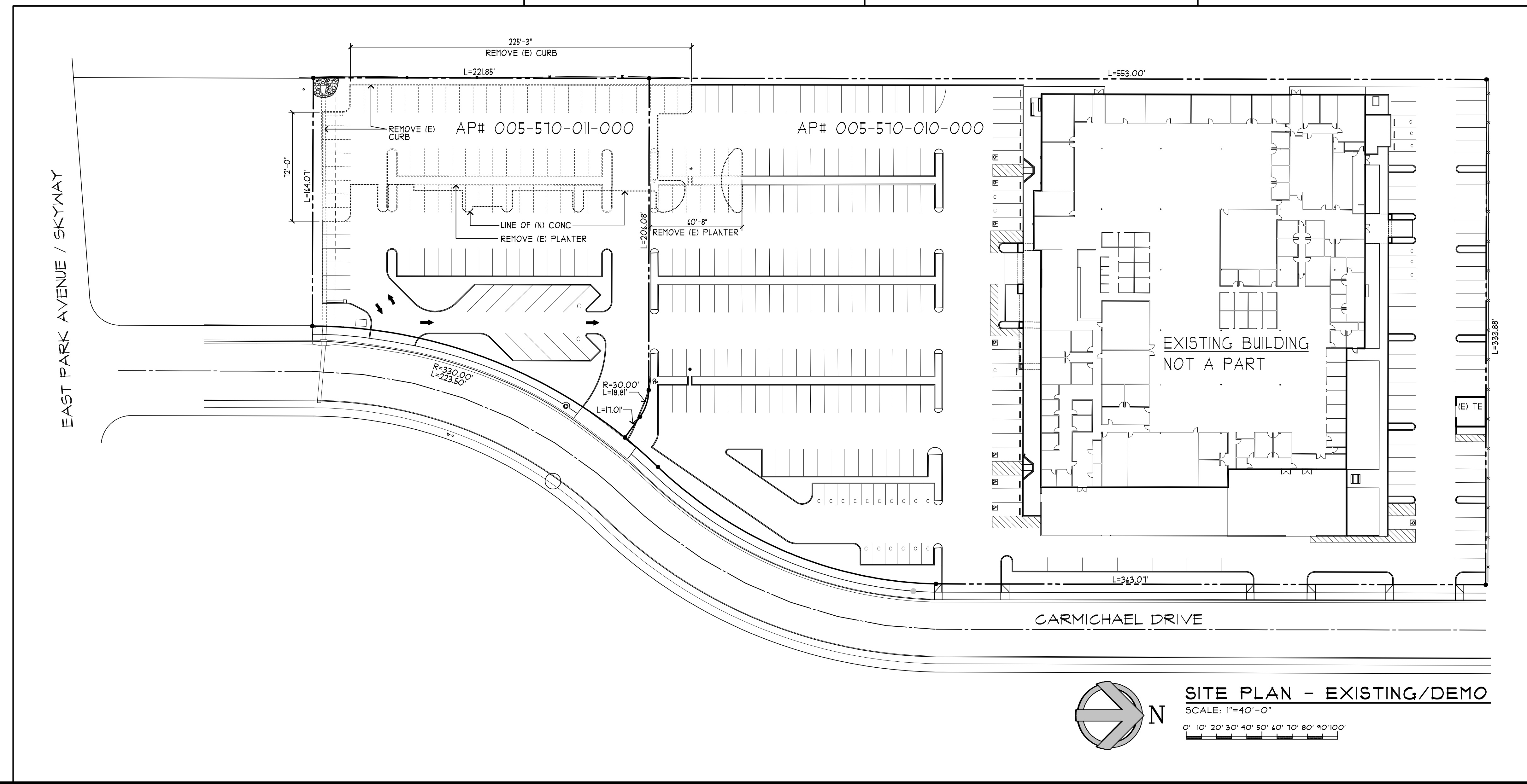
Revisions:

Plot Date: 2/14/2004



AP# 005-510-011-000

New Commercial Building for:
GECCO Development, LLC
 Carmichael Dr., Chico, Ca.



Date: 2-2004
 Drawn: GC
 Job No: 09-012

