

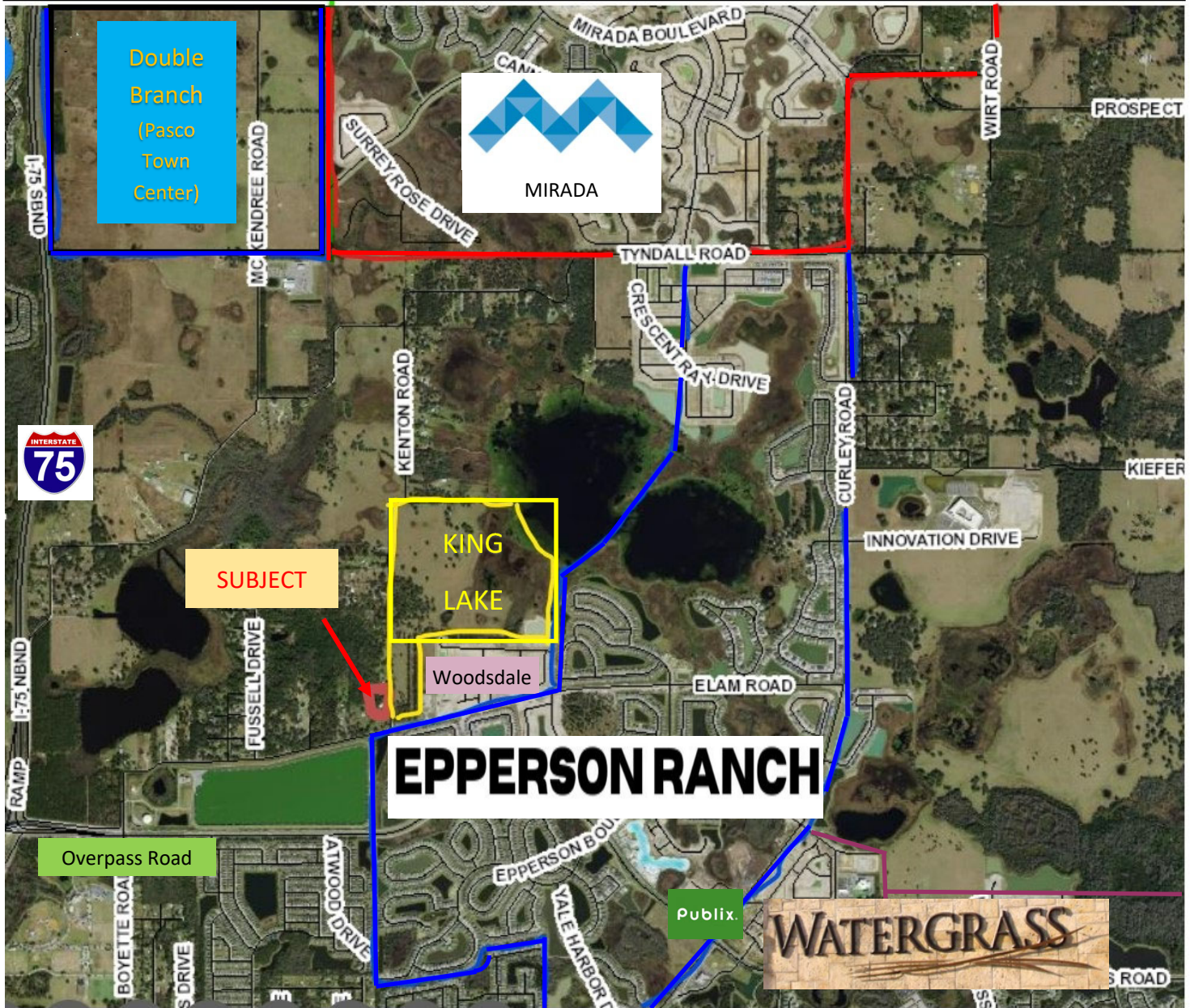


8529 Kenton Road Wesley Chapel, FL. 33545

10 Acres ready to rezone for townhomes.

Listed: \$1,500,000

First Quality Properties. Mark Cravens. Broker. 813.361.0399



Located in the Connected City boundary with Kenton Road about to be widened.

King Lake across the street is a MPUD for 525 residential units and 106,000 sq.ft. of office

County plans for water, sewer and reclaimed water along Kenton Road.

Estimated 4.5-5 acres usable land.

PIN 28-25-20-0000-00400-0029