



**FRANCIS LOGISTICS CENTER**  
241 FRANCIS AVE | MANSFIELD, MA

**FULLY APPROVED & PERMITTED**

**50,000 - 232,500 SF**  
**CLASS A BUILT-TO-SUIT WAREHOUSE**





## BUILDING SPECIFICATIONS

**TOTAL BUILDING SIZE:** 50,000 - 232,500 SF  
Built-to-Suit Customization  
Opportunities

**CLEAR HEIGHT:** 36'

**LOADING:** (42) Loading Docks  
(4) Drive-in Doors

**COLUMN SPACING:** 50' x 52'  
60' Speed Bay

**PARKING:** 159 Vehicle Parking Spaces

**CONSTRUCTION TYPE:** Concrete Tilt-Wall Construction

**OFFICE:** Up to 4 storefront entrances

**CIRCULATION:** Separate Auto and Truck Circulation

**SPRINKLERS:** EFSR System

**POWER:** 3,000 Amps

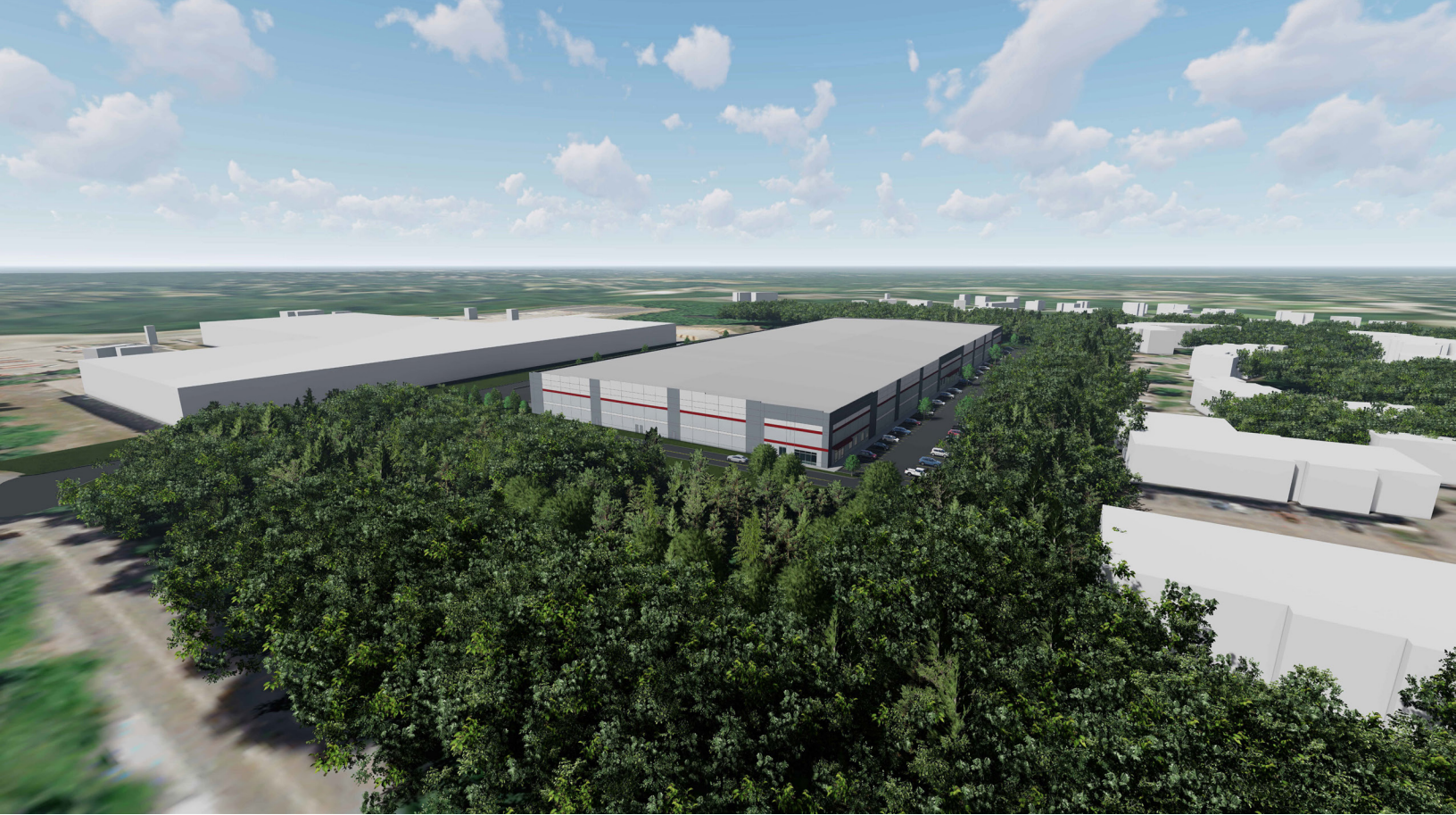
**ROOF:** Rubber Membrane, Solar Ready

**STORAGE:** Ample outdoor storage and/or  
additional truck parking available

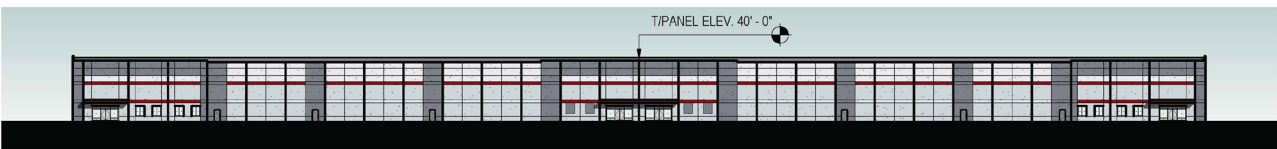
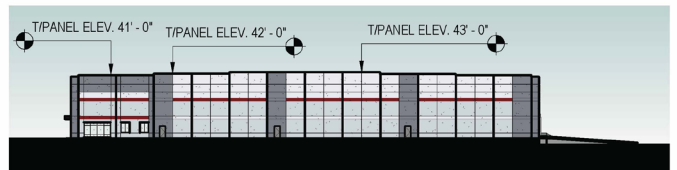
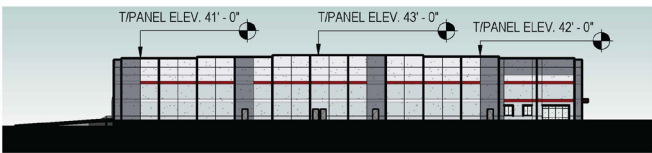
**RAIL:** Freight Rail Served



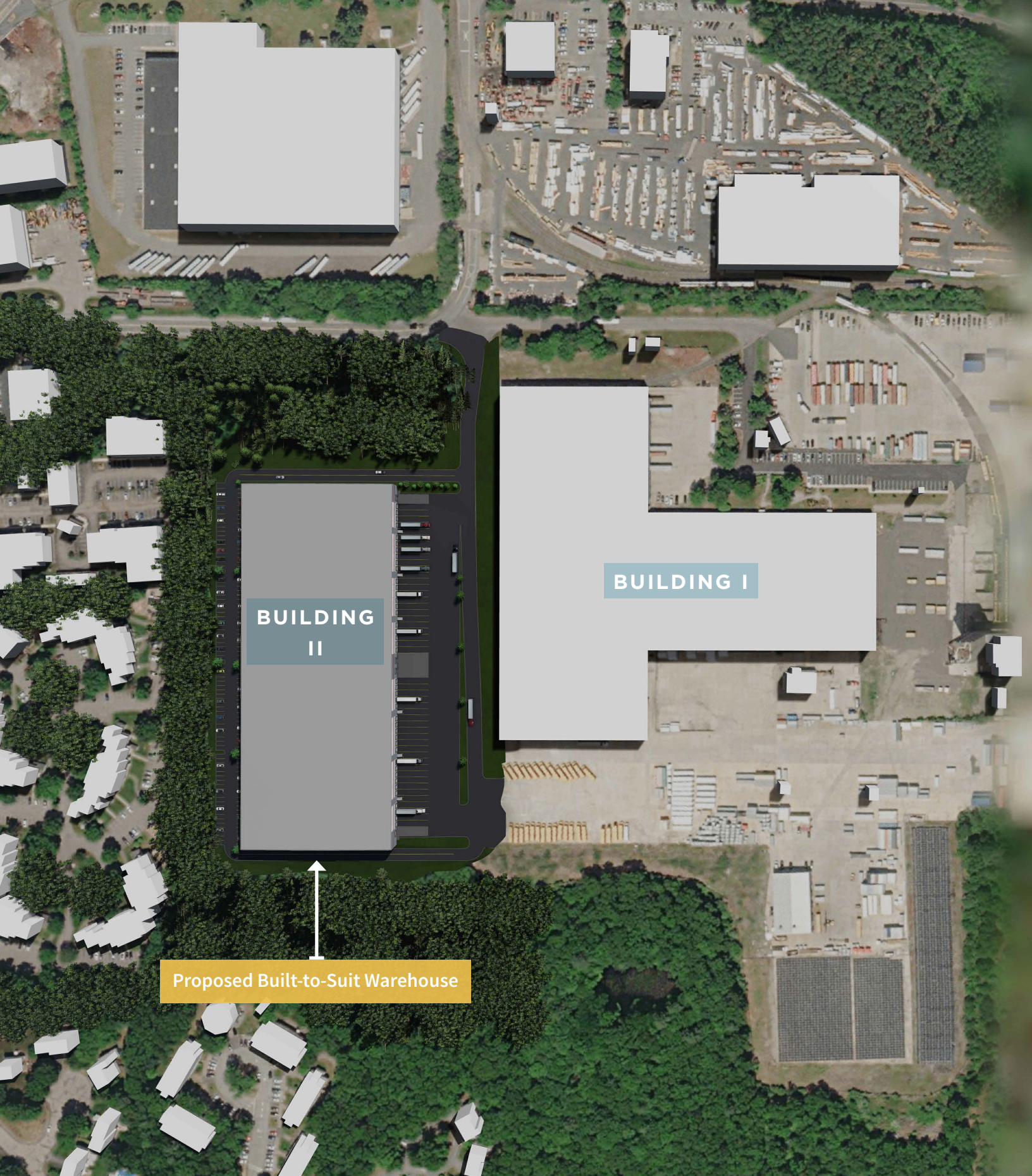




## PROPOSED ELEVATION





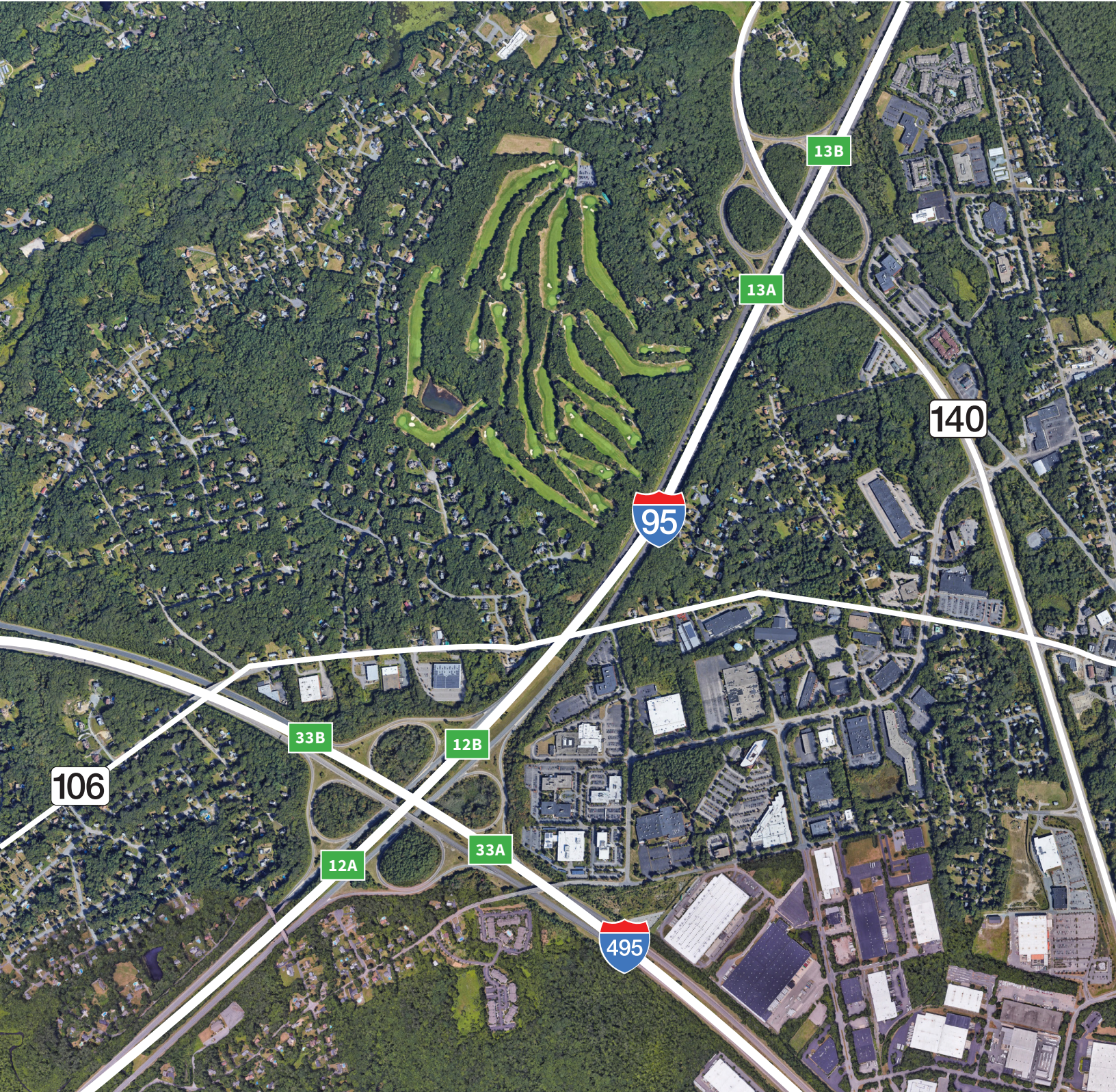


**BUILDING  
II**

**BUILDING I**

**Proposed Built-to-Suit Warehouse**





NOTABLE TENANTS IN THE AREA



Medtronic



ROLF C HASEN







232,500 Built-to-Suit High Bay Warehouse



106

DISTANCE

13A

3.1 Miles from I-95 Exit 13A

12A

4.6 Miles from I-95 Exit 12A



32.5 Miles to the city of Boston



22.7 Miles to the city of Providence



46.1 Miles to the city of Worcester

FRANCIS LOGISTICS CENTER  
241 FRANCIS AVE | MANSFIELD, MA





**FRANCIS LOGISTICS CENTER**  
241 FRANCIS AVE | MANSFIELD, MA



**FOR MORE INFORMATION**

**NED HALLORAN**

*Executive Vice President*  
617.457.3372  
nhalloran@hunnemanre.com

**LEEANNE RIZZO**

*Executive Vice President*  
617.457.3371  
lrizzo@hunnemanre.com

**CONNOR HAYES**

*Executive Vice President*  
617.457.3280  
chayes@hunnemanre.com



303 Congress Street, Boston, MA 02210 | 617.457.3400 | [www.hunnemanre.com](http://www.hunnemanre.com)