



PG COMMERCIAL REAL ESTATE, INC.

FOR LEASE



25 W SKIPPACK PIKE, BROAD AXE, 19002

Convenient Location. Reasonable Rates. Walk to Retail and Restaurants.

COMMERCIAL SPACE AVAILABLE 400 TO 4,000 +/- SF

- Convenient & Accessible to **PA Turnpike**
- **Municipality:** Whitpain Township, Montgomery County
- **Parking Ratio:** 3.8 per 1,000 SF
- **Zoning:** Commercial (allows a variety of uses - professional office, banks, retail, etc.)
- **2 Drive-thru** lanes at former bank space

Call for additional details
or to schedule a tour.



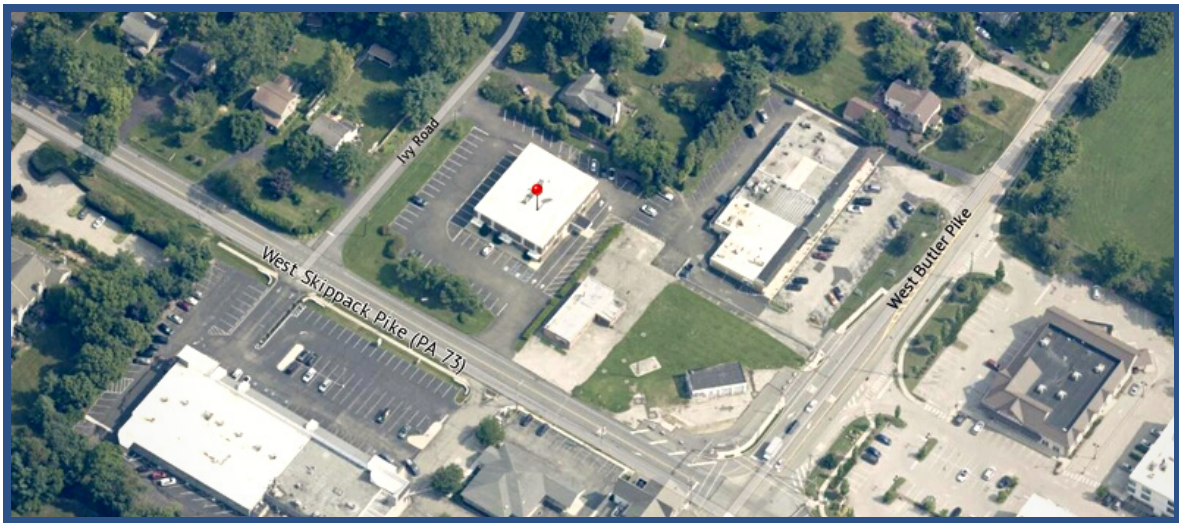
PEGGY GALLAGHER, CCIM

PEGGYG@PGOFFICESPACE.COM | 215.793.0406

P.O. BOX 276, SPRINGHOUSE, PA 19477

NOTE: ALL SPACE IS LEASED AND/OR SOLD WHERE IS, AS IS, NO WARRANTIES, NO GUARANTEES. ALL INFORMATION FURNISHED REGARDING PROPERTY FOR SALE, RENTAL OR FINANCING IS FROM SOURCES DEEMED RELIABLE BUT NO WARRANTY OR REPRESENTATION IS MADE AS TO THE ACCURACY THEREOF AND SAME IS SUBMITTED SUBJECT TO ERRORS, OMISSIONS, CHANGE OF PRICE, RENTAL OR OTHER CONDITIONS PRIOR TO SALE, LEASE OR FINANCING OR WITHDRAWAL WITHOUT NOTICE. NO LIABILITY OF ANY KIND IS TO BE IMPOSED ON THE BROKER HEREIN.

25 W SKIPPACK PIKE, BROAD AXE, 19002



LOCAL STATISTICS WITHIN A 1 MILE RADIUS OF THE OFFICE

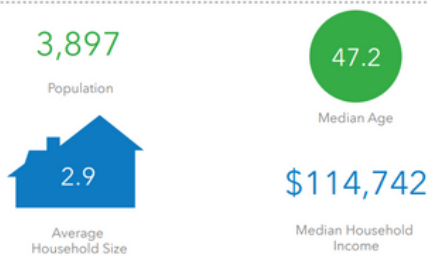


KEY FOR CIRCLE RADIUS

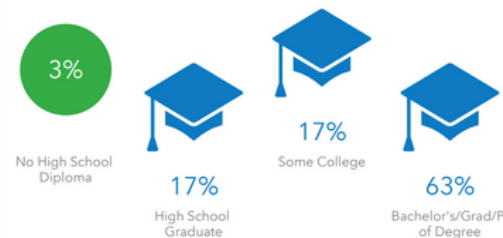
- RED: 1 MILE**
- GREEN: 3 MILES**
- BLUE: 5 MILES**

NOTE: ALL SPACE IS LEASED AND/OR SOLD WHERE IS, AS IS, NO WARRANTIES, NO GUARANTEES. ALL INFORMATION FURNISHED REGARDING PROPERTY FOR SALE, RENTAL OR FINANCING IS FROM SOURCES DEEMED RELIABLE BUT NO WARRANTY OR REPRESENTATION IS MADE AS TO THE ACCURACY THEREOF AND SAME IS SUBMITTED SUBJECT TO ERRORS, OMISSIONS, CHANGE OF PRICE, RENTAL OR OTHER CONDITIONS PRIOR TO SALE, LEASE OR FINANCING OR WITHDRAWAL WITHOUT NOTICE. NO LIABILITY OF ANY KIND IS TO BE IMPOSED ON THE BROKER HEREIN.

KEY FACTS



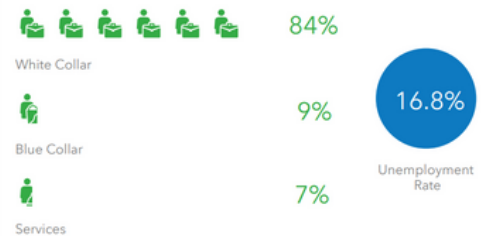
EDUCATION



BUSINESS



EMPLOYMENT



INCOME



Households By Income

The largest group: \$200,000+ (24.2%)
The smallest group: <\$15,000 (3.1%)

Indicator	Value	Difference	Bar
<\$15,000	3.1%	-2.5%	█
\$15,000 - \$24,999	4.1%	-1.2%	█
\$25,000 - \$34,999	3.2%	-2.6%	█
\$35,000 - \$49,999	6.0%	-2.6%	█
\$50,000 - \$74,999	14.0%	-1.4%	█
\$75,000 - \$99,999	13.8%	+0.3%	█
\$100,000 - \$149,999	15.5%	-2.6%	█
\$150,000 - \$199,999	16.0%	+3.8%	█
\$200,000+	24.2%	+8.7%	█