

RETAIL PROPERTY FOR LEASE

# BLACK WARRIOR CENTER

230 MCFARLAND BLVD , NORTHPORT, AL 35476



## PROPERTY DESCRIPTION

This 3,000 SF suite at Black Warrior Center offers an open, flexible layout well suited for retail, service, or professional use. The space features tall ceilings, wide storefront glass, and a layout that allows for easy customization. Ample on-site parking and a clear, visible storefront support both customer access and daily operations.

## LOCATION DESCRIPTION

Situated along McFarland Boulevard (Hwy 82), Black Warrior Center benefits from one of Northport's most heavily traveled retail corridors. Surrounded by national retailers and established neighborhoods, the center sees consistent daily traffic and offers easy access for both customers and employees.



- 3,000 SF retail / service / office suite
- Open floor plan
- Large storefront windows and strong visibility
- Ample on-site parking
- Located within an established retail center

## OFFERING SUMMARY

Lease Rate:	\$12.00 SF/yr (NNN)
Available SF:	3,000 SF
Building Size:	30,780 SF

**RICHARD HENRY**

205.236.5396

info@rightspacecre.com



RETAIL PROPERTY FOR LEASE

# BLACK WARRIOR CENTER

230 MCFARLAND BLVD , NORTHPORT, AL 35476



**RICHARD HENRY**

205.236.5396

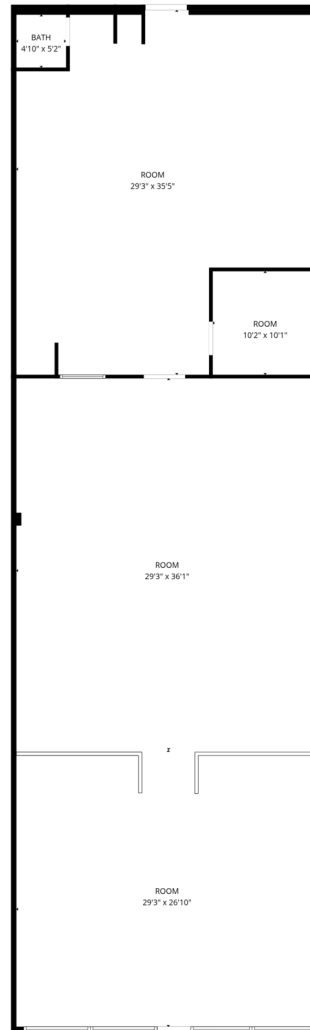
info@rightspacecre.com

**RS**  
RIGHT SPACE  
rightspacecre.com

RETAIL PROPERTY FOR LEASE

# BLACK WARRIOR CENTER

230 MCFARLAND BLVD , NORTHPORT, AL 35476



FLOOR PLAN CREATED BY CUBICASA APP. MEASUREMENTS DEEMED HIGHLY RELIABLE BUT NOT GUARANTEED.

**RICHARD HENRY**

205.236.5396

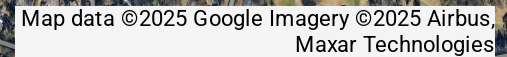
info@rightspacecre.com



rightspacecre.com



230 MCFARLAND BLVD , NORTHPORT, AL 35476



rightspacecre.com



RETAIL PROPERTY FOR LEASE

# BLACK WARRIOR CENTER

230 MCFARLAND BLVD , NORTHPORT, AL 35476



**RICHARD HENRY**

**Direct:** 205.236.5396  
info@rightspacecre.com



rightspacecre.com