

JAMESON.

FOR LEASE

OFFICE/MEDICAL

5015 North Paulina Street
Chicago, IL 60640

\$22.00 SF/yr

Mark Kishtow
Senior VP, Investment Sales
312.867.2265
mkishtow@jameson.com

Brent Burden, CCIM
Senior Vice President
847.826.7271
bburden@jameson.com

JAMESONCOMMERCIAL.COM

©Jameson Real Estate LLC. All information provided herein is from sources deemed reliable. No representation is made as to the accuracy thereof & it is submitted subject to errors, omissions, changes, prior sale or lease, or withdrawal without notice. Projections, opinions, assumptions & estimates are presented as examples only & may not represent actual performance. Consult tax & legal advisors to perform your own investigation.



JAMESON.



LEASE OVERVIEW

LEASE PRICE: \$22.00 SF/yr
SUITE SIZES: 575- 1,850 SF
LEASE TYPE: Gross
TENANCY: Multi-Tenant-
SUBMARKET: Ravenswood
MARKET: Chicago
CROSS STREETS: Paulina /Winnemac

AREA TENANTS

- Mariano's
 - Jersey Mike's
 - Bar Roma Italian Restaurant
 - Ace Hardware
 - Orange Theory Fitness
 - The Bongo Room Lounge
-

PROPERTY DESCRIPTION

Thorek Memorial Hospital
Medical Office Suites FOR LEASE
Office Suites also available for Non-Medical uses.

PROPERTY HIGHLIGHTS

- Medical ready suites available: 575- 1,850 SF
 - Existing medical office conditions
 - Gross leases
 - Utilities and wifi included in rent.
 - Thorek Hospital Andersonville Pavillion
 - Onsite surface parking
-

AREA AND TRANSPORTATION HIGHLIGHTS

- 2 blocks from Ravenswood METRA station,
 - 5 blocks from DAMEN CTA Brown line station.
 - 2 blocks from Lawrence Avenue CTA bus line.
 - 2 blocks from Clark Street CTA bus line.
-

JAMESON.

INTERIOR PHOTOS

5015 North Paulina Street, Chicago, IL 60640

\$22.00 SF/yr

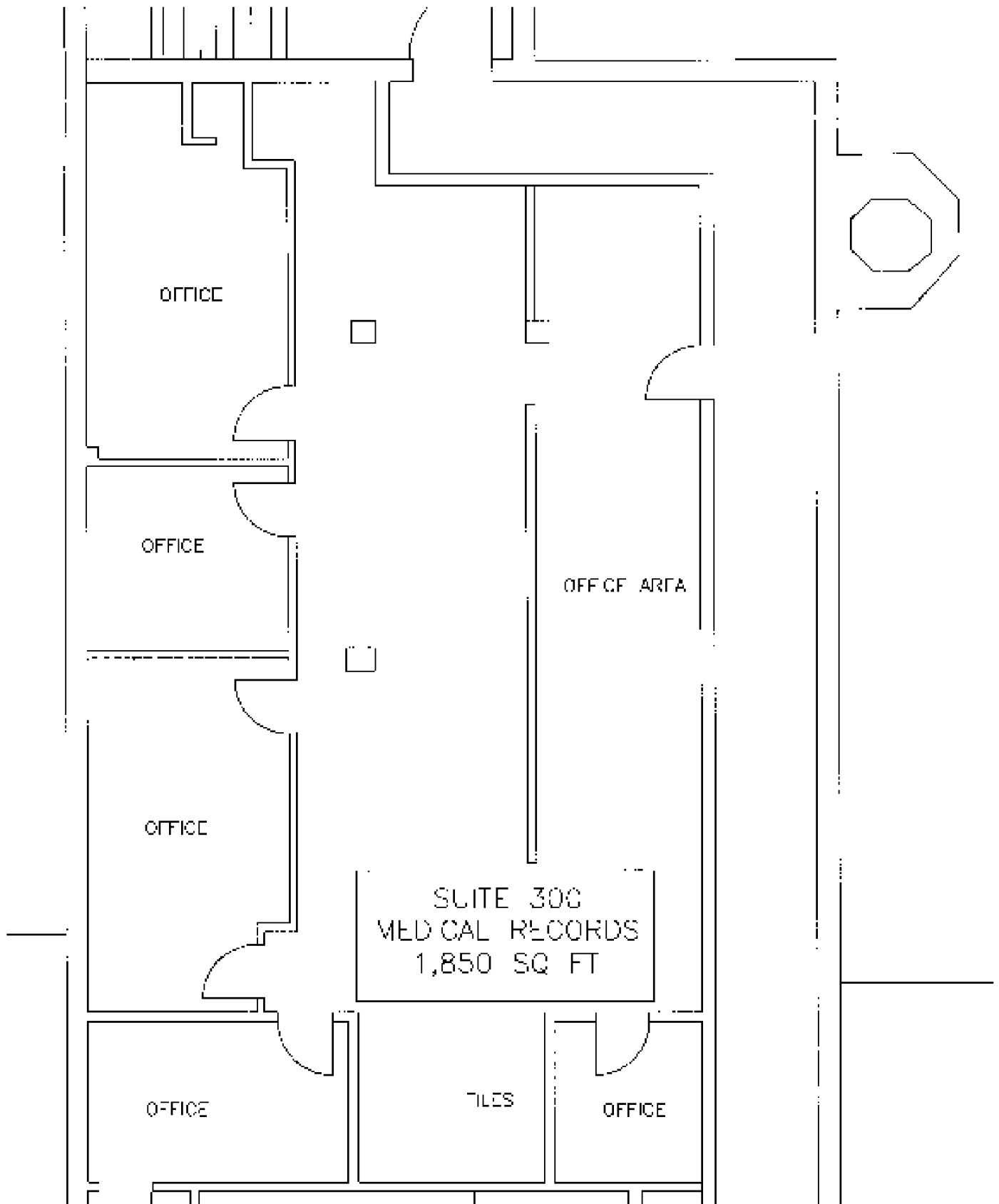


JAMESON.

SUITE 300: 1,850 RSF, \$3,392/MONTH

5015 North Paulina Street, Chicago, IL 60640

\$22.00 SF/yr



JAMESON.

SUITE 210: 900 SF

5015 North Paulina Street, Chicago, IL 60640

PAVILION SUITE 210

APPROX. - 900 SQ FT

RECEPTION/WAITING AREA

13'-0" x 24'-0"

TOILET

CLOSET

TOILET

CLOSET

OFFICE/EXAM ROOM

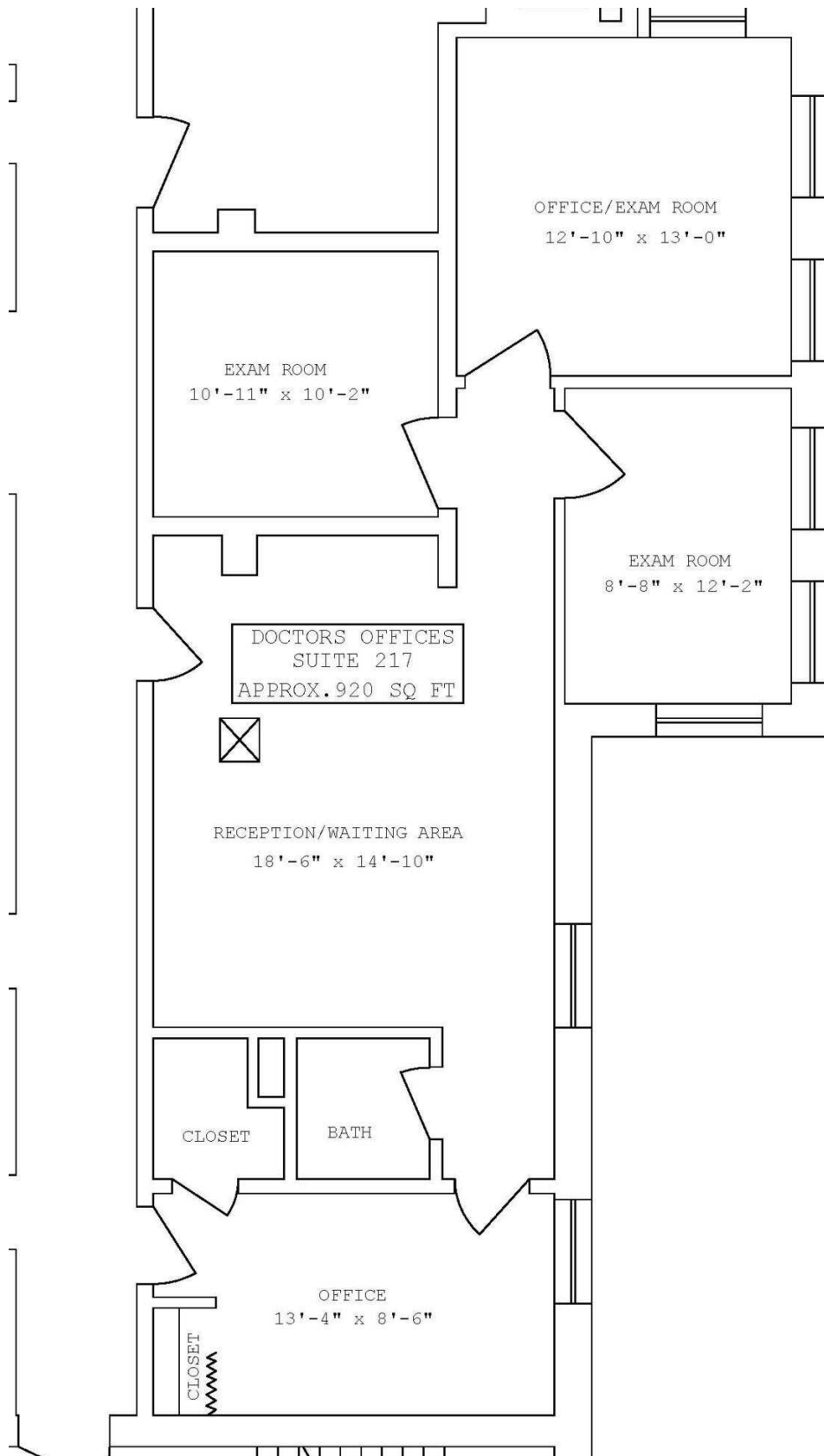
16'-0" x 12'-0"

OFFICE/EXAM ROOM

16'-0" x 17'-0"

STE. 217: 920 SF

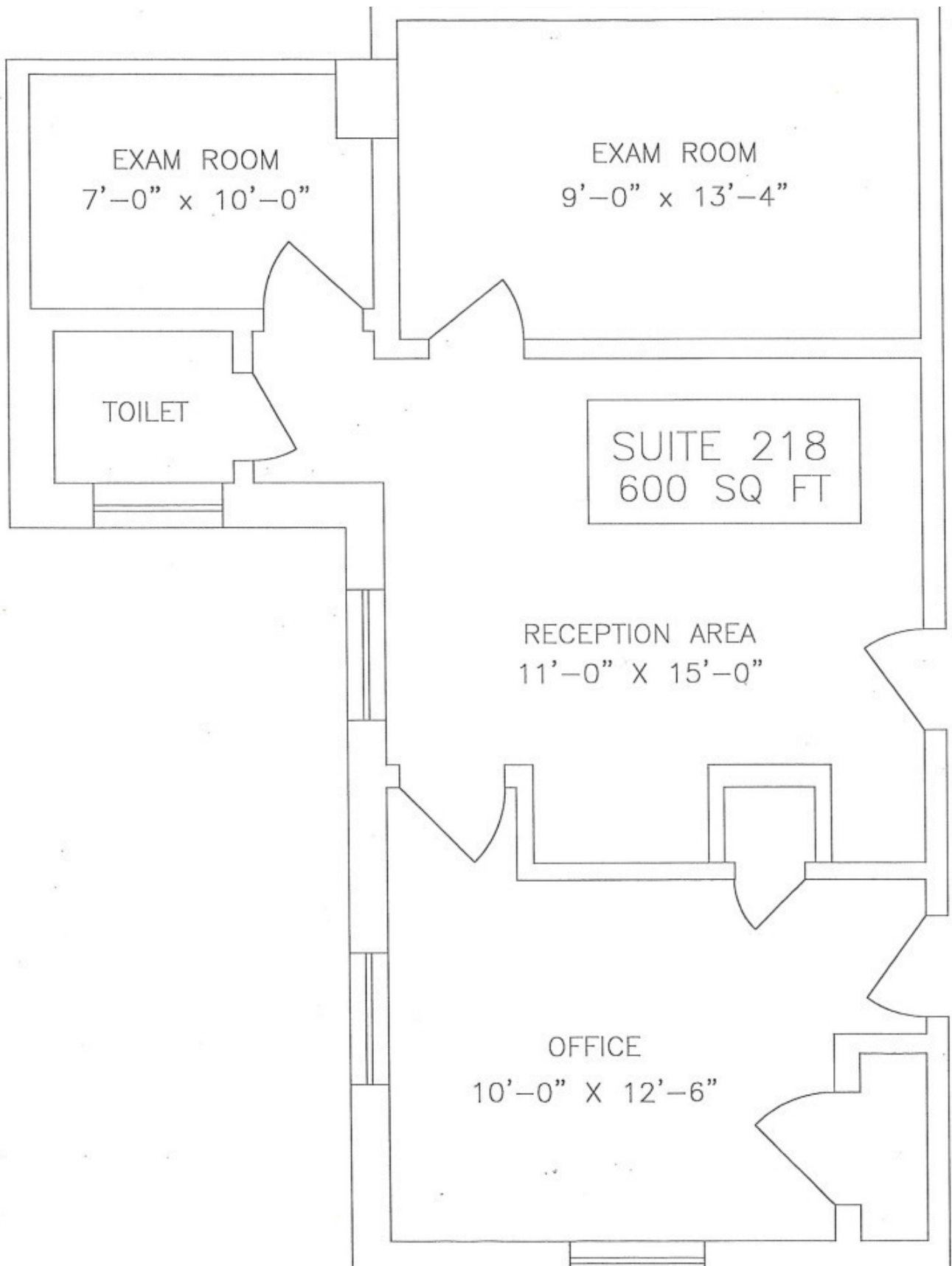
5015 North Paulina Street, Chicago, IL 60640

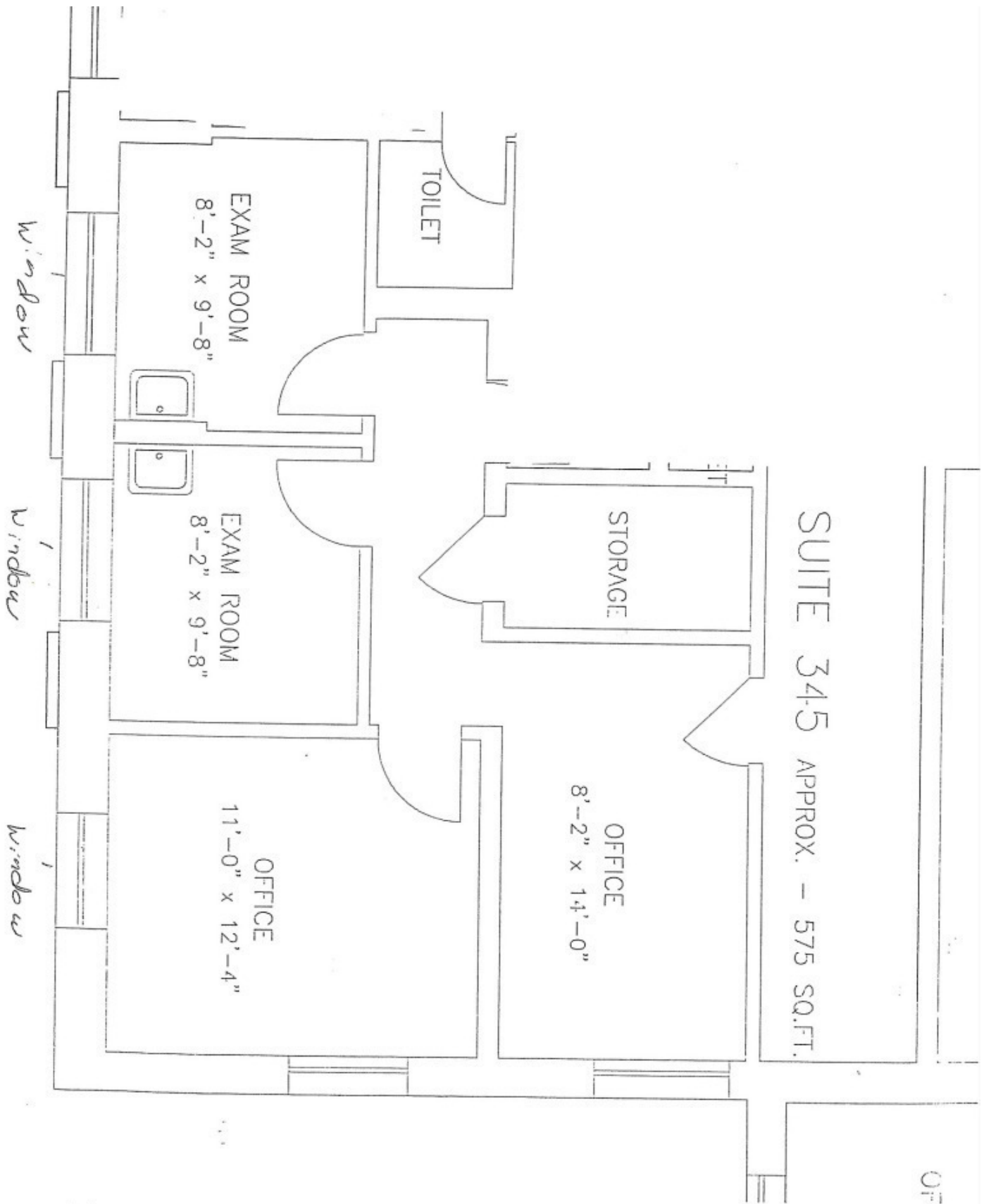


JAMESON.

STE. 218: 600 SF

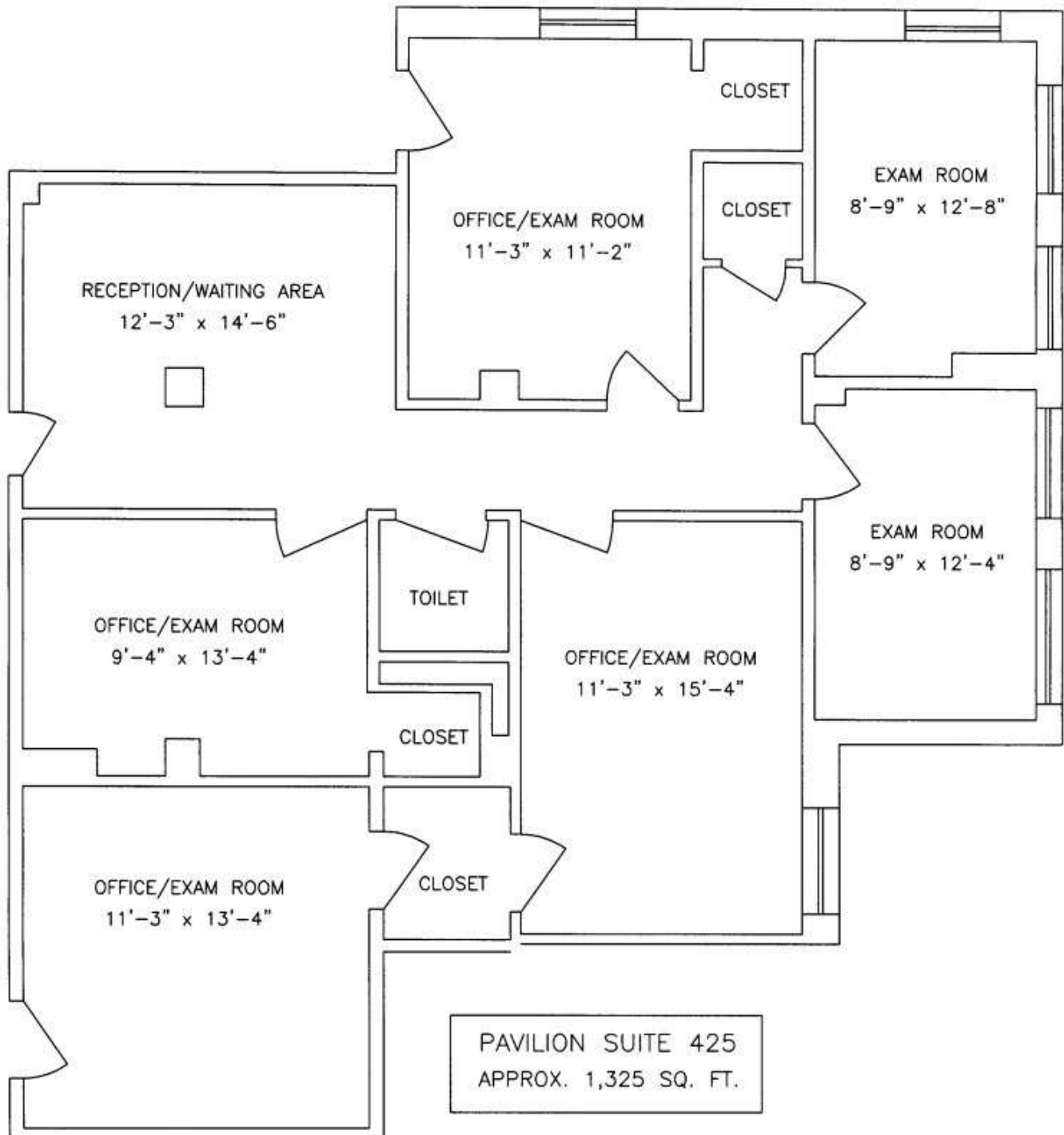
5015 North Paulina Street, Chicago, IL 60640





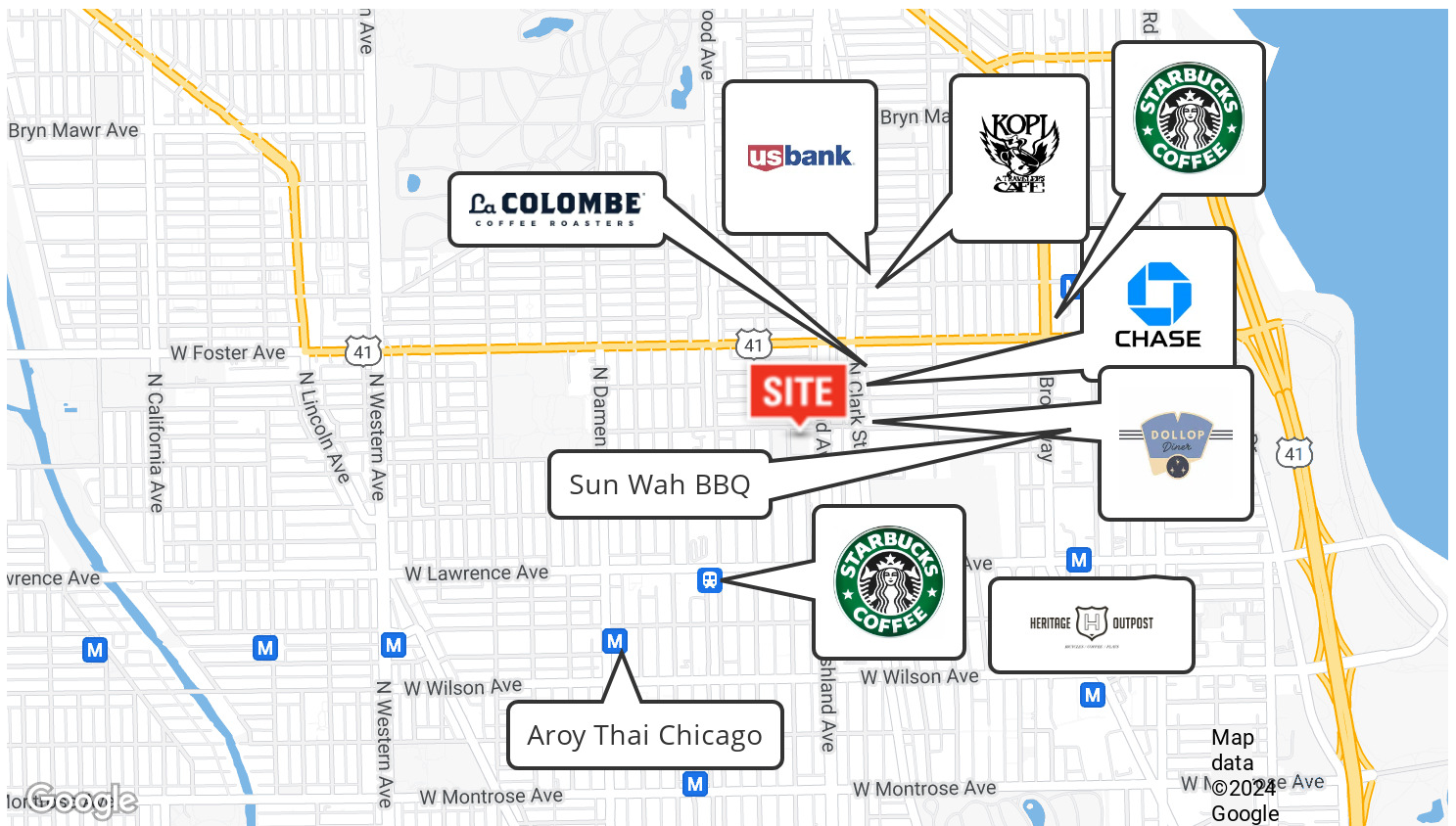
SUITE 425: 1,325 SF

5015 North Paulina Street, Chicago, IL 60640



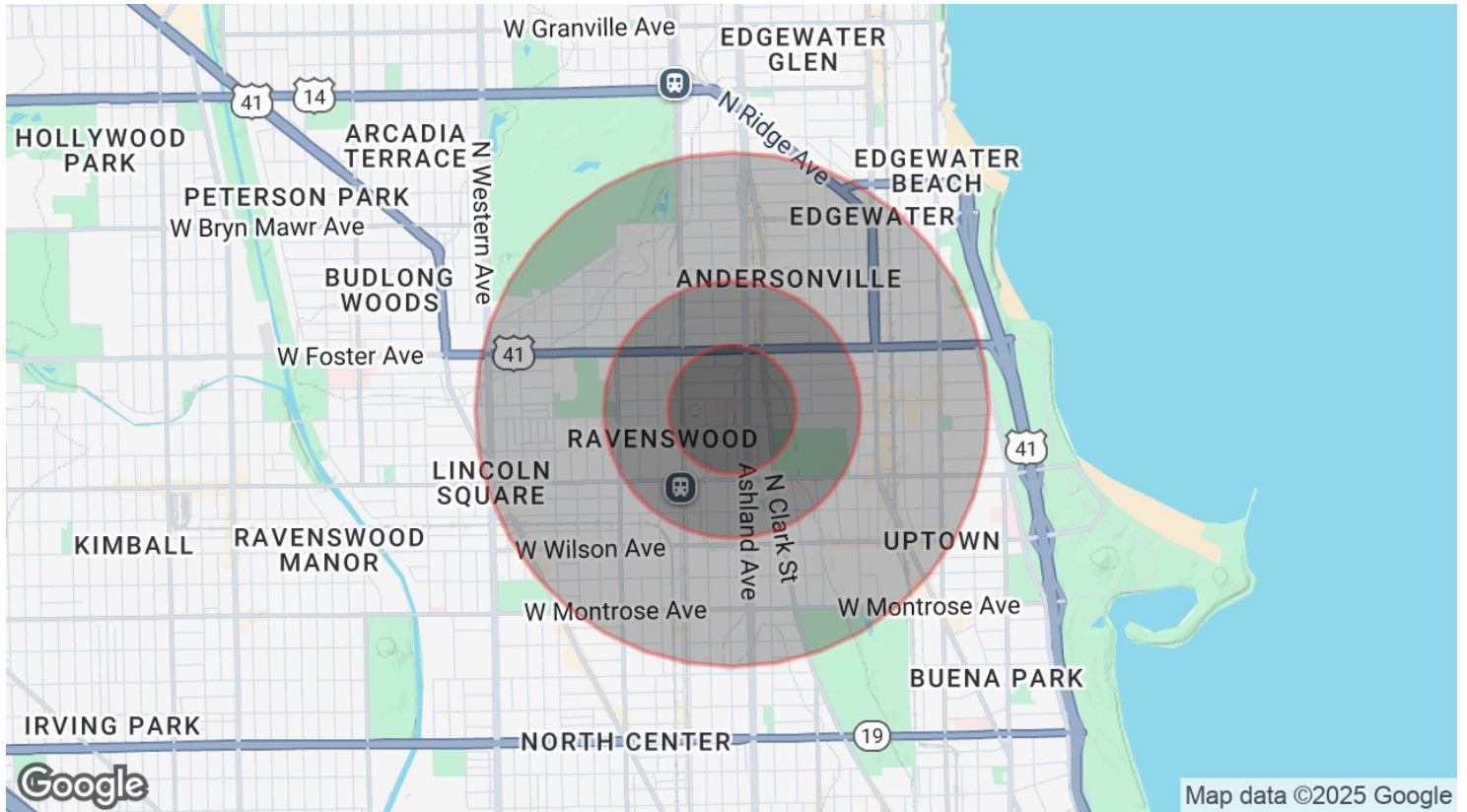
AERIAL & STREET DETAIL

5015 North Paulina Street, Chicago, IL 60640



DEMOGRAPHICS MAP & REPORT

5015 North Paulina Street, Chicago, IL 60640



POPULATION

	0.25 MILES	0.5 MILES	1 MILE
Total Population	4,674	17,646	77,485
Average Age	38.5	35.8	37.2
Average Age (Male)	38.7	36.0	37.3
Average Age (Female)	40.2	36.7	37.5

HOUSEHOLDS & INCOME

	0.25 MILES	0.5 MILES	1 MILE
Total Households	2,627	9,532	41,614
# of Persons per HH	1.8	1.9	1.9
Average HH Income	\$99,493	\$99,126	\$89,983
Average House Value	\$372,381	\$382,124	\$371,870

2020 American Community Survey (ACS)