


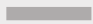
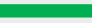

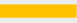


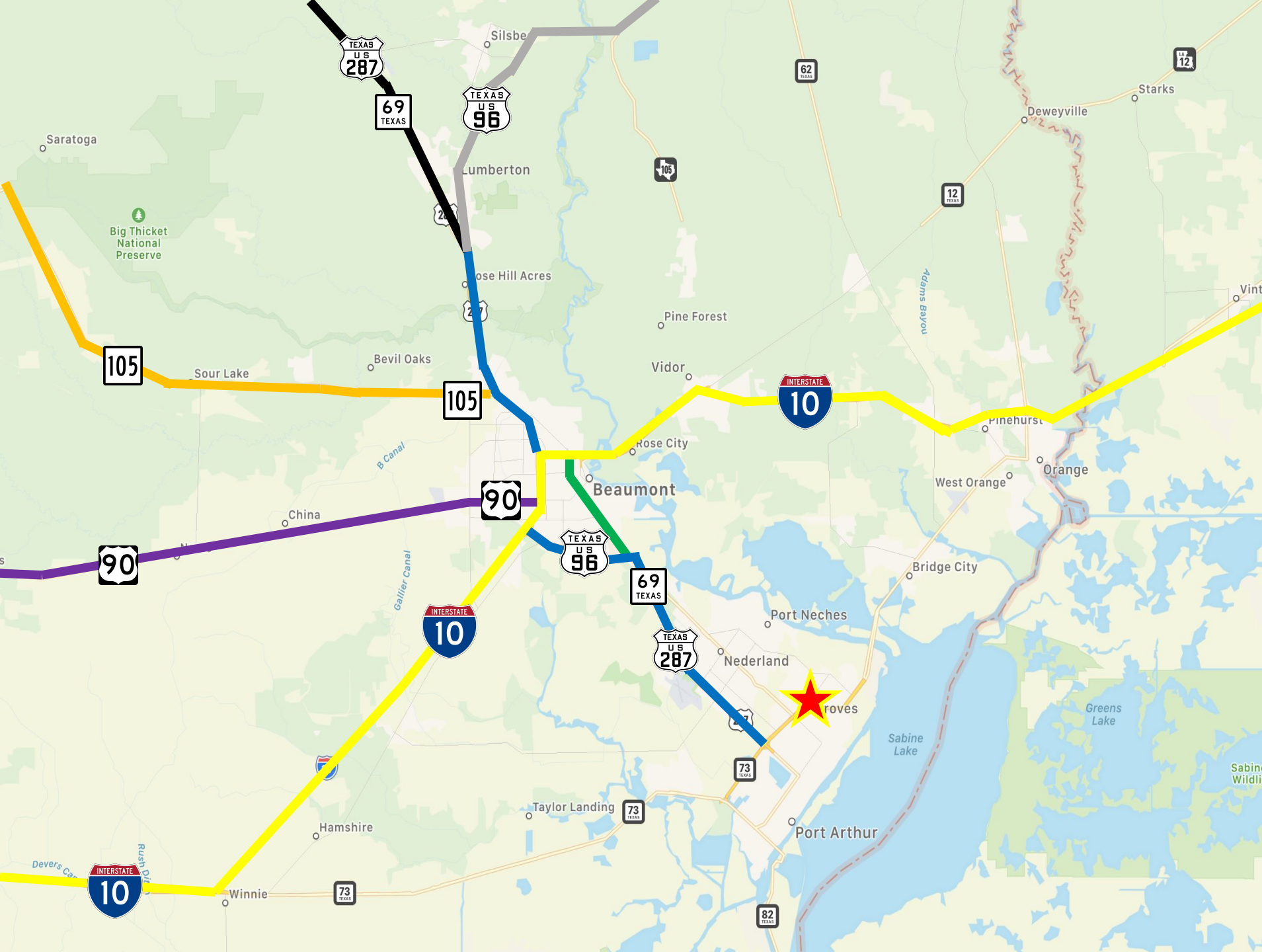
Transit Key

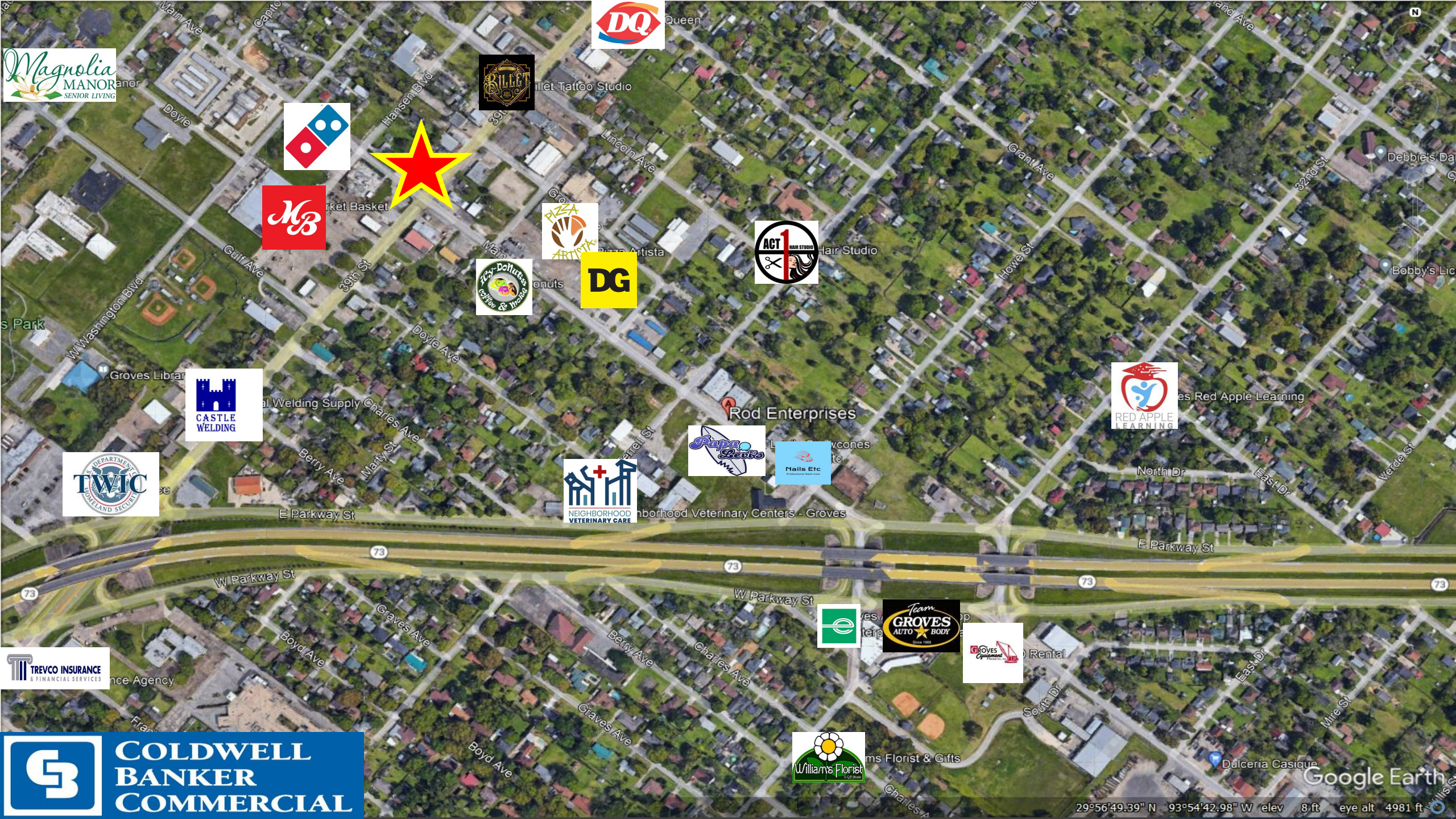
- IH 10 
- US 287/ Hwy 69/ Hwy 96 
 - US 287/ Hwy 69 
 - Hwy 96 
- TX 380 (MLK) 
- Hwy 90 (College St) 
- Hwy 105 

Distance Estimates

- Jack Brooks Regional Airport: +/- 9 miles
- Louisiana Border: +/- 25 miles
- Beaumont: +/- 26 miles
- Houston: +/- 90 miles
- Port of Houston: +/- 86 miles
- Port of Galveston: +/- 81 miles
- Port of Beaumont: +/- 18 miles

**4010 MAIN AVE.
Groves, Texas**






**COLDWELL
BANKER
COMMERCIAL**

