

FOR SUBLEASE

PROMINENT NW 23RD LOCATION



**2300 NW THURMAN ST
PORTLAND OR**

DOUG DEURWAARDER
503-279-1700
cushmanwakefield.com



PROPERTY FEATURES | 2300 NW THURMAN STREET

HIGHLY VISIBLE CORNER LOCATION IN PREMIER NW PORTLAND RETAIL DISTRICT



SUBLEASE DETAILS

Building Size	4,609 SF
Off-street Parking	10 spaces + ADA
Zoning	CM2
Lease Expiration	April 2031
Lease Rate	Call for rates
Available Date	January 2026

Seize this rare opportunity to bring your creative vision to life.

This prime location has served the local community for over 20 years, now it is poised and ready to embark on an exciting new chapter.

Nestled among one of Portland's liveliest neighborhoods, this signalized corner of NW 23rd Avenue and NW Thurman Street serves as the gateway to Forest Park.

- Large main area with two smaller rooms in back
- Two restrooms and a kitchen/breakroom
- Large window line along NW Thurman Street and NW 23rd Avenue for high visibility

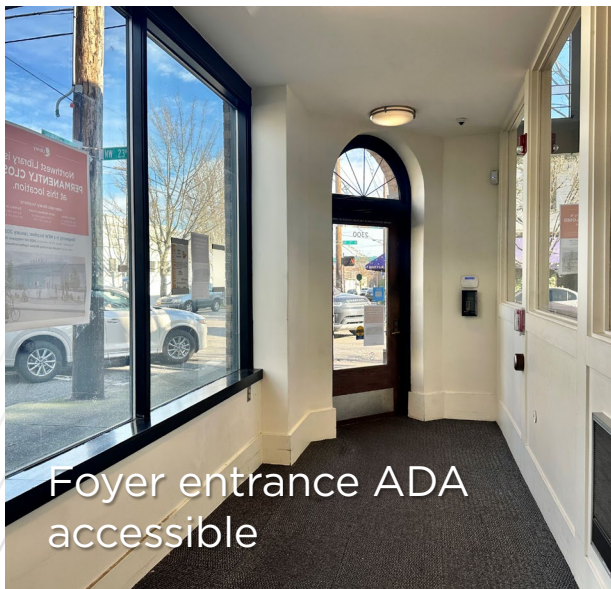
NEIGHBORING BUSINESSES

2300 NW Thurman Street shares the block with Pine State Biscuits, Life of Pie, and Moberi, and sits directly across the street from McMenamins Tavern & Pool and 23rd Avenue Bottle Shop.





Large window line along NW 23rd Avenue and NW Thurman Street



Foyer entrance ADA accessible



Large main area, two smaller rooms in back

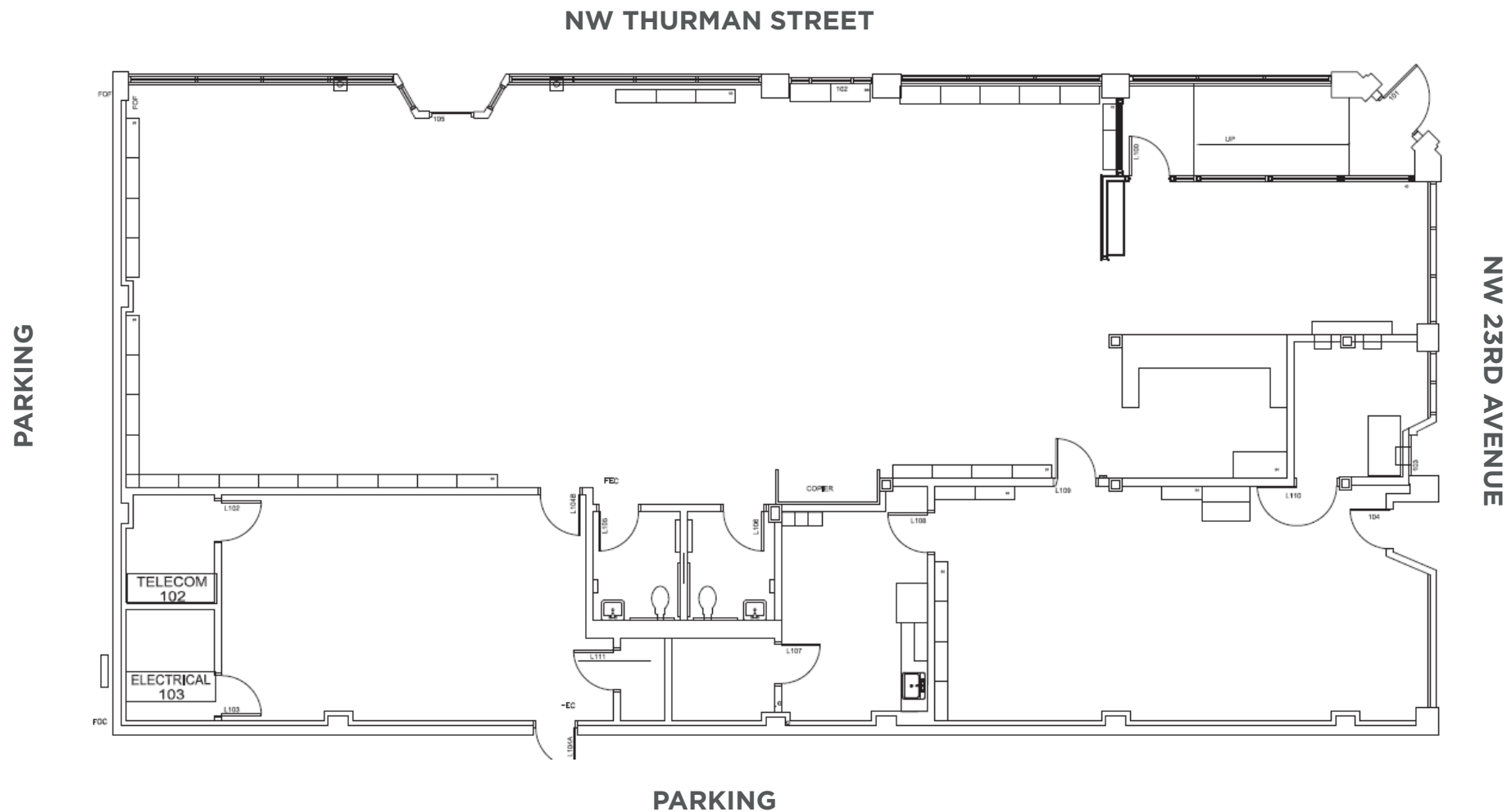


Breakroom and two restrooms

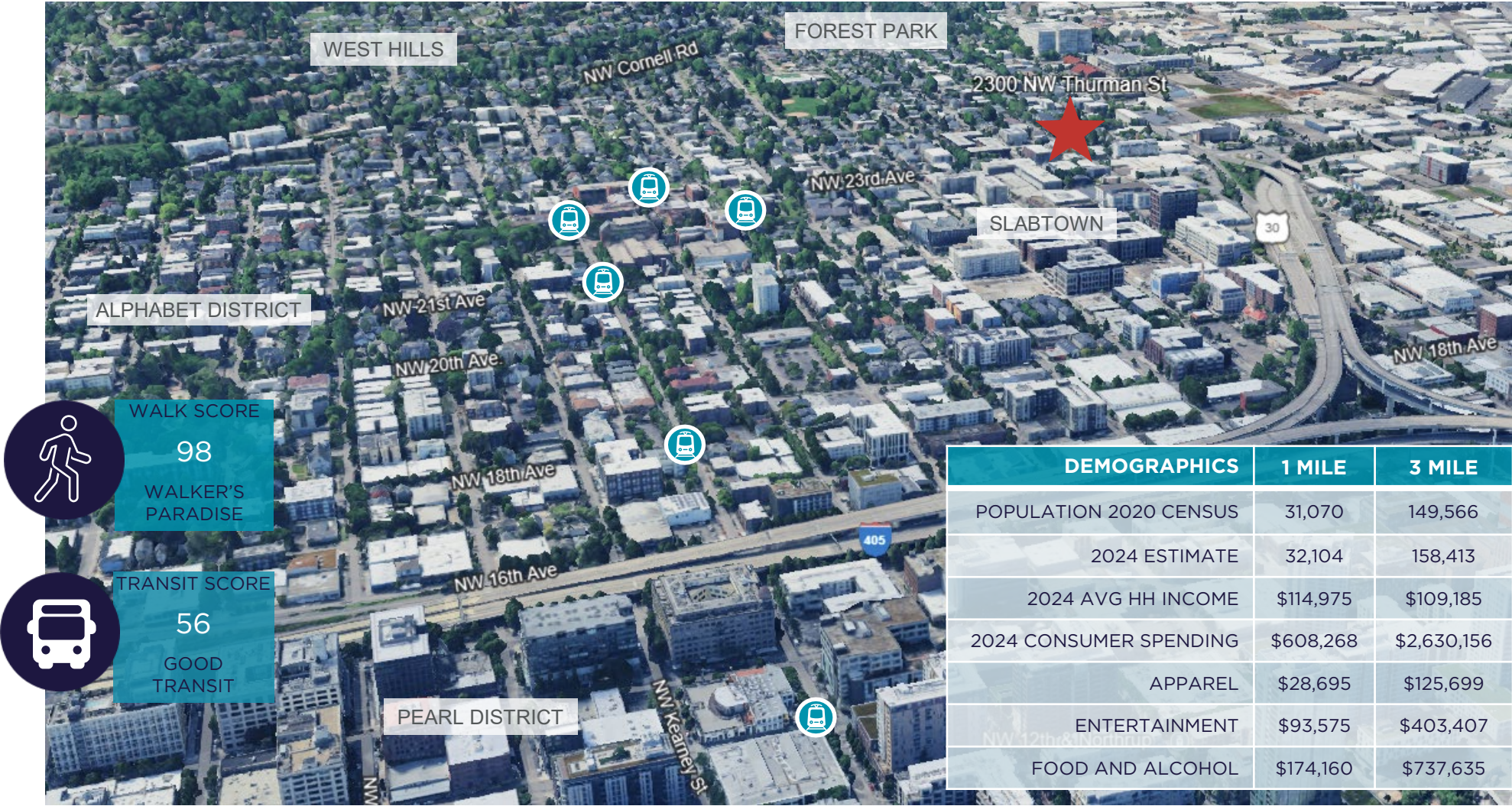


FLOOR PLAN | 2300 NW THURMAN STREET

4,609 SQUARE FEET



AERIAL | 2300 NW THURMAN STREET

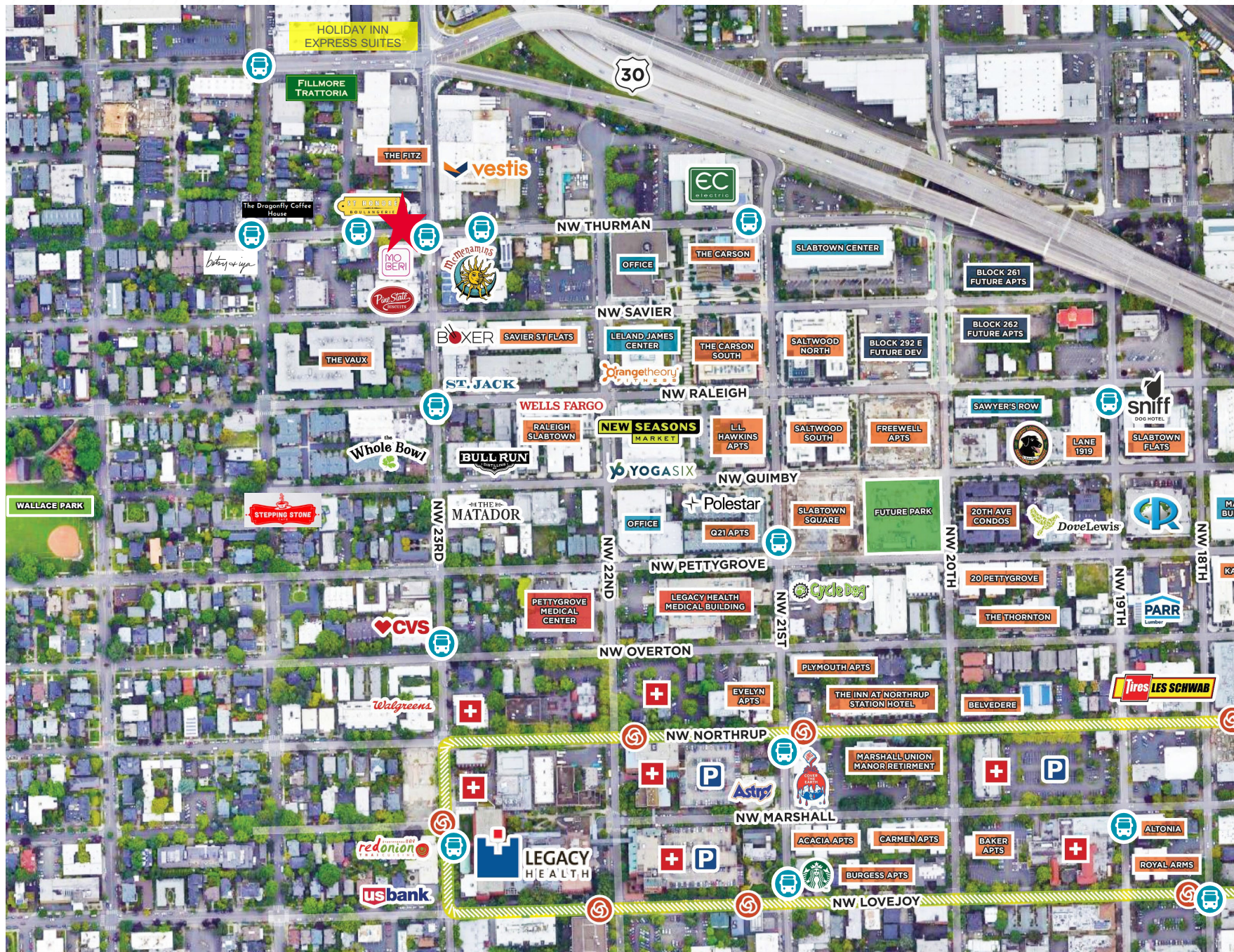


UNPARALLELED ACCESSIBILITY TO EXCEPTIONAL DESTINATIONS

The recent development of Slabtown has tied together the Pearl District and Northwest Portland into a seamless destination for food, entertainment, and shopping.

Public transit offers many options to enjoy all the amenities of the area. Trimet bus stops along NW 23rd Avenue include a stop in front of the subject property, while the Portland Streetcar's future expansion to Montgomery Park will bring more visitors to NW 23rd Avenue's northern end.

LOCAL AMENITIES | 2300 NW THURMAN STREET





CONTACT

Doug Deurwaarder

(503) 317 2176

200 SW Market Street Suite 200

Portland, OR 97201

Doug.Deurwaarder@cushwake.com

Matt Johnson

(503) 317 8053

200 SW Market Street Suite 200

Portland, OR 97201

Matt.Johnson@cushwake.com

