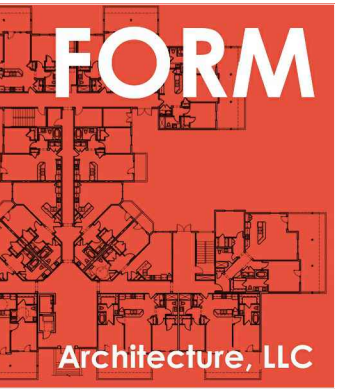


OVERALL SITE INFORMATION

MONTECILLO UNIT FIFTEEN
 BEING A PORTION OF LOT 6, BLOCK 2
 MONTECILLO UNIT THREE REPLAT "B"
 CONTAINING 11.961 ACRES



444 EXECUTIVE CENTER BLVD, SUITE 238
 EL PASO, TEXAS 79902
 © (915) 842-8570
 www.eptcommunities.com



150 W. CASTELLANO SUITE B
 EL PASO, TEXAS 79912
 © (915) 842-8570

Copyright
 THIS DOCUMENT IS COPYRIGHTED BY FORM DESIGN STUDIO, AND IS NOT TO BE USED BY ANY OTHER PARTY ON EXTENSIONS OF SUCH PROJECT OR ANY OTHER PROJECT, ANY REUSE, INCLUDING COPYING AND/OR MODIFYING THIS DOCUMENT, WITHOUT WRITTEN PERMISSION FROM FORM DESIGN STUDIO. FOR THE SPECIFIC PURPOSE INTENDED IS A VIOLATION OF FEDERAL COPYRIGHT LAW. UNAUTHORIZED USE OF THIS MATERIAL MAY RESULT IN CIVIL AND/OR CRIMINAL PENALTIES.

Revisions

△ MOVED 5'-ANGLE: L-45/L-27

Date: 2

MONTECILLO - UNIT 15

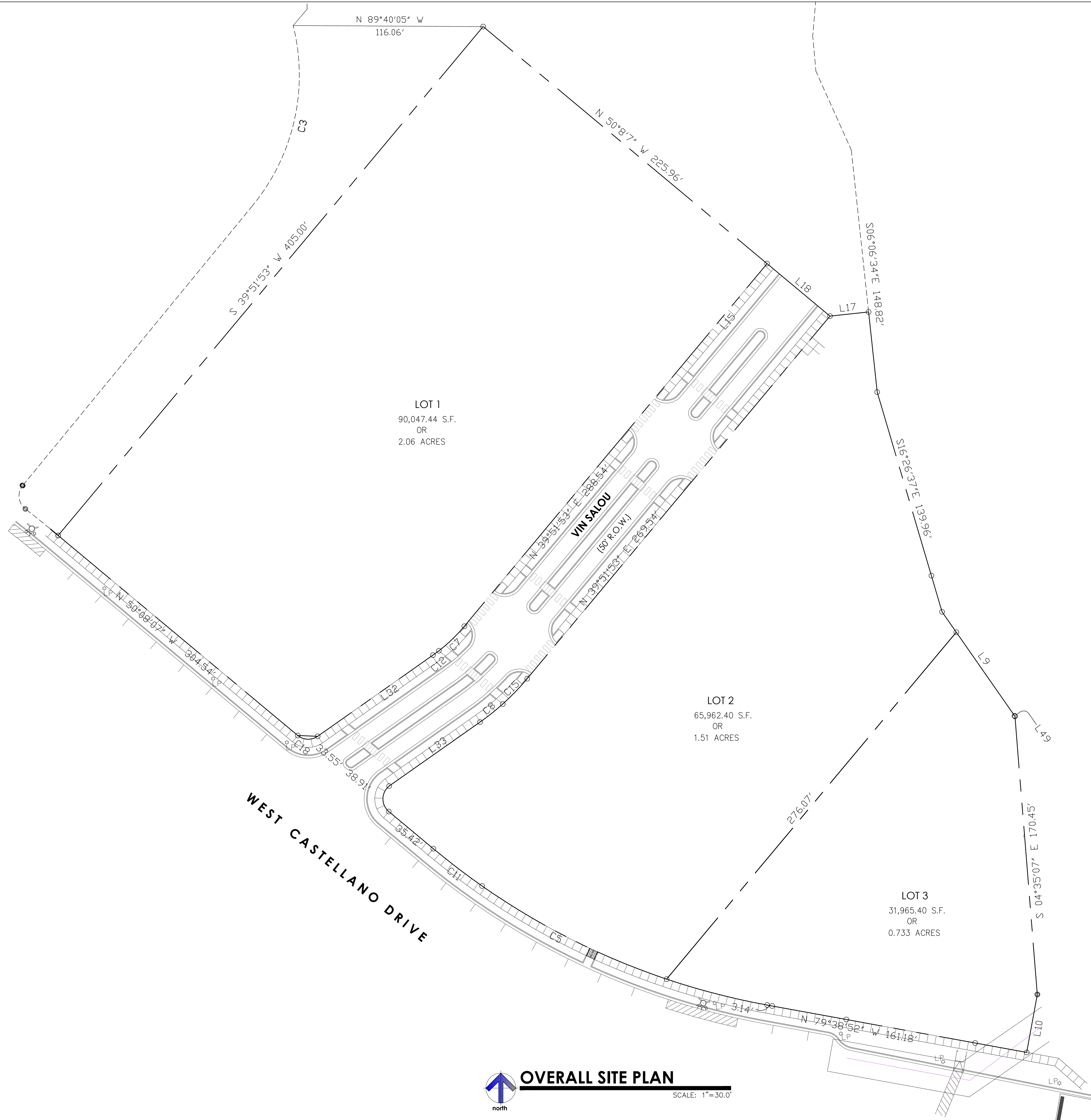
EL PASO, TEXAS 79912

VIN SALOU DRIVE

Sheet Name:
OVERALL SITE PLAN
 Sheet No.

A1.0

Sheet 01 Of 15



LOT 1
 90,047.44 S.F.
 OR
 2.06 ACRES

LOT 2
 65,962.40 S.F.
 OR
 1.51 ACRES

LOT 3
 31,965.40 S.F.
 OR
 0.733 ACRES

WEST CASTELLANO DRIVE

VIN SALOU
 (60' R.O.W.)

OVERALL SITE PLAN
 SCALE: 1"=30.0'

