



10 WEST 100 SOUTH, SALT LAKE CITY, UTAH 84101

PROPERTY HIGHLIGHTS

- Professional Office Environment with Unique Character & Charm
- Suite 450: 2,106 RSF Office
- Suite 621: 900 RSF - Office
- Suite 700: 8,303 RSF Office - Divisible
- Co-Tenants Include: Starbucks, Subway, Cotopaxi & Neighbors City Creek Mall
- Nearby Access to Retail, Restaurant & Transit Options
- Prime Location in the Heart of Downtown within the Central Business District

LEASE RATE: \$26.00/SF Full Service

DEMOGRAPHICS

	1 Mile	3 Mile	5 Mile
Population	15,537	57,003	92,298
Households	28,842	147,819	251,715
Avg. Household Income	\$71,948	\$86,374	\$89,001

TRAFFIC COUNTS

State Street: 31,000 Annual Average Daily Traffic

South Temple: 25,000 Annual Average Daily Traffic

CONTACT

801.617.1700

GAVIN PERRYMAN

WEST HARADIN

GAVIN.PERRYMAN@CRCNATIONWIDE.COM

WEST.HARADIN@CRCNATIONWIDE.COM

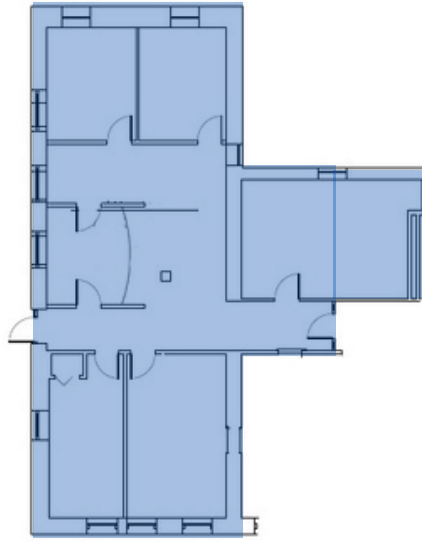


HISTORIC CITY CENTER OFFICE FOR LEASE

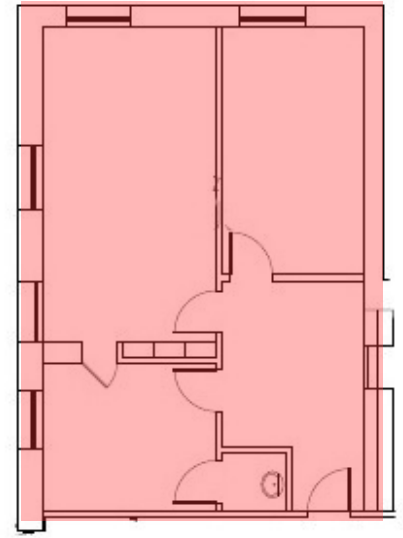
10 WEST 100 SOUTH, SALT LAKE CITY, UTAH 84101



Suite 450: 2,106 RSF

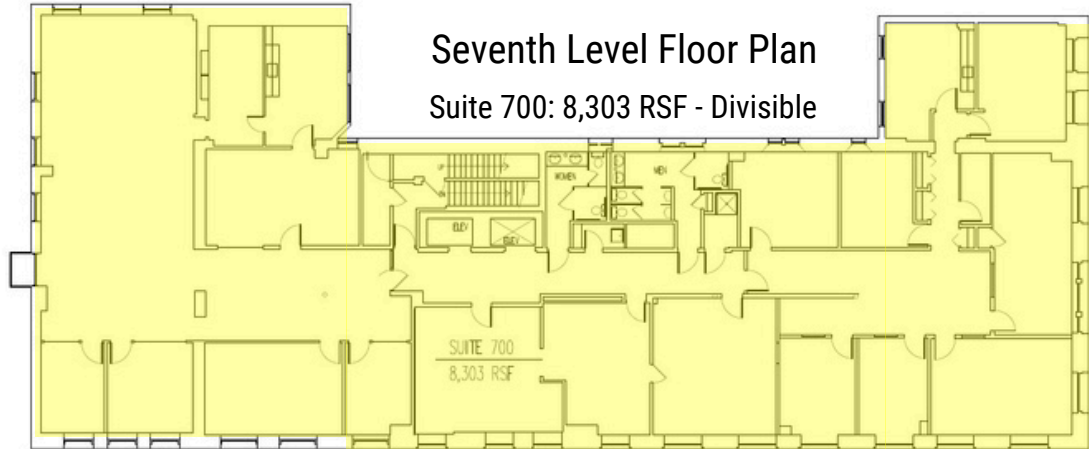


Suite 621: 900 RSF



Seventh Level Floor Plan

Suite 700: 8,303 RSF - Divisible



This information is given with the understanding that all negotiations and/or real estate activity related to the property described above shall be conducted through this cRc Nationwide office. The above information while not guaranteed, was obtained from sources we believe to be reliable.

CONTACT

801.617.1700

GAVIN PERRYMAN |

GAVIN.PERRYMAN@CRCNATIONWIDE.COM

WEST HARADIN |

WEST.HARADIN@CRCNATIONWIDE.COM