

# Oceanside Airport Business Park

614 Airport Rd  
Oceanside, CA 92058

For Sublease

8,117 SF



## Leasing Information:

**Garrick Shupe**

949.415.5031  
gshupe@lpc.com

# Lincoln

Lincoln Property Company  
24422 Avenida De la Carlota, Suite 350  
Laguna Hills, CA 92653

[www.lpc.com](http://www.lpc.com)

# Oceanside Airport Business Park

614 Airport Rd | Oceanside, CA 92058

For Sublease

8,117 SF

Rate Reduced!

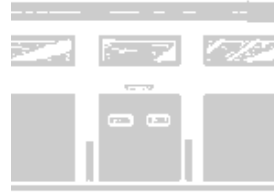


~~\$1.75 PSF~~

\$1.65 PSF Gross



16 spaces



2 (12' x 12') GL



16'



No



± 7,709 SF



± 408 SF



1984

## Property Highlights

- Sublease through March 31, 2029
- Located directly on Hwy-76 offering freeway exposure with easy access to the 5 freeway and is adjacent to Oceanside Municipal Airport
- Recently built out space with new paint, lighting, and concrete epoxy slurry floors
- Fenced yard and potential container space available

Garrick Shupe

949.415.5031

gshupe@lpc.com

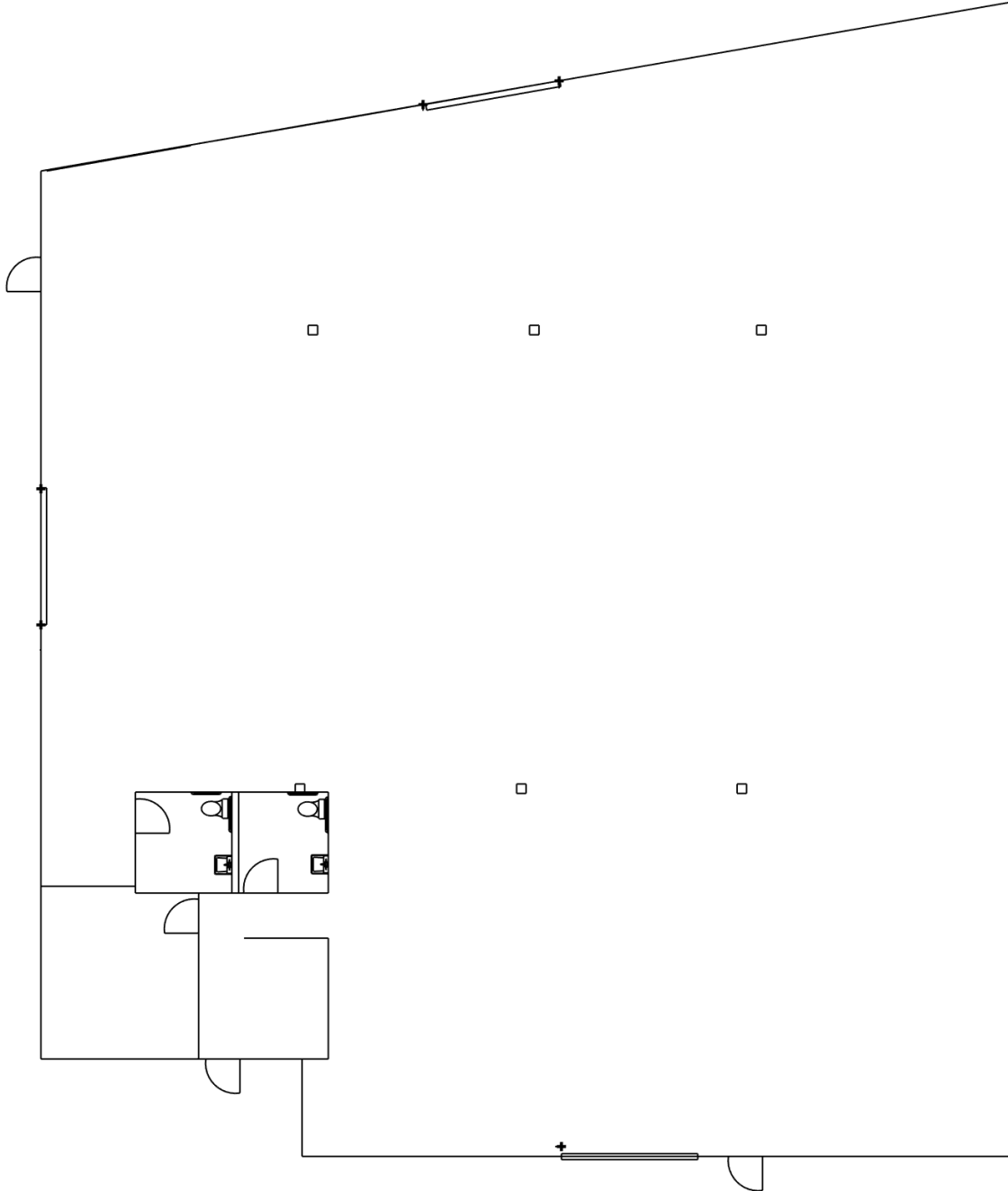
Lincoln

# Oceanside Airport Business Park

614 Airport Rd | Oceanside, CA 92058

Floor Plan

8,117 SF



**Garrick Shupe**

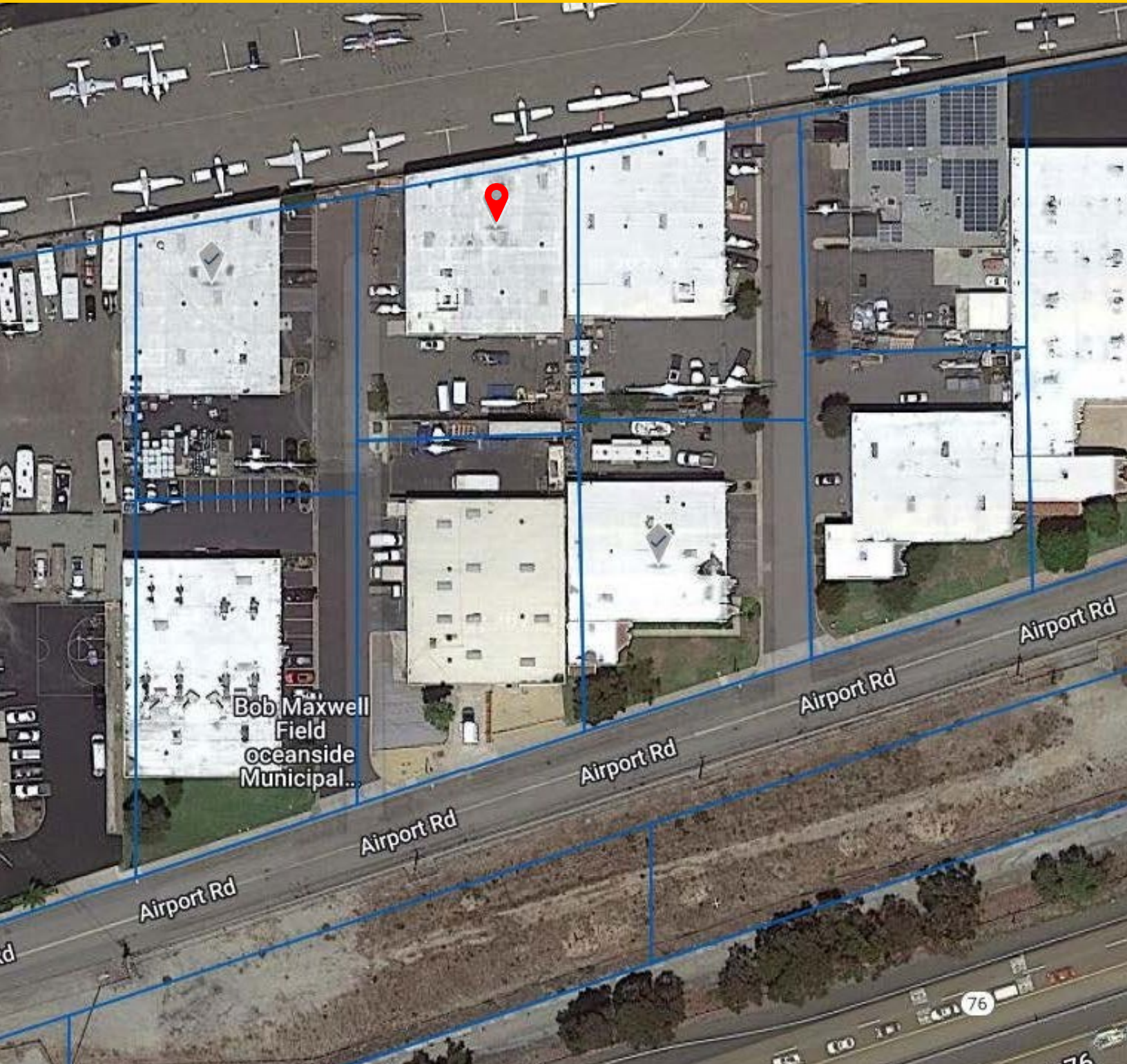
949.415.5031  
gshupe@lpc.com

**Lincoln**

# Oceanside Airport Business Park

Aerial

614 Airport Rd | Oceanside, CA 92058



Garrick Shupe

949.415.5031  
gshupe@lpc.com

Lincoln



## Oceanside Airport Business Park

614 Airport Rd  
Oceanside, CA 92058

**For Sublease**

8,117 SF

### Leasing Information:

**Garrick Shupe**

949.415.5031  
gshupe@lpc.com

# Lincoln

Lincoln Property Company  
24422 Avenida De La Carlota, Suite 350  
Laguna Hills, CA 92653

[www.lpc.com](http://www.lpc.com)