



ZACUTO GROUP
COMMERCIAL REAL ESTATE



110,000 SF 24HR ACCESS
OFFICE | WAREHOUSE
FOR LEASE

15001
FIGUEROA
STREET

Gardena

DETAILS

SIZE

10,000-
110,000 SF

TERM

1-10 years

RATE

\$1.50/SF IG

LOCATION

Gardena

STRATEGIC GARDENA LOCATION

Immediate access to major freeways, optimizing regional distribution and reducing transit times

HIGH-CAPACITY WAREHOUSE

70K SF with up to 30 ft storage height. High power (240V, 420V, 3 Phase) & full HVAC

EFFICIENT LOADING INFRASTRUCTURE

Multiple loading dock positions designed for fast turnaround and streamlined logistics

SECURE, 24/7 OPERATIONS

Gated access with 24 hour entry, including Sundays

AMPLE ON-SITE PARKING

38 spaces accommodating standard vehicles & box trucks, with overnight parking capability

LISTING TEAM



ANDREW SINASOHN

Executive Vice President

310.469.9023

andrew@zacutogroup.com

DRE# 01951740

JACOB DE LA HOYA

Director

213.509.8899

jacob@zacutogroup.com

DRE# 02243676



FOR LEASE

15001 S FIGUEROA STREET, GARDENA, CA 90248





15001
FIGUEROA
STREET
Gardena





15001

FIGUEROA
STREET

Gardena

FOR LEASE

15001 S FIGUEROA STREET, GARDENA, CA 90248

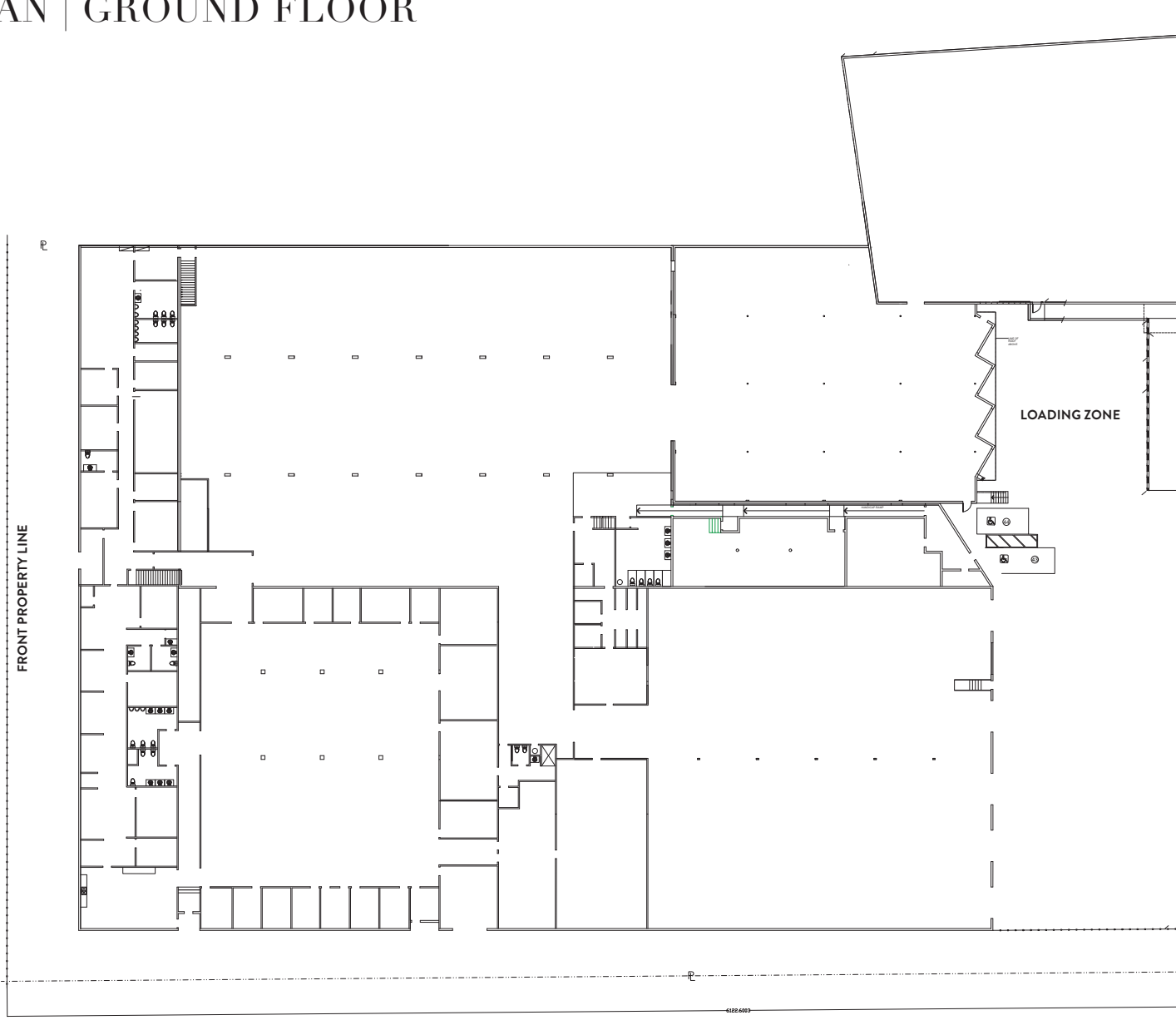


FOR LEASE

15001 S FIGUEROA STREET, GARDENA, CA 90248

FLOOR PLAN | GROUND FLOOR

FIGUEROA STREET

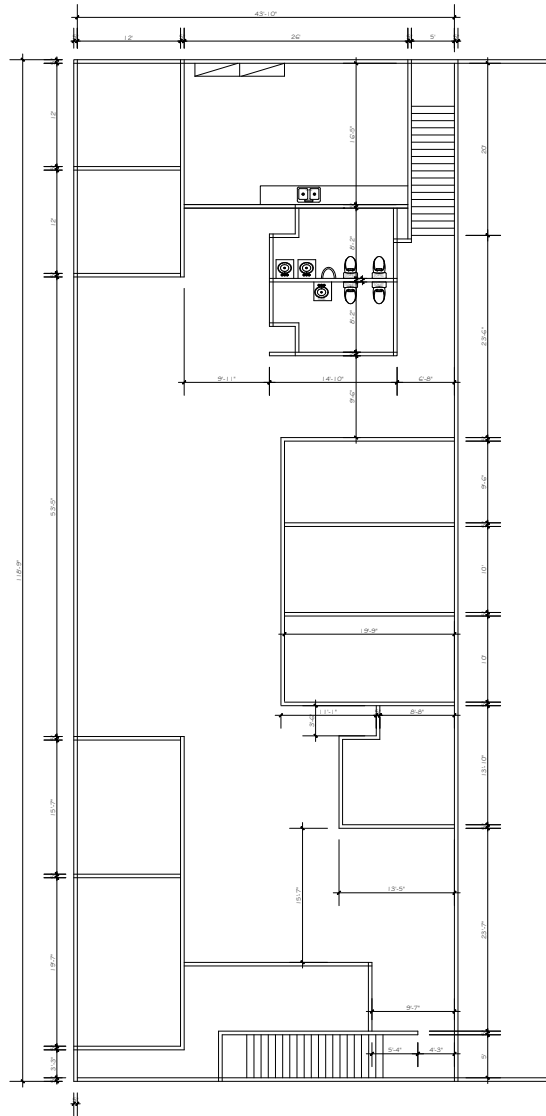


FOR LEASE

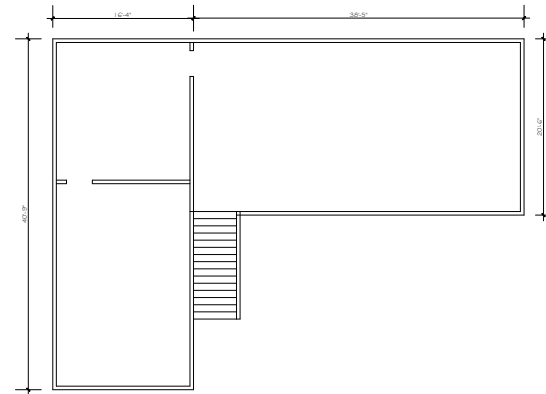
15001 S FIGUEROA STREET, GARDENA, CA 90248

FLOOR PLAN | SECOND FLOOR

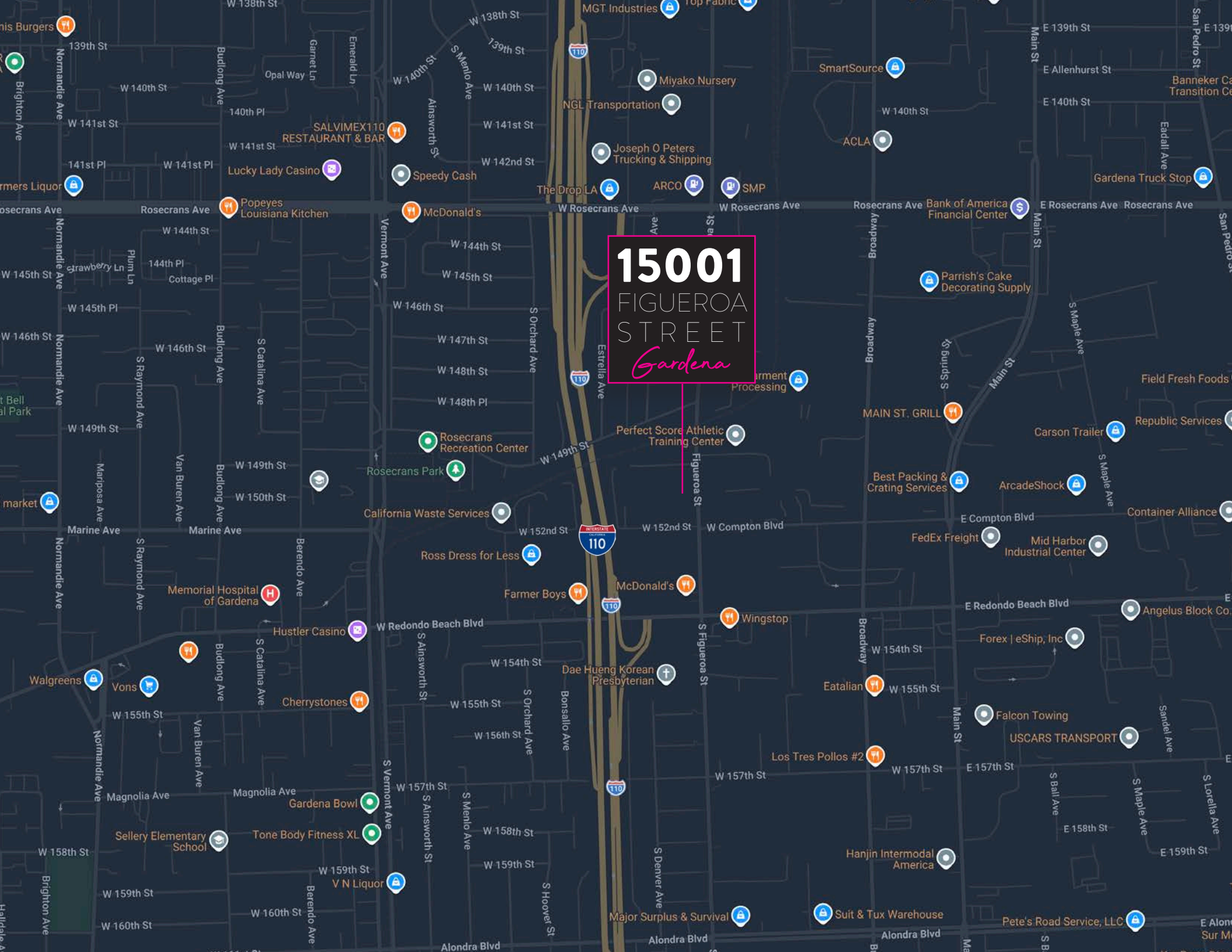
OFFICE AREA - 5,204 SF



WAREHOUSE - 1,440 SF



15001
FIGUEROA
STREET
Gardena



15001

FIGUEROA
STREET

Gardena



ZACUTO GROUP
COMMERCIAL REAL ESTATE

ANDREW SINASOHN

Executive Vice President

310.469.9023

andrew@zacutogroup.com

DRE# 01951740

JACOB DE LA HOYA

Director

213.509.8899

jacob@zacutogroup.com

DRE# 02243676

No warranty, express or implied, is made as to the accuracy of the information contained herein. This information is submitted subject to errors, omissions, change of price, rental or other conditions, withdrawal without notice. All parties who receive this material should not rely on it, but should use it as a starting point of analysis, and should independently confirm the accuracy of the information contained herein through a due diligence review of the books, records, files and documents that constitute reliable sources of the information described herein. Logos and images are for identification purposes only and may be trademarks of their respective companies. All terms provided are approximate. Leasee to verify. 3/2026

ZACUTOGROUP.COM | 310-469-9300

