

An architectural rendering of a modern urban building named Jaeger Square. The building features large glass windows and a brick facade. People are shown walking on the sidewalk, sitting at outdoor tables, and a dog is running. The scene is set in a city environment with trees and a street lamp.

# JAEGER SQUARE

A **PIZZUTÌ** DEVELOPMENT

**ROTH**

REAL  
ESTATE  
GROUP

# Contents

OVERVIEW	03
PROPERTY DETAILS	04
UNPARALLELED AMENITIES	06
DESIGN	07
SUSTAINABILITY	09
RETAIL EXCELLENCE	10
FLOOR PLANS	11
RENDERINGS	14
NEIGHBORHOOD	22
COLUMBUS	25
LOCAL MARKET	29
ACCESSIBILITY	32
NEARBY RETAILERS	33
RESOURCES	35
ROTH REAL ESTATE GROUP	36

# JAEGER SQUARE





03

## JAEGER SQUARE

Welcome to Jaeger Square, where modern luxury meets historic charm in Columbus, Ohio. This premier mixed-use development offers refined, amenity-rich living spaces in the heart of Schumacher Place, German Village, and Merion Village. Set to open in Spring 2025, Jaeger Square is poised to become the city's most sought-after address for those seeking a vibrant urban lifestyle.



# Property Details

Jaeger Square is a visionary mixed-use development featuring 261 upscale residential units, 8,250 square feet of prime retail space, and 262 parking stalls. Designed to blend seamlessly with its historic surroundings, this project offers a unique combination of modern amenities and timeless architecture.

04



## LOCATION

850 Jaeger St.  
Columbus, OH 43206

## SQUARE FOOTAGE

8,250 SF Retail

## PROJECT SIZE

261 Residential Units  
262 Parking Stalls

## PROJECT TYPE

Mixed-Use, Multi-Family, Retail

## DEVELOPMENT OPTIONS

Build to Suit or Rent Existing

## ESTIMATED COMPLETION

Spring 2025



With varying design languages—walk-up units with pocket gardens, façade relief, articulation and setbacks, an art program, heavily landscaped areas and green roofs—as well as residential and retail frontages on all elevations, it responds to the dynamic elements that make the neighborhood a place of discovery.

## Jaeger Square. A new discovery every day.

05





# Unparalleled Amenities and Features

Jaeger Square is more than just a building; it's a carefully curated ecosystem designed to foster community, creativity, and commerce.

## RETAIL EXCELLENCE

8,250 SF of ground-floor retail, perfect for dining, shopping, and entertainment.

## PUBLIC ART

Public art by globally recognized artists.

## PRIME LOCATION

Located in one of Columbus' most walkable neighborhoods.

## AMENITIES

Fitness center, yoga studio, podcast studio, rooftop solarium, co-working space, artist studio, clubroom, and 15,000 SF of outdoor amenities.

## GREEN SPACES

Rooftop gardens, street planters, and landscaped public seating areas in addition to being adjacent to Schiller Park.



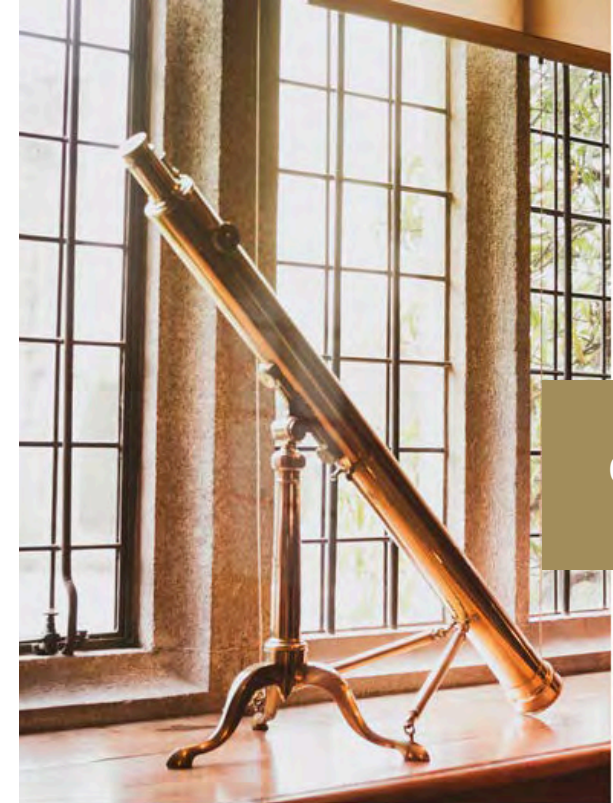
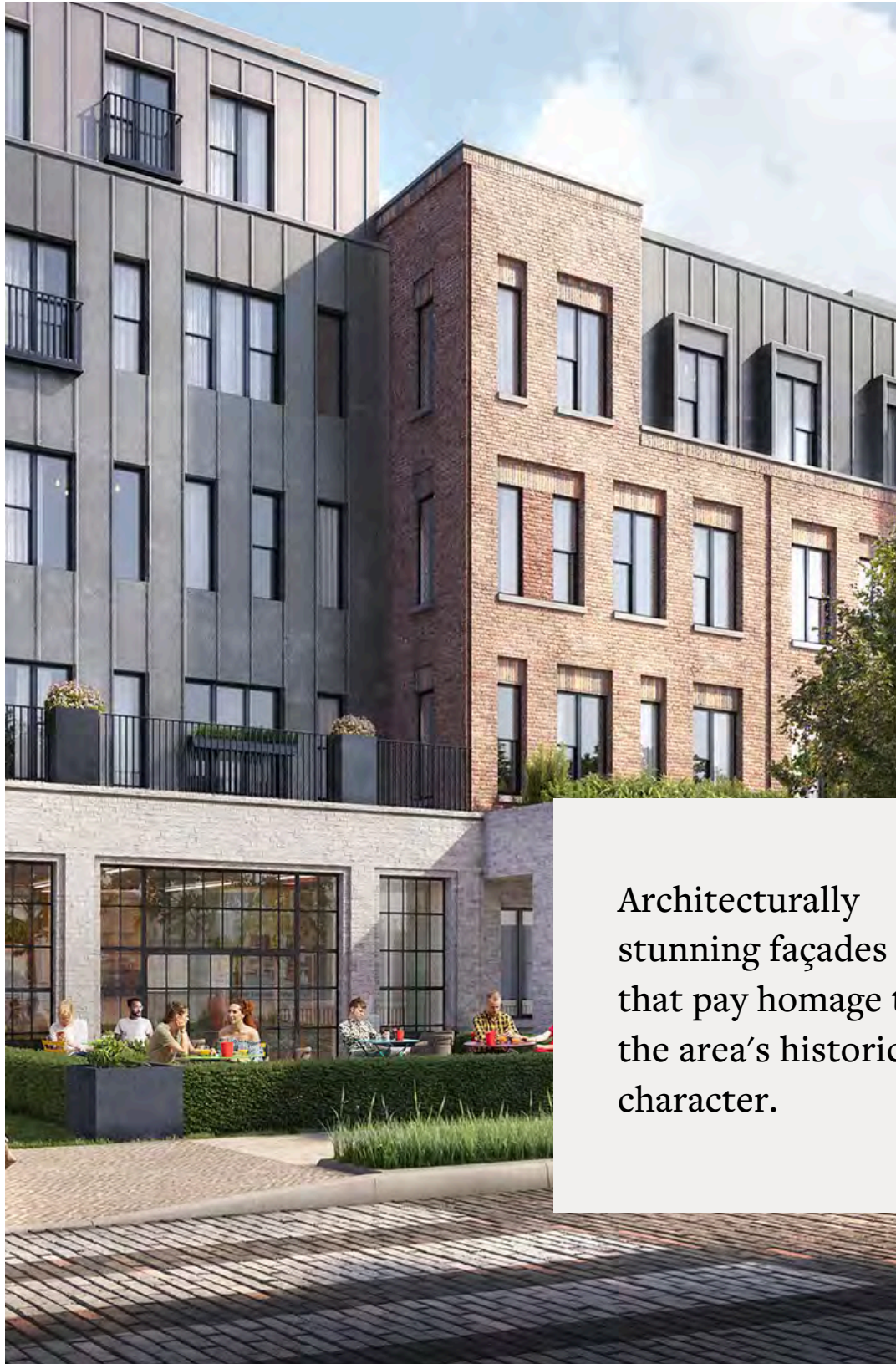


# JAEGER SQUARE



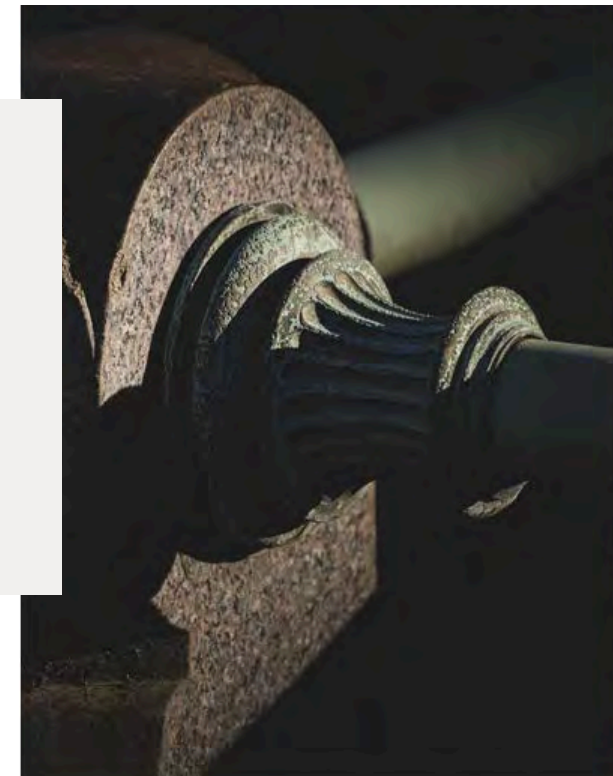
## Redefining Urban Elegance

The project's thoughtful design ensures a seamless integration with the historic fabric of the surrounding neighborhoods, creating a unique destination that honors the past while embracing the future.



08

Architecturally  
stunning façades  
that pay homage to  
the area's historic  
character.





## Sustainability

The newly expanded East Whittier Street will be an accessible, walkable, sustainable block in South Columbus that advances the city's forward momentum. By supporting existing businesses and fostering new ones, this will spur further investment and the development of more amenities to create a stronger economy for the greater neighborhood.

**Cutting-edge sustainability features, including green roofs and energy-efficient systems.**

---

JAEGER  
SQUARE

---

# A Canvas for Retail Excellence

Jaeger Square offers flexible retail spaces designed to accommodate a variety of business needs. The ground floor boasts 8,250 square feet of prime retail space and features high ceilings, expansive storefronts, and state-of-the-art infrastructure to support diverse commercial ventures. Leasing terms are tailored to suit the unique requirements of each tenant, ensuring a mutually beneficial partnership. Retail tenants at Jaeger Square have the convenience of securing up to 10 street parking passes per business, available at an annual rate of \$155 per pass. Street parking is also available for free for up to three hours.

This space is an exceptional opportunity for businesses to thrive in a high-traffic, affluent area, ideal for upscale boutiques, gourmet eateries, and bespoke service providers.

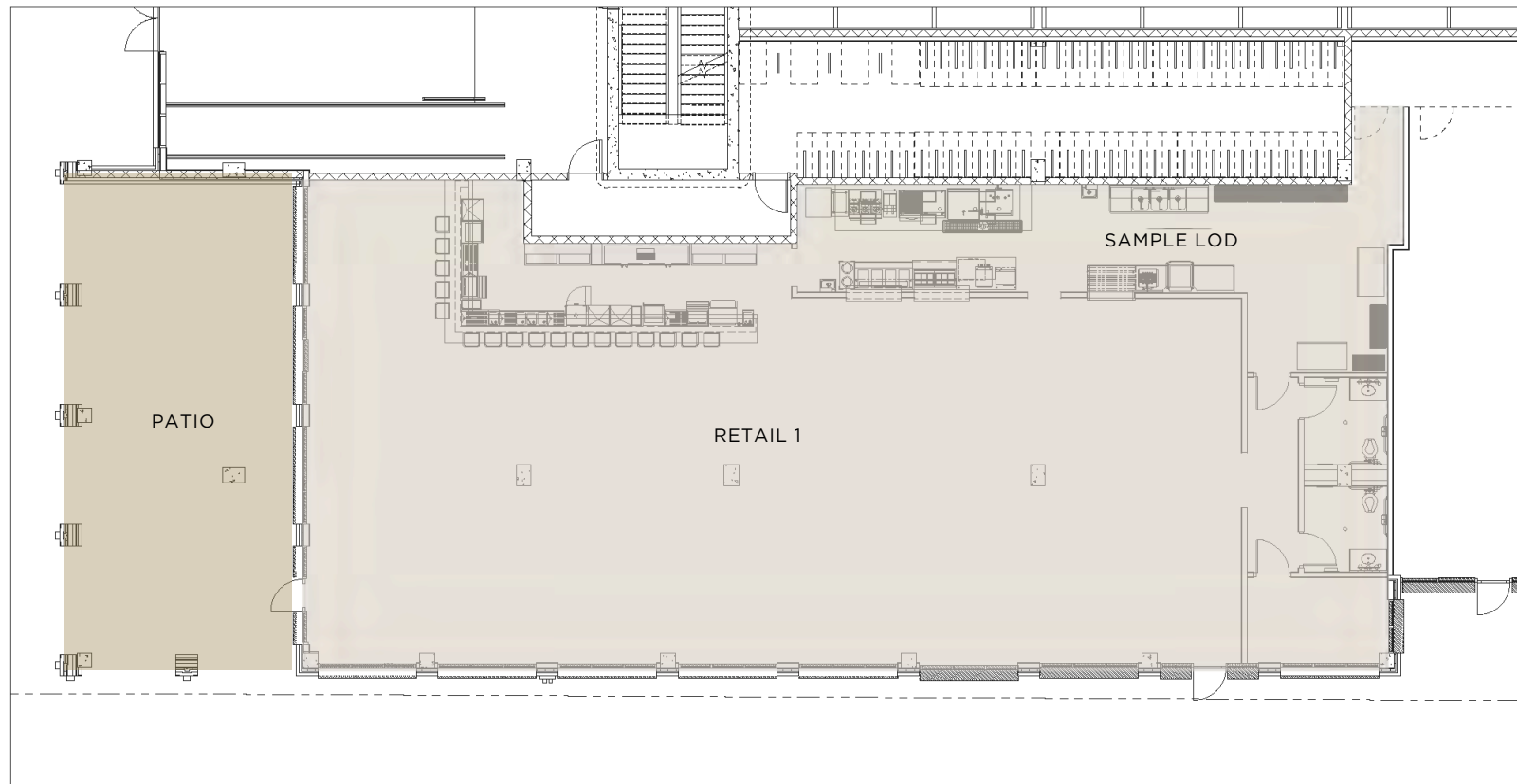


10

With 1,500 to 8,250 SF of prime retail space available, Jaeger Square invites visionary entrepreneurs to be part of a transformative urban experience.



# JAEGER SQUARE



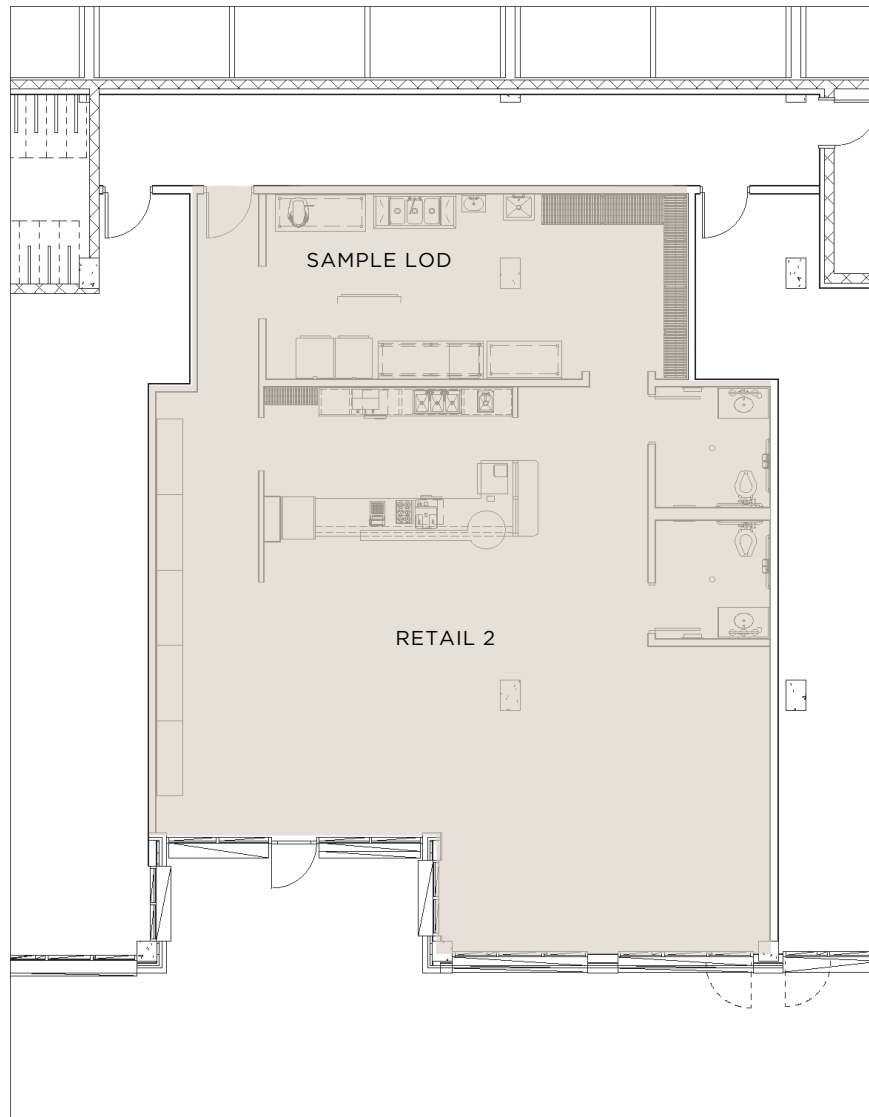
EAST WHITTIER STREET

COVERED PATIO 942 SQ. FT.

\* CONCEPTUAL ONLY

Retail One 4,293 SQ. FT.

# JAEGER SQUARE

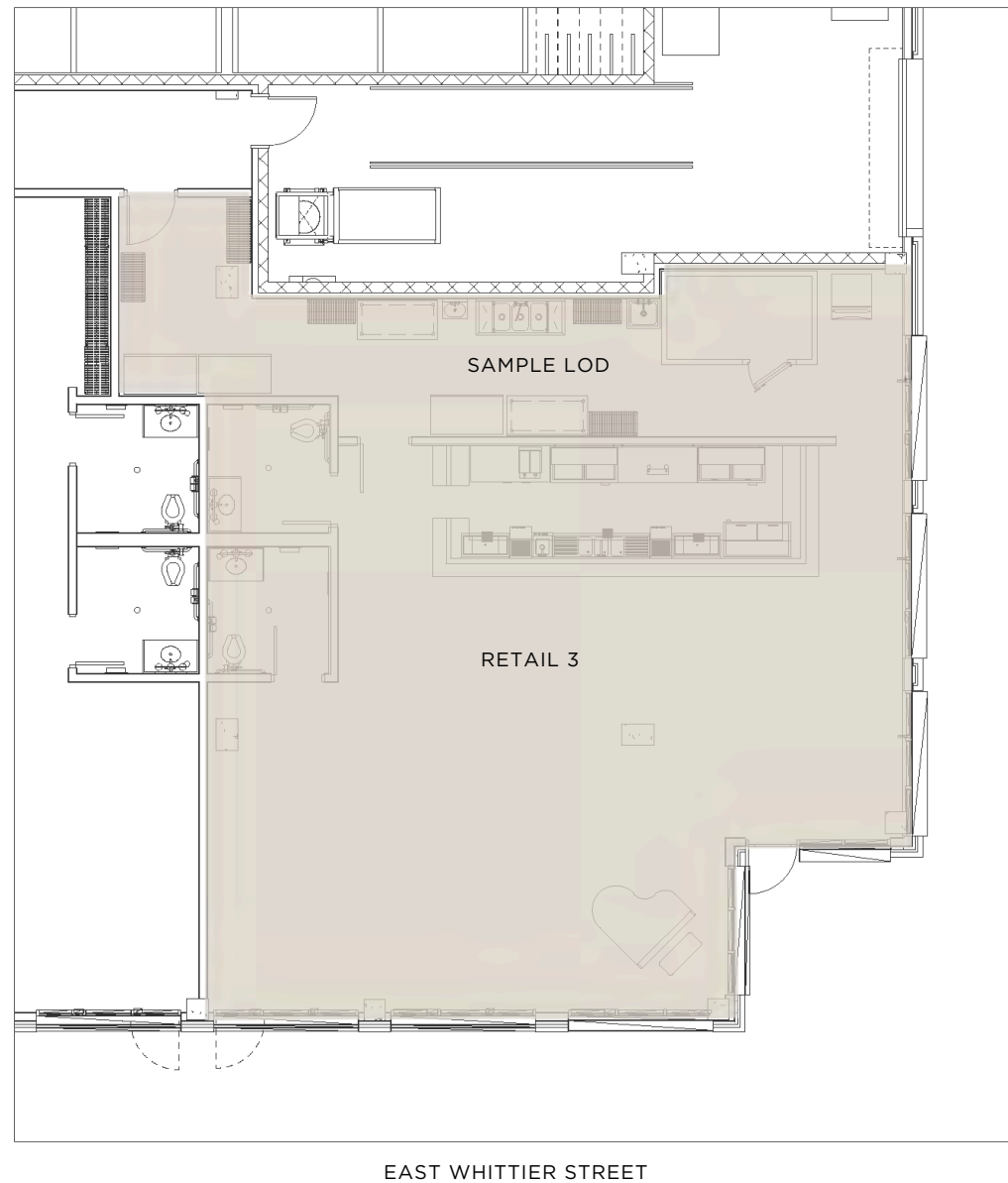


EAST WHITTIER STREET

\* CONCEPTUAL ONLY

Retail Two 1,900 SQ. FT.





# JAEGER SQUARE

\* CONCEPTUAL ONLY

Retail Three 1,911 SQ. FT.





14

RENDERINGS

# Astonishing Views





## Kossuth Street View

To the north, the project's architecture reflects the surrounding buildings in both density and material. This is accomplished through varied roof forms and textured materials, its presence is familiar and contextual. Kossuth Street features large trees and additional landscaping to complement the neighborhood year-round. Resident entries are defined with colorful doors, awnings, gardens, iron railings, and window boxes. The Kossuth Street garden, located midway through the block, includes public seating and provides opportunities for public art and for neighbors to socialize.



## Whittier Street View

The Whittier façade and associative landscape is one that supports a rich and lively street experience indicative of walkable, pedestrian-friendly urban environments. Marked by large areas of storefront glass with rhythmic masonry infill, the environment will be one that is transparent and measured for people. Sidewalk cafe seating and retail entrances are enhanced by brick-edged tree planters featuring trees and ornamental shrubs. The building is set-back at the second-floor level, providing an additional green roof opportunity that creates a visual interest at-grade and also serves to soften the building façade.







## Jaeger Street View

At the junction of Jaeger and Lansing Streets, the building compresses inwards to create a thoughtful, transitional space adjacent to the public thoroughfare. The development's "front door" occurs through a meandering garden passage. The setback provides an additional area for public art, ornamental trees, tables, and gathering space, and is located adjacent to the project's co-working space. Green roofs, front gardens with iron railings, and street planters enhance the Jaeger Street sidewalk environment.



## Grant Avenue View

Along Grant Avenue, the project reinforces an urban environment by turning what would otherwise be a typical service alley into a north-south corridor designed to provide opportunities for additional at-grade residential units, vehicular access, retail frontage, and service zones. Varied building setbacks along Grant Avenue provide opportunities for rooftop gardens on the second floor as well as landscaping and trees at the street-level. The building façade is enhanced with vine covered green walls and public art.







## Kossuth Elevation

Built as a reflection of the vernacular, the development's presence on Kossuth is one that captures the spirit of the urban life in Schumacher Place. Walk-up stoops, public art, and scaled interventions punctuate the streetscape.



## Jaeger Setbacks

Jaeger is marked as a transition between Whittier street and the neighborhoods to the west and north. The buildings step inward vertically and horizontally to create relief and green space at the street, creating both porches and gardens emblematic of the neighborhood.







## Whittier & Jaeger

The corner of Whittier and Jaeger aims to capture the life and vibrancy of the development. Flexible indoor/outdoor space supports active street frontage, while building profiles and façades invoke the highly textural and material affect of the urban corridor.



WELCOME TO  
German Village

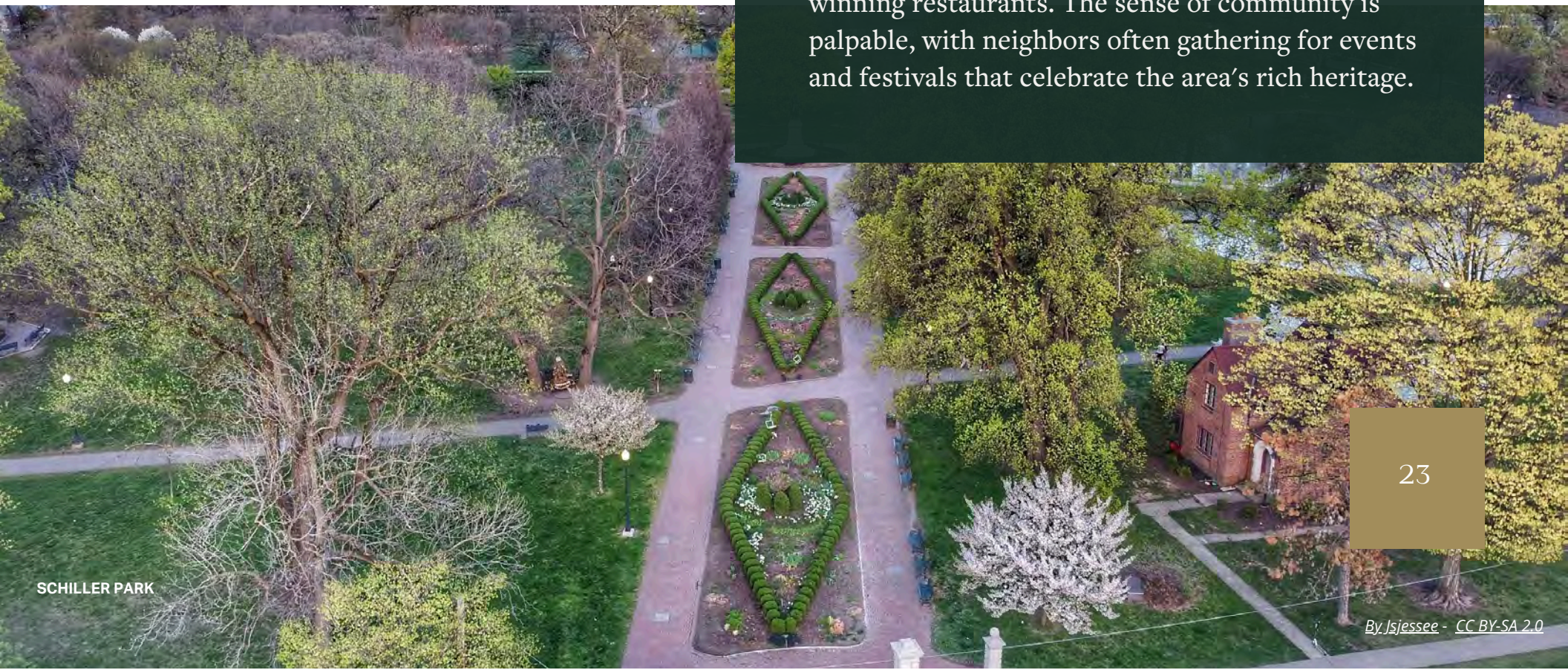


German Village is a historic and charming neighborhood located just south of downtown Columbus, Ohio. Known for its picturesque brick-lined streets, beautifully preserved 19th-century architecture, and vibrant community spirit, German Village has become one of the most desirable areas in the city.

The neighborhood's history dates back to the mid-1800s when German immigrants settled in the area, bringing with them their culture, traditions, and architectural styles. Today, German Village stands as a testament to historic preservation, with many of its original structures meticulously restored and maintained.

One of the most striking features of German Village is its distinctive atmosphere. The narrow streets, lined with brick sidewalks and mature trees, create an intimate and walkable environment. The neighborhood's charm is further enhanced by its mix of residential and commercial spaces, allowing residents and visitors to enjoy a truly urban village experience.

The neighborhood's vibe is a perfect blend of historic charm and modern amenities. Residents and visitors alike can enjoy strolling through Schiller Park, browsing unique shops, or dining at award-winning restaurants. The sense of community is palpable, with neighbors often gathering for events and festivals that celebrate the area's rich heritage.



SCHILLER PARK





An inspiring response to the market demand for location, size, quality, and design, Jaeger Square is the right next step in moving the neighborhood and the city forward.

Since Columbus' founding, the blocks in and around German Village have seen both prosperity and struggle. Many of the first European immigrants to Columbus landed here, living in homes on these beautifully brick-paved streets and working in breweries, bakeries, and tanneries in the neighborhood. They were among those who made Columbus what it is today. It is with careful consideration of the location's culturally meaningful past that Jaeger Square ushers in an exciting step forward for the city's most historic and desirable area.

---

JAEGER  
SQUARE

---



# Columbus, OH

“Columbus, Ohio,  
A Hidden Gem In  
Plain Sight”

Forbes

25

Columbus is one of the fastest-growing cities in the Midwest. In fact, Columbus has the most population growth out of any metropolitan city in the U.S. Vibrant and alive, Columbus is known for its public-private collaborations and entrepreneurial spirit.

**RANKED #5 IN THE TOP  
10 PLACES FOR YOUNG  
PROFESSIONALS TO  
LIVE IN 2024**

TOP 10 BEST CITIES  
TO MOVE TO IN 2024

**Forbes** HOME

BEST DESTINATIONS FOR  
CULINARY TRAVEL 2024

**ESSENCE**

#3 BEST BEER  
CITIES IN THE US

**10 USA TODAY**  
**10Best**



(Columbus) has a nearly Sun Belt-esque buoyancy about it these days, as it welcomes all-comers, from all over the world, into the ever-growing fold. ... Seriously, don't sleep on this city. Good things are happening.

- Food & Wine  
2019's list of 32 Places To Go (And Eat) in 2019

**902K**

TOTAL POPULATION

**\$63K**

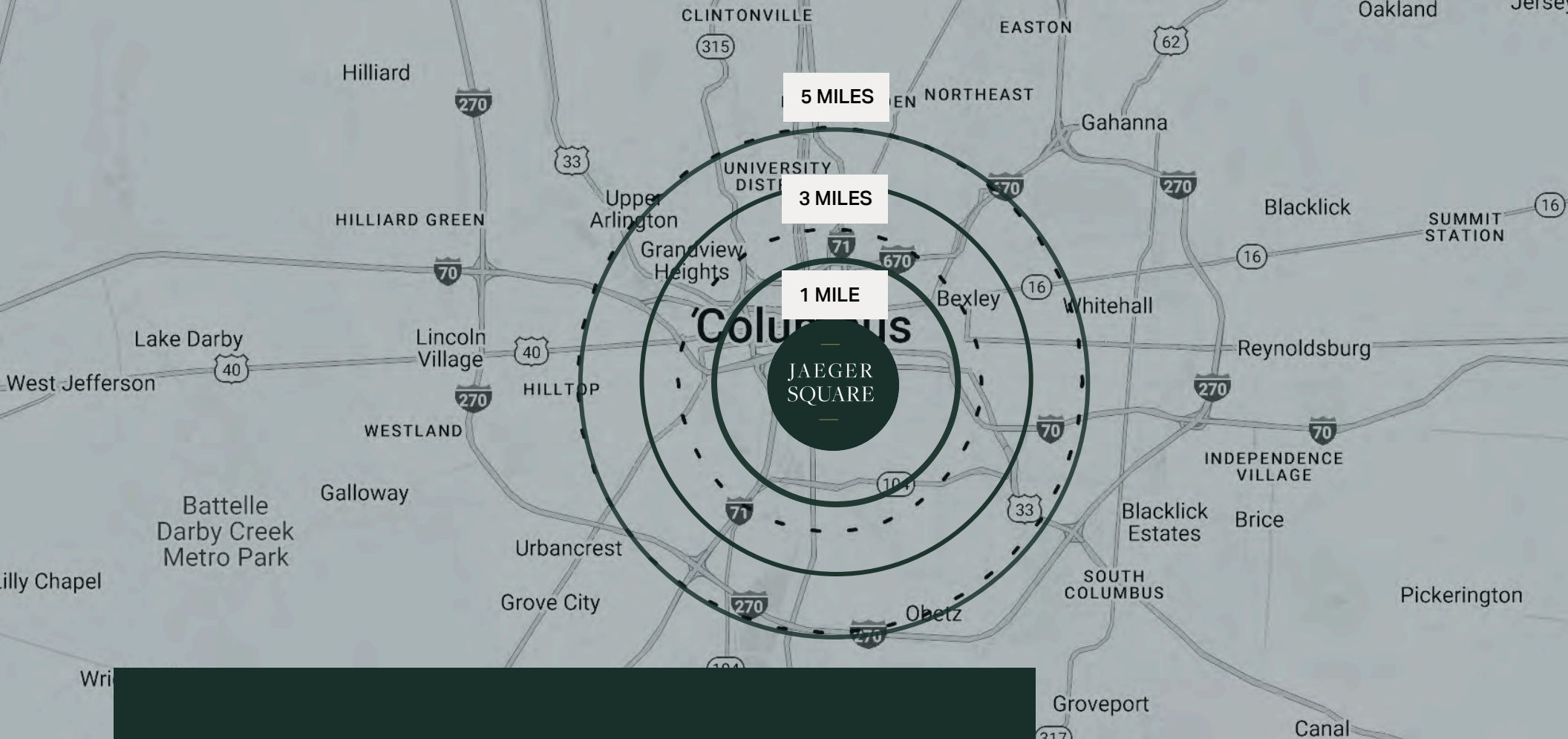
MEDIAN HOUSEHOLD  
INCOME

**\$213K**

MEDIAN HOME VALUE

*Demographics data derived from Data USA.*





# Demographics

	1 MILE	3 MILES	5 MILES
TOTAL POPULATION	38.4K	172K	430K
MEDIAN HOME VALUE	\$438.5K	\$333.2K	\$263.1K
MEDIAN AGE	33	31	32

Demographics data derived from Crexi and AlphaMap



COLUMBUS, OH

# A Top Destination for New Restaurants

## ECONOMIC VIABILITY

The cost of real estate in Columbus is relatively lower compared to other major cities, making it an attractive location for starting or expanding a restaurant business. This economic advantage, coupled with a diverse population, supports a wide range of culinary ventures.

## CULINARY INNOVATION + DIVERSITY

Columbus is recognized as one of America's top food cities, offering a vibrant and innovative culinary scene. This includes a mix of classic favorites and bold new creations, contributing to its reputation as a foodie's paradise.

## GROWING POPULATION

Columbus offers a unique blend of urban, suburban, and rural areas, making it a melting pot for various consumer demographics. The presence of a large university and a growing population further enhance its attractiveness as a market for restaurants.



## FRANKLIN COUNTY

# Local Market Overview

Franklin County is a vibrant region with a diverse economy and a strong community spirit. The county is known for its excellent infrastructure, educational institutions, and cultural amenities. With a focus on economic development, Franklin County offers numerous resources for businesses, including support programs and networking opportunities.

The county's commitment to growth is evident in its ongoing investments in public infrastructure and community services. This supportive environment makes Franklin County an ideal location for businesses looking to expand and thrive.

## INNOVATION FOR BUSINESS

Franklin County and the Columbus Region have received numerous accolades that highlight their attractiveness to businesses, including retailers. The region is recognized as a top-ranked business climate with a strong economy and a prepared workforce. It has been named the No. 1 Rising City for Startups and has grown multiple unicorn companies, showcasing its potential for innovation and business success.

## ECONOMIC INFRASTRUCTURE

Franklin County stands out in terms of retail growth due to its strategic location and robust economic infrastructure. The Columbus Region is a leader in population, job, and GDP growth, outpacing other major Midwest metros. This growth is supported by a diverse economy that includes key sectors such as retail, logistics, healthcare, and finance. The region's central location provides unparalleled market access, with the ability to reach 45% of the U.S. population within a one-day drive, which is a significant advantage over other cities.



97%

EMPLOYMENT RATE

1.32M

TOTAL POPULATION

\$71,070

MEDIAN HOUSEHOLD  
INCOME

\$243,100

MEDIAN HOME VALUE

42.3%

BACHELOR'S DEGREE  
OR HIGHER

The Columbus Region's status as a top destination for tourism, with over 51 million visitors annually, further boosts retail demand. Tourism supports over 82,500 jobs in the region and generates significant revenue for local businesses, including retail establishments. This influx of visitors provides retailers with a steady stream of potential customers, enhancing the overall retail market in Franklin County.



OHIO RANKED #7  
AMERICA'S TOP STATES  
FOR BUSINESS 2024



RANKED #3 IN  
AMERICA'S BEST  
COUNTIES 2024

## COUNTY DEMOGRAPHICS

# Franklin County

Franklin County boasts a diverse population that contributes to its dynamic economy. The county is home to a mix of urban and suburban communities, providing a rich tapestry of cultural experiences and economic opportunities.



#1

POPULATION, JOB  
AND GDP GROWTH

2M+

RESIDENTS

\$130B

GDP

90

WALK SCORE®  
WALKER'S PARADISE

## DEMOGRAPHICS

## A Thriving Market of Affluent Consumers

---

JAEGER  
SQUARE

---

The neighborhoods surrounding Jaeger Square boast a diverse and affluent population, creating a vibrant community atmosphere. The area attracts a mix of young professionals, established families, and cultured retirees, all drawn to the unique blend of historic ambiance and modern amenities.



JOHN GLENN  
COLUMBUS  
INTERNATIONAL  
AIRPORT

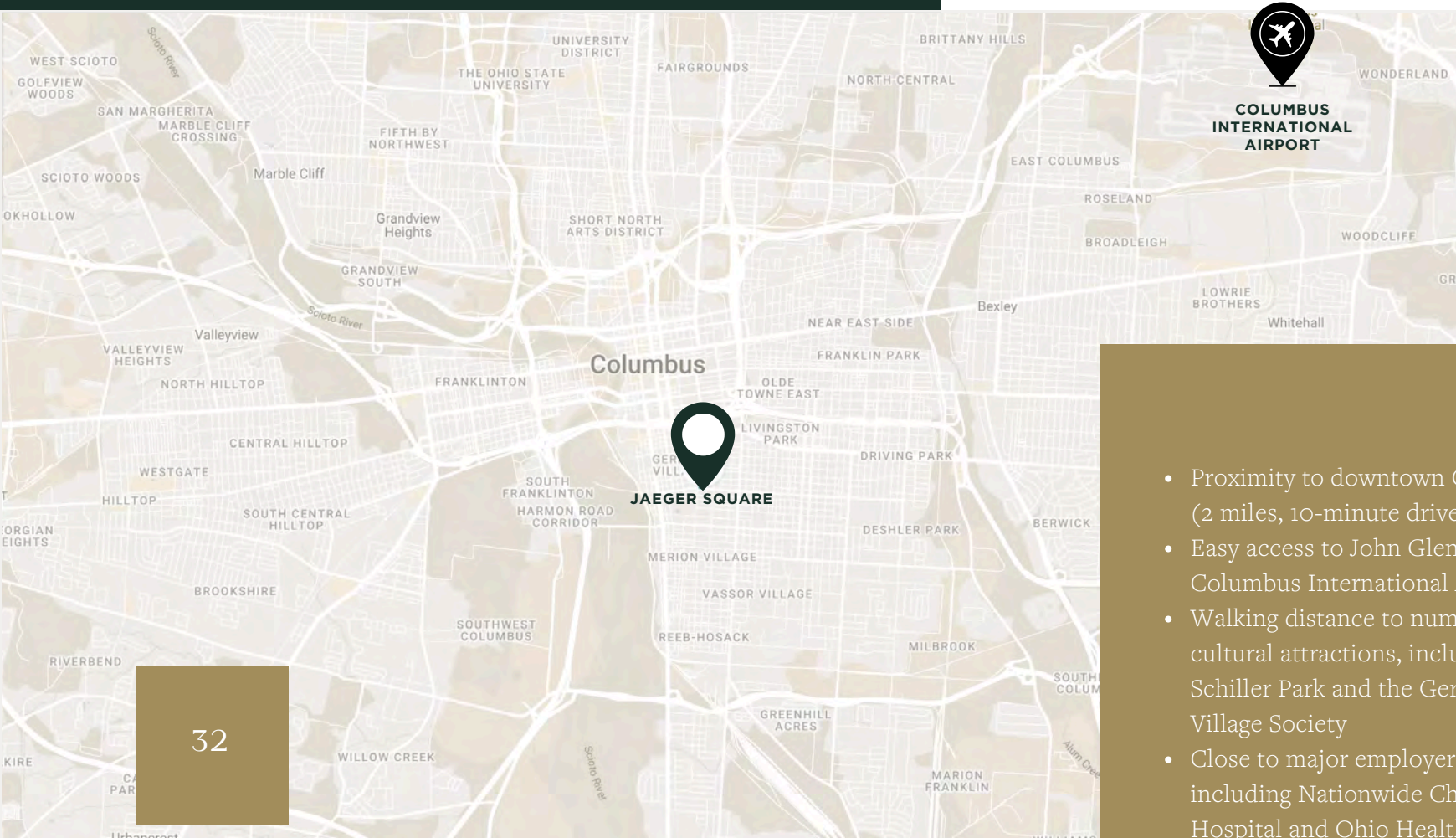
8 MI | 15 MINS

RICKENBAKER  
AIRPORT

10.4 MI | 23 MINS

ACCESSIBILITY

# Right in the Heart of Columbus



- Proximity to downtown Columbus (2 miles, 10-minute drive)
- Easy access to John Glenn Columbus International Airport
- Walking distance to numerous cultural attractions, including Schiller Park and the German Village Society
- Close to major employers, including Nationwide Children's Hospital and Ohio Health



## Nearby Retailers

## SHOPPING

Franklin Art Glass  
Studios, Inc.  
Hausfrau Haven  
Helen Winnemore's  
Pet Wants  
Schmidt's Fudge Haus  
Stump  
The Book Loft  
The Cakehound  
The Red Stable  
Tiki Botanicals  
Urban Sundry  
Vernacular

## GROCERY + MARKETS

German Village  
Makers Market  
GV Farmer's Market  
Saint Mary's Farmer's  
Market  
Village Petals

## FITNESS + HEALTH

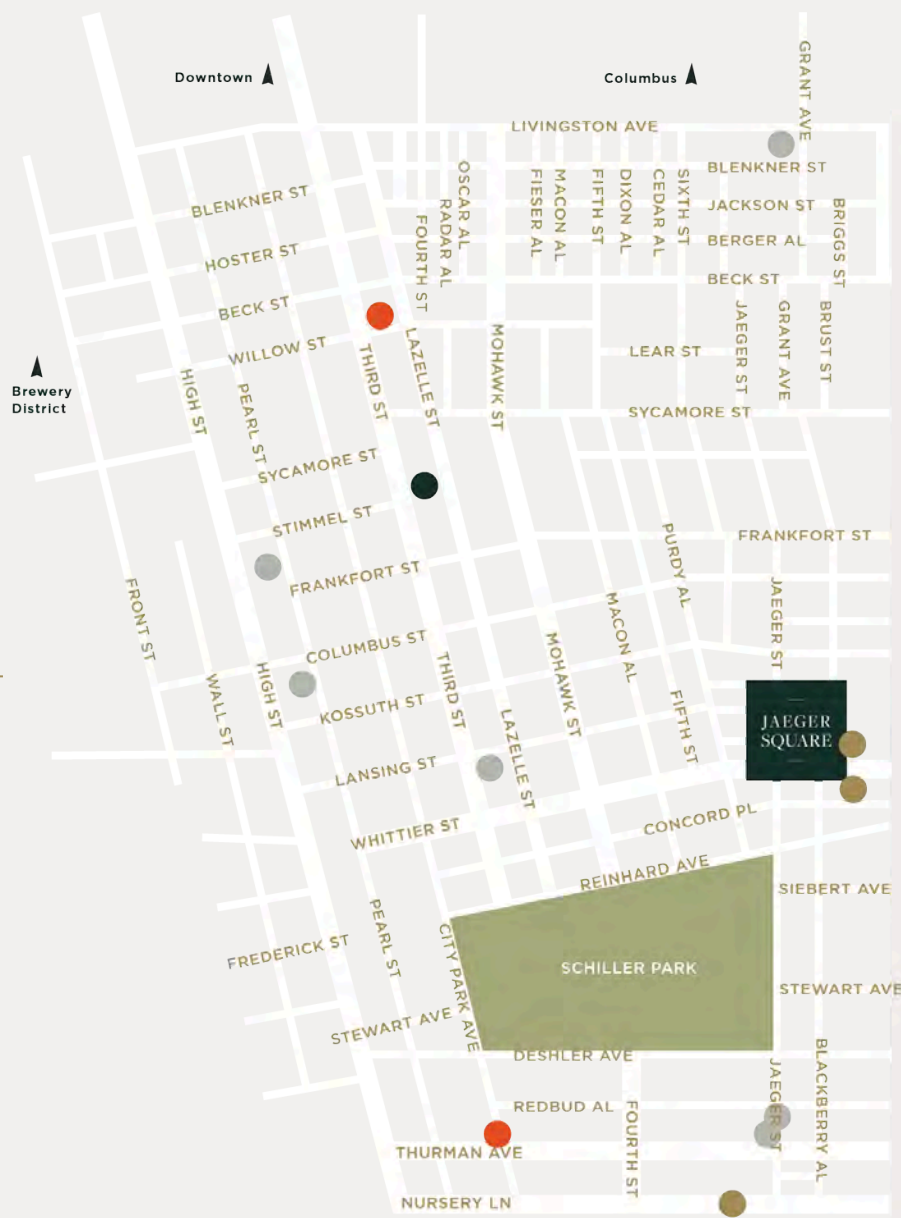
GoYoga  
GIVE Yoga  
AYA Yoga  
The Butcher Shop  
Fitness  
Snap Fitness  
BOSS Fitness Studio

## DINING

Alchemy Juice  
Antiques On High  
Alpine Restaurant & Bar  
Arepazo Tapas  
Ash and Em  
Barcelona Restaurant & Bar  
Beck Tavern  
Bendi Wok n' Bar  
Bistolino Old World Kitchen & Bar  
Brown Bag  
Delicatessen  
Cento  
Chapman's Eat Market  
Chocolate Café Express  
Club 185  
Club Diversity  
Comune

Daily Growler (South)  
Double Take Bar & Grill  
Emmett's Café  
Fox in the Snow Cafe  
German Village  
Coffee Shop  
Grosso's  
Harvest Pizzeria  
Hey Hey Bar & Grill  
High Beck Tavern  
Jeni's Splendid Ice Creams  
Jony's Sushi  
Katzingner's Delicatessen  
Kittie's Cakes  
Lawbird  
Lindey's  
Mid City Garage  
Parsons North Brewing

Pistacia Vera  
Planks Bier Garten  
Schmidt's Sausage Haus  
Skillet  
Smoked on High BBQ  
South Village Grille  
Starbucks  
Stauff's Coffee Roasters  
Sycamore  
The Old Mohawk  
The Red Brick Tap & Grill  
The Thurman Cafe  
Tony's Italian Ristorante  
Tremont Lounge  
Valters at the Maennerchor  
Village Coney  
Winans Chocolates &  
Coffees







## Welcoming what's to come for Columbus.

Refined retail excellence at the meeting of beloved and historic neighborhoods, Jaeger Square is an ideal setting for sophisticated dining, commerce, and entertainment.





# JAEGER SQUARE

## Property Info

[SITE PLAN](#)

[GOOGLE MAP](#)

[JAEGER SQUARE WEBSITE](#)

## Area Info

[GERMAN VILLAGE](#)

[NICHE.COM](#)

[NEIGHBORHOOD SCOUT](#)

## City Info

[FRANKLIN COUNTY](#)

[CITY OF COLUMBUS](#)

[COUNTY AUDITOR](#)

[COLUMBUS ZONING](#)

The development puts modern design and refined sensibility at the core of its distinctive offering to live well in the heart of the city.



# Strategic Partnership for Prime Retail Opportunities

Roth Real Estate Group delivers a comprehensive suite of commercial real estate services tailored to maximize value and achieve your business objectives. Our team leverages cutting-edge technology and data-driven insights to strategically invest in your vision and drive results. At Roth, we're committed to keeping our clients informed and empowered throughout the entire process.

As our partner, you'll have access to the latest market intelligence and emerging opportunities that align with your commercial property goals. Our expertise ensures you're always positioned to make informed decisions and capitalize on the dynamic commercial real estate landscape.

Contact us today to  
schedule a tour and  
learn more about  
leasing opportunities  
at Jaegar Square.



A **PIZZUTI** DEVELOPMENT

\*\*The information contained herein was furnished by sources believed to be reliable, but it is not guaranteed, warranted, or represented by Roth Real Estate Group. The presentation of this property is submitted and could be subject to error, omissions, change of price or condition prior to sales or lease, or withdrawn without notice.

# JAEGER SQUARE

**ROTH**

REAL  
ESTATE  
GROUP

**WILLIAM ROTH**

DD: 614.721.6751 | C: 614.284.2083  
WILL@ROTHREGROUP.COM

**SCOTT STEIDEL**

DD: 614.721.6751 | C: 614.404.1423  
SCOTT@ROTHREGROUP.COM

**JENNIFER ROONEY**

DD: 614.721.6751 | C: 614.721.6755  
JENNIFER@ROTHREGROUP.COM

