

FOR SALE

New Construction Turnkey Medical Office
Cypress Creek Executive Park 946-B Cypress Village Blvd., Sun City Center, FL 33573



OFFERING SUMMARY

| | |
|---|----------------------|
| Medical Office Condo Size | 3,500 SF 70' x 50' |
| Price for Turnkey Delivery | \$1,722,000 |
| Construction Completion Estimate | May 2025 |
| Parking Ratio | 5/1000 |
| Park CAM | \$2.50 / SF |
| Flood Zone | X – Lowest Risk |
| Existing park businesses: ASC, dermatology, Ob/Gyn, podiatry, rheumatology, mental health, pain relief, law, title & finance. | |

Kori Billings CCIM Broker Associate

Cell: 813.997.3341 | Kori@BridgewaterCommercial.com

447 3RD Ave. N, Suite 403, St. Petersburg, FL 33701

OVERVIEW

Offered **FOR SALE or Lease** is a new 3,500 SF turnkey medical office construction in Cypress Creek Executive Park, in the rapidly expanding southeast Hillsborough County market of Sun City Center. Construction has begun and building completion is estimated by May 2025.

The floor plan includes 6 exam rooms with sinks/cabinets, procedure room, 2 physician offices (one with private restroom), lab, waiting room with patient restroom, reception/business office, kitchen/breakroom, storage closets, IT room and staff restroom.

The site is 1.4 miles from I-75 and pulls residents of Ruskin, Riverview, Apollo Beach, and Wimauma. The park is 20 minutes south of Brandon, 23 minutes to Bradenton, 30 minutes to Lakewood Ranch and Tampa. Amazon's 1.1 million SF Ruskin distribution hub, with 2,500 employees, is directly across I-75 to the west. New residential developments are booming in the area, bringing the five-mile total population to nearly 132,173.

The information contained herein has been obtained from sources considered reliable. However, no warranty expressed or implied has been made as to the accuracy of the information provided, no liability assumed for errors or omissions. Bridgewater Commercial Real Estate is a full service commercial real estate brokerage.

**Bridgewater**
Commercial Real Estate



FOR SALE New Construction Turnkey Medical Office
946-B Cypress Village Blvd., Sun City Center, FL 33573

Cypress Creek Executive Park & Sun City Center

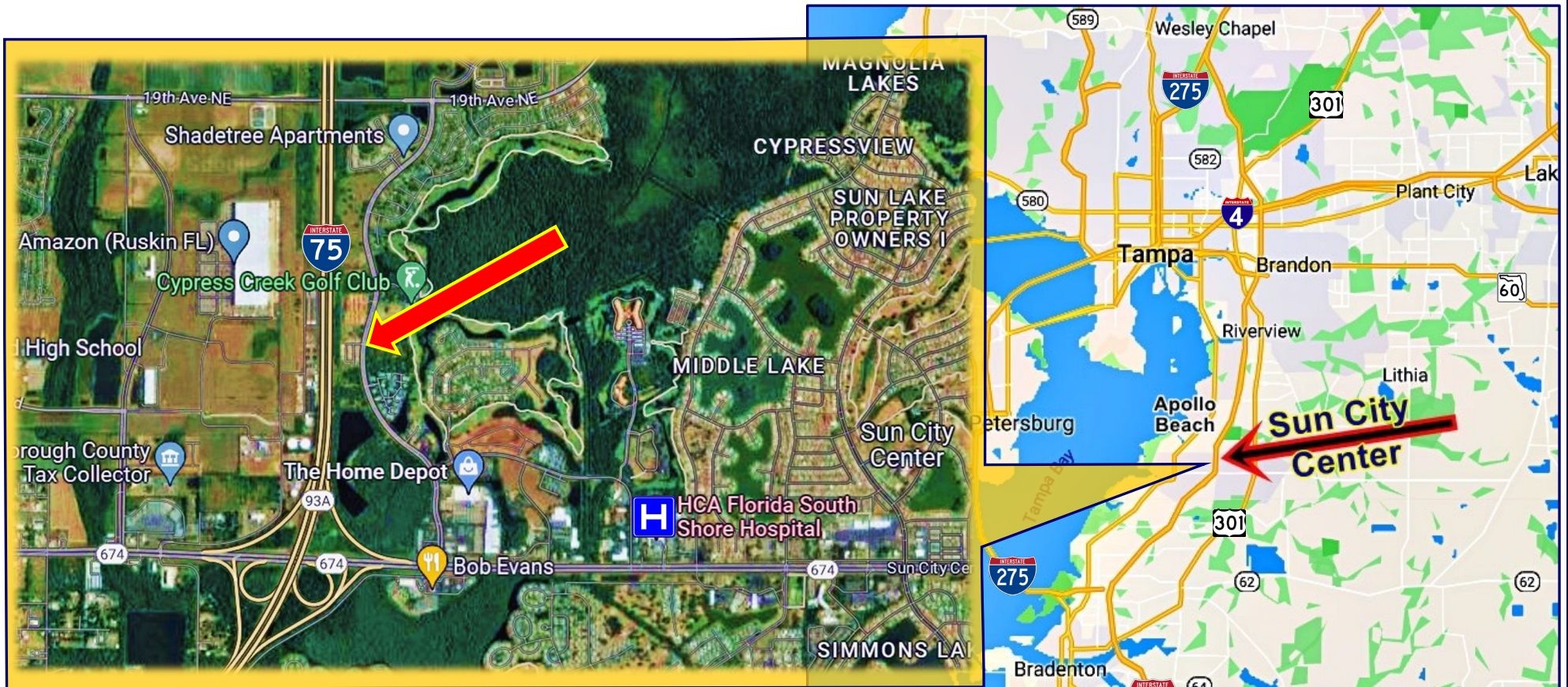
- 5-acre professionally managed office park
- 7 buildings with the 8th delivering in 2025
- 38,070 square feet of medical and professional offices
- Mediterranean style architecture and manicured landscaping
- One-mile population growth of 68.13% from 2020-2024
- Five-mile population growth of 4.15% from 2020-2024
- The SCS community boasts six golf courses and was voted 2024's #1 Retirement Community in America by Travel & Leisure Magazine



FOR SALE

New Construction Turnkey Medical Office

Cypress Creek Executive Park 946-B Cypress Village Blvd., Sun City Center, FL 33573



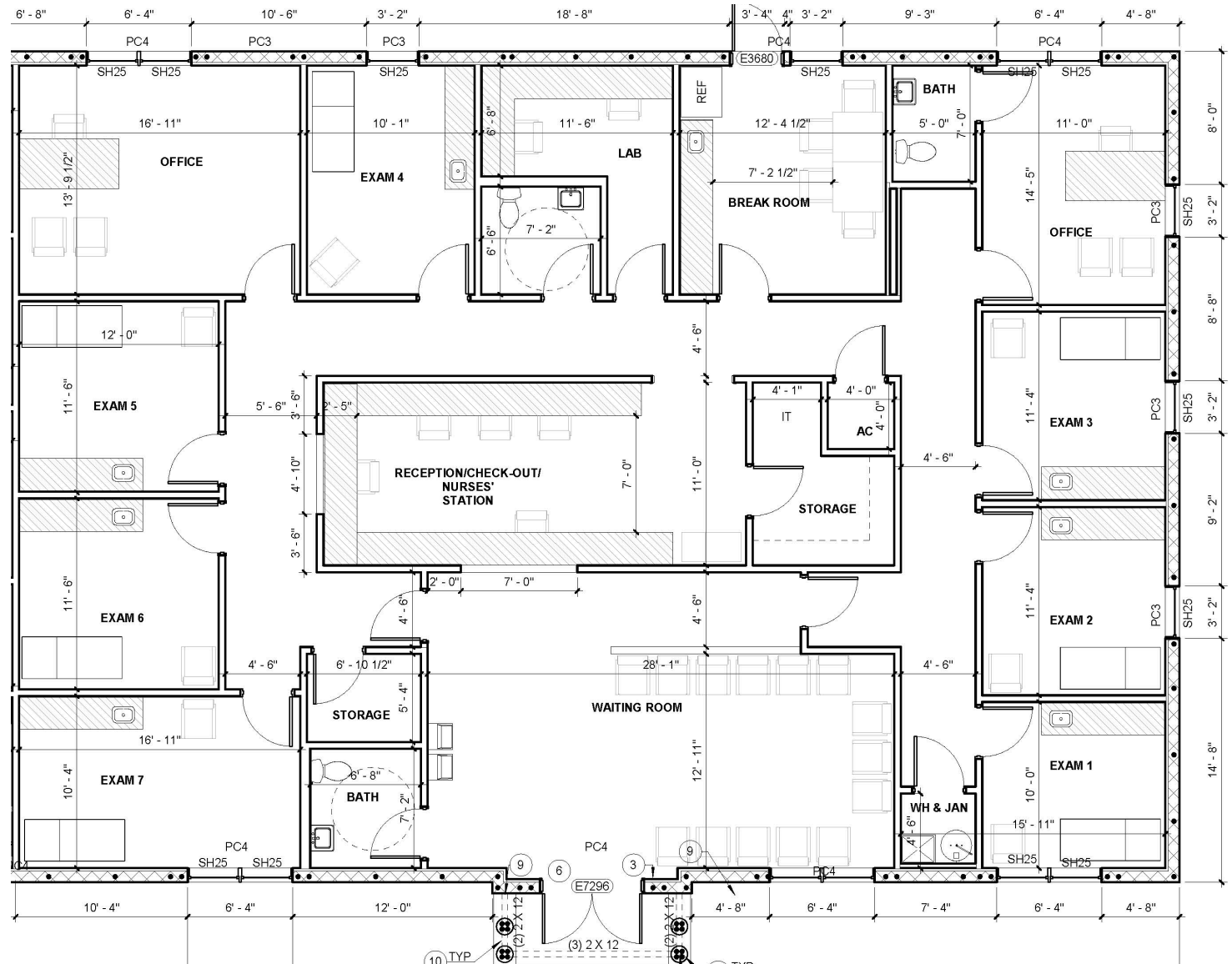
- 1.4 miles from I-75 Sun City Center Exit
- 1.7 miles to HCA Florida South Shore Hospital
- 7.8 miles to Saint Joseph's Hospital South
- 18 miles south of Brandon
- 23 miles northeast of Bradenton
- 26 miles south of Tampa
- 28 miles north of Lakewood Ranch

FOR SALE

New Construction Turnkey Medical Office
Cypress Creek Executive Park 946-B Cypress Village Blvd., Sun City Center, FL 33573

Floor Plan

- 6 Wet Exam Rooms
- 1 Procedure Room
- 2 Physician Offices
- Waiting Room
- Reception/Business Office
- Lab
- Kitchen/Break Room
- 2 Storage Closets
- IT Room
- 3 Restrooms
 - 1 Patient RR
 - 1 Staff RR
 - 1 Private RR



FOR SALE

New Construction Turnkey Medical Office

Cypress Creek Executive Park 946-B Cypress Village Blvd., Sun City Center, FL 33573

Floor Plan

- 6 Wet Exam Rooms
- 1 Procedure Room
- 2 Physician Offices
- Waiting Room
- Reception/Business Office
- Lab
- Kitchen/Break Room
- 2 Storage Closets
- IT Room
- 3 Restrooms
 - 1 Patient RR
 - 1 Staff RR
 - 1 Private RR



[Click here to take a 3D Virtual Tour of the office!](#)

FOR SALE

New Construction Turnkey Medical Office

Cypress Creek Executive Park 946-B Cypress Village Blvd., Sun City Center, FL 33573



FOR SALE
3,500 SF
Medical
Office

Cypress Village Blvd

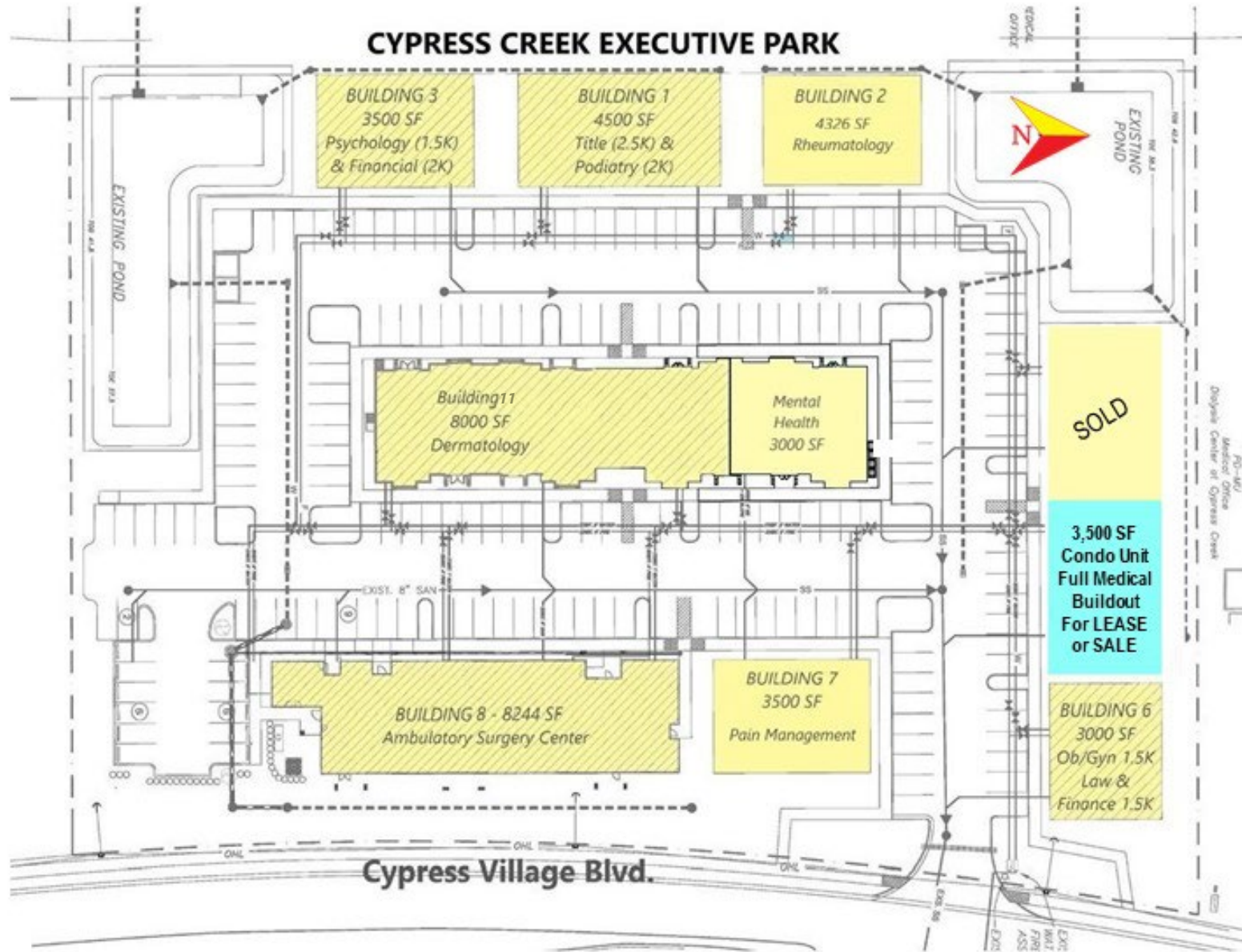


FOR SALE

New Construction Turnkey Medical Office

Cypress Creek Executive Park 946-B Cypress Village Blvd., Sun City Center, FL 33573

SITE PLAN



FOR SALE

New Construction Turnkey Medical Office
Cypress Creek Executive Park 946-B Cypress Village Blvd., Sun City Center, FL 33573



Site for 2 Condo Unit Medical Office Building New Construction – 3,500 SF Condo Unit Remaining For Sale



FOR SALE

New Construction Turnkey Medical Office
Cypress Creek Executive Park 946-B Cypress Village Blvd., Sun City Center, FL 33573



Existing Building in Park

The new construction medical office building will conform to the architecture of the existing buildings in Cypress Creek Executive Park.

Construction Completion Estimated May 2025

FOR SALE

New Construction Turnkey Medical Office
Cypress Creek Executive Park 946-B Cypress Village Blvd., Sun City Center, FL 33573



| 2024 Demos | 1 Mile | 3 Miles | 5 Miles |
|--------------------------|---------|---------|---------|
| Total Population | 3,841 | 55,061 | 132,173 |
| Daytime Population | 9,752 | 52,656 | 112,224 |
| Households | 1,298 | 23,307 | 50,614 |
| Housing Units | 1,544 | 26,226 | 56,303 |
| Average Household Income | 106,282 | 98,148 | 115,403 |
| Median Age | 72.7 | 52.9 | 43.9 |
| Average Home Value | 485,374 | 404,682 | 447,509 |

Demographic data from ESRI



Kori Billings CCIM
 Broker Associate
 C | 813.997.3341
Kori@BridgewaterCommercial.com

The information contained herein has been obtained from sources considered reliable. However, no warranty expressed or implied has been made as to the accuracy of the information provided, no liability assumed for errors or omissions. Bridgewater Commercial Real Estate is a full service commercial real estate brokerage.