



Former Dollar General
Space Available



Peach Orchard

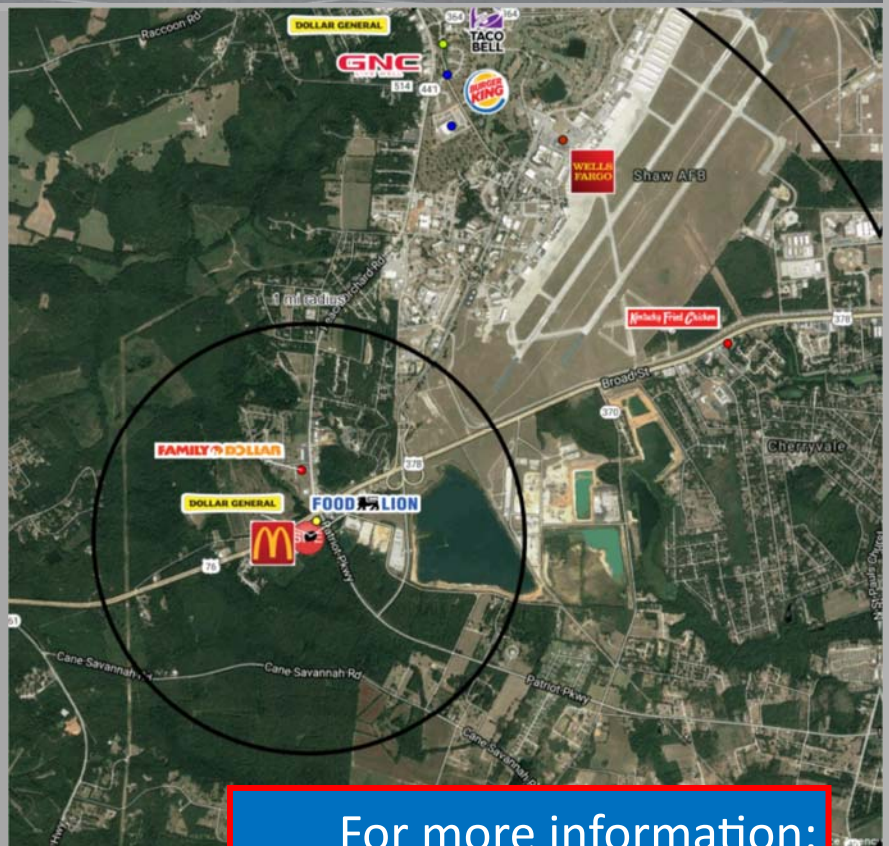
5700 Broad Street Extension, Sumter, SC

Property Features

- Located by Shaw Air Force Base
- Shopping Center holds a total of 54,000 GLA
- Ample Parking

Adjacent Tenants

- Food Lion
- Advance Auto Parts
- Subway
- Angela's Beauty Supply
- William & Taylor Tobacco
- L-T Nails
- The Salvation Army
- McDonald's



For more information:

Call (864)232-0019

Or visit reliance-advisors.com

Sumter, SC 29154

1 mi radius

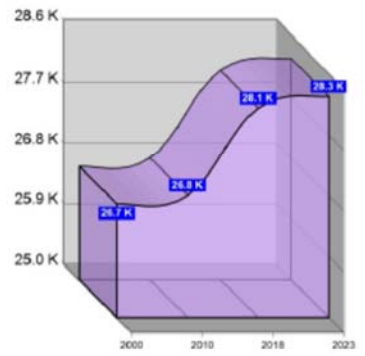
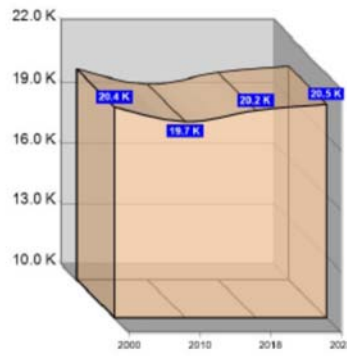
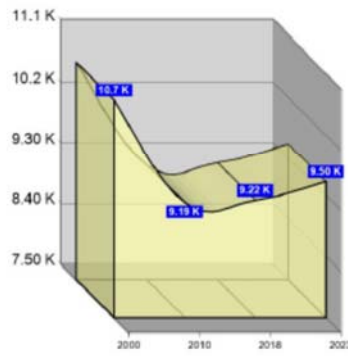
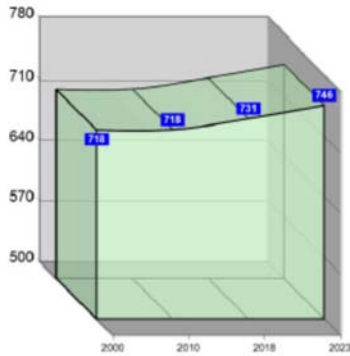
3 mi radius

5 mi radius

10 min drivetime

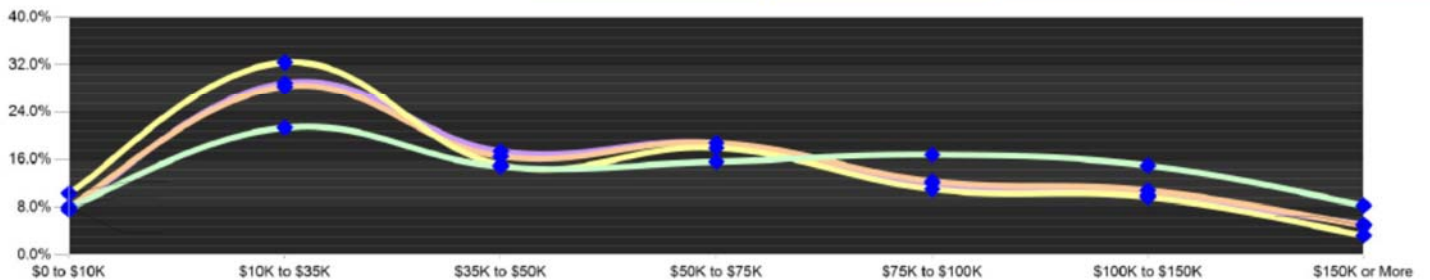
Population

Estimated Population (2018)	731	9,223	20,234	28,102
Projected Population (2023)	746	9,501	20,547	28,277
Census Population (2010)	718	9,190	19,671	26,798
Census Population (2000)	718	10,722	20,406	26,671
Projected Annual Growth (2018-2023)	15 0.4%	278 0.6%	312 0.3%	175 0.1%
Historical Annual Growth (2010-2018)	13 -	33 -2.1%	563 -0.5%	1,304 0.1%
Historical Annual Growth (2000-2010)	- -	-1,532 -1.4%	-735 -0.4%	128 -
Estimated Population Density (2018)	233 <i>psm</i>	326 <i>psm</i>	258 <i>psm</i>	305 <i>psm</i>
Trade Area Size	3.1 <i>sq mi</i>	28.3 <i>sq mi</i>	78.5 <i>sq mi</i>	92.2 <i>sq mi</i>

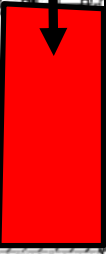


Household Income (2018)

Estimated Average Household Income	\$76,715	\$53,435	\$65,260	\$64,485
Estimated Median Household Income	\$56,471	\$41,589	\$47,802	\$47,709
HH Income Under \$10,000	24 8.0%	372 10.3%	647 8.1%	859 7.6%
HH Income \$10,000 to \$34,999	65 21.4%	1,167 32.5%	2,258 28.3%	3,273 29.0%
HH Income \$35,000 to \$49,999	45 14.8%	543 15.1%	1,316 16.5%	1,964 17.4%
HH Income \$50,000 to \$74,999	47 15.6%	645 18.0%	1,501 18.8%	2,126 18.8%
HH Income \$75,000 to \$99,999	45 15.0%	350 9.7%	862 10.8%	1,128 10.0%
HH Income \$100,000 to \$149,999	45 15.0%	350 9.7%	862 10.8%	1,128 10.0%
HH Income \$150,000 or More	25 8.4%	122 3.4%	397 5.0%	585 5.2%



Space Available +/- 8,000 SF



PARCEL NO. 2
(No Buildings)
0.55 ACRES
24,146 SQ. FT.
T.M.S. 131-00-02-038

PARCEL NO. 1
1.03 ACRES
45,079 SQ. FT.
T.M.S. 131-00-02-037

