



Crest
Commercial Realty

Two Buildings on 8.78 AC

Office Building + Flex Industrial Building
Former E-Check Facility

FOR SALE

AVAILABLE FOR LEASE



Flex/warehouse is 12,283 SF with 13 drive-in doors. Lease Rate: \$5/SF, tenant pays utilities and maintenance.

Sale Price: \$850,000



4800-4820 Wolf Rd., Dayton, OH 45416

4800 - 4810 Wolf Road

The building is situated on a large parcel with frontage on Wolf Rd. The building offers 3,762 SF with a mix of open, flexible space and private offices. Built in 1995, the building is well-maintained, provides ample parking, and easy access.



4800-4810 Wolf Road

An attractive vestibule offers entrance to both sides of the building. The left entrance offers a lobby, reception area and a mix of private offices and open conference area. The right entrance offers a large lobby, open, flexible space, and several additional mixed-use meeting rooms.



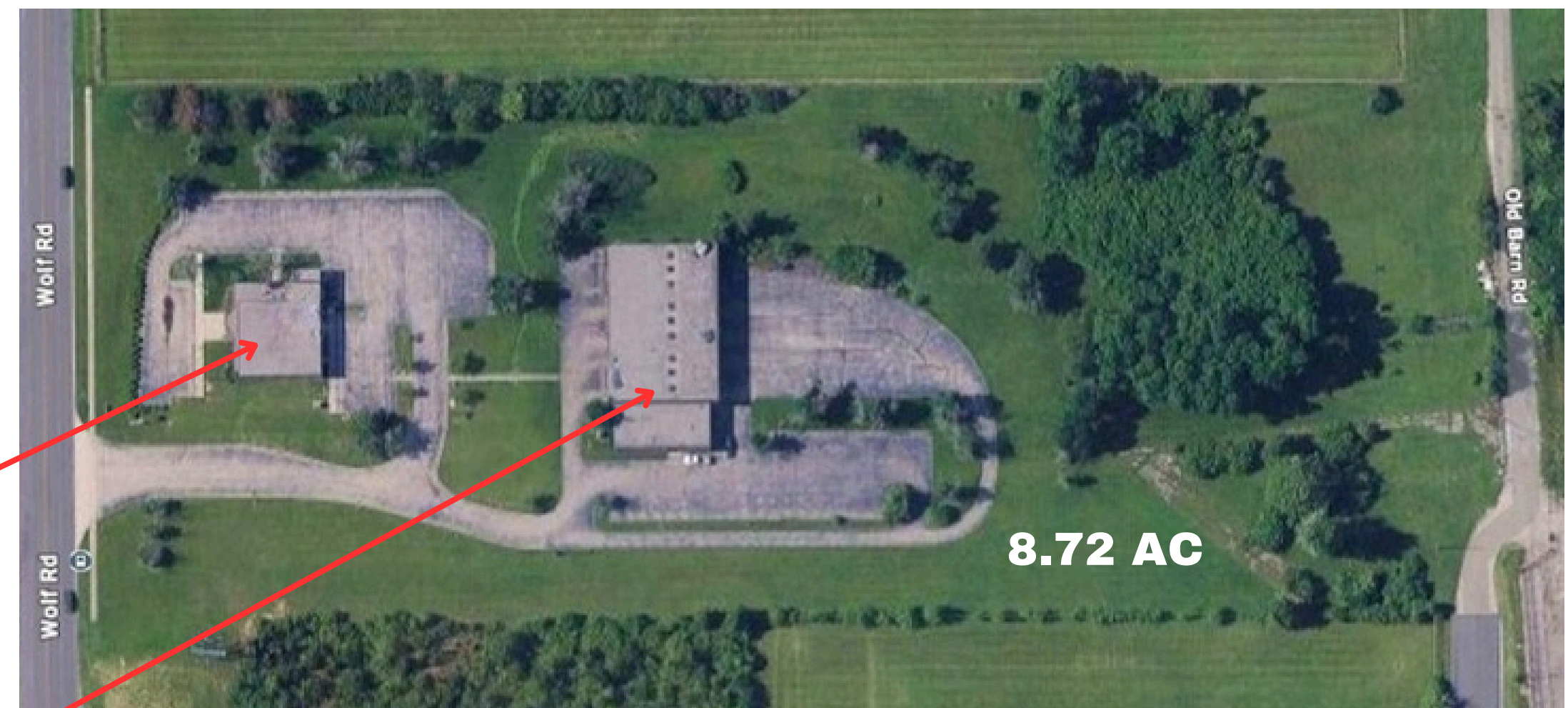
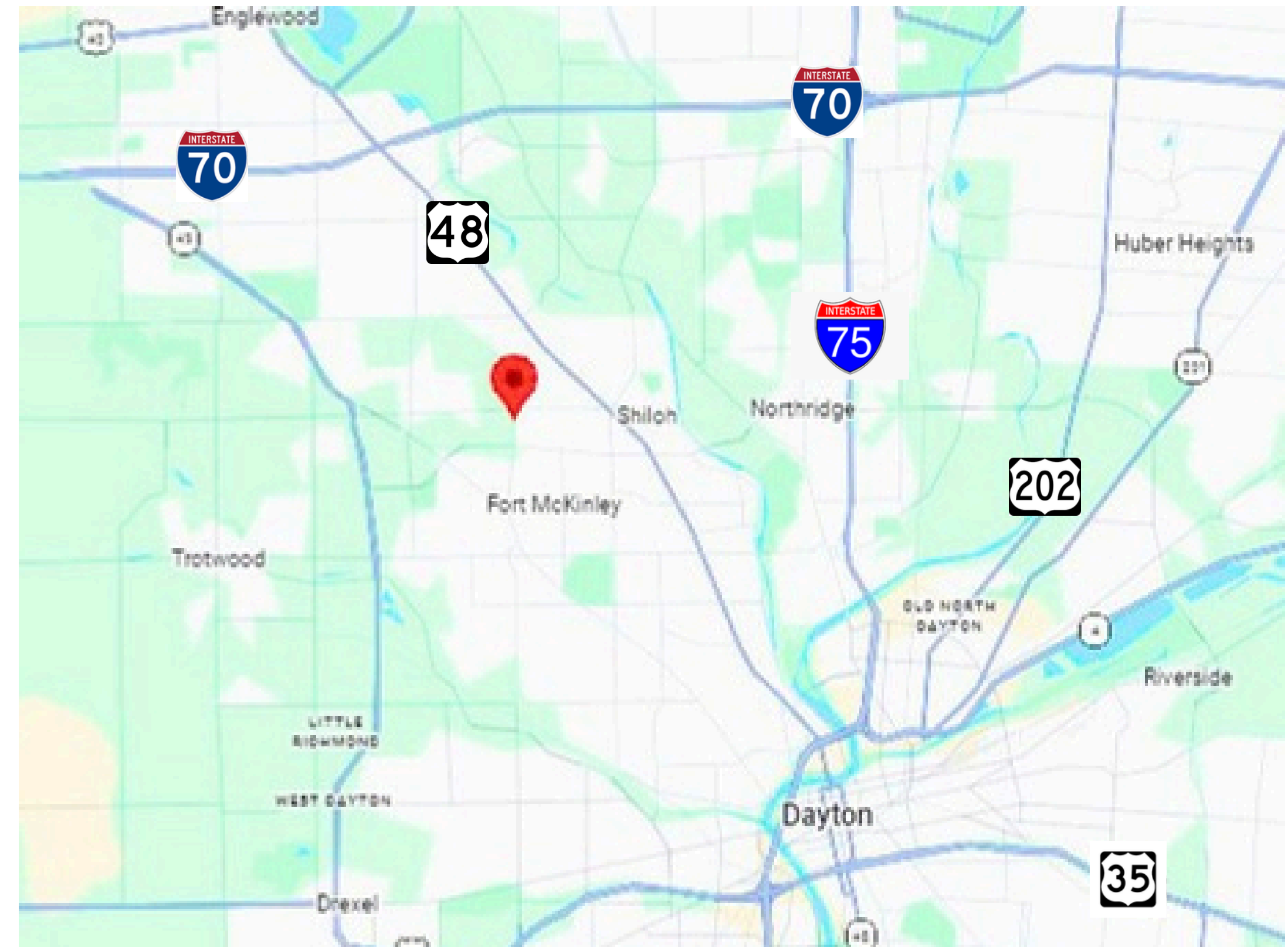
4820 Wolf Road

A former E-Check facility, the second building is situated at the rear of the property with direct access from Wolf Road. Built in 1991, the large industrial building offers 12,283 SF with 13 drive-in doors offering a flexible use. The building is well-illuminated, offers ample parking and easy access. **Also available FOR LEASE: \$5/SF, tenant pays utilities and maintenance.**



SITE PLAN

4800-4820 Wolf Road

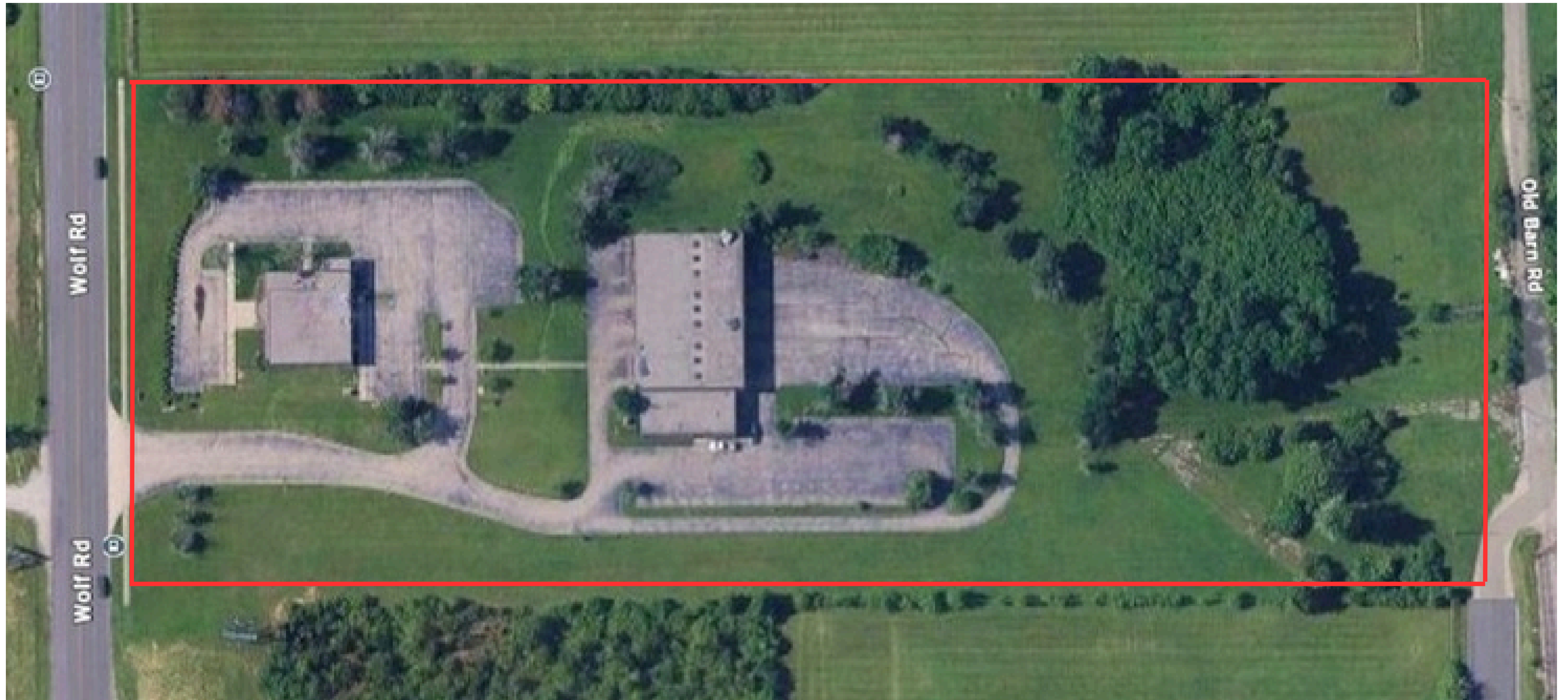


Parcel: E20 01007 0079

4800-4810 Wolf Road - Office - 3,762 SF

4820 Wolf Road - Flex/Industrial - 12,283 SF - Former E-Check

SITE PLAN

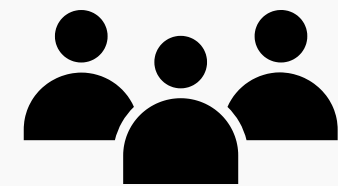


4820 Wolf Road - Flex/Industrial - 12,283 SF - Former E-Check

4800-4810 Wolf Road - Office - 3,762 SF

DEMOGRAPHICS

4800-4820 Wolf Road



Population

2024 Population
2029 Projection

2-mile	5-mile	10-mile
24,851	139,744	397,753
24,856	140,774	397,871



Households

2024 Households
2029 Household Projection

11,221	60,983	167,505
11,080	61,413	167,493



Housing & Income

2024 Medium Home Value
2024 Medium Household Income

\$121,428	\$109,474	\$138,787
\$43,605	\$42,671	\$52,741

Harrison Township is one of nine townships of Montgomery County. Most of Harrison Township has been incorporated into the City of Dayton. As of the most recent census, the population of Harrison Township was over 21,000. Offering a unique blend of urban, rural, and metropolitan areas. The township offers proximity to Wright Patterson Air Force Base and is just 8 miles from the James M Cox Dayton International Airport. Larger metropolitan areas in Columbus and Cincinnati are just 60-75 miles in either direction.



Crest
Commercial Realty

Nick Miller-Jacobson

937-222-1600, ext 105

nick@crestrealtyohio.com | 937-631-6261

