

59 General Warren Blvd
Malvern, PA

For Lease



Jessi Ayoub, CCIM

484.459.0557

jayoub@liebermanearley.com

Phil Earley, CCIM

610.225.0900

Philearley@liebermanearley.com

www.liebermanearley.com | 610-688-4300

The Meadows - 485 Devon Park Drive, Suite 110, Wayne, PA 19087

LIEBERMAN EARLEY & COMPANY

BUILDING DESCRIPTION:

Located in Chester County, this building located in the Commons in Great Valley is less than a mile from PA Route 29 and the Pennsylvania Turnpike. With newly developed office and retail spaces nearby, this +/- 4,000 SF space is ideal for many different types of office uses.

SITE BENEFITS:

- Zoned NC-2 (Neighborhood Commercial)
- On-site property management
- Spacious offices
- In-suite restrooms
- Built in 1997
- Ample parking
- Kitchenette
- Reception area
- Monument signage

AVAILABILITY: +/-4,000 SF

RATE: \$21/SF + Electric



Jessi Ayoub, CCIM

484.459.0557

jayoub@liebermanearley.com

Phil Earley, CCIM

610.225.0900

Philearley@liebermanearley.com

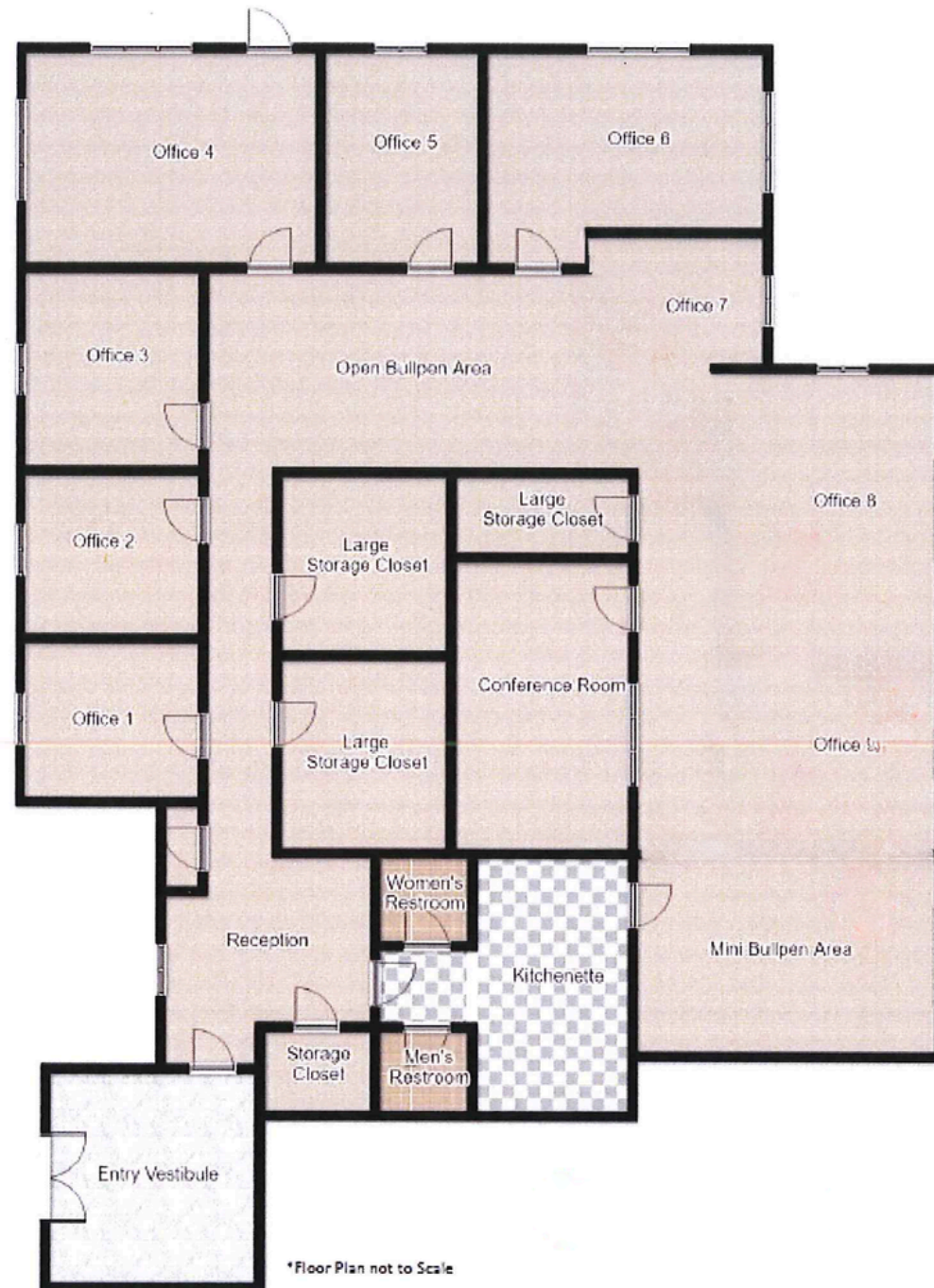
LOCATION HIGHLIGHTS

59 General Warren Blvd. | Malvern, PA



- ▶ Next to Route 29 and PA Turnpike.
- ▶ Minutes to Routes 30 and 202.
- ▶ Restaurants, banks, hotels, and shopping nearby.

FLOOR PLANS



INTERIOR PHOTOS



59 General Warren Blvd
Malvern, PA

For Lease



Jessi Ayoub, CCIM

484.459.0557

jayoub@liebermanearley.com

Phil Earley, CCIM

610.225.0900

Philearley@liebermanearley.com

www.liebermanearley.com | 610-688-4300

The Meadows - 485 Devon Park Drive, Suite 110, Wayne, PA 19087

LIEBERMAN EARLEY & COMPANY