



COLDWELL BANKER
PREFERRED,
REALTORS®

FOR LEASE AT 'THE SHOPS AT BRIMHALL' 11006 & 11108 BRIMHALL RD

Bakersfield, CA 93312



AT THE NORTHEAST CORNER OF BRIMHALL RD AND JEWETTA AVE

PROPERTY INFORMATION

PAD 1

11108 Brimhall Road

Lot Size 38,768 Sq. Ft.

Total built up space of
8,820 sq. ft. Approx

Suite size minimum divisible
from 1,083 sq. ft. to 8,820 sq. ft.

PROPERTY INFORMATION

PAD 2 **LEASED**

11006 Brimhall Road

Lot Size 37,897 Sq. Ft.

Total built up space of 7,000
sq. ft. Approx

Suite size minimum divisible
from 1,254 sq. ft. to 7,000 sq. ft.

Vikram Reddy

Coldwell Banker Preferred, Realtors

DRE #01845883 | Co.DRE# 01100927

661 836 2345 office | 661 900 1596 cell

vreddy1@yahoo.com



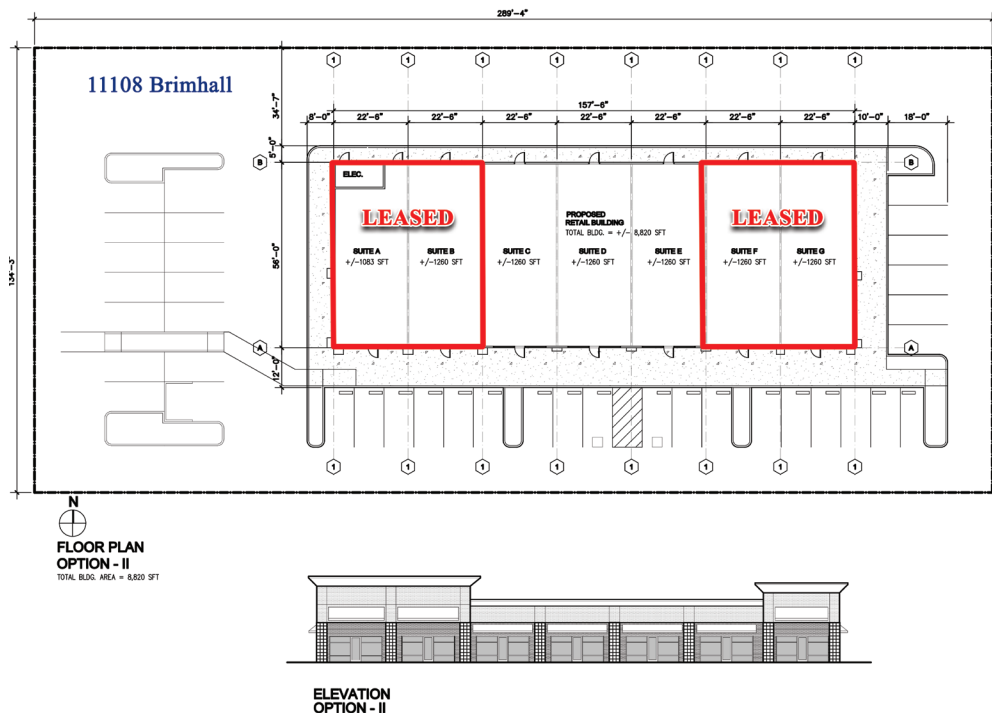
COLDWELL BANKER
PREFERRED,
REALTORS®

FOR LEASE AT 'THE SHOPS AT BRIMHALL' 11006 & 11108 BRIMHALL RD

Bakersfield, CA 93312



- * Located in The Shops at Brimhall with fast growing residential area
- * Excellent location with nearby schools and parks
- * Tenants include: Jack In The Box, Grocery Outlet, Mountain Mikes's Pizza, SnoShack and Supercuts



| Demographics | 1 Mile | 2 Miles | 3 Miles |
|------------------|----------|----------|----------|
| Population: | 10,669 | 83,082 | 195,839 |
| Households: | 3,587 | 28,845 | 67,890 |
| Median HH Income | \$85,808 | \$85,900 | \$74,466 |

*info provided by Experian through Alteryx 2016/2017

